

IDEM Non-Contact Safety Accessories

Non-Contact Spacers

- 5 different spacers available
- Supplied in packages of 2
- All spacers are made from polyester
- For use with IDEM Non-Contact switches when mounted to a ferrous surface

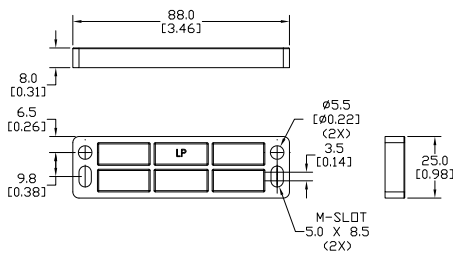
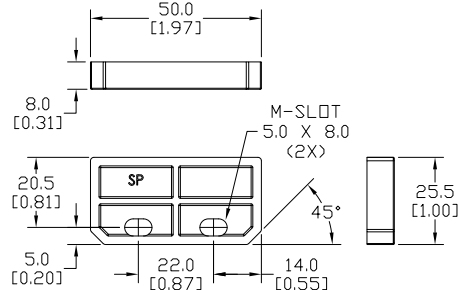
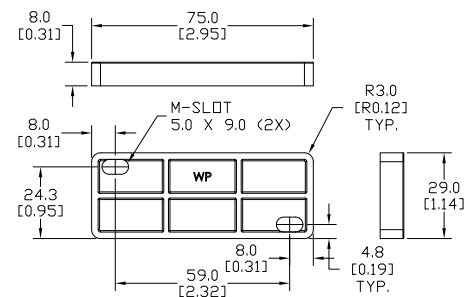
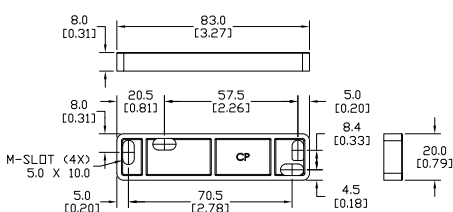
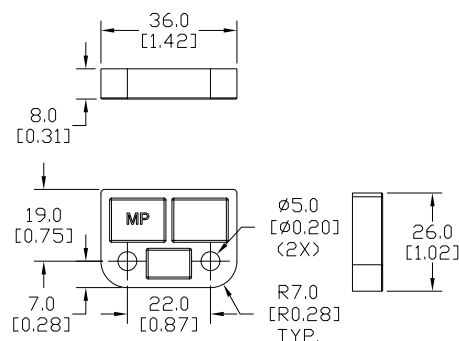
**110300-2****111300-2****112300-2****113300-2****114300-2**

IDEM Non-Contact Safety Switch Spacers

Part Number	Price	Description	Use with non-contact switch actuator:					Weight	Dimensions
			LP	SP	WP	CP	MP		
110300-2	\$15.50	LP polyester 8mm [0.31 in] spacer for use on ferrous materials	p					0.03 lb [13.6 g]	Refer to drawings below
111300-2	\$12.50	SP polyester 8mm [0.31 in] spacer for use on ferrous materials		p				0.03 lb [13.6 g]	
112300-2	\$15.50	WP polyester 8mm [0.31 in] spacer for use on ferrous materials			p			0.06 lb [27.2 g]	
113300-2	\$15.50	CP polyester 8mm [0.31 in] spacer for use on ferrous materials				p		0.07 lb [31.8 g]	
114300-2	\$12.50	MP polyester 8mm [0.31 in] spacer for use on ferrous materials					p	0.07 lb [31.8 g]	

Dimensions

mm [in]

110300-2**111300-2****112300-2****113300-2****114300-2**See our website www.AutomationDirect.com for complete engineering drawings.

Safety Products



Warning: Safety products sold by AutomationDirect are Safety components only. The purchaser/installer is solely responsible for the application of these components and ensuring all necessary steps have been taken to assure each application and use meets all performance and applicable safety requirements and/or local, national and/or international safety codes as required by the application. AutomationDirect cannot certify that our products, used solely or in conjunction with other AutomationDirect or other vendors' products, will assure safety for any application. Any person using or applying any products sold by AutomationDirect is responsible for learning the safety requirements for their individual application and applying them, and therefore assumes all risks, and accepts full and complete responsibility, for the selection and suitability of the product for their respective application.

AutomationDirect does not provide design or consulting services, and cannot advise whether any specific application or use of our products would ensure compliance with the safety requirements for any application.