


# IDEM KP/K-SS and K-15 Interlock Safety Switches

## KP/K-SS and K-15 Series Housing

- Tongue (key) interlock operated
  - 180 degree adjustable head
  - 4 actuator entry positions
  - Three 1/2 in. NPT female conduit openings
  - Force guided NC contacts 
  - 40 mm mounting profile
  - Purchase actuating key separately. (See accessories.)
- See *electrical specifications later in this section.*

**KP-200002**



**KP-200002-SS**



**K-SS-208002**



IDEM KP/K-SS Interlock Safety Switches							
Part Number	Price	Body Material	Head Material	Weight (lbs)	Actuator Travel/Force for Positive Opening	Contact Configuration	Dimensions
<a href="#"><u>KP-200002</u></a>	\$51.00	Plastic	Plastic	0.7	6mm/12N	1 N.O., 2 N.C. Slow action	Figure 1
<a href="#"><u>KP-200008</u></a>	\$66.00					1 N.O., 3 N.C. Slow action	Figure 1
<a href="#"><u>KP-200011</u></a>	\$66.00					2 N.O., 2 N.C. Slow action	Figure 1
<a href="#"><u>KP-200002-SS</u></a>	\$73.00					316 stainless steel	0.85
<a href="#"><u>KP-200011-SS</u></a>	\$88.00	Plastic	316 stainless steel	0.85	6mm/12N	2 N.O., 2 N.C. Slow action	Figure 2
<a href="#"><u>K-SS-208002</u></a>	\$162.00	316 stainless steel	1.63	1 N.O., 2 N.C. Slow action		Figure 3	
<a href="#"><u>K-SS-208011</u></a>	\$175.00	316 stainless steel	316 stainless steel	1.63	6mm/12N	2 N.O., 2 N.C. Slow action	Figure 3

**K-15-207002**



**K-15-207002-SS**



IDEM K-15 Interlock Safety Switches							
Part Number	Price	Body Material	Head Material	Weight (lbs)	Actuator Travel / Force for Positive Opening	Contact Configuration	Dimensions
<a href="#"><u>K-15-207002</u></a>	\$50.00	Plastic	Plastic	0.66	6mm/12N	1 N.O., 2 N.C. Slow action	Figure 4
<a href="#"><u>K-15-207005</u></a>	\$50.00					3 N.C. Slow action	Figure 4
<a href="#"><u>K-15-207002-SS</u></a>	\$73.00					316 Stainless Steel	0.8

# IDEM KP/K-SS and K-15 Interlock Safety Switches

## Dimensions

mm [in]

Figure 1

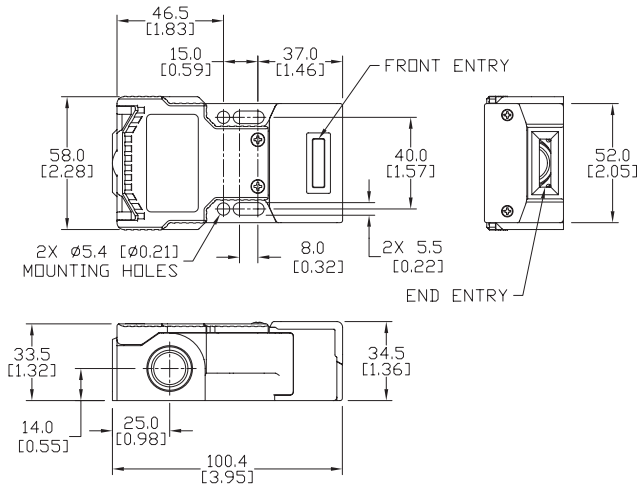


Figure 2

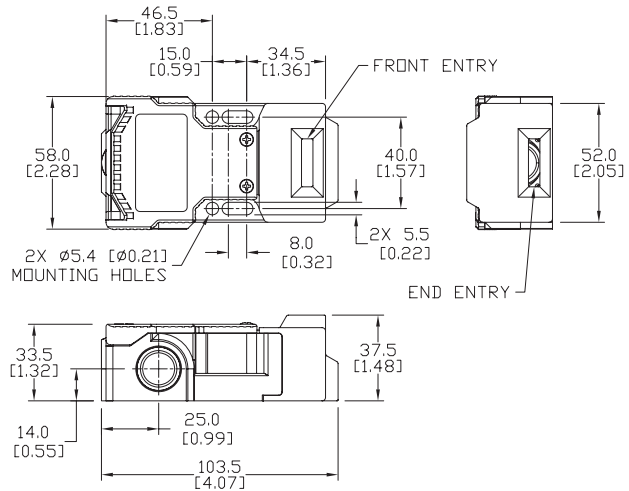


Figure 3

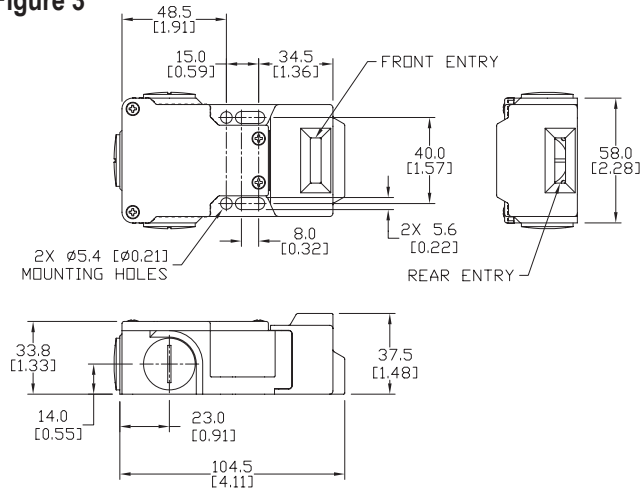


Figure 4

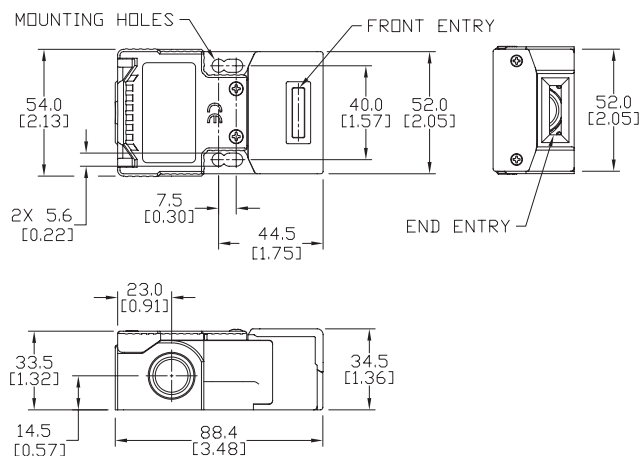
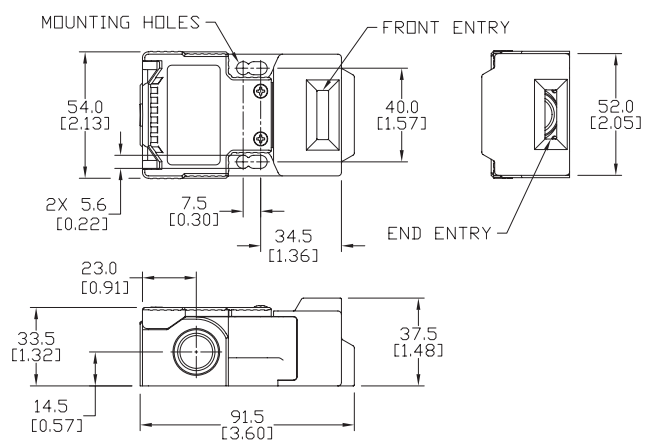


Figure 5

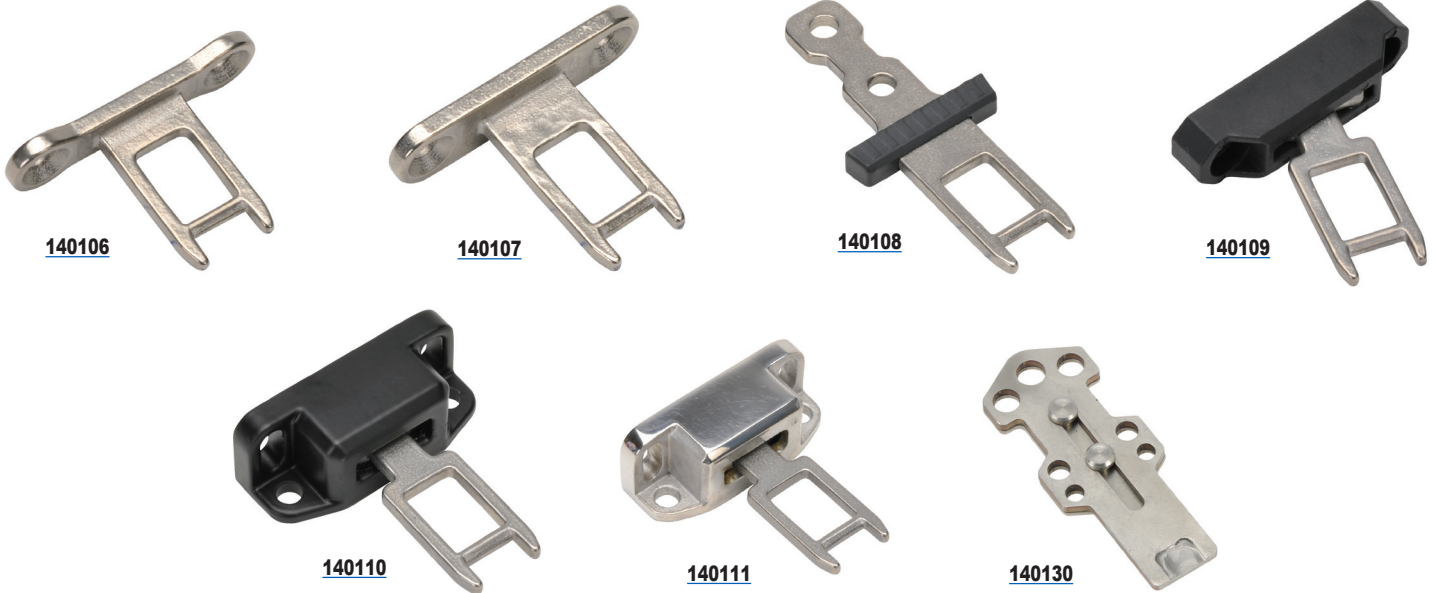


# IDEM Interlock Safety Accessories

## Actuator Keys For Use With KP/K15 and K-SS/KM/KM-SS



- All keys are 316 stainless steel
- Flexible key options available



IDEM Interlock Safety Switch Actuator Tongue (Keys)							
Part Number	Price	Description	Use With		Minimum Entry Radius (mm [in])	Weight (lb [g])	Drawings
			KP/K-15	K-SS/KM/ KM-SS			
<a href="#">140106</a>	\$10.50	40mm mounting hole spacing, 90° stainless steel key/mounting tab	✓*		175mm [6.89]	0.07 [31.8]	<a href="#">PDF</a>
<a href="#">140107</a>	\$11.00	40mm mounting hole spacing, 90° stainless steel key/mounting tab	✓**	✓	175mm [6.89]	0.07 [31.8]	<a href="#">PDF</a>
<a href="#">140108</a>	\$10.50	20mm mounting hole spacing, straight stainless steel key with plastic stop	✓	✓	175mm [6.89]	0.07 [31.8]	<a href="#">PDF</a>
<a href="#">140109</a>	\$19.50	40mm mounting hole spacing, stainless steel key with polyester flexible mounting tab	✓	✓	100mm [3.94]	0.10 [45.4]	<a href="#">PDF</a>
<a href="#">140110</a>	\$38.50	40mm mounting hole spacing, stainless steel key with black painted aluminum flexible mounting tab	✓	✓	100mm [3.94]	0.16 [72.6]	<a href="#">PDF</a>
<a href="#">140111</a>	\$78.00	40mm mounting hole spacing, stainless steel key with mirror polished stainless steel flexible mounting tab	✓	✓	100mm [3.94]	0.22 [99.8]	<a href="#">PDF</a>
<a href="#">140130</a>	\$54.00	IDEM lockout actuator, stainless steel, for use with IDEM tongue (key) switches	✓	✓	NA	0.10 [45.4]	<a href="#">PDF</a>

\* For KP and K-15 series with plastic heads

\*\* For KP and K-15 series with stainless steel heads

# IDEM Interlock Safety Switches Specifications



Specifications							
	IDIS	INCH/MK1	HC	KM	KP/K-SS	K-15	GLx
<b>Safety Classification and Reliability Data</b>							
<b>Switching Reliability (B10<sub>d</sub>)</b>	2.5 x 10 <sup>6</sup> operations at 100mA load						1.5 x 10 <sup>6</sup> operations at 100mA load
<b>ISO 13849-1</b>	Up to PLe depending upon system architecture						
<b>EN 62061</b>	Up to SIL3 depending upon system architecture						
<b>Safety Data - Annual Usage</b>	8 cycles per hour / 24 hours per day / 365 days						
<b>Agency Approvals</b>	cULus (E258676), CE						cULus (E258676), CE, TUV
<b>Electrical and General Specifications</b>							
<b>Conductor Sizes</b>	16-12 AWG (1.5 to 2.5 mm <sup>2</sup> )						
<b>Utilization Category</b>	AC15, A300, 3A						
<b>Thermal Current</b>	10A						
<b>Short Circuit Overload Protection</b>	External 10A Fast Acting recommended						
<b>Rated Insulation Voltage</b>	600VAC			500VAC			
<b>Contact Terminals</b>	Stainless steel (Snap action plated brass); Max conductor 1.5 m <sup>2</sup> (IDIS), 2.5 m <sup>2</sup> (KM, K/K-15); 1 N•m [0.74 lb•ft] torque						
<b>Maximum Switching Current</b>	2.5A @24 VDC 6A @ 120VAC, 3A @ 240VDC (720VA Break)						
<b>Maximum Approach/Withdrawal Speed</b>	600mm/s [23.6 in/s]						NA
<b>Enclosure Protection</b>	IP67 (IP69K on all models with both stainless steel head and body)						
<b>Operating Temperature</b>	-25°C to 80°C [-13°F to 176°F]						
<b>Vibration</b>	IEC 68-2-6, 10Hz to 55Hz + 1Hz						10Hz to 500Hz 0.35 mm [0.014 in]
<b>Lid Screws/Torque</b>	Plated brass 1 N•m [0.74 lb•ft]	Stainless steel T20 Torx 1 N•m [0.74 lb•ft]	Stainless steel 1 N•m [0.74 lb•ft]				Stainless steel T20 Torx 1.5 N•m [1.11 lb•ft]
<b>Recommended Mounting Screws/Torque</b>	M4 1.5 N•m [1.11 lb•ft]	M5 4N•m [2.95 lb•ft]	M4 1.5 N•m [1.11 lb•ft]		M5 4N•m [2.95 lb•ft]		
<b>Head Screws/Torque</b>	Stainless steel, except snap (plated brass) 1 N•m [0.74 lb•ft]	Stainless steel T20 Torx 1 N•m [0.74 lb•ft]	Stainless steel; 1 N•m [0.74 lb•ft]				

# Safety Products



*Warning: Safety products sold by AutomationDirect are Safety components only. The purchaser/installer is solely responsible for the application of these components and ensuring all necessary steps have been taken to assure each application and use meets all performance and applicable safety requirements and/or local, national and/or international safety codes as required by the application. AutomationDirect cannot certify that our products, used solely or in conjunction with other AutomationDirect or other vendors' products, will assure safety for any application. Any person using or applying any products sold by AutomationDirect is responsible for learning the safety requirements for their individual application and applying them, and therefore assumes all risks, and accepts full and complete responsibility, for the selection and suitability of the product for their respective application.*

*AutomationDirect does not provide design or consulting services, and cannot advise whether any specific application or use of our products would ensure compliance with the safety requirements for any application.*