


IDEM KM/KM-SS Interlock Safety Switches

KM/KM-SS Series Housing

- Tongue (key) interlock operated
- 90 degree adjustable head
- 8 actuator entry positions
- One 1/2 in. NPT female conduit opening
- Force guided NC contacts 
- 30 mm mounting profile
- Aluminum and 316 stainless steel options available
- Includes one tamper-proof T20 Torx bit
- Purchase actuating key separately. (See accessories)

See electrical specifications later in this section.



| IDEM KM /KM-SS Interlock Safety Switches | | | | | | | |
|--|----------|---------------------|---------------------|--------------|--|----------------------------|------------|
| Part Number | Price | Body Material | Head Material | Weight (lbs) | Actuator Travel / Force for Positive Opening | Contact Configuration | Dimensions |
| KM-203002 | \$82.00 | Die-cast aluminum | Die-cast aluminum | 0.92 | 6mm/12N | 1 N.O., 2 N.C. Slow action | Figure 1 |
| KM-203008 | \$98.00 | Die-cast aluminum | Die-cast aluminum | 0.92 | 6mm/12N | 1 N.O., 3 N.C. Slow action | Figure 1 |
| KM-203011 | \$98.00 | Die-cast aluminum | Die-cast aluminum | 0.92 | 6mm/12N | 2 N.O., 2 N.C. Slow action | Figure 1 |
| KM-203002-SS | \$105.00 | Die-cast aluminum | 316 stainless steel | 1.1 | 6mm/12N | 1 N.O., 2 N.C. Slow action | Figure 2 |
| KM-203011-SS | \$121.00 | Die-cast aluminum | 316 stainless steel | 1.1 | 6mm/12N | 2 N.O., 2 N.C. Slow action | Figure 2 |
| KM-SS-204002 | \$166.00 | 316 stainless steel | 316 stainless steel | 1.4 | 6mm/12N | 1 N.O., 2 N.C. Slow action | Figure 2 |
| KM-SS-204011 | \$179.00 | 316 stainless steel | 316 stainless steel | 1.4 | 6mm/12N | 2 N.O., 2 N.C. Slow action | Figure 2 |

Dimensions

mm [in]

Figure 1

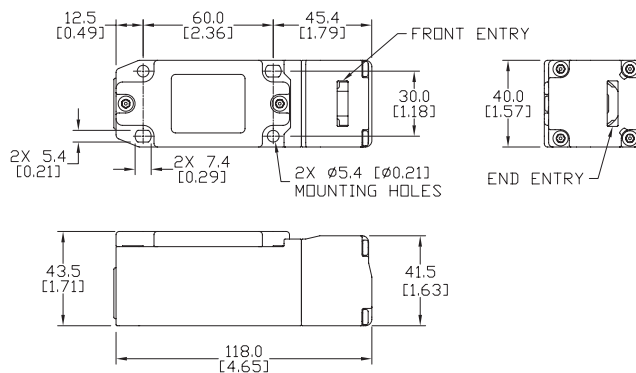
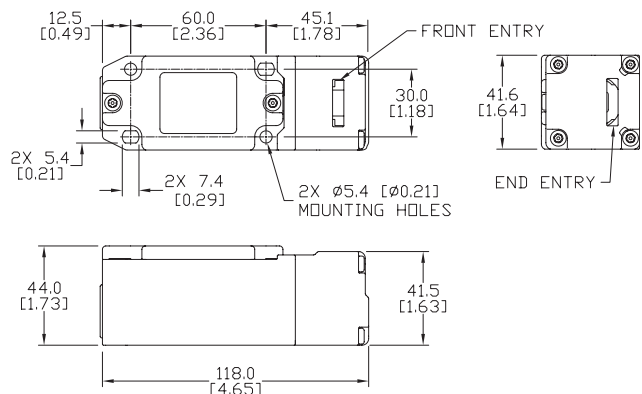


Figure 2

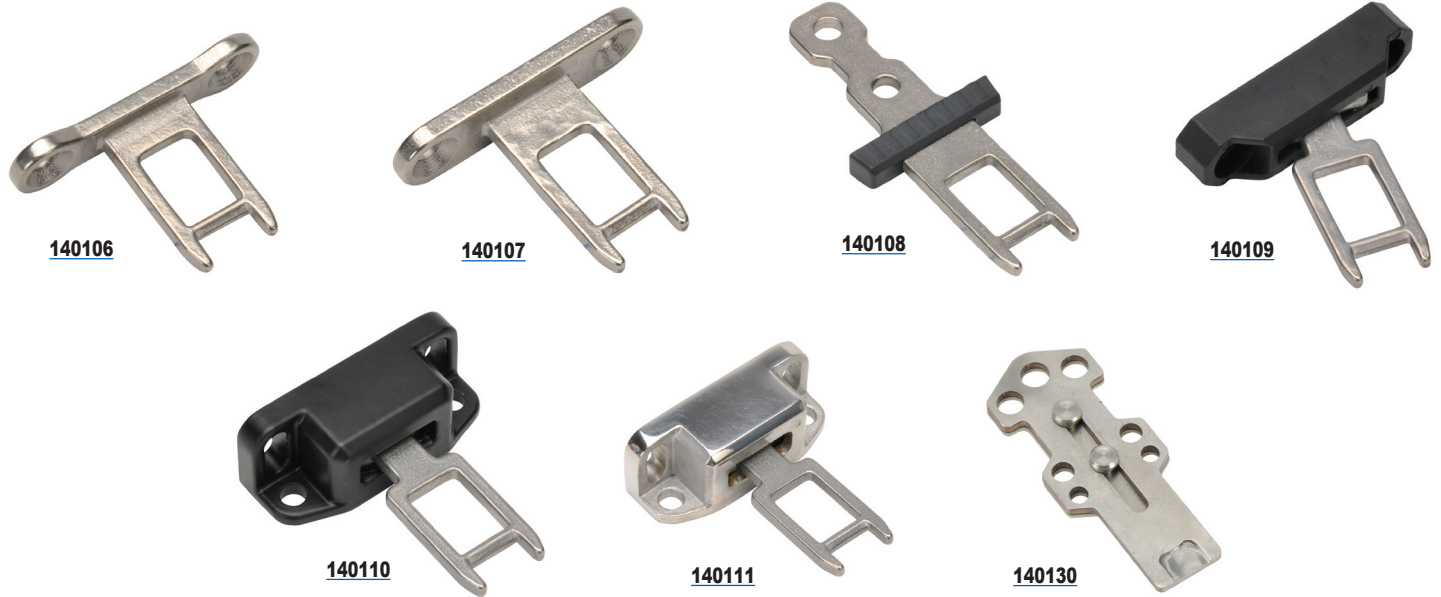


IDEM Interlock Safety Accessories



Actuator Keys For Use With KP/K15 and K-SS/KM/KM-SS

- All keys are 316 stainless steel
- Flexible key options available



| IDEM Interlock Safety Switch Actuator Tongue (Keys) | | | | | | | |
|---|---------|--|----------|---------------|--------------------------------|-----------------|---------------------|
| Part Number | Price | Description | Use With | | Minimum Entry Radius (mm [in]) | Weight (lb [g]) | Drawings |
| | | | KP/K-15 | K-SS/KM/KM-SS | | | |
| 140106 | \$10.50 | 40mm mounting hole spacing, 90° stainless steel key/mounting tab | ✓* | | 175mm [6.89] | 0.07 [31.8] | PDF |
| 140107 | \$11.00 | 40mm mounting hole spacing, 90° stainless steel key/mounting tab | ✓** | ✓ | 175mm [6.89] | 0.07 [31.8] | PDF |
| 140108 | \$10.50 | 20mm mounting hole spacing, straight stainless steel key with plastic stop | ✓ | ✓ | 175mm [6.89] | 0.07 [31.8] | PDF |
| 140109 | \$19.50 | 40mm mounting hole spacing, stainless steel key with polyester flexible mounting tab | ✓ | ✓ | 100mm [3.94] | 0.10 [45.4] | PDF |
| 140110 | \$38.50 | 40mm mounting hole spacing, stainless steel key with black painted aluminum flexible mounting tab | ✓ | ✓ | 100mm [3.94] | 0.16 [72.6] | PDF |
| 140111 | \$78.00 | 40mm mounting hole spacing, stainless steel key with mirror polished stainless steel flexible mounting tab | ✓ | ✓ | 100mm [3.94] | 0.22 [99.8] | PDF |
| 140130 | \$54.00 | IDEM lockout actuator, stainless steel, for use with IDEM tongue (key) switches | ✓ | ✓ | NA | 0.10 [45.4] | PDF |

* For KP and K-15 series with plastic heads

** For KP and K-15 series with stainless steel heads

IDEM Interlock Safety Accessories



Accessories

- Gate bolt kits provide a sliding latch and lockout for swinging or sliding doors
- Comes with handle and flat actuator
- Sliding action prevents accidental closure
- Requires four M5 x 45mm mounting hardware (not included)
- Gate bolt kit materials: ABS plastic handle; mild steel yellow plate; aluminum black base; mild steel plated bar (inserts into guide); stainless steel guide and key



GBA-1-210003



GBA-1-210004



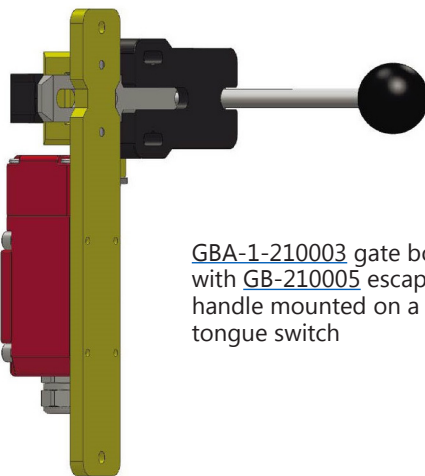
GB-210005



GB-210006

| IDEM Interlock Safety Switch Accessories | | | | | | |
|--|----------|--|-----------|-------|-----------------|---------------------|
| Part Number | Price | Description | Use with: | | Weight (lb [g]) | Drawings |
| | | | KM | GBA-1 | | |
| GBA-1-210003 | \$137.00 | IDEM gate bolt, left hand version, for use with KM series safety switches. Includes actuating tongue (key). | ✓ | | 3.7 [1678] | PDF |
| GBA-1-210004 | \$137.00 | IDEM gate bolt, right hand version, for use with KM series safety switches. Includes actuating tongue (key). | ✓ | | 3.7 [1678] | PDF |
| GB-210005 | \$19.50 | IDEM rear escape handle, for use with GBA-1 and GBL-1 series gate bolts | | ✓ | 0.1 [45] | PDF |
| GB-210006 | \$19.50 | IDEM spring loaded catch, for use with GBA-1 and GBL-1 series gate bolts | | ✓ | 0.08 [36] | PDF |

Assembly Example



[GBA-1-210003](#) gate bolt with [GB-210005](#) escape handle mounted on a KM tongue switch

IDEM Interlock Safety Switches Specifications



| Specifications | | | | | | | |
|---|---|---|---------------------------------------|--------|-------------------------|------|---|
| | IDIS | INCH/MK1 | HC | KM | KP/K-SS | K-15 | GLx |
| Safety Classification and Reliability Data | | | | | | | |
| Switching Reliability (B10_d) | 2.5 x 10 ⁶ operations at 100mA load | | | | | | 1.5 x 10 ⁶ operations at 100mA load |
| ISO 13849-1 | Up to PLe depending upon system architecture | | | | | | |
| EN 62061 | Up to SIL3 depending upon system architecture | | | | | | |
| Safety Data - Annual Usage | 8 cycles per hour / 24 hours per day / 365 days | | | | | | |
| Agency Approvals | cULus (E258676), CE | | | | | | cULus (E258676), CE, TUV |
| Electrical and General Specifications | | | | | | | |
| Conductor Sizes | 16-12 AWG (1.5 to 2.5 mm ²) | | | | | | |
| Utilization Category | AC15, A300, 3A | | | | | | |
| Thermal Current | 10A | | | | | | |
| Short Circuit Overload Protection | External 10A Fast Acting recommended | | | | | | |
| Rated Insulation Voltage | 600VAC | | | 500VAC | | | |
| Contact Terminals | Stainless steel (Snap action plated brass); Max conductor 1.5 m ² (IDIS), 2.5 m ² (KM, K/K-15); 1 N•m [0.74 lb•ft] torque | | | | | | |
| Maximum Switching Current | 2.5A @24 VDC 6A @ 120VAC, 3A @ 240VDC (720VA Break) | | | | | | |
| Maximum Approach/Withdrawal Speed | 600mm/s [23.6 in/s] | | | | | | NA |
| Enclosure Protection | IP67 (IP69K on all models with both stainless steel head and body) | | | | | | |
| Operating Temperature | -25°C to 80°C [-13°F to 176°F] | | | | | | |
| Vibration | IEC 68-2-6, 10Hz to 55Hz + 1Hz | | | | | | 10Hz to 500Hz 0.35 mm [0.014 in] |
| Lid Screws/Torque | Plated brass 1 N•m [0.74 lb•ft] | Stainless steel T20 Torx 1 N•m [0.74 lb•ft] | Stainless steel 1 N•m [0.74 lb•ft] | | | | Stainless steel T20 Torx 1.5 N•m [1.11 lb•ft] |
| Recommended Mounting Screws/Torque | M4 1.5 N•m [1.11 lb•ft] | M5 4N•m [2.95 lb•ft] | M4 1.5 N•m [1.11 lb•ft] | | M5 4N•m [2.95 lb•ft] | | |
| Head Screws/Torque | Stainless steel, except snap (plated brass) 1 N•m [0.74 lb•ft] | Stainless steel T20 Torx 1 N•m [0.74 lb•ft] | Stainless steel; 1 N•m [0.74 lb•ft] | | | | |

Safety Products



Warning: Safety products sold by AutomationDirect are Safety components only. The purchaser/installer is solely responsible for the application of these components and ensuring all necessary steps have been taken to assure each application and use meets all performance and applicable safety requirements and/or local, national and/or international safety codes as required by the application. AutomationDirect cannot certify that our products, used solely or in conjunction with other AutomationDirect or other vendors' products, will assure safety for any application. Any person using or applying any products sold by AutomationDirect is responsible for learning the safety requirements for their individual application and applying them, and therefore assumes all risks, and accepts full and complete responsibility, for the selection and suitability of the product for their respective application.

AutomationDirect does not provide design or consulting services, and cannot advise whether any specific application or use of our products would ensure compliance with the safety requirements for any application.