

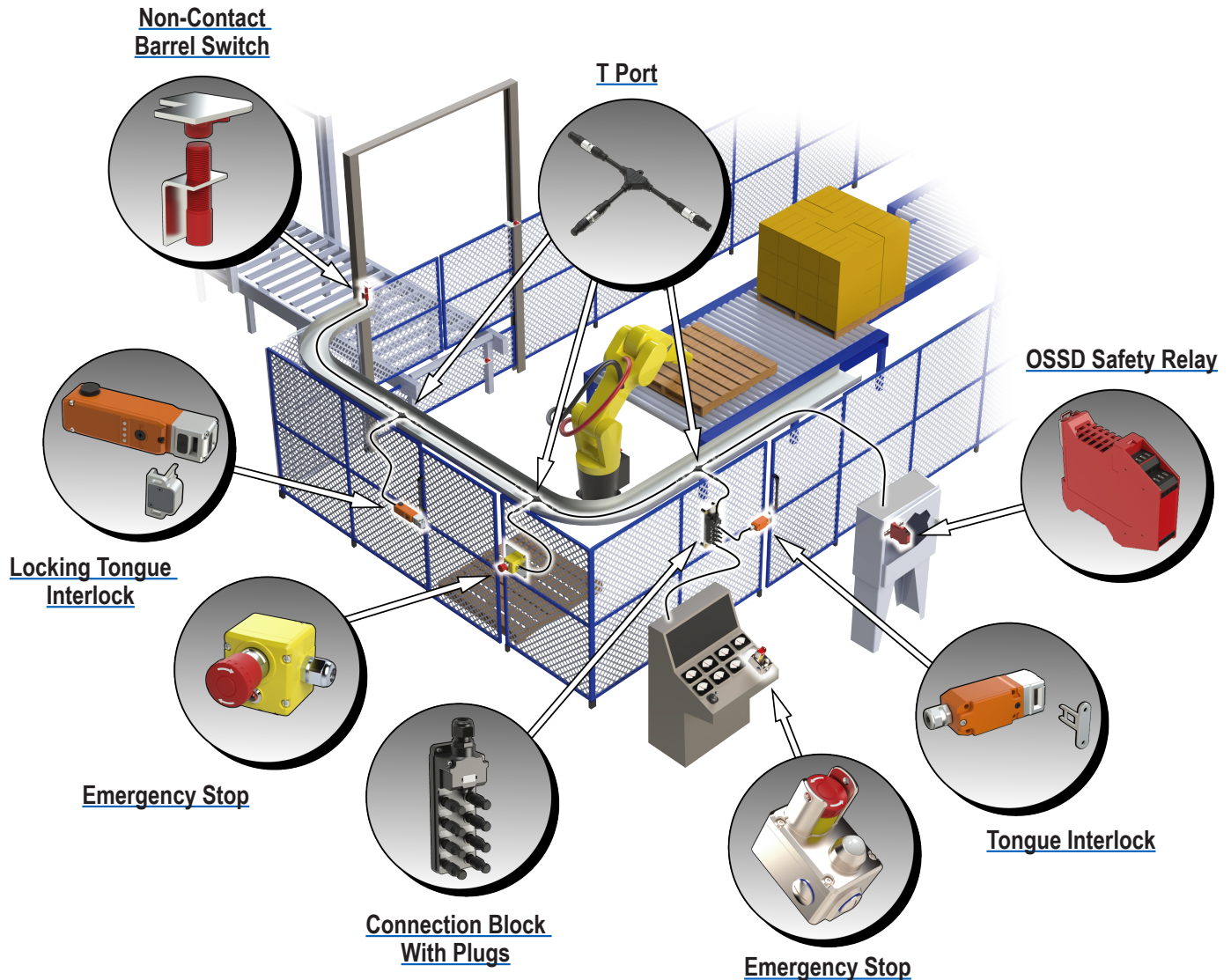


# IDEM Z-Range Safety Switches

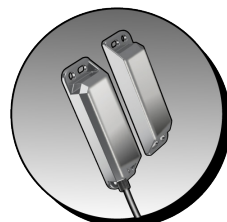
IDEM's Z-Range of products have one set of dual OSSD outputs and one set of dual OSSD inputs. This enables the devices to be wired in series, reducing cost and time associated with wiring back to the panel. Up to 30 Z-Range devices can be connected to one safety relay. These safety switches feature self monitoring OSSD outputs to achieve CAT 4 PLe, according to ISO 13849-1, and SIL3, according to IEC 62061, even when connected in a series.

Components in the Z-Range consists of non contact switches, hinge switches, emergency stop control stations, solenoid locking RFID tongue interlocks, and non-locking tongue interlocks, along with t-port cables, connection blocks and accessories.

## Z-Range Safety Switch Installation Example



Set-ups similar to the one illustrated here may also include these other Z-Range safety components:



Non-Contact Rectangular Switch



Hinge Switch



Cable Pull

# IDEM KLP-Z/KLM-Z/KL3-Z Tongue Interlock Safety Switches with Guard Locking and RFID Coding

## Description

IDEM's KLP/KLM/KL3 Series of RFID Coded Safety Switches has been designed to fit into the leading edge of machine guard doors to provide robust guard locking while also providing a double tamper resistant interlock mechanism.

They are designed to provide robust position interlock detection for moving guards and will remain locked until the solenoid voltage is applied to the switch.

These switches can be used in conjunction with delay timers to provide the solenoid energize signal only after a pre-determined amount of time has passed.

When used in combination with a dual channel safety relay or control device, Non-Contact Safety Switches can be used to provide protection up to Category 4 and PLe to ISO13849-1.

## Features

- Highly effective anti-tamper RFID coding.
- Holding force of 3000N to keep guard doors closed until hazards have been removed.
- Unique rotating head offers both front and end actuation.
- Diecast housing fitting with a robust 316 stainless steel head.
- Choice of standard or flexible actuators.
- For use as directed by ISO14119 and EN ISO12100



## KLP/KLM/KL3 Tongue Interlock Safety Switches with Guard Locking and RFID Coding Selection Guide

Part Number	Price	Body Material	Actuator Type*	Connection	Circuits	Head	Holding Force	To Unlock
<a href="#">KLP-Z-455002AZ</a>	\$347.00	Polyester	Standard actuator	Two 0.5 in [12.7 mm] NPT cable entries	2 OSSD outputs	90° adjustable	2000N	24VDC
<a href="#">KLP-Z-455002HFZ</a>	\$385.00	Polyester	Flexible actuator	Two 0.5 in [12.7 mm] NPT cable entries	2 OSSD outputs	90° adjustable	2000N	24VDC
<a href="#">KLP-Z-455003AZ</a>	\$421.00	Polyester	Standard actuator	8-pin M12 quick-disconnect	2 OSSD outputs	90° adjustable	2000N	24VDC
<a href="#">KLP-Z-455003HFZ</a>	\$459.00	Polyester	Flexible actuator	8-pin M12 quick-disconnect	2 OSSD outputs	90° adjustable	2000N	24VDC
<a href="#">KLM-Z-454002AZ</a>	\$412.00	Die-cast aluminum	Standard actuator	Two 0.5 in [12.7 mm] NPT cable entries	2 OSSD outputs	90° adjustable	3000N	24VDC
<a href="#">KLM-Z-454002HFZ</a>	\$450.00	Die-cast aluminum	Flexible actuator	Two 0.5 in [12.7 mm] NPT cable entries	2 OSSD outputs	90° adjustable	3000N	24VDC
<a href="#">KLM-Z-454003AZ</a>	\$486.00	Die-cast aluminum	Standard actuator	8-pin M12 quick-disconnect	2 OSSD outputs	90° adjustable	3000N	24VDC
<a href="#">KLM-Z-454003HFZ</a>	\$524.00	Die-cast aluminum	Flexible actuator	8-pin M12 quick-disconnect	2 OSSD outputs	90° adjustable	3000N	24VDC
<a href="#">KL3-SS-Z-456002AZ</a>	\$569.00	316 stainless steel	Standard actuator	Two 0.5 in [12.7 mm] NPT cable entries	2 OSSD outputs	90° adjustable	3000N	24VDC
<a href="#">KL3-SS-Z-456002HFZ</a>	\$608.00	316 stainless steel	Flexible actuator	Two 0.5 in [12.7 mm] NPT cable entries	2 OSSD outputs	90° adjustable	3000N	24VDC
<a href="#">KL3-SS-Z-456003AZ</a>	\$646.00	316 stainless steel	Standard actuator	8-pin M12 quick-disconnect	2 OSSD outputs	90° adjustable	3000N	24VDC
<a href="#">KL3-SS-Z-456003HFZ</a>	\$686.00	316 stainless steel	Flexible actuator	8-pin M12 quick-disconnect	2 OSSD outputs	90° adjustable	3000N	24VDC

\* All actuators feature uniquely coded RFID

## Female Quick Disconnect Lead

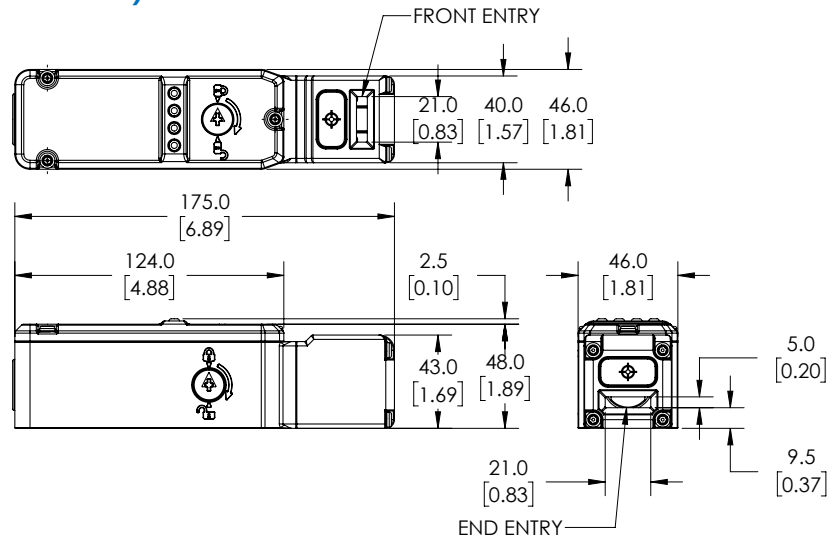
Part Number	Price	Description	Exit Type/Cable Length
<a href="#">140101</a>	\$59.00	Female QD Lead	M12 Female 5m [16.4 ft], 8-pin
<a href="#">140102</a>	\$88.00	Female QD Lead	M12 Female 10m [32.8 ft], 8-pin



# IDEM KLP-Z/KLM-Z/KL3-Z Tongue Interlock Safety Switches with Guard Locking and RFID Coding

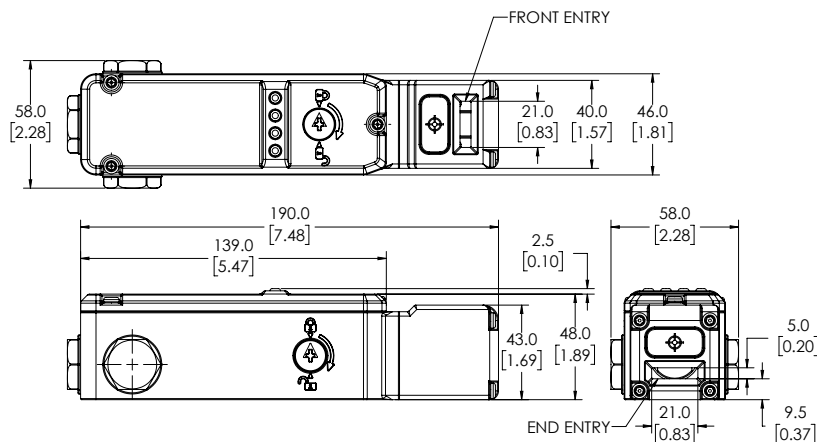
## Dimensions (KLP Series)

mm [in]



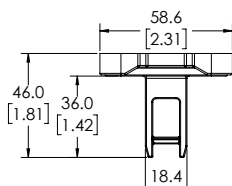
## Dimensions (KLM Series and KL3 Series)

mm [in]



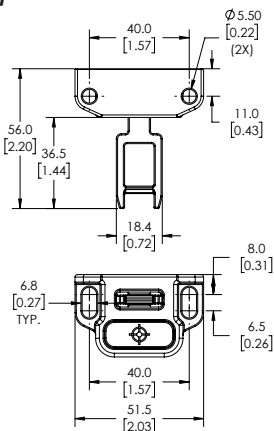
## Key (AZ Standard Actuator)

mm [inch]



## Key (HFZ Flexible Actuator)

mm [inch]



See our website [www.AutomationDirect.com](http://www.AutomationDirect.com) for complete engineering drawings.

# IDEM KLP-Z/KLM-Z/KL3-Z Tongue Interlock Safety Switches with Guard Locking and RFID Coding

## LED Operation

GUARD		INPUT	
Guard Closed and Locked	Green (Steady)	Safety Inputs On	Green (Steady)
Guard Closed and Unlocked	Green (Flash)	Safety Input Missing	Green (Flash)
Code Incorrect	Red (Flash)	Safety Inputs Off	Off
Guard Open	Red	Internal fault	Red (Steady)

OUTPUT	
Safety Outputs On	Green (Steady)
Safety Outputs Off	Off
External fault	Red (Flashing)

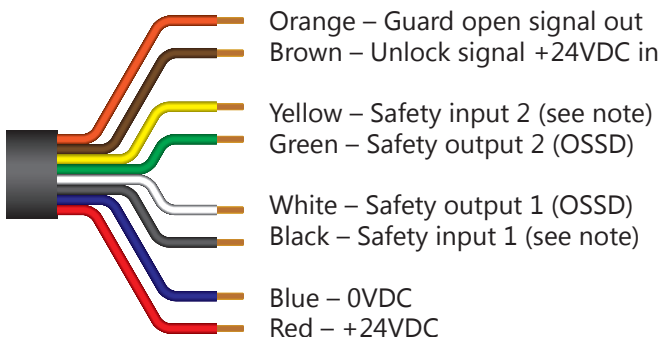
  

SOLENOID	
Solenoid Energised	Red
Solenoid De-energised	Off

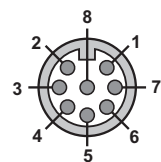


## Wiring

### IDEM Quick Disconnect Leads Color Coding



Connection Colors



Pin View from Switch  
M12 Male

Coded Magnetic Switches Electrical Connections			
Quick Disconnect Connector Pin Out	IDEM Quick Disconnect Leads Color Coding	Terminal	Switch Circuit
2	Red	R+	Supply +24 VDC
3	Blue	0V	Supply 0VDC
7	Black	11	Safety Input 1
1	White	12	Safety Output 1
4	Yellow	21	Safety Input 2
6	Green	22	Safety Output 2
8	Orange	44	Guard open signal +24VDC out
N/A	-	34	Guard unlocked signal +24VDC out
5	Brown	S+	Unlock signal Apply +24VDC

NOTE: Safety outputs 1 and 2 are OSSD signals  
Safety inputs 1 and 2 are 24VDC if not in series or OSSD inputs if in series

## Travel Charts

Actuator Insertion	15.0 mm	5.0 mm	0mm
11/12	Open		Closed
21/22	Open		Closed
44	Guard open signal ON	Guard open signal OFF	
34	Guard unlocked signal (ON when solenoid energized)		

# IDEM KLP-Z/KLM-Z/KL3-Z Tongue Interlock Safety Switches with Guard Locking and RFID

Solenoid Interlock Safety Switches Specifications			
	KLP-Z	KLM-Z	KL3-Z
<b>Safety Classification and Reliability Data</b>			
<b>Switching Reliability (B10d)</b>	2.5M operations at 100mA load		
<b>EN 954-1</b>	Up to Category 4 with Safety Relay		
<b>ISO 13849-1</b>	Up to PLe depending upon system architecture		
<b>EN 62061</b>	Up to SIL3 depending upon system architecture		
<b>Safety Data - Annual Usage</b>	8 cycles per hour / 24 hours per day / 365 days		
<b>MTTFd</b>	771 years		
<b>Agency Approvals</b>	cULus E258676, CE		
<b>Electrical and General Specifications</b>			
<b>Rated Insulation Voltage</b>	500VAC		
<b>Contact Terminals</b>	Plated Brass, Max conductor 1mm <sup>2</sup> , 16AWG; 0.7 N•m [0.52 lb•ft] torque		
<b>Solenoid Wattage</b>	12W		
<b>Solenoid Voltage</b>	24VDC		
<b>Max. Switching Current</b>	Safety contacts 2.5A @24VDC, 6A @ 120VAC, 3A @ 240VDC (720VA Break); Auxiliary contacts max 230V@0.5A		
<b>Maximum Approach/Withdrawal Speed</b>	1000 mm/s [39.37 in/s]	600 mm/s [23.62 in/sec]	600 mm/s [23.62 in/sec]
<b>Enclosure Protection</b>	IP67 (IP69K on all KL3-Z models)		
<b>Operating Temperature</b>	-25°C to +55°C [-13°F to +131°F]	-25°C to +55°C [-13°F to +131°F]	-25°C to +40°C [-13°F to +104°F]
<b>Vibration</b>	IEC 68-2-6, 10-55 Hz + 1Hz		
<b>Lid Screws/Torque</b>	Stainless steel; T20 Torx; 1.5 N•m [1.11 lb•ft]	Stainless steel; T20 Torx; 1N•m [0.74 lb•ft]	Stainless steel; T20 Torx; 1.5 Nm [1.11 lb•ft]
<b>Recommended Mounting Screws/Torque</b>	M5; 4N•m [2.95 lb•ft]		
<b>Head Screws/Torque</b>	Stainless steel, T20 Torx 1.5 N•m [1.11 lb•ft]	Stainless steel; T20 Torx; 1.5 N•m [1.11 lb•ft]	Stainless steel; T20 Torx; 1N•m [0.74 lb•ft]

# IDEM Cables



## Connection Cables

IDEM connection cables are sold as a complete cable that is not meant to be cut into, so the manufacturer doesn't guarantee the internal wire colors will always be the same. It will always be pin 1 to pin 1, pin 2 to pin 2, etc., but the internal colors might change.

Only the pigtail cables have fixed wire colors.



**140201**

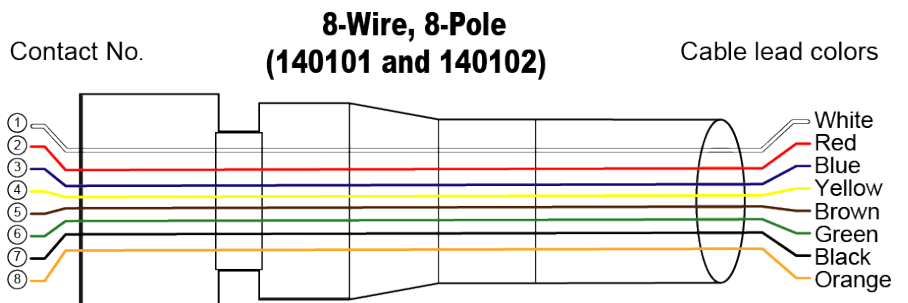
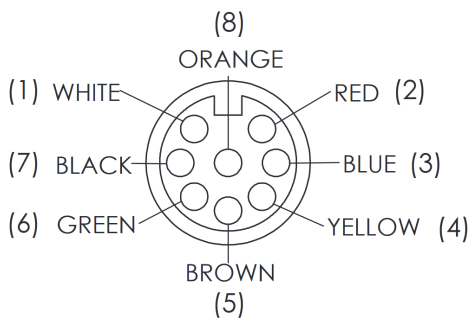
IDEM Connection Cables Selection Chart					
Part Number	Price	Description	Connection	Length	Cable Jacket
<b>140201</b>	\$41.00	Connection cable	8-pin M12 axial female to 8-pin M12 axial male	2m [6.56 ft]	Black PVC
<b>140202</b>	\$51.00	Connection cable	8-pin M12 axial female to 8-pin M12 axial male	5m [16.40 ft]	Black PVC
<b>140203</b>	\$62.00	Connection cable	8-pin M12 axial female to 8-pin M12 axial male	10m [32.81 ft]	Black PVC

Female Quick Disconnect Lead			
Part Number	Price	Description	Exit Type/Cable Length
<b>140101</b>	\$59.00	8-pin M12 female quick disconnect	Pigtail, 5m [16.4 ft]
<b>140102</b>	\$88.00		Pigtail, 10m [32.8 ft]



**140101**

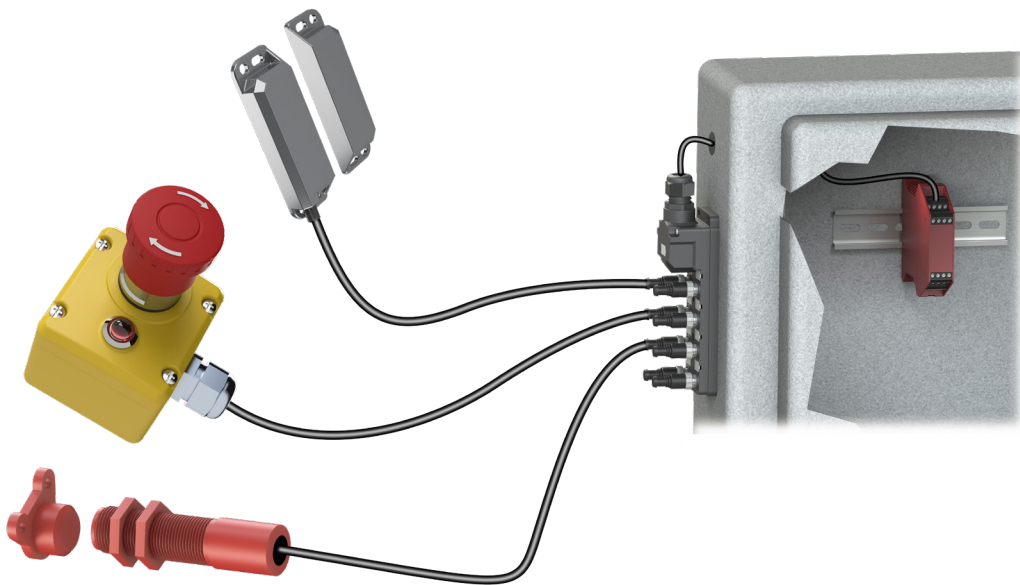
### CONNECTION DETAIL (VIEW X)



**NOTE: Only the pigtail cables have fixed wire colors.**

IDEM Connection Cables General Specifications	
Temperature Rating	105°C [221°F]
Core	22 strands of 0.12 mm bare copper
Inner insulation (Core) Diameter	1.35 (±0.1) mm
Outer Sheath (Jacket) Color	Black (printed)
Outer Insulation	PVC
Inner Insulation	PVC
Number of cores	8 cores (24AWG) UL style 2517
Rated Voltage/Current	250V / 3A

# IDEM M12 Connection Box For Use With Z-Range Switches



## Features

- When combined with the T-port, allows you to connect up to 30 Z-Range devices in series to a single safety controller
- Configured for dual channel to a safety controller
- Shorting plugs must be inserted into all unused ports
- M20 conduit exit; M20 cable gland accepts cable OD 6.5-12.0 mm [0.26-0.47 in]

IDEM M12 Connection Box For Use With Z-Range Switches Selection Chart							
Part Number	Price	Description	Ports	Input Connections	Output Connection	Indicators	Drawing
<a href="#"><u>140210-Z</u></a>	\$262.00	IDEM junction block for use with IDEM Z-Range switches only	8	8-pin M12 sockets	Cable clamp for field-wired connection	24VDC LED	<a href="#"><u>PDF</u></a>
<a href="#"><u>140205</u></a>	\$22.00	Shorting plug, 8 pole, for use with IDEM Z-Range connection blocks	-	-	-	-	<a href="#"><u>PDF</u></a>
<a href="#"><u>140204</u></a>	\$41.00	T-port for use with Z-Range safety switches	-	2 8-pole M12 axial male	1 8-pole M12 axial female	-	<a href="#"><u>PDF</u></a>

NOTE: The appropriate shorting plug must be inserted into all unused ports.



[140210-Z](#)



[140204](#)



[140205](#)

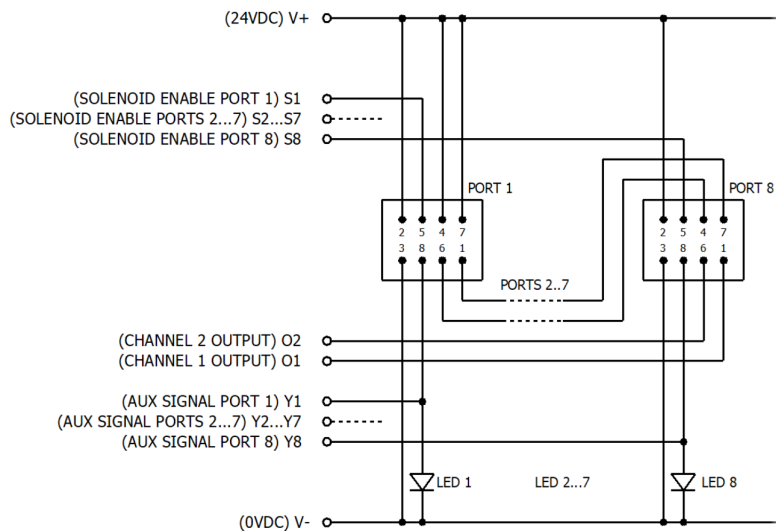
# IDEM Connection Box For Use With Z-Range Switches



## IDEM M12 Connection Box For Use With Z-Range Switches Specifications

<b>Port Connection Type</b>	8-pin M12 female sockets (qty 8)
<b>Operating Temperature</b>	-20 to +40°C [-4 to +104°F]
<b>Supply Voltage</b>	24VDC ±10%
<b>Maximum Current</b>	500mA (each port) if solenoid feed is used
<b>Body Material</b>	Polyester
<b>Internal Terminals</b>	Spring-type clamp for 22-30 AWG conductors
<b>Cable Exit</b>	M20 x 1.5 mm cable gland (M20 cable gland accepts cable OD 6.5 mm to 12.0 mm [0.26 in to 0.47 in])
<b>Mounting</b>	2xM4 bolts, 4.6 mm [0.18 in] diameter clearance holes
<b>Accessory</b>	Shorting plug for unused ports
<b>LEDs (1-8)</b>	Red, auxiliary indication of switch open

## Connections (140210-Z) for Z-Range Switches Only



## Output Terminal Connections

Terminal	Output	Indication	LED Status
<b>Y1</b>	Auxiliary out +24VDC	Switch 1 open	LED 1 on
<b>Y2</b>	Auxiliary out +24VDC	Switch 2 open	LED 2 on
<b>Y3</b>	Auxiliary out +24VDC	Switch 3 open	LED 3 on
<b>Y4</b>	Auxiliary out +24VDC	Switch 4 open	LED 4 on
<b>Y5</b>	Auxiliary out +24VDC	Switch 5 open	LED 5 on
<b>Y6</b>	Auxiliary out +24VDC	Switch 6 open	LED 6 on
<b>Y7</b>	Auxiliary out +24VDC	Switch 7 open	LED 7 on
<b>Y8</b>	Auxiliary out +24VDC	Switch 8 open	LED 8 on
<b>V+</b>	Supply +24VDC		
<b>V-</b>	Supply 0VDC		
<b>S1</b>	Solenoid energize (apply +24VDC (if used))	Port 1	
<b>S2</b>	Solenoid energize (apply +24VDC (if used))	Port 2	
<b>S3</b>	Solenoid energize (apply +24VDC (if used))	Port 3	
<b>S4</b>	Solenoid energize (apply +24VDC (if used))	Port 4	
<b>S5</b>	Solenoid energize (apply +24VDC (if used))	Port 5	
<b>S6</b>	Solenoid energize (apply +24VDC (if used))	Port 6	
<b>S7</b>	Solenoid energize (apply +24VDC (if used))	Port 7	
<b>S8</b>	Solenoid energize (apply +24VDC (if used))	Port 8	
<b>O1</b>	Safety output channel 1		
<b>O2</b>	Safety output channel 2		



# Safety Products



*Warning: Safety products sold by AutomationDirect are Safety components only. The purchaser/installer is solely responsible for the application of these components and ensuring all necessary steps have been taken to assure each application and use meets all performance and applicable safety requirements and/or local, national and/or international safety codes as required by the application. AutomationDirect cannot certify that our products, used solely or in conjunction with other AutomationDirect or other vendors' products, will assure safety for any application. Any person using or applying any products sold by AutomationDirect is responsible for learning the safety requirements for their individual application and applying them, and therefore assumes all risks, and accepts full and complete responsibility, for the selection and suitability of the product for their respective application.*

*AutomationDirect does not provide design or consulting services, and cannot advise whether any specific application or use of our products would ensure compliance with the safety requirements for any application.*