



Emergency Stop Control Stations

Features

- 3-pole positive guided contacts
- Plastic housings (IP67) or stainless steel 316 housings (IP69K/NEMA 6)
- 40mm twist-to-release mushroom head operator
- Conformance to ISO 13850, IEC 60947-5-1 and IEC 60947-5-5
- 2 conduit entries (all entries sealed)
- UL File E365665
- Lid safety trip mechanism ensures that safety contacts will open if the lid is removed
- Models available with button protection guard and padlock holes
- Includes one tamper-proof T20 Torx bit for stainless steel versions



3-Pole Emergency Stop Control Stations						
Part Number	Housing Type	Contacts	Wiring Diagram	Conduit Entry	Price	Drawing Link
ES-P-230001	Plastic	2 N.C., 1 N.O.	Figure 1	Knockout (2) M20 (2) 1/2" NPT	\$39.50	PDF
ES-P-230002		3 N.C.	Figure 2		\$39.50	PDF
ES-SS-231002	Stainless steel 316	2 N.C., 1 N.O.	Figure 1	(2) 1/2" NPT	\$184.00	PDF
ES-SS-231004		3 N.C.	Figure 2		\$184.00	PDF
ES-SSP-231006	Stainless steel 316 with button protection guard and padlock holes	2 N.C., 1 N.O.	Figure 1	(2) 1/2" NPT	\$195.00	PDF
ES-SSP-231008		3 N.C.	Figure 2		\$195.00	PDF



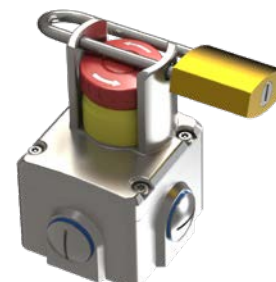
ES-P-230001



ES-SS-231002



ES-SSP-231006



Type ESL-SSLP with button protection guard and padlock holes

(Padlock hole diameter 1/4". Padlock shaft must exceed 2" closed)

Safety Classification and Reliability Data	
Mechanical Reliability B10d	1.5 x 10 ⁶ operations at 100mA load
ISO 13849-1	Up to PLe depending upon system architecture
EN 62061	Up to SIL3 depending upon system architecture
Safety Data - Annual Usage	8 cycles per hour / 24 hours per day / 365 days
PFHd	< 1.0 x 10 ⁷
Proof Test Interval (Life)	21 years
MTTFd	214 years
Electrical and General Specifications	
Enclosure / Cover	Polyester or Stainless Steel 316
IP Rating / NEMA	IP67 Plastic / IP69K Stainless Steel / NEMA 6
Mounting	(4) M4
Mounting Position	Any
Conduit Entries	(2) 1/2" NPT for Stainless Steel housing Knockout (2) M20 / (2) 1/2" for Plastic housing
Torque Settings	Mounting: M4 4.0 N·m Lid: T20 Torx M4 1.5 N·m Terminals: 1.0 N·m
Ambient Temperature	-25 to +80°C (-13 to +176°F)
Vibration Resistance	0.35 mm @ 10-500 Hz
Shock Resistance	15g @ 11ms
Weight	Plastic: 250g (0.55 lb) Stainless Steel: 1000g (2.20 lb)
Contact Type	IEC 947-5-1 double break type Zb Snap action up to 3 N.C. (positive break) 1 N.O. (Auxiliary)
Contact Material	Silver
Termination	Clamp up to 2.5 mm ² conductors
IEC / NEMA Contact Rating	Utilization category: AC15 / A300
Operational Rating	240VAC 3A / 120VAC 6A
Thermal Current (Ith)	10A
Rated Insulation Voltage (Ui)	500V
Withstand Voltage (Uimp)	2500V
Short Circuit Overload Protection	Fuse externally 10A (fuse type FF)
Approvals	IEC 60947-5-1, IEC 60947-5-5, EN62061, UL508, ISO13850, ISO13849-1

Note: To obtain the most current agency approval information, see the Agency Approval Checklist section on the specific part number's web page.

Emergency Stop Control Stations

Wiring Diagrams

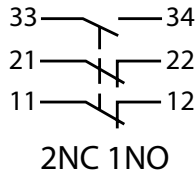


Figure 1

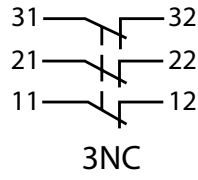


Figure 2



Emergency Stop Control Stations

Features

- 4-pole positive guided contacts
- Stainless Steel 316 housings (IP69K/NEMA 6)
- 40mm twist-to-release mushroom head operator
- Conformance to ISO 13850,
- IEC 60947-5-1 and IEC 60947-5-5
- 3 conduit entries (all entries sealed)
- Emergency stop legend plate included
- UL File E365665
- Lid safety trip mechanism ensures that safety contacts will open if the lid is removed
- Models available with button protection guard and padlock holes
- Models available with 2-color LED
- Includes one tamper-proof T20 Torx bit for stainless steel versions



ESL-SS-232002



ESL-SSP-232010



ESL-SSL-232018-AS



ESL-SSLP-232024-AS

4-Pole Emergency Stop Control Stations						
Part Number	Housing Type	Contacts	Wiring Diagram	Conduit Entry	Price	Drawing Link
<u>ESL-SS-232002</u>	Stainless steel 316	2 N.C., 2 N.O.	Figure 1	(3) 1/2" NPT	\$193.00	<u>PDF</u>
<u>ESL-SS-232004</u>		3 N.C., 1 N.O.	Figure 2		\$193.00	<u>PDF</u>
<u>ESL-SS-232006</u>		4 N.C.	Figure 3		\$193.00	<u>PDF</u>
<u>ESL-SSP-232010</u>	Stainless steel 316 with protection guard and padlock holes	2 N.C., 2 N.O.	Figure 1		\$204.00	<u>PDF</u>
<u>ESL-SSP-232012</u>		3 N.C., 1 N.O.	Figure 2		\$204.00	<u>PDF</u>
<u>ESL-SSP-232014</u>		4 N.C.	Figure 3		\$204.00	<u>PDF</u>
<u>ESL-SSL-232018-AS</u>	Stainless steel 316 with 2-color 24VDC LED (steady green, steady red)	2 N.C., 2 N.O.	Figure 1		\$233.00	<u>PDF</u>
<u>ESL-SSL-232020-AS</u>		3 N.C., 1 N.O.	Figure 2		\$233.00	<u>PDF</u>
<u>ESL-SSL-232018-BS</u>	Stainless steel 316 with 2-color 110VAC LED (steady green, steady red)	2 N.C., 2 N.O.	Figure 1		\$238.00	<u>PDF</u>
<u>ESL-SSL-232020-BS</u>		3 N.C., 1 N.O.	Figure 2		\$238.00	<u>PDF</u>
<u>ESL-SSLP-232024-AS</u>	Stainless steel 316 with 2-color 24VDC LED and protection guard with padlock holes	2 N.C., 2 N.O.	Figure 1		\$245.00	<u>PDF</u>
<u>ESL-SSLP-232026-AS</u>		3 N.C., 1 N.O.	Figure 2		\$245.00	<u>PDF</u>
<u>ESL-SSLP-232024-BS</u>	Stainless 316 steel with 2-color 110VAC LED and protection guard with padlock holes	2 N.C., 2 N.O.	Figure 1		\$250.00	<u>PDF</u>
<u>ESL-SSLP-232026-BS</u>		3 N.C., 1 N.O.	Figure 2	\$250.00	<u>PDF</u>	



Type ESL-SSLP with button protection guard and padlock holes

(Padlock hole diameter 1/4". Padlock shaft must exceed 2" closed)

Emergency Stop Control Stations

Safety Classification and Reliability Data	
Mechanical Reliability B10d	1.5 x 10 ⁶ operations at 100mA load
ISO 13849-1	Up to PLe depending upon system architecture
EN 62061	Up to SIL3 depending upon system architecture
Safety Data - Annual Usage	8 cycles per hour / 24 hours per day / 365 days
PFHd	< 1.0 x 10 ⁻⁷
Proof Test Interval (Life)	21 years
MTTFd	214 years
Electrical and General Specifications	
Enclosure / Cover	Stainless Steel 316
IP Rating / NEMA	IP69K / NEMA 6
Mounting	(4) M4
Mounting Position	Any
Conduit Entries	(3) ½" NPT
Torque Settings	Mounting: M4 4.0 N·m Lid: T20 Torx M4 1.5 N·m Terminals: 1.0 N·m
Ambient Temperature	-25 to +80°C (-13F to +176°F)
Vibration Resistance	0.35 mm @ 10-500 Hz
Shock Resistance	15g @ 11ms
Weight	820g (1.81 lb)
Contact Type	IEC 947-5-1 double break type Zb Snap action up to 4 N.C. (positive break) 2 N.O. (Auxiliary)
Contact Material	Silver
Termination	Clamp up to 2.5 mm ² conductors
IEC / NEMA Contact Rating	Utilization category: AC15 / A300
Operational Rating	240VAC 3A / 120VAC 6A
Thermal Current (I_{th})	10A
Rated Insulation Voltage (U_i)	500V
Withstand Voltage (U_{imp})	2500V
Short Circuit Overload Protection	Fuse externally 10A (fuse type FF)
Approvals	IEC 60947-5-1, IEC 60947-5-5, EN62061, UL508, ISO13850, ISO13849-1

Wiring Diagrams

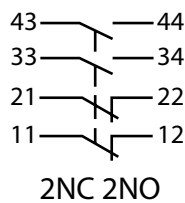


Figure 1

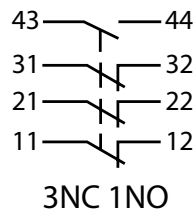


Figure 2

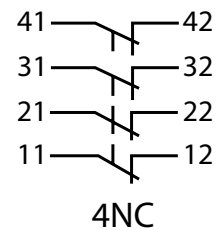


Figure 3

LED Wiring Note: Black (or Terminal 2) is 0V (or Neutral for 110V AC versions). When power is applied to the Red wire (or Terminal 1), the LED will illuminate Red. When power is applied to the Green wire (or Terminal 3), the LED will illuminate Green.