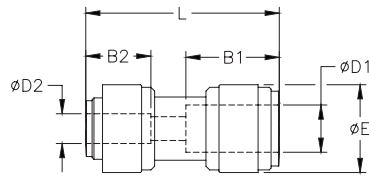




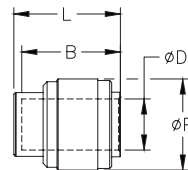
Potable Water Push-to-Connect Fittings

HydroMode push-to-connect union straight reducer fitting with acetel body and synthetic rubber o-ring. For use with polyethylene and other flexible tubing. Five fittings per package.



| HydroMode™ Union Straight Reducer | | | | | | | | | | |
|--|---------|--------------------|------------|------------|------|------|------|------|----------------------|---------------|
| Inch Sizes - dimensions in millimeters (mm) unless otherwise noted | | | | | | | | | | |
| Part No. | Price | Size (inch) | ØD1 (inch) | ØD2 (inch) | B1 | B2 | ØE | L | Package Weight (lbs) | Qty. per pack |
| <u>UR516-14-P</u> | \$8.50 | 5/16 in. x 1/4 in. | 5/16 | 1/4 | 17.5 | 16.9 | 17.6 | 36.8 | 0.1 | 5 |
| <u>UR38-14-P</u> | \$11.00 | 3/8 in. x 1/4 in. | 3/8 | 1/4 | 20.2 | 16.9 | 20.0 | 42.1 | 0.1 | 5 |
| <u>UR38-516-P</u> | \$10.00 | 3/8 in. x 5/16 in. | 3/8 | 5/16 | 20.2 | 17.5 | 20.0 | 42.5 | 0.1 | 5 |
| <u>UR12-516-P</u> | \$11.50 | 1/2 in. x 5/16 in. | 1/2 | 5/16 | 25.1 | 17.5 | 23.6 | 52.0 | 0.2 | 5 |
| <u>UR12-38-P</u> | \$12.00 | 1/2 in. x 3/8 in. | 1/2 | 3/8 | 25.1 | 25.1 | 23.6 | 52.4 | 0.2 | 5 |

HydroMode push-to-connect union cap fitting with acetel body and synthetic rubber o-ring. For use with polyethylene and other flexible tubing. Five fittings per package.



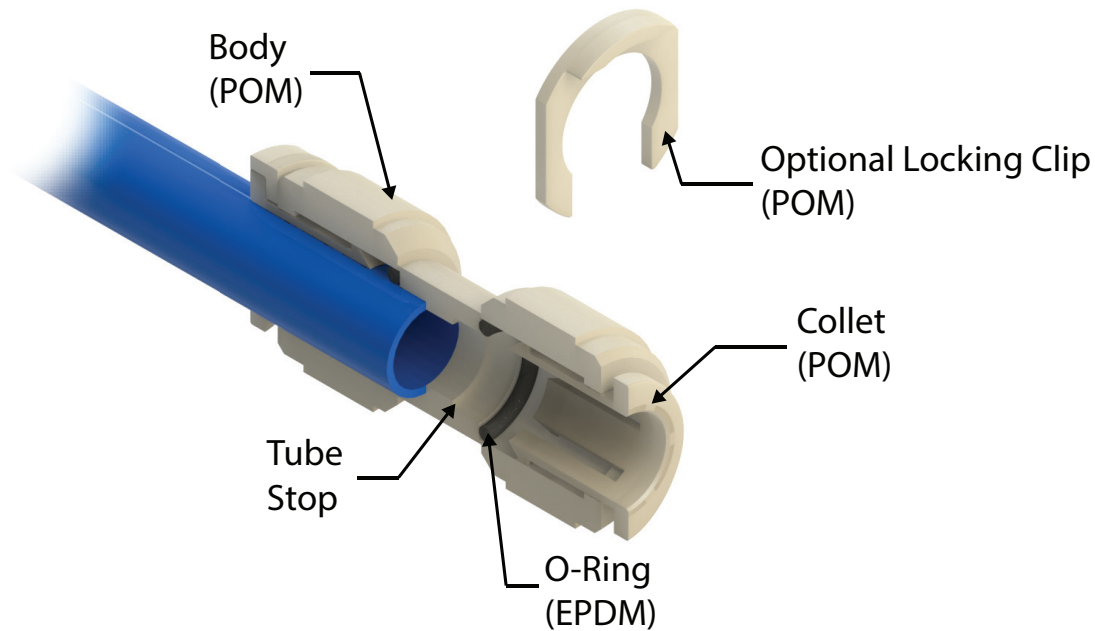
| HydroMode™ Union Cap | | | | | | | | |
|--|--------|-------------|-----------|------|------|------|----------------------|---------------|
| Inch Sizes - dimensions in millimeters (mm) unless otherwise noted | | | | | | | | |
| Part No. | Price | Size (inch) | ØD (inch) | ØP | B | L | Package Weight (lbs) | Qty. per pack |
| <u>UC14-P</u> | \$8.25 | 1/4 in. | 1/4 | 15.5 | 16.9 | 18.9 | 0.1 | 5 |
| <u>UC516-P</u> | \$8.25 | 5/16 in. | 5/16 | 17.6 | 17.5 | 19.5 | 0.1 | 5 |
| <u>UC38-P</u> | \$8.50 | 3/8 in. | 3/8 | 20.0 | 20.2 | 22.2 | 0.1 | 5 |

HydroMode™ Potable Water Push-to-Connect Fittings

HydroMode push-to-connect fittings are designed to work with potable water and beverages. Installing or removing flexible tubing is quick and easy. All fittings are made of NSF approved materials with NSF-51® and NSF-61® certifications. The body and collet of the fittings are made from polyoxymethylene (POM) also known as acetal, while the o-rings are made from ethylene propylene diene monomer (EPDM) which is a type of synthetic rubber.

Features

- Designed for potable water and beverages
- NSF-51 and NSF-61 certified
- Easy tubing installation and removal
- Optional retaining clips prevent accidental tube removal
- Fittings rated for up to 145psi at 70°C (158°F)



*Push-to-Connect Fitting
Cut-away Diagram*