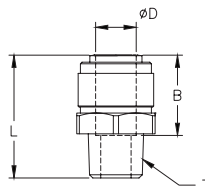
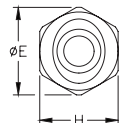


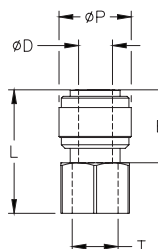
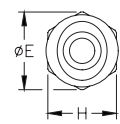
# HydroMode™ Potable Water Push-to-Connect Fittings

HydroMode push-to-connect male straight fitting with acetel body and synthetic rubber o-ring. For use with polyethylene and other flexible tubing. Five fittings per package.



HydroMode™ Male Straight										
Inch Sizes - dimensions in millimeters (mm) unless otherwise noted										
Part No.	Price	Size (inch)	ØD (inch)	T (NPTF)	B	ØE	H (inch)	L	Package Weight (lbs)	Qty. per pack
<a href="#">MS532-18N-P</a>	\$5.00	5/32 in. x 1/8 NPT	5/32	1/8	14.7	17.8	15.8 (5/8)	22.2	0.1	5
<a href="#">MS532-14N-P</a>	\$6.00	5/32 in. x 1/4 NPT	5/32	1/4	14.7	17.8	15.8 (5/8)	25.3	0.1	5
<a href="#">MS14-18N-P</a>	\$6.00	1/4 in. x 1/8 NPT	1/4	1/8	16.9	17.8	15.8 (5/8)	27.0	0.1	5
<a href="#">MS14-14N-P</a>	\$6.25	1/4 in. x 1/4 NPT	1/4	1/4	16.9	17.8	15.8 (5/8)	27.0	0.1	5
<a href="#">MS14-38N-P</a>	\$8.50	1/4 in. x 3/8 NPT	1/4	1/4	16.9	21.4	19.0 (3/4)	26.1	0.1	5
<a href="#">MS516-18N-P</a>	\$6.25	5/16 in. x 1/8 NPT	5/16	5/16	17.5	21.4	19.0 (3/4)	28.4	0.1	5
<a href="#">MS516-14N-P</a>	\$6.50	5/16 in. x 1/4 NPT	5/16	5/16	17.5	21.4	19.0 (3/4)	27.9	0.1	5
<a href="#">MS516-38N-P</a>	\$10.00	5/16 in. x 3/8 NPT	5/16	5/16	17.5	21.4	19.0 (3/4)	26.5	0.1	5
<a href="#">MS516-12N-P</a>	\$6.00	5/16 in. x 1/2 NPT	5/16	5/16	17.5	25.0	22.2 (7/8)	33.5	0.1	5
<a href="#">MS38-18N-P</a>	\$12.50	3/8 in. x 1/8 NPT	3/8	3/8	20.2	23.0	20.6 (3/4)	30.4	0.1	5
<a href="#">MS38-14N-P</a>	\$10.00	3/8 in. x 1/4 NPT	3/8	3/8	20.2	23.0	20.6 (3/4)	34.3	0.1	5
<a href="#">MS38-38N-P</a>	\$11.50	3/8 in. x 3/8 NPT	3/8	3/8	20.2	23.0	20.6 (3/4)	29.6	0.1	5
<a href="#">MS38-12N-P</a>	\$16.50	3/8 in. x 1/2 NPT	3/8	1/2	20.2	25.0	22.2 (7/8)	33.9	0.1	5
<a href="#">MS12-38N-P</a>	\$15.00	1/2 in. x 3/8 NPT	1/2	3/8	25.1	27.4	25.4 (1.0)	38.4	0.1	5
<a href="#">MS12-12N-P</a>	\$15.50	1/2 in. x 1/2 NPT	1/2	1/2	25.1	27.4	25.4 (1.0)	37.9	0.1	5

HydroMode push-to-connect female straight fitting with acetel body and synthetic rubber o-ring. For use with polyethylene and other flexible tubing. Five fittings per package.



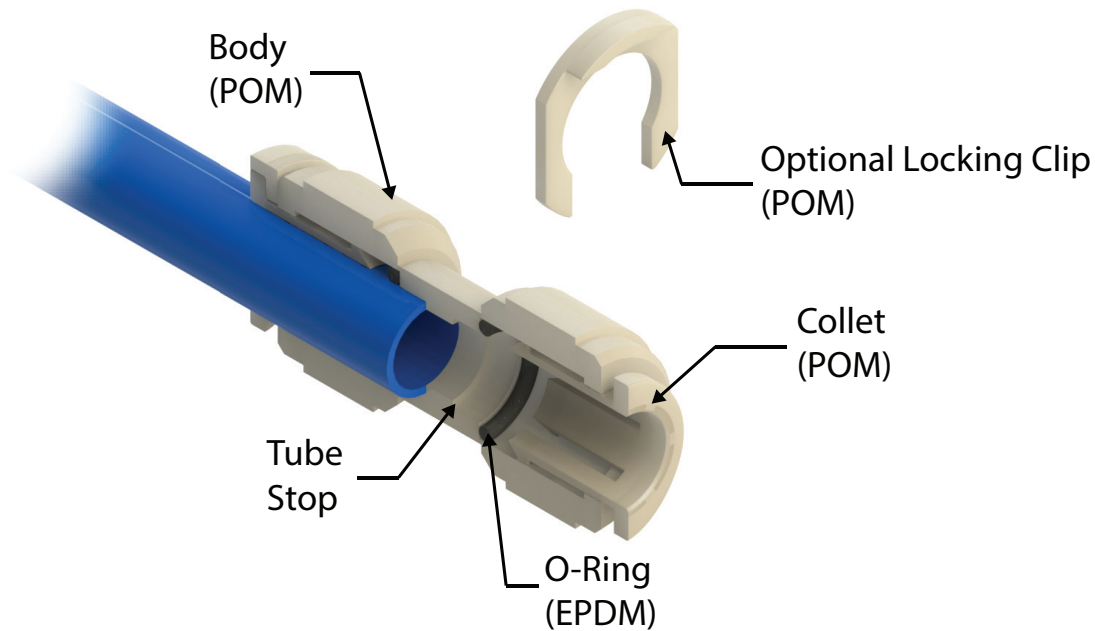
HydroMode™ Female Straight											
Inch Sizes - dimensions in millimeters (mm) unless otherwise noted											
Part No.	Price	Size (inch)	ØD (inch)	ØP	T (NPTF)	B	ØE	H (Hex)	L	Package Weight (lbs)	Qty. per pack
<a href="#">FS14-18N-P</a>	\$9.25	1/4 in. x 1/8 NPT	1/4	15.5	1/8	16.9	19.0	17.0	30.9	0.1	5
<a href="#">FS14-14N-P</a>	\$9.25	1/4 in. x 1/4 NPT	1/4	15.5	1/4	16.9	21.5	19.0	30.9	0.1	5
<a href="#">FS38-14N-P</a>	\$10.00	3/8 in. x 1/4 NPT	3/8	20.0	1/4	20.2	21.5	19.0	34.2	0.1	5

# HydroMode™ Potable Water Push-to-Connect Fittings

HydroMode push-to-connect fittings are designed to work with potable water and beverages. Installing or removing flexible tubing is quick and easy. All fittings are made of NSF approved materials with NSF-51® and NSF-61® certifications. The body and collet of the fittings are made from polyoxymethylene (POM) also known as acetal, while the o-rings are made from ethylene propylene diene monomer (EPDM) which is a type of synthetic rubber.

## Features

- Designed for potable water and beverages
- NSF-51 and NSF-61 certified
- Easy tubing installation and removal
- Optional retaining clips prevent accidental tube removal
- Fittings rated for up to 145psi at 70°C (158°F)



*Push-to-Connect Fitting  
Cut-away Diagram*