

# Hazardous Area Thermostats



011850-00

## Applications

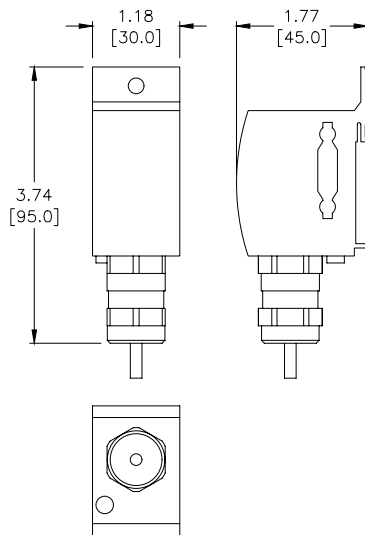
Compact, small mechanical thermostat offering a high response accuracy, small switching difference, and a very long service life (switching cycles). This thermostat of temperature class T6 (185°F/85°C max.) is utilized for the regulation of heaters deployed in hazardous areas. High current performance allows direct control of a heater.

## Features

- For use in hazardous areas
- High switching capacity
- Compact design
- "Pre-set" temperatures
- Ready to use with strain relief
- Temperature class T6
- DIN rail mounting



## Dimensions



Hazardous Area Thermostat Specifications	
<b>Temperature Class</b>	T6
<b>Ex Protection Type Ex 11 2 GD Gases</b>	Ex db IIC T6 Gb
<b>Dusts</b>	Ex tb IIIC T85 °C Db IP66
<b>Ambient Temperature</b>	-76 to 185°F [-60 to 85°C]
<b>Sensor Element</b>	Thermostatic bimetal
<b>Service Life</b>	> 100 000 cycles
<b>Max. Switching Capacity</b>	AC 250V 10A* DC 24V 1A
<b>Min. Switching Capacity</b>	DC 1.5V 5mA
<b>Max. Inrush Current</b>	AC 16A for 12 sec.
<b>Connection</b>	Silicone cable (halogen-free) 3 x 18 AWG (0.82 mm <sup>2</sup> ), length 3ft [1m]
<b>Housing</b>	aluminum, silver anodized
<b>Mounting</b>	Clip for 35mm DIN rail, EN 60715 M5 screw mounting, optional sideways mounting
<b>Mounting Position</b>	Variable
<b>Operating / Storage Humidity</b>	max. 90 % RH (non-condensing)
<b>Storage Temperature</b>	-76 to 185°F [-60 to 85°C]
<b>Weight</b>	0.66 lb [300 g]
<b>Protection Type / Protection Class</b>	IP66 / I (grounded)
<b>Approvals</b>	EPS 16 ATEX 1 118 X IECEx EPS 16.0054X EAC, CE 0081 Ex 11 2 GD
<b>Note:</b> *Currents above 4 A affect the switching difference.	

Hazardous Area Thermostat				
PartNumber	Price	Contact Type	Switch Temperature	Switching Difference (Hysteresis)
<b>011850-00</b>	\$126.00	Normally Closed	59°F ±5°F [15°C ±3K]	9°F ± 5°F / tolerance [5°C ± 3K]
<b>011851-00</b>	\$126.00	Normally Closed	77°F ±5°F [25°C ±3K]	9°F ± 5°F / tolerance [5 °C ± 3K]