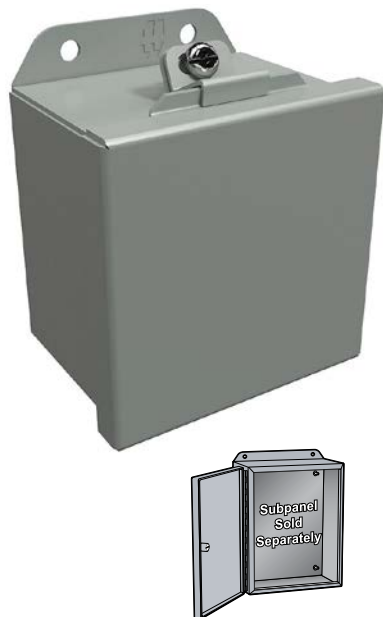


NEMA 4 and 12 Lift-Off Cover Wall-Mount



Applications

- Designed for use as instrument enclosures, electric, hydraulic or pneumatic control housings, electrical junction boxes, or terminal wiring enclosures.
- Provides some protection from falling dirt, dust, oil, and water.

Construction

- Body formed from 16-gauge or 14-gauge steel. Covers are formed from 14-gauge steel.
- Smooth, continuously welded seams without knockouts, cutouts, or holes.
- 14-gauge welded mounting brackets
- Lift-off cover is secured with stainless steel clamps and stainless steel screws and retained with a stainless steel chain when open.
- Seamless poured-in-place gasket.
- Internal threaded weld studs are provided for mounting subpanels.
- A bonding stud is provided on the door and a grounding stud is provided on the enclosure.

Finish

- Cover and enclosure are phosphatized and finished in ANSI 61 gray recoatable powder coating.

Listings

- UL 508A Type 3R, 4, 12, and 13 [UL File E65324]
- CSA Type 3R, 4, 12, and 13 [CSA File LR21001]
- Complies with
 - NEMA Type 3R, 4, 12, and 13
 - IEC 60529, IP66



NEMA 4 and 12 Lift-Off Cover Wall-Mount

Part Number	Price	Enclosure Size HxWxD	Subpanels				Size HxW	Drawing Link
			Painted	Aluminum	Galvanized	Stainless		
HJ443LP	\$56.00	4.31 x 4.31 x 3.20 [109 x 109 x 81]	—	—	—	—	—	PDF
HJ444LP	\$59.00	4.31 x 4.31 x 4.20 [109 x 109 x 107]	—	—	—	—	—	PDF
HJ643LP	\$63.00	6.31 x 4.31 x 3.20 [160 x 109 x 81]	14R0503	14A0503	14G0503	14R0503SS	4.88 x 2.88 [124 x 73]	PDF
HJ644LP	\$68.00	6.31 x 4.31 x 4.20 [160 x 109 x 107]	14R0503	14A0503	14G0503	14R0503SS	4.88 x 2.88 [124 x 73]	PDF
HJ664LP	\$73.00	6.31 x 6.31 x 4.20 [160 x 160 x 107]	14R0505	14A0505	14G0505	14R0505SS	4.88 x 4.88 [124 x 124]	PDF
HJ863LP	\$77.00	8.31 x 6.31 x 3.70 [211 x 160 x 94]	14R0705	14A0705	14G0705	14R0705SS	6.75 x 4.88 [171 x 124]	PDF
HJ1084LP	\$98.00	10.31 x 8.31 x 4.20 [262 x 211 x 107]	14R0907	14A0907	14G0907	14R0907SS	8.75 x 6.88 [222 x 175]	PDF
HJ12105LP	\$126.00	12.31 x 10.31 x 5.20 [313 x 262 x 132]	14R1109	14A1109	14G1109	14R1109SS	10.75 x 8.88 [273 x 226]	PDF
HJ14126LP	\$164.00	14.31 x 12.31 x 6.20 [363 x 313 x 157]	14R1311	14A1311	14G1311	14R1311SS	12.75 x 10.88 [324 x 276]	PDF
HJ16146LP	\$191.00	16.31 x 14.31 x 6.20 [414 x 363 x 157]	14R1513	14A1513	14G1513	14R1513SS	14.75 x 12.88 [375 x 327]	PDF
HJ14128LP	\$194.00	14.31 x 12.31 x 8.20 [363 x 313 x 208]	14R1311	14A1311	14G1311	14R1311SS	12.75 x 10.88 [324 x 276]	PDF
HJ161410LP	\$233.00	16.31 x 14.31 x 10.20 [414 x 363 x 259]	14R1513	14A1513	14G1513	14R1513SS	14.75 x 12.88 [375 x 327]	PDF

Note: Dimensions in inches [millimeters].

NEMA 4 and 12 Lift-Off Cover Wall-Mount



Dimensions

