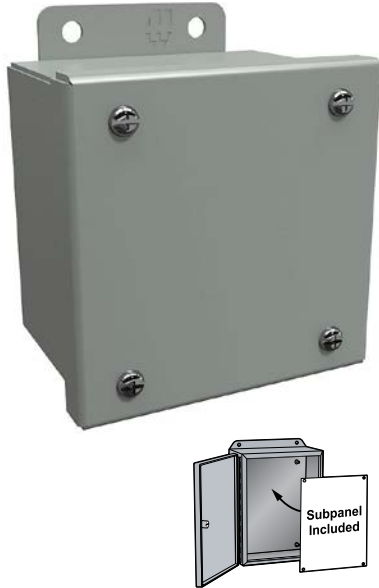


NEMA 12 and 13 Lift-Off Screw Cover Wall-Mount



Applications

- Designed for use as instrument enclosures, electric, hydraulic or pneumatic control housings, electrical junction boxes, or terminal wiring enclosures.
- Provides some protection from falling dirt, dust, oil, and water.

Construction

- Body formed from 16-gauge or 14-gauge steel. Covers are formed from 14-gauge steel.
- Smooth, continuously welded seams without knockouts, cutouts, or holes.
- 14-gauge welded mounting brackets
- Cover is secured with captive, plated steel screws, threaded into sealed wells.
- Oil-resistant gaskets are permanently secured.
- Models larger than 4 x 4 in [102 x 102 mm] include a removable 14-gauge subpanel.
- Internal threaded weld studs are provided for mounting subpanels.
- A bonding stud is provided on the door and a grounding stud is provided on the enclosure.

Finish

- Cover and enclosure are phosphatized and finished in ANSI 61 gray recoatable powder coating.
- Removable subpanel is finished in white RAL9003 powder coating.

Listings

- UL 508A Type 12 and 13 [UL file E65324]
- CSA Type 12 and 13 [CSA file LR21001]
- Complies with
 - NEMA Type 12 and 13
 - IEC 60529, IP54



NEMA 12 and 13 Lift-Off Screw Cover Wall-Mount

Part Number	Price	Enclosure Size HxWxD	Subpanels					Drawing Link
			Painted (included)	Aluminum	Galvanized	Stainless	Size HxW	
1414SCA	\$56.00	4.31 x 4.31 x 3.17 [109 x 109 x 81]	—	—	—	—	—	PDF
1414SCC	\$69.00	6.31 x 4.31 x 3.17 [160 x 109 x 81]	14R0503	14A0503	14G0503	14R0503SS	4.88 x 2.88 [124 x 73]	PDF
1414SCE	\$81.00	6.31 x 6.31 x 4.17 [160 x 160 x 106]	14R0505	14A0505	14G0505	14R0505SS	4.88 x 4.88 [124 x 124]	PDF
1414SCG	\$87.00	8.31 x 6.31 x 3.67 [211 x 160 x 93]	14R0705	14A0705	14G0705	14R0705SS	6.75 x 4.88 [171 x 124]	PDF
1414SCI	\$109.00	10.31 x 8.31 x 4.17 [262 x 211 x 106]	14R0907	14A0907	14G0907	14R0907SS	8.75 x 6.88 [222 x 175]	PDF
1414SCK	\$144.00	12.31 x 10.31 x 5.17 [313 x 262 x 131]	14R1109	14A1109	14G1109	14R1109SS	10.75 x 8.88 [273 x 226]	PDF
1414SCM6	\$184.00	14.31 x 12.31 x 6.17 [363 x 313 x 157]	14R1311	14A1311	14G1311	14R1311SS	12.75 x 10.88 [324 x 276]	PDF
1414SCO6	\$216.00	16.31 x 14.31 x 6.17 [414 x 363 x 157]	14R1513	14A1513	14G1513	14R1513SS	14.75 x 12.88 [375 x 327]	PDF
1414SCM8	\$259.00	14.31 x 12.31 x 8.17 [363 x 313 x 208]	14R1311	14A1311	14G1311	14R1311SS	12.75 x 10.88 [324 x 276]	PDF
1414SCO10	\$353.00	16.31 x 14.31 x 8.17 [414 x 363 x 208]	14R1513	14A1513	14G1513	14R1513SS	14.75 x 12.88 [375 x 327]	PDF

Note: Dimensions in inches [millimeters].

NEMA 12 and 13 Lift-Off Screw Cover Wall-Mount



Dimensions

