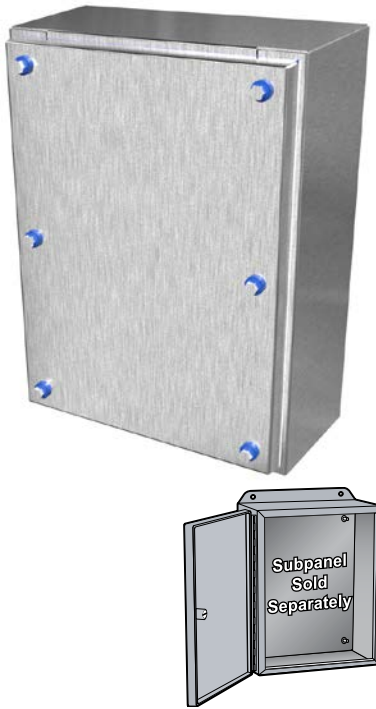


IP69K Sanitary Screw Cover



Features

- Designed to enclose electrical and/or electronic equipment and protect against harsh, sanitary environments for junction box and wall-mount applications.
- Sloped on four sides prevent water from pooling on top regardless of enclosure orientation.
- Hex head screws and door-edge mounted silicone gasket allow for easy cleaning in sanitary environments.

Construction

- Formed 304 stainless steel with a smooth, #4 dairy finish.
- Sloped 3° on all four sides.
- Continuously welded seams ground smooth.
- Hex head screw cover can be completely removed for modifications.
- Silicone gasket mounts around entire door edge allowing for efficient cleaning in sanitary environments.
- Gasket can be easily removed and reinstalled for cleaning or replacement. Additional silicone gaskets can be ordered separately.
- Formed lip on enclosure to exclude flowing liquids and contaminants.
- Collar studs provided for mounting subpanel.
- Includes hardware kit with panel mounting nuts.
- Bonding stud provided on door and grounding stud installed in enclosure.
- No pre-drilled wall-mounting holes to allow for flexible mounting alternatives.
 - May be installed with standoffs (sold separately) to allow for cleaning of back of enclosure, or welded in place.

Listings

- UL 508A Type 3R, 4, 4X, and 12 [File E65324]
- CSA Type 3R, 4, 4X, and 12 [File LR21001]
- NSF-ANSI 169 (not all accessories maintain NSF standards)
- Complies with:
 - NEMA Type 3R, 4, 4X, and 12
 - IEC 60529, IP69, IP69K



IP69K Sanitary Screw Cover			
Part Number	Price	Enclosure Size HxWxD	Drawing Link
HYJ854SS	\$707.00	7.94 x 4.98 x 4.53 [202 x 126 x 115]	PDF
HYJ1074SS	\$783.00	9.94 x 6.98 x 4.53 [252 x 177 x 115]	PDF
HYJ1294SS	\$859.00	11.94 x 8.98 x 4.53 [303 x 228 x 115]	PDF
HYJ14116SS	\$1,028.00	14.15 x 11.19 x 6.53 [359 x 284 x 166]	PDF
HYJ16138SS	\$1,202.00	16.36 x 13.40 x 8.53 [416 x 340 x 217]	PDF
Note: Dimensions in inches [millimeters].			

IP69K Sanitary Pushbutton



Applications

Designed to accept pushbuttons and indicators while protecting against harsh, sanitary environments.

Construction

- Formed 304 gauge steel.
- Sloped 3° on all four sides to prevent water from resting on top regardless of orientation.
- Smooth continuously welded seams.
- Hex head screw cover can be completely removed for modifications.
- Silicone gasket mounted around entire door edge and hex-head screws allow for efficient cleaning in sanitary environments.
- Gasket can be easily removed and re-installed for cleaning or replacement.
- Additional silicone gaskets can be ordered separately.
- Multiple pushbutton hole configurations with either 22 mm [0.87in] or 30 mm [1.18in] notched pushbutton holes.
- No pre-drilled wall mounting holes allow for flexible mounting alternatives.
- May be installed with standoffs (sold separately) to allow for cleaning of back of enclosure, or welded in place.
- Bonding stud provided on cover and grounding stud installed in enclosure.

Finish

- Cover and enclosure are natural stainless steel with a smooth #4 dairy finish.

Listings

- UL 508A Type 3R, 12, 4, 4X [UL File E65324]
- CSA Type 3R, 12, 4, 4X [CSA File LR21001]
- Complies with:
 - NEMA Type 3R, 12, 4, 4X
 - IEC 60529, IP69, IP69K



IP69K Sanitary Pushbutton								
22 mm	Price	30 mm	Price	Dimensions HxWxD	Drawing Link	# Holes	Replacement Gasket	Price
HYMPB1SS	\$934.00	HYPB1SS	\$934.00	7.94 x 4.98 x 4.53 [202 x 126 x 115]	PDF	1	HYG85	\$130.00
HYMPB2SS	\$982.00	HYPB2SS	\$982.00	7.94 x 4.98 x 4.53 [202 x 126 x 115]	PDF	2	HYG85	\$130.00
HYMPB3SS	\$1,036.00	HYPB3SS	\$1,036.00	9.94 x 4.98 x 4.53 [252 x 126 x 115]	PDF	3	HYG105	\$125.00
HYMPB4VSS	\$1,122.00	HYPB4VSS	\$1,122.00	11.94 x 4.98 x 4.53 [303 x 126 x 115]	PDF	4	HYG125	\$151.00
HYMPB4SS	\$1,175.00	HYPB4SS	\$1,175.00	9.94 x 6.98 x 4.53 [252 x 177 x 115]	PDF	4	HYG107	\$133.00
HYMPB6SS	\$1,368.00	HYPB6SS	\$1,368.00	11.94 x 8.98 x 4.53 [303 x 228 x 115]	PDF	6	HYG129	\$161.00

Note: Dimensions in inches [millimeters].

IP69K Sanitary Pushbutton



Dimensions

