



# Pneumatic GVP Series Miniature Solenoid Valves



**Part No. GVP-211C-12D**



**Part No. GVP-321C-12D**

NITRA™ pneumatic miniature solenoid valves are an excellent choice for many automation applications with low flow requirements. Valves must be mounted to a GM-3 series manifold (sold separately).

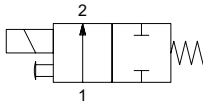
## Features

- 10mm and 15mm valve widths
- Available in 2-way or 3-way normally closed configurations
- 12 or 24 VDC solenoids
- GM-3 series manifolds sold separately



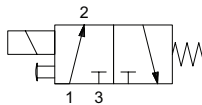
See [www.AutomationDirect.com](http://www.AutomationDirect.com) for a wide variety of fitting options

Diagram "A"



2-way, 2-position, Spring Return

Diagram "B"



3-way, 2-position, Spring Return

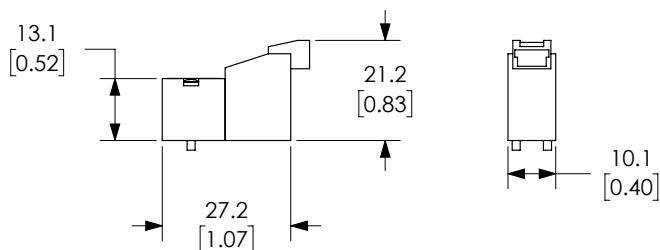
GVP Series Miniature Solenoid Valves							
Models	<a href="#"><u>GVP-211C-12D</u></a>	<a href="#"><u>GVP-211C-24D</u></a>	<a href="#"><u>GVP-311C-12D</u></a>	<a href="#"><u>GVP-311C-24D</u></a>	<a href="#"><u>GVP-221C-12D</u></a>	<a href="#"><u>GVP-321C-12D</u></a>	<a href="#"><u>GVP-321C-24D</u></a>
Price	\$43.00	\$43.00	\$43.00	\$43.00	\$37.50	\$37.50	\$37.50
Weight (lbs)	0.05				0.1		
Size	10mm				15mm		
Valve Type	2-way, 2-position, Normally Closed		3-way, 2-position, Normally Closed		2-way, 2-position, Normally Closed	3-way, 2-position, Normally Closed	
Acting	Single solenoid spring return poppet						
Diagram	A		B		A	B	
Fluid	Air or Inert Gas (to be filtered by 40μ filter element)						
Min. / Max. Pressure	0 to 105 psi (0 to 7.24 bar)						
Flow (Cv)	0.013	0.013	0.013	0.013	0.047	0.047	0.047
Port	Requires GM type 10mm or 15mm manifolds for operation						
Voltage	12VDC	24VDC	12VDC	24VDC	12VDC	12VDC	24VDC
Continuous ON Power	1.3 W				2.3 W		
Expected Life	50,000,000 cycles at max 3 cycles/second						
Wiring	Connector Receptacle (Wire connector required)				18" Flying Leads		
Response Time	6ms (on), 8ms (off)						
Indication	LED				No LED		
Temperature - Operation and Storage	14~122°F (-10~50°C)						
Lubrication	Not Required						
Body	Glass-filled nylon						
Protection	n/a						



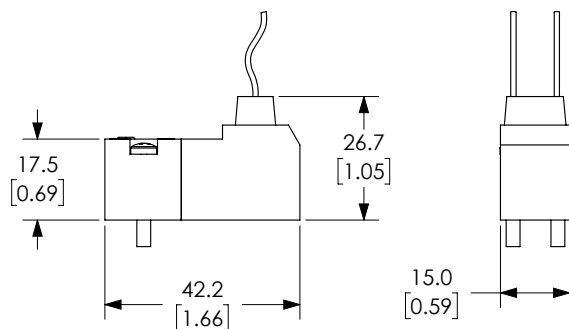
# Pneumatic GVP Series Miniature Solenoid Valves

## Dimensions

mm [inches]



**GVP-x11C-xxD**



**GVP-x21C-xxD**

See our website [www.AutomationDirect.com](http://www.AutomationDirect.com) for complete Engineering drawings.







# Pneumatic GVP Series Miniature Solenoid Valve Manifolds



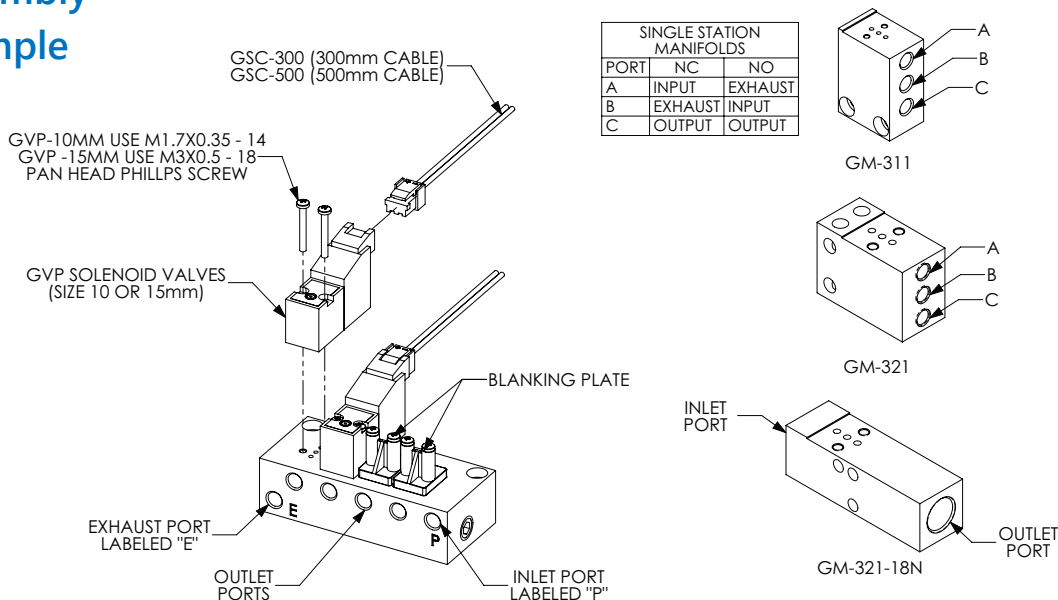
NITRA manifolds designed to work with 10mm wide GVP series valves.

- Single to 6 stations
- #10-32 female threaded ports
- Precision machined
- Compact
- Anodized aluminum for corrosion resistance
- Made in USA



Nitra Pneumatic GVP Series 10mm Miniature Solenoid Valve Manifolds					
Item	Part No.	Description	A inches [mm]	Price	Weight (lbs)
	<a href="#"><u>GM-311</u></a>	NITRA pneumatic valve manifold, anodized aluminum, white, rectangular, (1) station, #10-32 female UNF inlet(s), #10-32 female UNF outlet(s), #10-32 female threaded exhaust(s). For use with GVP-21 and GVP-31 series solenoid valves.	N/A	\$25.50	0.05
	<a href="#"><u>GM-312</u></a>	NITRA pneumatic valve manifold, anodized aluminum, white, rectangular, (2) stations, #10-32 female UNF inlet(s), #10-32 female UNF outlet(s), #10-32 female threaded exhaust(s). For use with GVP-21 and GVP-31 series solenoid valves.	1.42 [36.1]	\$35.50	0.05
	<a href="#"><u>GM-314</u></a>	NITRA pneumatic valve manifold, anodized aluminum, white, rectangular, (4) stations, #10-32 female UNF inlet(s), #10-32 female UNF outlet(s), #10-32 female threaded exhaust(s). For use with GVP-21 and GVP-31 series solenoid valves.	2.25 [78.2]	\$40.00	0.10
	<a href="#"><u>GM-316</u></a>	NITRA pneumatic valve manifold, anodized aluminum, white, rectangular, (6) stations, #10-32 female UNF inlet(s), #10-32 female UNF outlet(s), #10-32 female threaded exhaust(s). For use with GVP-21 and GVP-31 series solenoid valves.	3.08 [78.2]	\$47.00	0.15

## Assembly Example









# Pneumatic GVP Series Miniature Solenoid Valve Manifolds



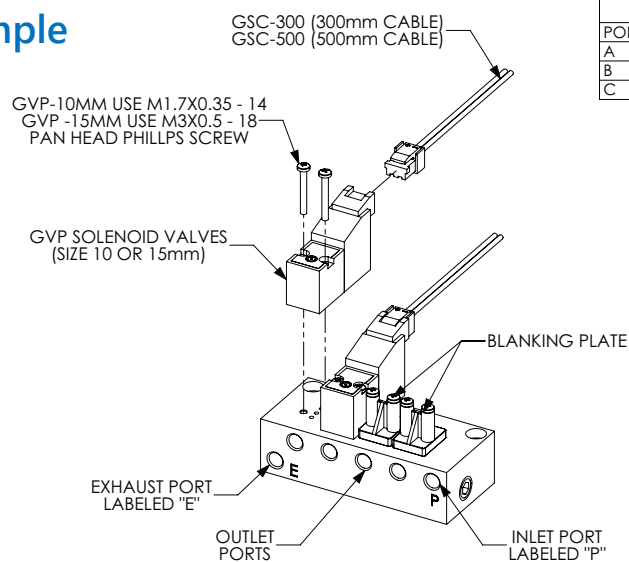
NITRA manifolds designed to work with 15mm wide GVP series valves.

- Single to 4 stations
- #10-32 threaded or 1/8in NPT female ports
- Precision machined
- Compact
- Anodized aluminum for corrosion resistance
- Made in USA

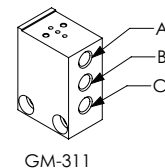


Nitra Pneumatic GVP Series 15mm Miniature Solenoid Valve Manifolds					
Item	Part No.	Description	A inches [mm]	Price	Weight (lbs)
	<a href="#"><u>GM-321</u></a>	NITRA pneumatic valve manifold, anodized aluminum, white, rectangular, (1) station, #10-32 female UNF inlet(s), #10-32 female UNF outlet(s), #10-32 female threaded exhaust(s). For use with GVP-22 and GVP-32 series solenoid valves.	N/A	\$25.50	0.05
	<a href="#"><u>GM-322</u></a>	NITRA pneumatic valve manifold, anodized aluminum, white, rectangular, (2) stations, 1/8in female NPT inlet(s), #10-32 female UNF outlet(s), 1/8in female NPT exhaust(s). For use with GVP-22 and GVP-32 series solenoid valves.	2.13 [54.0]	\$32.50	0.15
	<a href="#"><u>GM-324</u></a>	NITRA pneumatic valve manifold, anodized aluminum, white, rectangular, (4) stations, 1/8in female NPT inlet(s), #10-32 female threaded outlet(s), 1/8in female NPT exhaust(s). For use with GVP-22 and GVP-32 series solenoid valves.	3.37 [85.7]	\$44.50	0.25
	<a href="#"><u>GM-321-18N</u></a>	NITRA pneumatic valve manifold, anodized aluminum, black, rectangular, (1) station, 1/8in female NPT inlet(s), 1/8in female NPT outlet(s), vent hole exhaust(s). For use with GVP-22 and GVP-32 series solenoid valves.	N/A	\$31.00	0.6

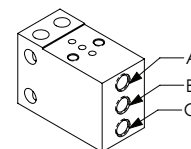
## Assembly Example



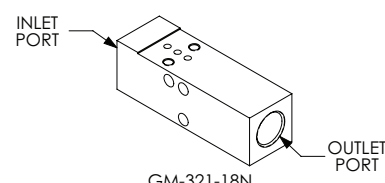
SINGLE STATION MANIFOLDS		
PORT	NC	NO
A	INPUT	EXHAUST
B	EXHAUST	INPUT
C	OUTPUT	OUTPUT



GM-311



GM-321



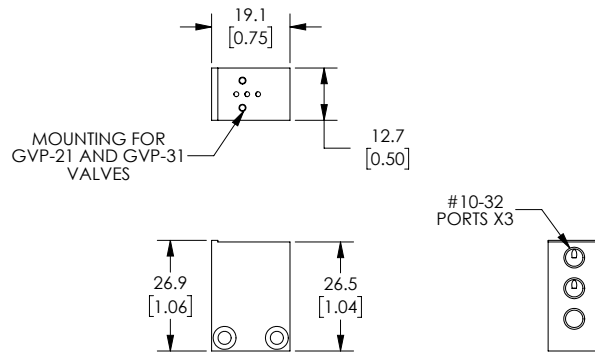
GM-321-18N



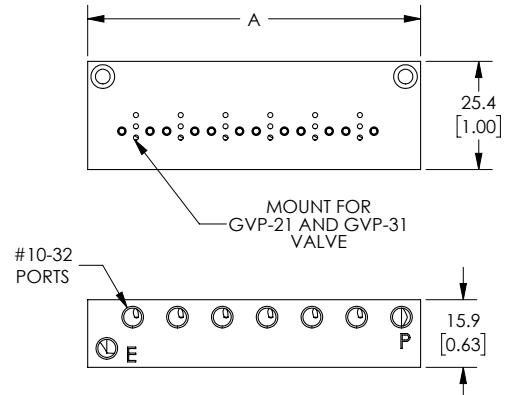
# Pneumatic GVP Series Miniature Solenoid Valve Manifolds

## Dimensions

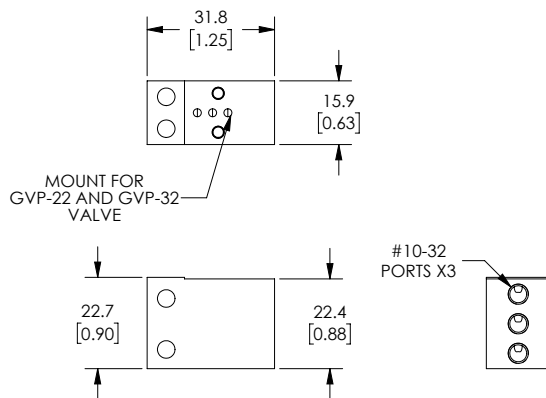
mm [inches]



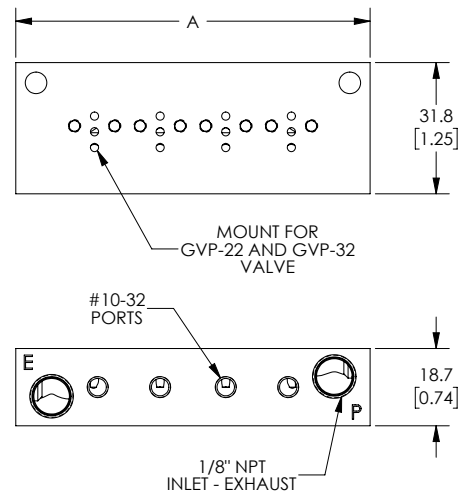
Part No. GM-311



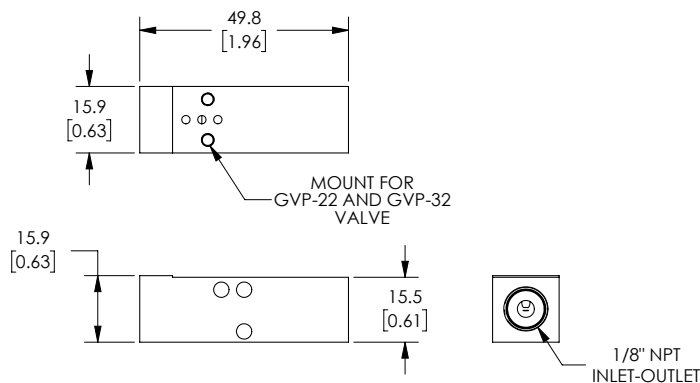
Part No. GM-312, GM-314, GM-316



Part No. GM-321



Part No. GM-322, GM-324







Part No. GM-321-18N

See our website [www.AutomationDirect.com](http://www.AutomationDirect.com) for complete Engineering drawings.



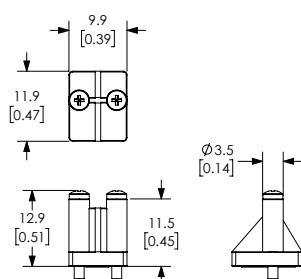
# Pneumatic GVP Series Miniature Solenoid Manifold Accessories



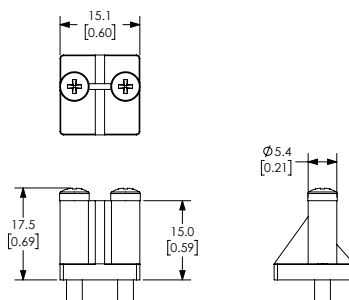
Nitra Pneumatic GVP Series Miniature Solenoid Valve Manifold Accessories				
Item	Part No.	Description	Price	Weight (lbs)
	<a href="#"><u>GM-31BP</u></a>	NITRA blanking plate, nylon. For use with GM-31 series manifolds. Gasket and mounting screws included.	\$6.25	0.05
	<a href="#"><u>GM-32BP</u></a>	NITRA blanking plate, nylon. For use with GM-32 series manifolds. Gasket and mounting screws included.	\$6.00	0.05
	<a href="#"><u>GSC-300</u></a>	NITRA solenoid valve cable, miniature pin plug to pigtail, 11.8in/300mm cable length. For use with GVP series solenoid valves.	\$6.00	0.05
	<a href="#"><u>GSC-500</u></a>	NITRA solenoid valve cable, miniature pin plug to pigtail, 19.6in/500mm cable length. For use with GVP series solenoid valves.	\$6.25	0.05

## Dimensions

mm [inches]



Part No. [GM-31BP](#)



Part No. [GM-32BP](#)

See our website [www.AutomationDirect.com](http://www.AutomationDirect.com) for complete Engineering drawings.