

# GS1,GS2,GS3/DURAPULSE Accessories – Ethernet Interface



Note: GS1, GS2, GS3, & GS4 AC Drives only

## GS-EDRV100 Overview

The GS-EDRV100 Ethernet interface provides a high-performance Ethernet link between a control system for legacy GS1, GS2, GS3, or GS4 drives. The module will also work with GS20 drives that are running in GS2 mode. The GS-EDRV100 processes signals to and from the drive, mounts on 35mm DIN rail, and connects the drive to an Ethernet hub or PC. It formats drive signals to conform with the Ethernet standard and transmits these signals to the H2-ERM or H4-ERM, Productivity3000, or independent controller with a Modbus TCP/IP driver. This allows for greater connectivity to many control system architectures.

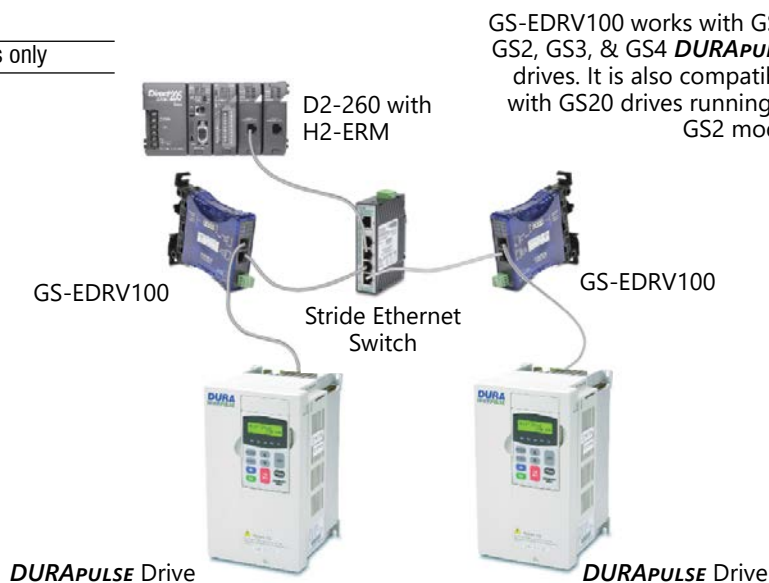
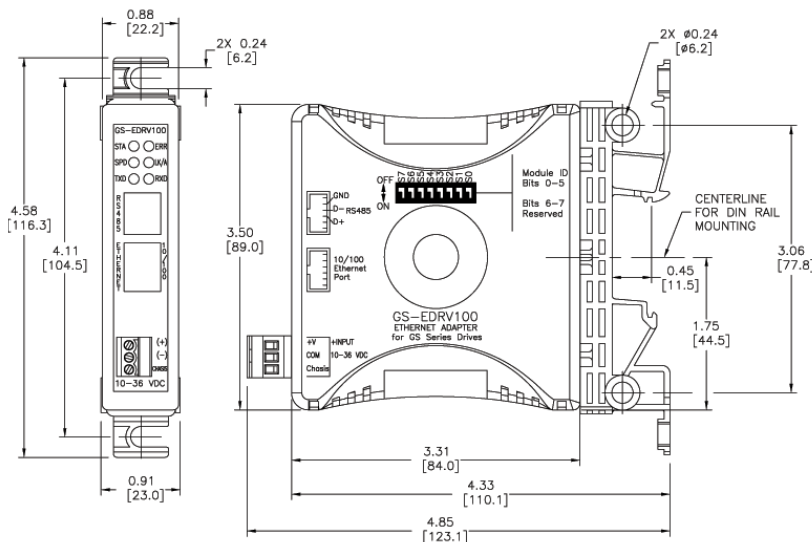
An additional feature is the built-in Web server which allows users to configure and control the drive from any Web browser via the IP address of the GS-EDRV100 card.

**Note:** The GS-EDRV100 requires an external 24 VDC power supply.

## Automatic power shut-down

The GS series drives have a provision for shutting down control or power to the inverter in the event of a communications time-out. This function can be set up through the drive's parameter group 9.

### Dimensions: inches[mm]



GS-EDRV100 works with GS1, GS2, GS3, & GS4 **DURAPULSE** drives. It is also compatible with GS20 drives running in GS2 mode.

**LED Indicators**  
 STA - Status  
 SPD - 100Mbps  
 TXD - Transmit  
 ERR - Module Error  
 LK/A - Link/Active  
 RXD - Receive

**DIP Switches**  
(under cover)

**Serial Port**

**Ethernet Port**

**Power Terminals**  
(Class 2 power recommended)

Positive connection (+) or +10–36VDC

Negative connection (-) or 0VDC

Chassis or system ground connection



## GS-EDRV100 Specifications

Part Number	GS-EDRV100
Price	\$261.00
Approvals	cUL Listed, file number E185989
Input Voltage	10–36 VDC
Input Current	50–220 mA
<b>NOTE:</b> Can be used with GS1, GS2, GS3, & GS4 series AC drives (also compatible with GS20 but only when in GS2 mode). <b>NOTE:</b> Package includes 2-ft. serial communications cable. <b>NOTE:</b> Mounts on 35mm DIN rail.	