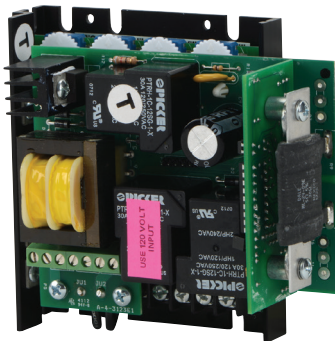


# GSD7 Series DC Drives

## GSD7 Introduction



GSD7-xxx-xCR3



GSD7-xxx-xCR30

### GSD7 Series DC Drives

Motor Rating Range @ 120 VAC <sub>IN</sub>	1/50 – 1 hp
Motor Rating Range @ 240 VAC <sub>IN</sub>	1/25 – 2 hp

## Overview

Instant reversing, quick stopping, rapid cycling... The IronHorse GSD7 series DC drives outperform other dynamic braking and reversing drives by utilizing unique zero-speed detect and dynamic braking circuits.

These circuits eliminate the contact arcing and failed braking problems associated with other reversing and dynamic braking drives. The GSD7 zero-speed detect circuit also eliminates motor plug reversing problems.

In the event of a power loss or emergency stop condition, the GSD7 Series DC drives will drop into a dynamic brake condition to safely and quickly bring the motor to a stop.

## Features

- Adjustable horsepower settings
- Barrier terminal blocks
- Full-wave bridge supply
- Adjustable minimum speed
- Adjustable maximum speed
- Adjustable IR compensation
- Adjustable current limit
- Fixed acceleration (0.5 sec)
- Line voltage compensation
- 5kΩ pot with leads, dial, and knob included
- 50:1 speed range
- Overload capacity: 200% for one minute
- Transient voltage protection
- Shunt field supply provided
- Onboard dynamic brake resistor
- Automatic dynamic braking on power loss
- 1% speed regulation with armature voltage feedback

## Accessories

- Replacement speed potentiometer kit
- Digital potentiometer

*Detailed descriptions and specifications for GSD accessories are available in the "GSD Series DC Drives Accessories" section.*

## Typical Applications

- Auger feeders
- Automated door actuators
- Commercial cooking equipment
- Commercial lift
- Food production
- Industrial pumping systems
- Measurement instruments
- Miniature lathes and mills
- Packaging / material-handling equipment
- PLC-controlled reversing
- Printing and labeling machines
- Small shop machine tools
- Spray / print reciprocating head

# GSD7 Series DC Drives

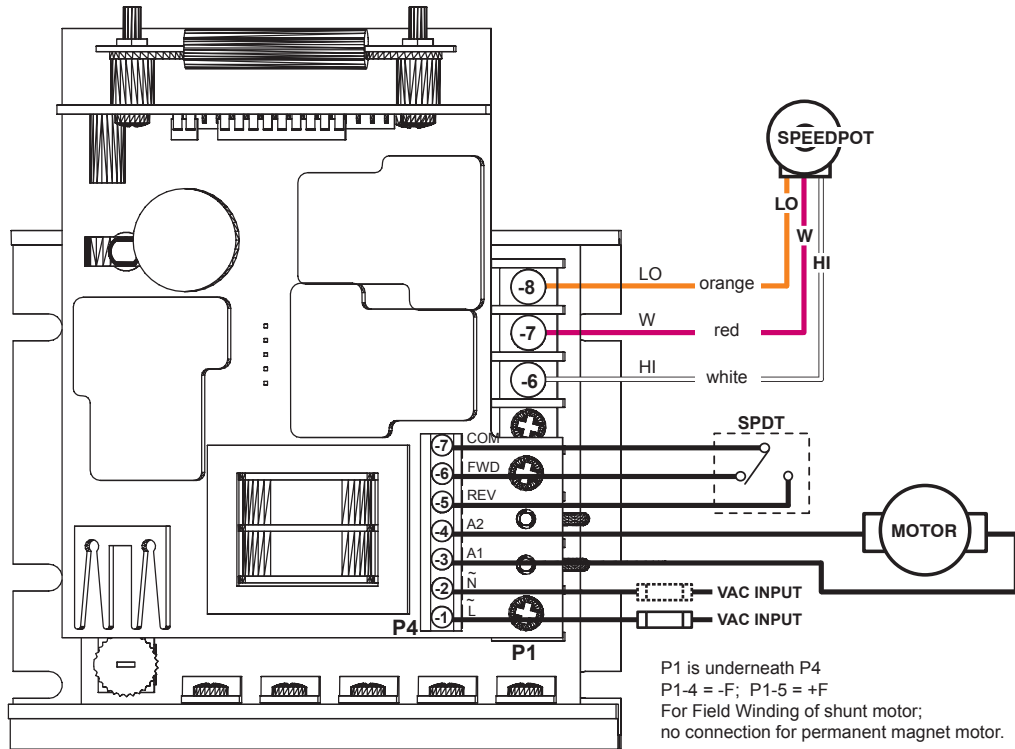
## GSD7 Selection and Specifications

GSD7 Series DC Drives – Selection & Specifications							
Model	GSD7-120-1CR3	GSD7-120-1CR30	GSD7-120-5CR3	GSD7-120-10CR30	GSD7-240-1CR3	GSD7-240-5CR3	GSD7-240-10CR30
Price	\$264.00	\$318.00	\$264.00	\$320.00	\$288.00	\$287.00	\$323.00
Package Configuration	Open frame						
Power Quality Form Factor	1.4						
Input Voltage (@50/60Hz)	120 VAC ±10%				240 VAC ±10%		
Output Voltage	0–90 VDC				0–180 VDC		
Shunt Field Voltage	100 VDC (1A max)				200 VDC (1A max)		
Motor Rating (hp)	1/15 – 1/8	1/8 – 1/2	1/8 – 1	1/25 – 1/4	1/4 – 1	1/4 – 2	
Output Current (continuous)	500mA–1.2A (DC)	500mA–5.5A (DC)	500mA–10A (DC)	500mA–1.2A (DC)	500mA–5.5A (DC)	500mA–10A (DC)	
Current Overload Capacity	200% for 60s						
Current Limit (adjustable)	0.3–3A (DC)	1–18A (DC)		0.3–3A (DC)	1–18A (DC)		
Cycling Rate (cycles/min)	3	30	3	30	3	3	30
Transient Protection	Metal Oxide Varistor (MOV)						
I.R. Compensation	Adjustable						
Speed Adjustment	5kΩ 0.5W potentiometer or 0–10VDC isolated input signal						
Speed Range	50:1						
Speed Regulation	±1% of base speed						
Maximum Speed	Adjustable from 60% to 110% of base speed						
Minimum Speed	Linear ramp 0–30% of adjustable maximum speed						
Acceleration	0.5s fixed						
Deceleration	0.5s fixed						
Dynamic Braking	Yes						
Plugging Capability **	Yes						
Electrical Connections	Barrier-type terminal blocks; 22–14 AWG						
External Fusing Required	Bussman ABC or Littelfuse 314 series ceramic fuses or equivalent Refer to "Installation and Wiring" section of user manual for details						
Operating Temperature	-10 to 45 °C [14 to 113 °F]						
Thermal Protection	Current limiting						
Mounting Orientation	Can be mounted in any orientation						
Corrosive Gases	NOT compatible with any corrosive gases						
Weight	1.1 lb [490g]	3.3 lb [1497g]	1.1 lb [490g]	3.3 lb [1497g]	1.1 lb [490g]	1.1 lb [490g]	3.3 lb [1497g]
Agency Approvals	cUL <sub>US</sub> (E333109), RoHS						
<b>Optional Accessories*</b>							
Replacement Potentiometer	GSDA-5K						
Digital Potentiometer	GSDA-DP						
<p>* For accessories details, refer to the "GSD Series DC Drives Accessories" section.</p> <p>** Plugging is a method of rapidly changing motor direction by reversing motor armature polarity, while the motor is still running.</p>							

# GSD7 Series DC Drives

## GSD7 Wiring Diagrams

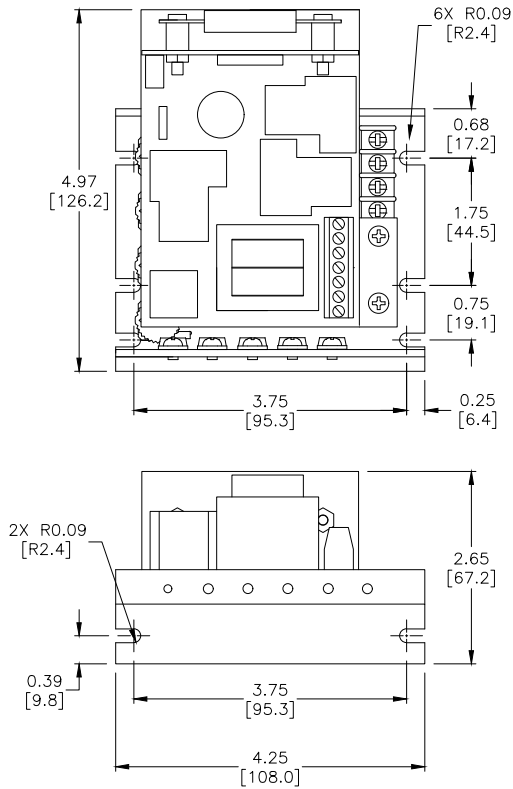
**GSD7-xxx-xxxxx Basic Wiring Diagram** – (refer to User Manual for more detailed wiring information)



# GSD7 Series DC Drives

GSD7 Dimensions – dimensions = in [mm]

**GSD7-xxx-xCR3 Dimensions**



**GSD7-xxx-xCR30 Dimensions**

