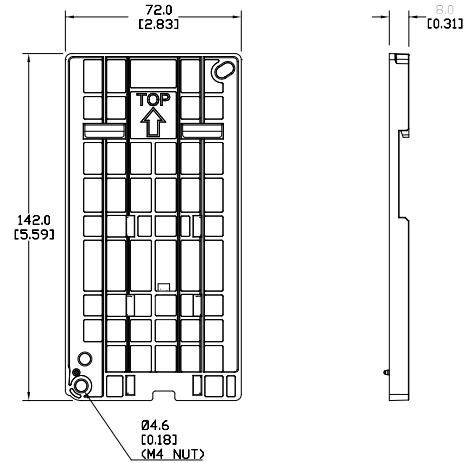


# DuraPulse Optional Accessories – Mounting Kits

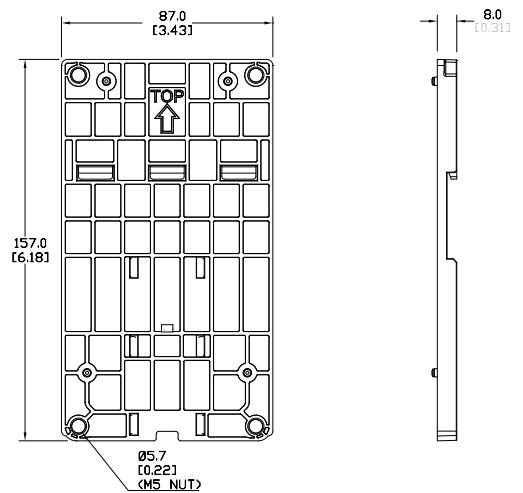
## DIN Rail Mounting

Frame A, B, and C GS10, GS20, and GS30 drives can be DIN rail mounted using a DIN rail mounting kit. One kit is used for A and B frame drives, while a second kit is used for C frame drives. Please see the GSxx series User Manual for additional information and installation instructions.

GSxx DIN Rail Mounting Compatibility					
Drive Model			Frame	DIN Rail Kit	Price
GS10 Series	GS20 Series	GS30 Series			
<a href="#">GS11N-10P2</a>	<a href="#">GS21-10P2</a>	–	A1	GS20A-DR-AB	\$5.25
<a href="#">GS11N-20P2</a>	<a href="#">GS21-20P2</a>	–	A1		
<a href="#">GS13N-20P2</a>	<a href="#">GS23-20P2</a>	–	A1		
<a href="#">GS13N-20P5</a>	<a href="#">GS23-20P5</a>	<a href="#">GS31-20P5</a>	A2		
–	–	<a href="#">GS33-20P5</a>	A2		
–	–	<a href="#">GS33-40P5</a>	A2		
<a href="#">GS11N-10P5</a>	<a href="#">GS21-10P5</a>	<a href="#">GS33-21P0</a>	A3		
<a href="#">GS11N-20P5</a>	<a href="#">GS21-20P5</a>	<a href="#">GS33-41P0</a>	A3		
<a href="#">GS13N-40P5</a>	<a href="#">GS23-40P5</a>	–	A4		
<a href="#">GS13N-21P0</a>	<a href="#">GS23-21P0</a>	–	A5		
–	<a href="#">GS23-41P0</a>	–	A5		
–	<a href="#">GS23-51P0</a>	–	A5		
<a href="#">GS13N-41P0</a>	–	–	A6		
<a href="#">GS13N-22P0</a>	<a href="#">GS23-22P0</a>	<a href="#">GS33-22P0</a>	B1		
<a href="#">GS13N-42P0</a>	<a href="#">GS23-42P0</a>	<a href="#">GS33-42P0</a>	B1		
–	<a href="#">GS23-52P0</a>	–	B1		
<a href="#">GS11N-21P0</a>	<a href="#">GS21-21P0</a>	<a href="#">GS31-21P0</a>	B2		
<a href="#">GS11N-22P0</a>	<a href="#">GS21-11P0</a>	<a href="#">GS31-22P0</a>	C1		
<a href="#">GS11N-23P0</a>	<a href="#">GS21-22P0</a>	<a href="#">GS33-23P0</a>	C1		
<a href="#">GS13N-23P0</a>	<a href="#">GS21-23P0</a>	<a href="#">GS33-25P0</a>	C1		
<a href="#">GS13N-25P0</a>	<a href="#">GS23-23P0</a>	<a href="#">GS33-43P0</a>	C1		
<a href="#">GS11N-11P0</a>	<a href="#">GS23-25P0</a>	<a href="#">GS33-45P0</a>	C1		
<a href="#">GS13N-43P0</a>	<a href="#">GS23-43P0</a>	–	C1		
<a href="#">GS13N-45P0</a>	<a href="#">GS23-45P0</a>	–	C1		
–	<a href="#">GS23-53P0</a>	–	C1		
–	<a href="#">GS23-55P0</a>	–	C1		



**GS20A-DR-AB**



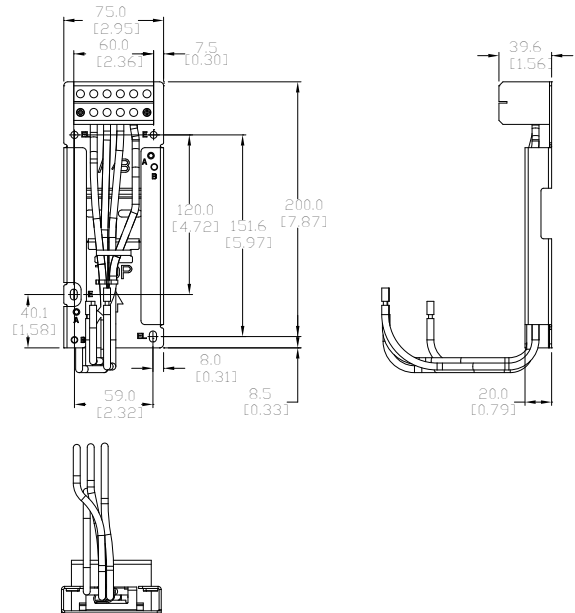
**GS20A-DR-C**

# DuraPulse Optional Accessories – Mounting Kits

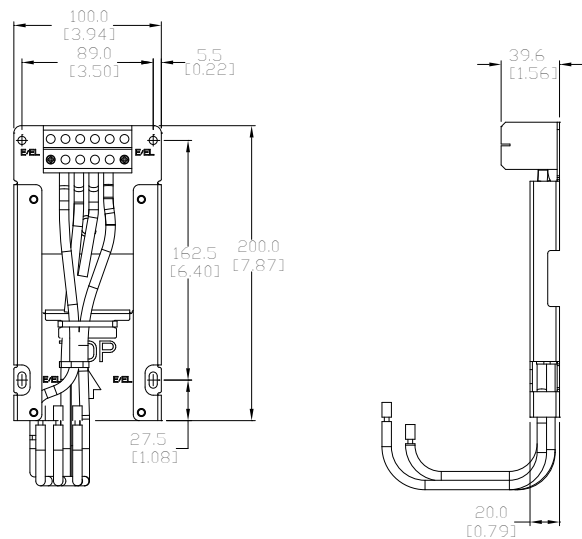
## Mounting Adapter Plate

The mounting adapter plate can be used to change the wiring orientation for the GS10, GS20, and GS30 series and provides flexibility for installation. This accessory changes the wiring method from the “bottom-mains input/ bottom-motor output” to the “top-mains input/bottom-motor output” for GS10/GS20/GS30. Use the table below to select the correct mounting plate for your drive. Please see your GSxx series User Manual for additional information and installation instructions.

GSxx Mounting Adapter Compatibility					
Drive Model			Frame	Mounting Plate	Price
GS10 Series	GS20 Series	GS30 Series			
<a href="#">GS11N-10P2</a>	<a href="#">GS21-10P2</a>	-	A1	GS20A-MP-AB	\$46.00
<a href="#">GS11N-20P2</a>	<a href="#">GS21-20P2</a>	-	A1		
<a href="#">GS13N-20P2</a>	<a href="#">GS23-20P2</a>	-	A1		
<a href="#">GS13N-20P5</a>	<a href="#">GS23-20P5</a>	<a href="#">GS31-20P5</a>	A2		
-	-	<a href="#">GS33-20P5</a>	A2		
-	-	<a href="#">GS33-40P5</a>	A2		
<a href="#">GS11N-10P5</a>	<a href="#">GS21-10P5</a>	<a href="#">GS33-21P0</a>	A3		
<a href="#">GS11N-20P5</a>	<a href="#">GS21-20P5</a>	<a href="#">GS33-41P0</a>	A3		
<a href="#">GS13N-40P5</a>	<a href="#">GS23-40P5</a>	-	A4		
<a href="#">GS13N-21P0</a>	<a href="#">GS23-21P0</a>	-	A5		
-	<a href="#">GS23-41P0</a>	-	A5		
-	<a href="#">GS23-51P0</a>	-	A5		
<a href="#">GS13N-41P0</a>	-	-	A6		
<a href="#">GS13N-22P0</a>	<a href="#">GS23-22P0</a>	<a href="#">GS33-22P0</a>	B1		
<a href="#">GS13N-42P0</a>	<a href="#">GS23-42P0</a>	<a href="#">GS33-42P0</a>	B1		
-	<a href="#">GS23-52P0</a>	-	B1		
<a href="#">GS11N-21P0</a>	<a href="#">GS21-21P0</a>	<a href="#">GS31-21P0</a>	B2		
<a href="#">GS11N-22P0</a>	<a href="#">GS21-11P0</a>	<a href="#">GS31-22P0</a>	C1	GS20A-MP-C	\$54.00
<a href="#">GS11N-23P0</a>	<a href="#">GS21-22P0</a>	<a href="#">GS33-23P0</a>	C1		
<a href="#">GS13N-23P0</a>	<a href="#">GS21-23P0</a>	<a href="#">GS33-25P0</a>	C1		
<a href="#">GS13N-25P0</a>	<a href="#">GS23-23P0</a>	<a href="#">GS33-43P0</a>	C1		
<a href="#">GS11N-11P0</a>	<a href="#">GS23-25P0</a>	<a href="#">GS33-45P0</a>	C1		
<a href="#">GS13N-43P0</a>	<a href="#">GS23-43P0</a>	-	C1		
<a href="#">GS13N-45P0</a>	<a href="#">GS23-45P0</a>	-	C1		
-	<a href="#">GS23-53P0</a>	-	C1		
-	<a href="#">GS23-55P0</a>	-	C1		



GS20A-MP-AB



GS20A-MP-C