

FUSERBLOC UL 98 Fusible Disconnect Switches



To assemble a switch, please select:

Direct Operation



OR

External Operation



Switch Body

Direct Handle

Switch Body

Shaft

External Handle

| UL 98 Fusible Disconnect Switches | | | | | |
|-----------------------------------|---|------------------------|------------|-----------------|------------|
| Part Number | Description | Switch Body Rating (A) | Frame Size | Number of Poles | Price |
| 38612004 | Front or side operated UL 98 Class J fusible switch, 600VAC, 250VDC | 30 | 4 | 2 | \$111.00 |
| 38613004 | | | | 3 | \$140.00 |
| 38616004 | | | | 4 | \$167.00 |
| 38612005 | | 60 | | 2 | \$142.00 |
| 38613005 | | | | 3 | \$176.00 |
| 38616005 | | | | 4 | \$220.00 |
| 38612010 | | 100 | 5 | 2 | \$191.00 |
| 38613010 | | | | 3 | \$238.00 |
| 38616010 | | | | 4 | \$304.00 |
| 38612020 | | 200 | 6 | 2 | \$523.00 |
| 38613020 | | | | 3 | \$643.00 |
| 38616020 | | | | 4 | \$814.00 |
| 38513038 | | 400 | 7 | 3 | \$885.00 |
| 38503060 | | 600 | 8 | 3 | \$1,542.00 |

| Front Operation Handles | | | | | | | | |
|--------------------------|--|------------------------|------------|--------------|-------------|--------------|--------------|---------|
| Part Number | Description | Switch Body Rating (A) | Fits Frame | Handle Color | Handle Type | NEMA/UL Type | Test | Price |
| 36297910 | Direct mount handle | 30-400 | 4 - 7 | Black | - | - | - | \$27.00 |
| 38596011 | | 600 | 8 | Black | - | - | - | \$48.00 |
| 141F2111 | Front operation handle for UL 98 fusible disconnect switches | 30-60 | 4 | Black/Blue | S1 | 1, 3R, 12 | I - O | \$32.50 |
| 141G2111 | | | | Red/Yellow | | | | \$32.50 |
| 141D2111 | | | | Black/Blue | S1 | 4, 4X | I - O | \$41.00 |
| 141E2111 | | | | Red/Yellow | | | | \$41.00 |
| 141D2115 | | | | Black/Blue | S1 | 4, 4X | I - O - Test | \$44.00 |
| 141E2115 | | | | Red/Yellow | | | | \$44.00 |
| 142D2115 | | 100-200 | 5, 6 | Black/Blue | S2 | 4, 4X | I - O - Test | \$82.00 |
| 142E2115 | | | | Red/Yellow | | | | \$82.00 |
| 142F2111 | | 100-400 | 5, 6, 7 | Black/Blue | S2 | 1, 3R, 12 | I - O | \$47.00 |
| 142G2111 | | | | Red/Yellow | | | | \$47.00 |
| 142D2111 | | | | Black/Blue | S2 | 4, 4X | I - O | \$65.00 |
| 142E2111 | | | | Red/Yellow | | | | \$65.00 |
| 143F3111 | | 600 | 8 | Black/Blue | S3 | 1, 3R, 12 | I - O | \$62.00 |
| 143G3111 | | | | Red/Yellow | | | | \$62.00 |
| 143D3111 | | | | Black/Blue | S3 | 4, 4X | I - O | \$78.00 |
| 143E3111 | | | | Red/Yellow | | | | \$78.00 |
| 141D2911 | 30-60 | 4 | Black/Blue | S1 | 4, 4X | I - O | \$48.00 | |
| 141E2911 | | | Red/Yellow | | | | \$48.00 | |
| 142D2911 | 100-400 | 5, 6, 7 | Black/Blue | S2 | 4, 4X | I - O | \$82.00 | |
| 142E2911 | | | Red/Yellow | | | | \$82.00 | |
| 143D3911 | 600 | 8 | Black/Blue | S3 | 4, 4X | I - O | \$108.00 | |
| 143E3911 | | | Red/Yellow | | | | \$108.00 | |



Direct Handle
[36297910](#)



S1 Handle
[142F2111](#)



S2 Handle
[142G2111](#)



S3 Handle
[143D3111](#)

FUSERBLOC UL 98 Fusible Disconnect Switches



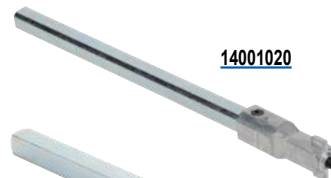
| Right Side Operation Handles (No door interlocking) | | | | | | | | |
|---|---|------------------------|------------|--------------|-------------|--------------|-------|----------|
| Part Number | Description | Switch Body Rating (A) | Fits Frame | Handle Color | Handle Type | NEMA/UL Type | Test | Price |
| 141H6111 | Side operation handle for UL 98 fusible disconnect switches | 30-60 | 4 | Black/Blue | S1 | 4, 4X | I - O | \$41.50 |
| 141I6111 | | | | Red/Yellow | | | | \$41.50 |
| 142H6111 | | 100-400 | 5, 6, 7 | Black/Blue | S2 | | | \$62.00 |
| 142I6111 | | | | Red/Yellow | | | | \$62.00 |
| 141H6911 | Heavy duty side operation handle for UL 98 fusible disconnect switches* | 30-60 | 4 | Black/Blue | S1 | | | \$83.00 |
| 141I6911 | | | | Red/Yellow | | | | \$83.00 |
| 142H6911 | | 100-400 | 5, 6, 7 | Black/Blue | S2 | | | \$103.00 |
| 142I6911 | | | | Red/Yellow | | | | \$103.00 |



[141H6111](#)

* Heavy duty handles have larger metal hasp to accommodate multiple locking devices.

| Shafts for External Handles | | | | | |
|-----------------------------|------------------------|-------------|--------|-----|---------|
| Part Number | Switch Body Rating (A) | Handle Type | Length | | Price |
| | | | in | mm | |
| 14001020 | 30-400 | S1, S2 | 7.9 | 200 | \$12.00 |
| 14001032 | | | 12.6 | 320 | \$13.00 |
| 14001040 | | | 15.7 | 400 | \$14.50 |
| 14001220 | 600 | S3 | 7.9 | 200 | \$15.50 |
| 14001232 | | | 12.6 | 320 | \$18.50 |
| 14001240 | | | 15.7 | 400 | \$21.00 |



[14001020](#)



[14001220](#)

| Shaft Guide for External Handle | | | |
|---------------------------------|---|------------------|--------|
| Part Number | Description | Fits Handle Type | Price |
| 14290000 | This accessory makes alignment connections between the shaft and handle easier. Allows up to 15mm misalignment tolerance. Required for a shaft length longer than 300mm. Included with longer shafts. | S1, S2, S3 | \$6.50 |



[14290000](#)

| Auxiliary Contacts | | | | |
|--------------------------|---|------------------------|-----------|---------|
| Part Number | Description | Body Switch Rating (A) | Contacts | Price |
| 39990701 | Front mount auxiliary contacts can be configured to be operated on standard and TEST position switches. Each slot can accommodate up to 2 interlocked auxiliary contacts. 3A @ 240VAC. For 30 to 200A/J, maximum of 4 auxiliary contacts | 30 - 600 | 1 NO | \$9.00 |
| 39990702 | | | 1 NC | \$9.00 |
| 3999U041 | Side operated auxiliary contacts for frame sizes 3 to 8 UL 98 fusible disconnect switches, position OFF and ON signalled by 1 to 4 NO + NC auxiliary contacts. 10A @ 600 VAC/DC. 2/pk | 30-200 | 1 NO | \$30.00 |
| 3999U042 | | | 1NO / 1NC | \$58.00 |



[39990701](#)

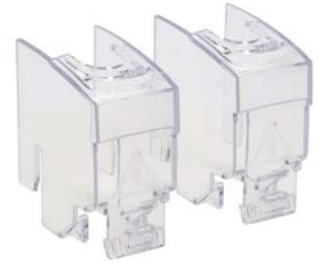


[3999U041](#)

FUSERBLOC UL 98 Fusible Disconnect Switches



| Terminal Shrouds | | | | |
|--------------------------|---|------------------------|--------|---------|
| Part Number | Description | Switch Body Rating (A) | Pcs/pk | Price |
| 38982020 | Line or load protection against direct contact with terminals or connection parts, 1 pole | 200 | 2 | \$18.00 |
| 38983020 | | 200 | 3 | \$26.00 |
| 38984020 | | 200 | 4 | \$33.00 |
| 38983040 | | 400 | 3 | \$32.50 |
| 38983080 | | 600 | 3 | \$58.00 |



[38982020](#)

| Terminal Lugs | | | | | |
|--------------------------|------------------------|-------------------|---------------|--------------|----------|
| Part Number | Switch Body Rating (A) | Wire Range | Wires per lug | Lugs per Kit | Price |
| 39542020 | 200 | #6 - 300MCM | 1 | 2 | \$17.50 |
| 39543020 | | | | 3 | \$26.00 |
| 39544020 | | | | 4 | \$33.50 |
| 39543040 | 400 | #2 - 600MCM | 1 | 3 | \$66.00 |
| 39543041 | | 2 x (#6 - 350MCM) | 2 | 3 | \$90.00 |
| 39543060 | 600 | 2 x (#2 - 600MCM) | 2 | 3 | \$136.00 |



[39542020](#)

Note: Accept either copper or aluminum wires

NFPA 79 Accessories

| Flange Handles | | | | | | |
|--------------------------|---|------------------------|--------------|---------------|---------------------|----------|
| Part Number | Description | Switch Body Rating (A) | Handle Color | Handle Type | NEMA/UL Type | Price |
| 37299002 | Flange handle, meets UL 508A and NFPA 79 requirements. The handle will operate the switch by cable. | 30-200 | Gray | Standard | 1, 3, 3R, 4, 12 | \$126.00 |
| 37299003 | | 30-200 | - | Chrome plated | 1, 3, 3R, 4, 4X, 12 | \$338.00 |

Requires flange handle, cable operator and cable.



[37299002](#)

[37299003](#)

| Cable Operator | | | |
|--------------------------|--|------------------------|----------|
| Part Number | Description | Switch Body Rating (A) | Price |
| 37299903 | Cable flange mechanism links to flange handle and side-operated switches. Must also order flange handle. | 30-200 | \$130.00 |

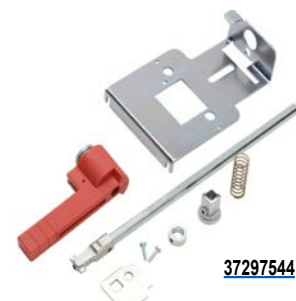
| Cables | | | |
|--------------------------|---------------------|------------------|----------|
| Part Number | Cable Length (feet) | Cable Length (m) | Price |
| 37299992 | 3 | 1 | \$152.00 |
| 37299993 | 5 | 1.5 | \$177.00 |



[37299992](#)

[37299903](#)

| NFPA 79 "Through the Door" Kit | | | | | |
|--------------------------------|---|---------------------|------------------------|-----------------|----------|
| Part Number | Description | Min Enclosure Depth | Switch Body Rating (A) | Fits Frame Size | Price |
| 37297540 | Meets both UL 508A and NFPA 79 requirements. Order an S-type external handle separately (not S0). | 11.14 in (238mm) | 30-200 | 3, 4, 5, 6 | \$57.00 |
| 37297544 | | 11.81 in (300mm) | 400 | 7 | \$82.00 |
| 37297552 | | 14.96 in (380mm) | 600 | 8 | \$172.00 |



[37297544](#)

FUSERBLOC UL 98 Fusible Disconnect Switches



Blown Fuse Monitors

These fuse monitors detect fuse opening using a bistable (latching) relay and a signaling LED. They can be mounted on a 35mm DIN rail, a back plate, next to the disconnect switch or on the door, or can be mounted directly on the side of Fuserbloc (3861xxx) series switches.

| Blown Fuse Monitors for UL 98 Fusible Disconnect Switches | | | | | | |
|---|-------|-----------|----------------------|-------------------|----------------|----------|
| Part Number | Model | # of LEDs | Auxiliary Contacts | Operating Voltage | Weight lb (kg) | Price |
| 38991120 | FMD10 | 1 | 1 NO / 1 NC | 120 - 260 VAC | 0.35 (0.16) | \$135.00 |
| 38991380 | | | | 380 - 690 VAC | | \$151.00 |
| 38993120 | FMD30 | 3 | 3A @ 230VAC/30VDC | 120 - 260 VAC | | \$174.00 |
| 38993380 | | | | 380 - 690 VAC | | \$191.00 |



[38991120](#)

[38993120](#)

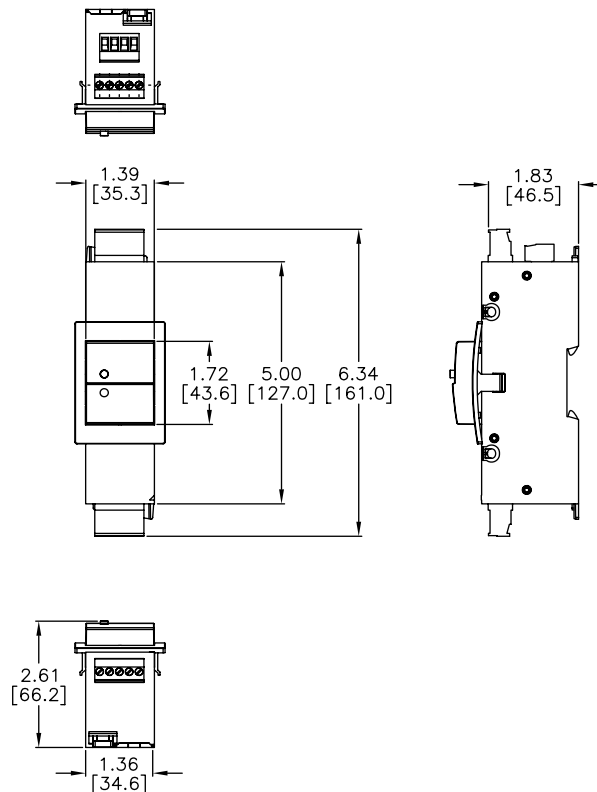
| Fuse Monitors Accessories | | | |
|---------------------------|--|--------------|---------|
| Part Number | Description | Mounting | Price |
| 38199120 | Blown fuse monitor connection hardware | Standard | \$31.00 |
| 38299120 | Blown fuse monitor door mounting and connection hardware | Door mounted | \$58.00 |



[38199120](#)

[38299120](#)

Dimensions [inches/mm]



Please see our website www.AutomationDirect.com for complete engineering drawings.

FUSERBLOC UL 98 Fusible Disconnect Switches



Technical Characteristics

| Characteristics According to UL 98 / CSA 22.2 #4 | | | | | | |
|---|---|---|---|---|-----------------|-----------------|
| | 38612004 38613004 38616004 | 38612005 38613005 38616005 | 38612010 38613010 38616010 | 38612020 38613020 38616020 | 38513038 | 38503060 |
| General use rating (A) | 30 | 60 | 100 | 200 | 400 | 600 |
| Short circuit rating at 600VAC (kA) | 200 | 100 | 200 | 200 | 200 | 200 |
| Type of fuse | J | J | J | J | J | J |
| Max. fuse rating (A) | 30 | 60 | 100 | 200 | 400 | 600 |
| Operational power (hp) / current max operation 3-phase (A) | | | | | | |
| 220-240 VAC | 7.5 / 22 | 15 / 42 | 30 / 80 | 60 / 154 | 125 / 312 | 200 / 480 |
| 440-480 VAC | 15 / 21 | 30 / 40 | 60 / 77 | 125 / 156 | 250 / 302 | 500 / 590 |
| 600VAC | 20 / 22 | 50 / 52 | 75 / 77 | 150 / 144 | 350 / 336 | 500 / 475 |
| 125VDC ¹ | 3 / 25 | 5 / 40 | 7.5 / 58 | 15 / 112 | 20 / 148 | – |
| 250VDC ² | 5 / 20 | 10 / 38 | 20 / 72 | 40 / 140 | 50 / 173 | – |
| Mechanical endurance | | | | | | |
| Endurance (number of operating cycles) | 10,000 | 10,000 | 10,000 | 8,000 | 6,000 | 5,000 |
| Operating torque (lb·in / N·m) | 4.1 | 8.7 | 9.7 | 10.2 | 17 | 66.2 |
| Wire type/temperature | Cu / 75°C (167°F) | | | Cu/Al / 75°C (167°F) | | |
| Product weight – lb (kg) | | | | | | |
| 2-pole | 3.0 (1.3) | 3.1 (1.4) | 4.07 (1.8) | 5.7 (2.6) | – | – |
| 3-pole | 3.8 (1.7) | 4.1 (1.8) | 5.3 (2.4) | 7.8 (3.5) | 16.6 (7.6) | 44.2 (20.1) |
| 4-pole | 4.7 (2.1) | 4.8 (2.2) | 6.49 (2.9) | 10.8 (4.9) | – | – |
| Wire range | | | | | | |
| Solid (AWG) | #14-10 | #14-10 | #12-10 | – | – | – |
| Torque – lb·in (N·m) | 27 (3.1) | 31 (3.5) | 35.4 (4) | – | – | – |
| Stranded (AWG) | #14-6 | #14-6 | #12-1 | #6-300MCM | #4-600MCM | (2) #2-600MCM |
| Torque – lb·in (N·m) | 31 (3.5) | 31 (3.5) | 35.4 (4) | 275 (31) | 550 (62) | 375 (42.4) |
| Stranded (AWG) | – | – | – | – | (2) 1/0-250MCM | – |
| Torque – lb·in (N·m) | – | – | – | – | 550 (62) | – |
| Environmental – switch body | | | | | | |
| Operating temperature ³ | -20°C to 70°C (-4°F to +158°F) | | | | | |
| Flammability rating | UL 94-V0 | | | | | |
| Mounting | 35mm DIN rail or panel mount | | | Panel mount | | |
| Agency Approvals | | | | | | |
| UL file # E201138 (UL 98), CSA file # 112964 (C22.2 No. 4) | | | | | | |

¹ 2 poles in series

² 3 poles in series

³ Temperatures above 40°C, the current rating of the switch has to be de-rated 1% per °C over 40°C. Example, at 60°C a 100A switch is rated 80A

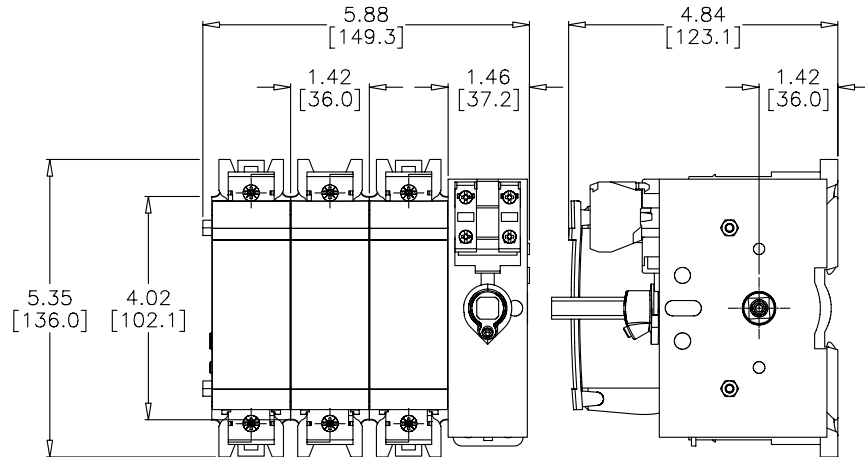
To obtain the most current agency approval information, see the Agency Approval Checklist section on the specific part number's web page.

FUSERBLOC UL 98 Fusible Disconnect Switches



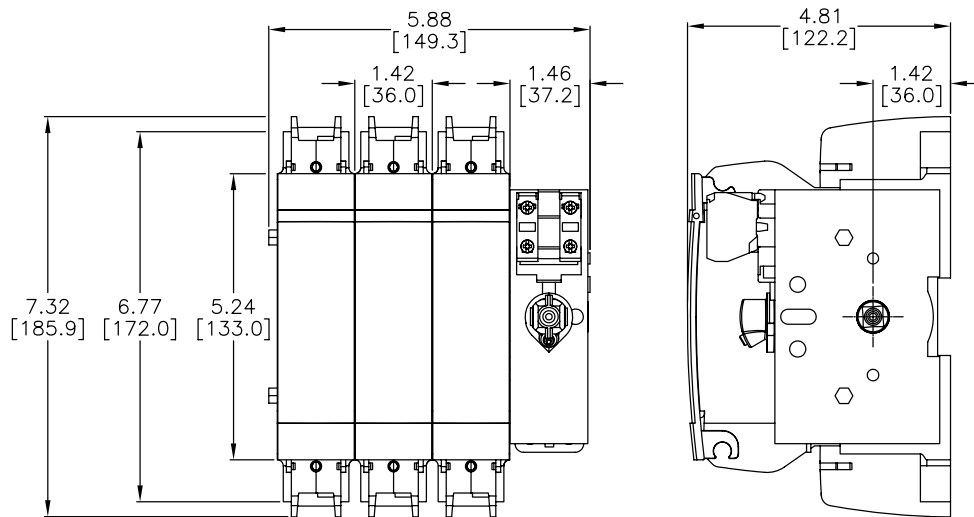
Dimensions [inches/mm]

30A to 60A - Frame Size 4



Note: For 2-pole decrease overall width by 36mm [1.42 in]. For 4-pole, increase overall width by 36mm [1.42 in].

100A - Frame Size 5



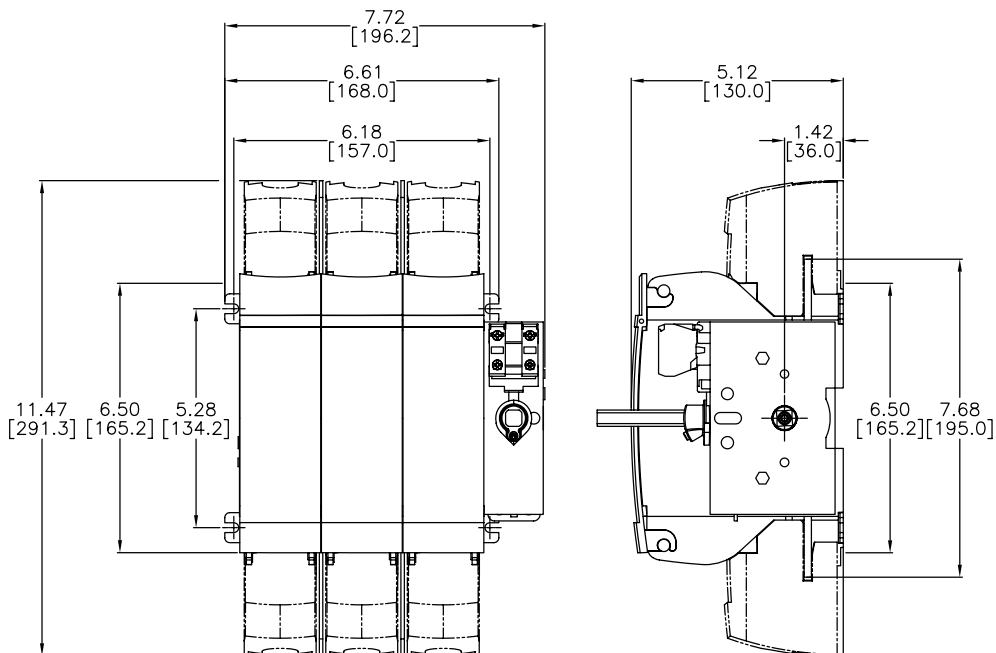
Please see our website www.AutomationDirect.com for complete engineering drawings.

FUSERBLOC UL 98 Fusible Disconnect Switches



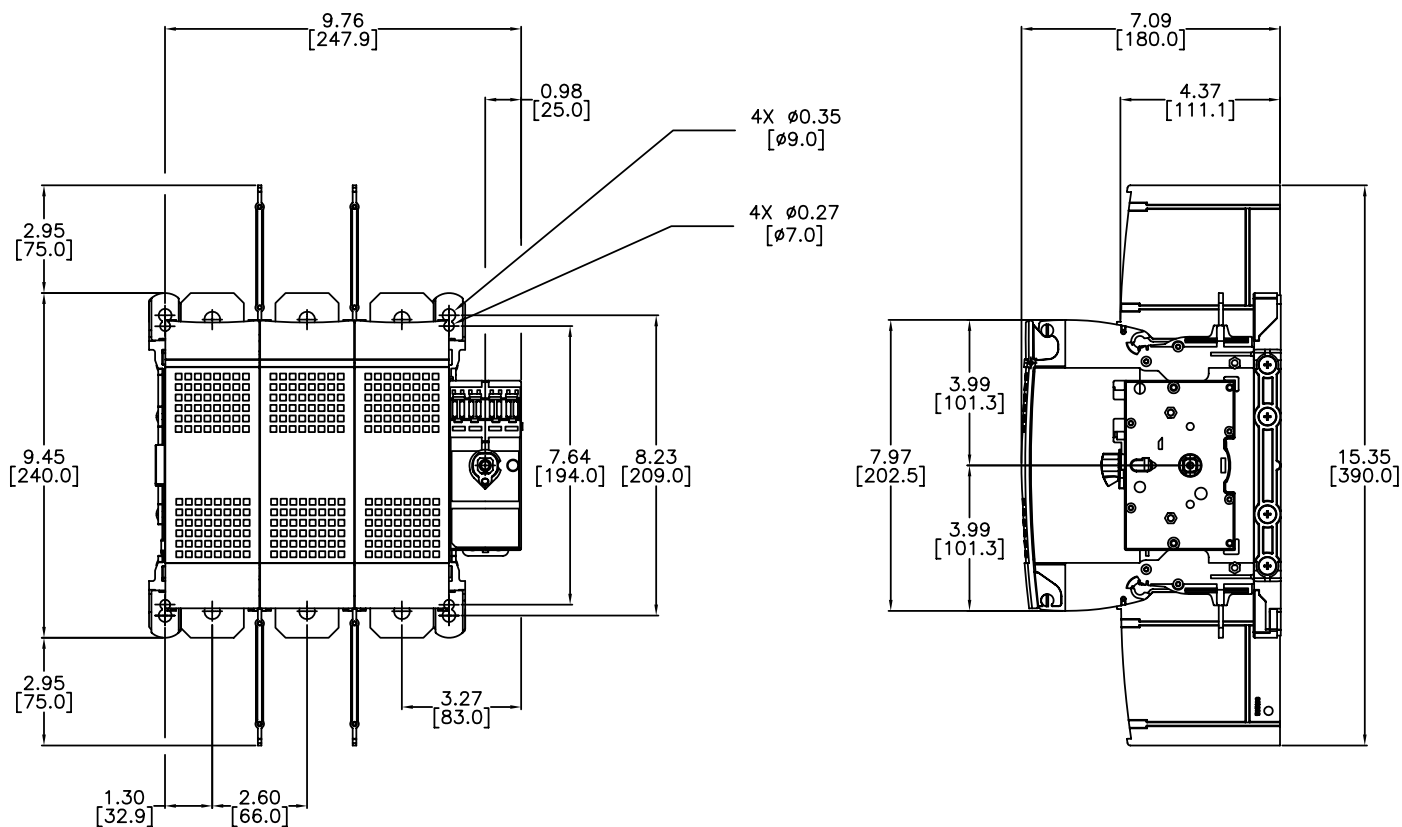
Dimensions [inches/mm]

200A - Frame Size 6



Note: For 2-pole decrease overall width by 36mm [1.42 in]. For 4-pole, increase overall width by 36mm [1.42 in].

400A - Frame Size 7



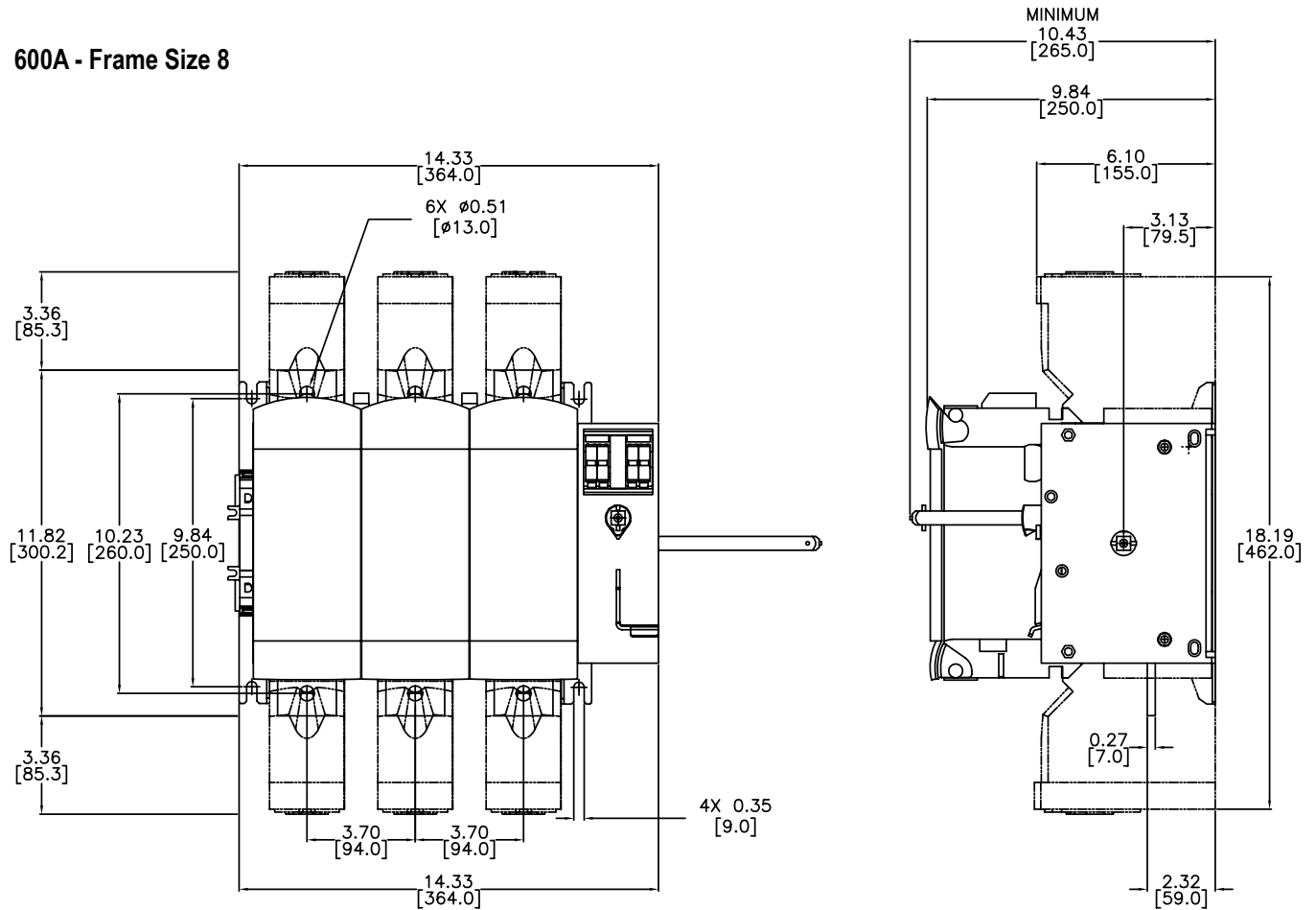
Please see our website www.AutomationDirect.com for complete engineering drawings.

FUSERBLOC UL 98 Fusible Disconnect Switches



Dimensions [inches/mm]

600A - Frame Size 8



Please see our website www.AutomationDirect.com for complete engineering drawings.

Accessories Dimensions



Handles [inches/mm]

| Direct Handles for UL 98 Fusible Disconnect Switches | |
|--|-------------------|
| 36297910 | 38596011 |
| Handle Dimensions | Handle Dimensions |
| | |

| External Handles for UL 98 Fusible Disconnect Switches | | | |
|--|--|--|---------------|
| S1 Type | | | |
| Handle Dimensions | Direction of Operation | | Door Drilling |
| | <p>TEST TEST POSITION INCLUDED ON CERTAIN MODELS ONLY AS INDICATED IN THE SELECTION TABLES</p> | | |
| S2 Type | | | |
| Handle Dimensions | Direction of Operation | | Door Drilling |
| | <p>TEST TEST POSITION INCLUDED ON CERTAIN MODELS ONLY AS INDICATED IN THE SELECTION TABLES</p> | | |
| S3 Type | | | |
| Handle Dimensions | Direction of Operation | | Door Drilling |
| | <p>TEST TEST POSITION INCLUDED ON CERTAIN MODELS ONLY AS INDICATED IN THE SELECTION TABLES</p> | | |

Note: Test position included on certain models only as indicated in the selection tables.
Please see our website www.AutomationDirect.com for complete engineering drawings.

Accessories Dimensions



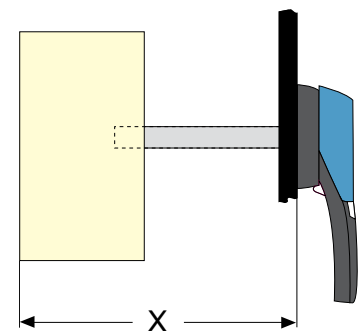
Shafts for Fusible Disconnect Switches

[inches/mm]

| Shafts for Fusible Disconnect Switches | | | | | | | | | |
|--|-------------|--------------------|--------|-----|---------------------------|-------------|--------------------|--------|-----|
| Shafts for S0 Handle Type | Part Number | Body Switch Rating | Length | | Shafts for S2 Handle Type | Part Number | Body Switch Rating | Length | |
| | | | in | mm | | | | in | mm |
| | 14050620 | 30A | 7.9 | 200 | | 14001020 | 30A to 400A | 7.9 | 200 |
| | 14050632 | | 12.6 | 320 | | 14001032 | 30A to 200A | 12.6 | 320 |
| | 14050640 | | 15.7 | 400 | | 14001040 | 30A to 400A | 15.7 | 400 |
| Shafts for S1 Handle Type | Part Number | Switch Body Rating | Length | | Shafts for S3 Handle Type | Part Number | Switch Body Rating | Length | |
| | | | in | mm | | | | in | mm |
| | 14010520 | 30A | 7.9 | 200 | | 14001220 | 600A | 7.9 | 200 |
| | 14010532 | | 12.6 | 320 | | 14001232 | | 12.6 | 320 |
| | 14010540 | | 15.7 | 400 | | 14001240 | | 15.7 | 400 |

Please see our website www.AutomationDirect.com for complete engineering drawings.

| Shaft Length Minimum Dimensions | | | | | | |
|---|---------------|-----------|-------------|--------|-----|-------------|
| Use standard lengths: - 7.9 in / 200mm - 12.6 in / 320mm - 15.7 in / 400mm | | | | | | |
| Switch Body Rating (A) | Dimension X | | Handle Type | Length | | Part Number |
| | in | mm | | in | mm | |
| 30 | 4.02 - 9.65 | 102 - 245 | S0 | 7.9 | 200 | 14050620 |
| 30 | 4.02 - 14.37 | 102 - 365 | S0 | 12.6 | 320 | 14050632 |
| 30 | 4.02 - 17.52 | 102 - 445 | S0 | 15.7 | 400 | 14050640 |
| 30 | 4.02 - 9.65 | 102 - 245 | S1 | 7.9 | 200 | 14010520 |
| 30 | 4.02 - 14.37 | 102 - 365 | S1 | 12.6 | 320 | 14010532 |
| 30 | 4.02 - 17.52 | 102 - 445 | S1 | 15.7 | 400 | 14010540 |
| 30 - 100 | 5.3 - 9.06 | 135 - 230 | S2 | 7.9 | 200 | 14001020 |
| 200 | 5.7 - 9.06 | 145 - 230 | S2 | 7.9 | 200 | 14001020 |
| 400 | 7.87 - 10.24 | 200 - 260 | S2 | 7.9 | 200 | 14001020 |
| 30 - 100 | 5.3 - 13.78 | 135 - 350 | S1, S2 | 12.6 | 320 | 14001032 |
| 200 | 5.7 - 13.78 | 145 - 350 | S2 | 12.6 | 320 | 14001032 |
| 400 | 7.87 - 14.96 | 200 - 380 | S2 | 12.6 | 320 | 14001032 |
| 30 - 100 | 5.3 - 16.93 | 135 - 430 | S1, S2 | 15.7 | 400 | 14001040 |
| 200 | 5.7 - 16.93 | 145 - 430 | S2 | 15.7 | 400 | 14001040 |
| 400 | 7.87 - 18.1 | 200 - 460 | S2 | 15.7 | 400 | 14001040 |
| 600 - 800 | 10.63 - 11.97 | 270 - 304 | S3 | 7.9 | 200 | 14001220 |
| 600 - 800 | 10.63 - 16.69 | 270 - 424 | S3 | 12.6 | 320 | 14001232 |
| 600 - 800 | 10.63 - 19.84 | 270 - 504 | S3 | 15.7 | 400 | 14001240 |

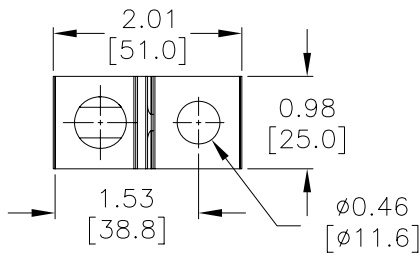


Accessories Dimensions

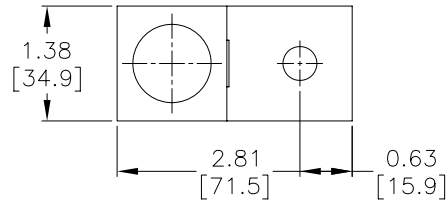


Lugs

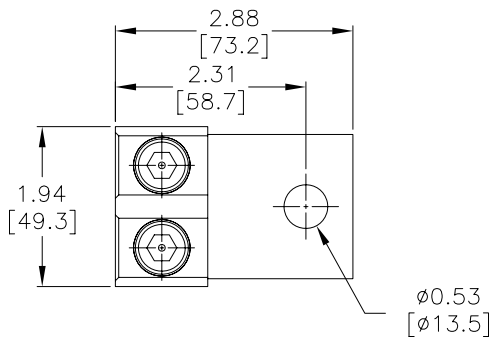
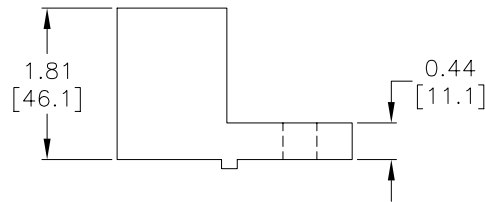
[inches/mm]



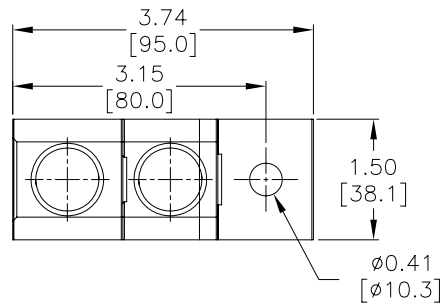
39542020, 39543020, 39544020



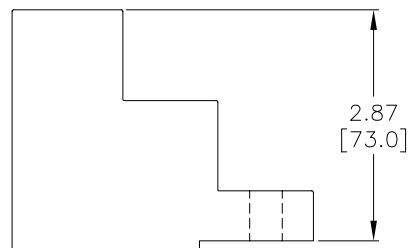
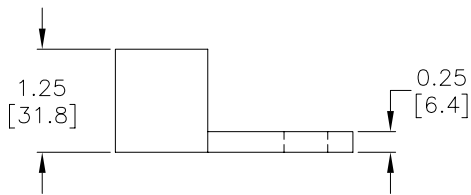
39543040



39543041



39543060



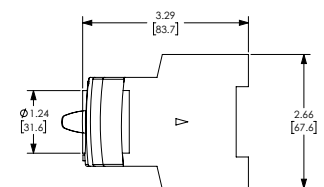
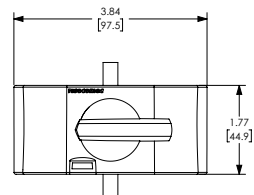
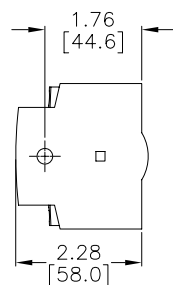
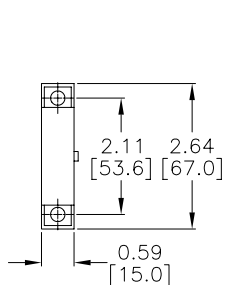
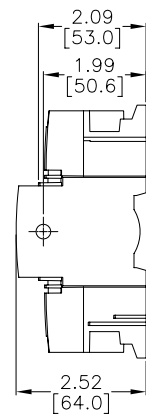
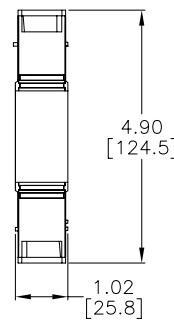
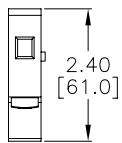
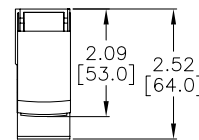
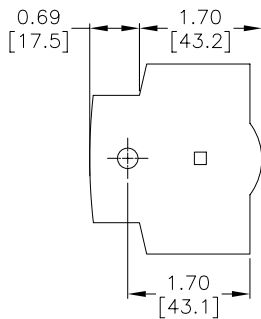
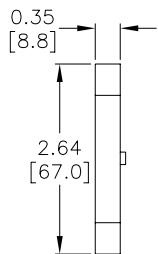
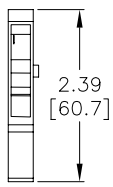
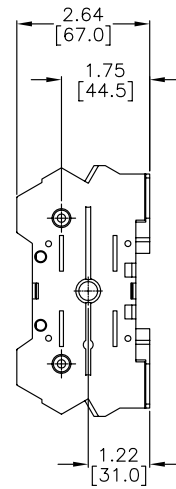
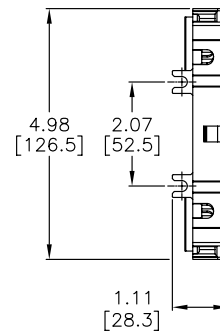
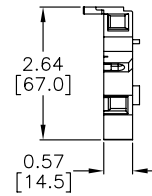
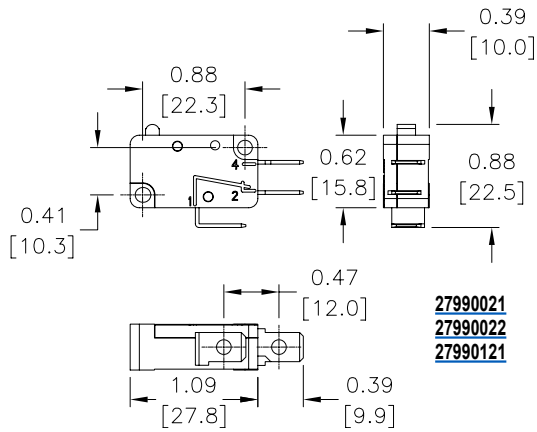
Please see our website www.AutomationDirect.com for complete engineering drawings.

Accessories Dimensions



Auxiliary Contacts and Additional Poles

[inches/mm]



Please see our website www.AutomationDirect.com for complete engineering drawings.

Disconnect Switches

Introduction

UL®/CSA® Standards for Disconnect Switches

UL 98 – Enclosed and Deadfront Switches (CSA C22.2 No. 4)

These requirements cover enclosed or deadfront switches, with or without provision for fuses, at 600V or less. These products are used as disconnecting means without restrictions; they are heavy-duty products requiring 2 inches (50mm) minimum of creepage distance between phases, which gives maximum safety for users and installation. The short-circuit withstand of these products goes up to 200kA.

UL 489 – Molded Case Switches (CSA C22.22 No. 5)

These requirements cover molded case circuit breakers, molded case switches and fused molded case switches, rated at 600V or less and 6000A or less.

NFPA® 79 Electrical Standard for Industrial Machinery

The following types of machines are identified as industrial machinery:

- Metalworking machine tools, including machines that cut or form metal
- Plastics machinery
- Wood machinery, including woodworking, laminating and sawmill machines
- Assembly machines
- Material handling machines, including industrial robots and transfer machines
- Inspection and testing machines, including coordinate measuring and in-process gauging machines

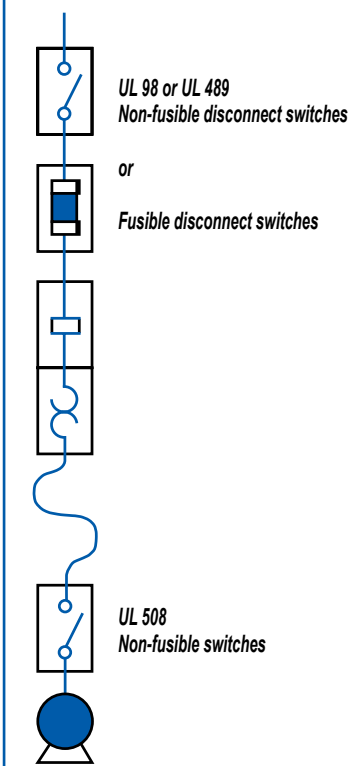
UL® Standards for Electrical Machinery

UL 508 – Industrial Control Equipment (CSA C22.2 No. 14)

These requirements cover manual, magnetic and solidstate starters and controllers, overload relays, pushbuttons, selector switches and control lights. These products are smaller, requiring only a creepage distance between phases of 0.50 inch (12.7 mm). Their use as a disconnecting means is limited to local disconnection of motors. These products can be used as a disconnect means only when they have been additionally tested "suitable as motor disconnect." This additional testing ensures that the switch has a proper closing capacity on a short circuit.

UL 508 devices **cannot** be used as main disconnect of an electrical panel, e.g., at the entrance of control panels. A manual motor controller marked "suitable as motor disconnect" shall be installed only on the load side of the branch circuit protective device [UL 508A 30.3.3 and NEC 430.109 (6)].

Typical Control Panel



Meeting the requirements of UL508A and NFPA79

The disconnect shall be operable independent of the door position.

The disconnect must be operable, by qualified persons, independent of the door position without the use of accessory tools or devices.

Note: NFPA 79; Paragraph 5.3.3.1 (5).

An operating mechanism for the disconnecting means shall be operable independent of the door position without the use of accessory tools or devices.

Note: UL 508A; Paragraph 66.6.3 c.