

# Fuji Duo Series Combination Starter

BM3RHB-xxx Manual Motor Starter Prices			
Part Number	Price	Part Number	Price
<a href="#">BM3RHB-P16</a>	\$75.00	<a href="#">BM3RHB-6P3</a>	\$75.00
<a href="#">BM3RHB-P25</a>	\$75.00	<a href="#">BM3RHB-010</a>	\$79.00
<a href="#">BM3RHB-P40</a>	\$75.00	<a href="#">BM3RHB-013</a>	\$79.00
<a href="#">BM3RHB-P63</a>	\$75.00	<a href="#">BM3RHB-016</a>	\$79.00
<a href="#">BM3RHB-001</a>	\$75.00	<a href="#">BM3RHB-020</a>	\$79.00
<a href="#">BM3RHB-1P6</a>	\$75.00	<a href="#">BM3RHB-025</a>	\$95.00
<a href="#">BM3RHB-2P5</a>	\$75.00	<a href="#">BM3RHB-032</a>	\$120.00
<a href="#">BM3RHB-004</a>	\$75.00		



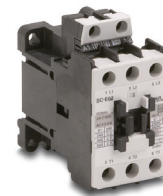
BM3VHB-xxx Manual Motor Starter Prices			
Part Number	Price	Part Number	Price
<a href="#">BM3VHB-010</a>	\$184.00	<a href="#">BM3VHB-032</a>	\$228.00
<a href="#">BM3VHB-013</a>	\$184.00	<a href="#">BM3VHB-040</a>	\$228.00
<a href="#">BM3VHB-016</a>	\$184.00	<a href="#">BM3VHB-050</a>	\$237.00
<a href="#">BM3VHB-020</a>	\$184.00	<a href="#">BM3VHB-063</a>	\$237.00
<a href="#">BM3VHB-025</a>	\$216.00		



Note: When using BM3VHB-xxx MMS in a UL type E application you must also use part number BZ0TKUAB (short circuit contact block).

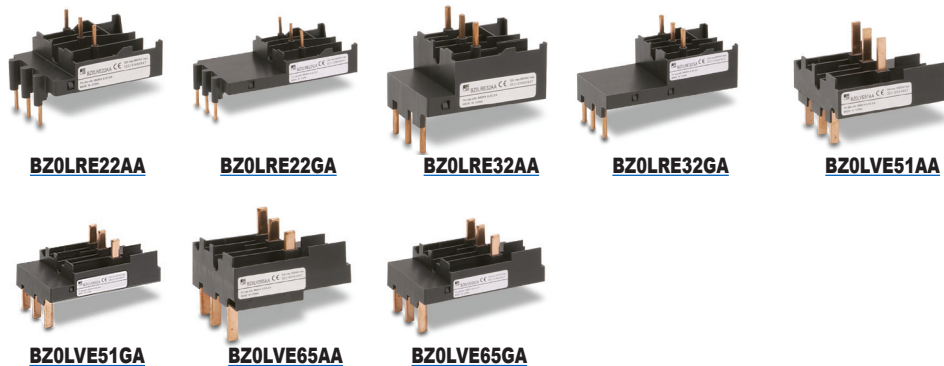
Note: When using BM3RHB-xxx MMS in a UL type E application, you must also use part number BZ0TKUAB (short circuit contact block) and BZ0TCRE (line side terminal cover).

Contactor Prices							
Part Number	Price	Part Number	Price	Part Number	Price	Part Number	Price
<a href="#">SC-E02-24VAC</a>	Retired	<a href="#">SC-E05-24VAC</a>	Retired	<a href="#">SC-E2S-24VAC</a>	\$96.00	<a href="#">SC-E5-24V</a>	\$277.00
<a href="#">SC-E02-110VAC</a>	Retired	<a href="#">SC-E05-110VAC</a>	Retired	<a href="#">SC-E2S-110VAC</a>	\$96.00	<a href="#">SC-E5-100V</a>	\$277.00
<a href="#">SC-E02-220VAC</a>	Retired	<a href="#">SC-E05-220VAC</a>	Retired	<a href="#">SC-E2S-220VAC</a>	\$96.00	<a href="#">SC-E5-200V</a>	\$277.00
<a href="#">SC-E02G-24VDC</a>	Retired	<a href="#">SC-E05G-24VDC</a>	Retired	<a href="#">SC-E2SG-24VDC</a>	\$114.00	<a href="#">SC-E6-24V</a>	\$355.00
<a href="#">SC-E03-24VAC</a>	Retired	<a href="#">SC-E1-24VAC</a>	\$56.00	<a href="#">SC-E3-24VAC</a>	\$109.00	<a href="#">SC-E6-100V</a>	\$355.00
<a href="#">SC-E03-110VAC</a>	Retired	<a href="#">SC-E1-110VAC</a>	\$56.00	<a href="#">SC-E3-110VAC</a>	\$109.00	<a href="#">SC-E6-200V</a>	\$355.00
<a href="#">SC-E03-220VAC</a>	Retired	<a href="#">SC-E1-220VAC</a>	\$56.00	<a href="#">SC-E3-220VAC</a>	\$109.00	<a href="#">SC-E7-24V</a>	\$413.00
<a href="#">SC-E03G-24VDC</a>	Retired	<a href="#">SC-E1G-24VDC</a>	\$66.00	<a href="#">SC-E3G-24VDC</a>	\$133.00	<a href="#">SC-E7-100V</a>	\$413.00
<a href="#">SC-E04-24VAC</a>	Retired	<a href="#">SC-E2-24VAC</a>	\$79.00	<a href="#">SC-E4-24VAC</a>	\$111.00	<a href="#">SC-E7-200V</a>	\$413.00
<a href="#">SC-E04-110VAC</a>	Retired	<a href="#">SC-E2-110VAC</a>	\$79.00	<a href="#">SC-E4-110VAC</a>	\$111.00		
<a href="#">SC-E04-220VAC</a>	Retired	<a href="#">SC-E2-220VAC</a>	\$79.00	<a href="#">SC-E4-220VAC</a>	\$111.00		
<a href="#">SC-E04G-24VDC</a>	Retired	<a href="#">SC-E2G-24VDC</a>	\$96.00	<a href="#">SC-E4G-24VDC</a>	\$138.00		



## Link Modules and Base Plates

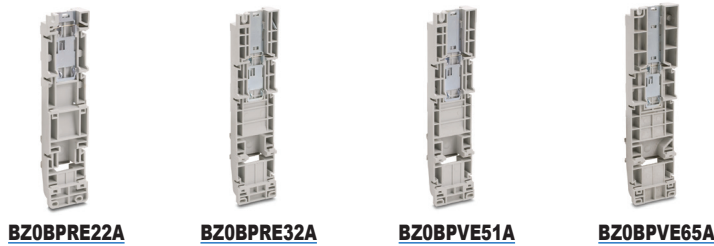
### Link Modules



Link modules						
Part Number	Price	Description	Applicable MMS	Applicable Magnetic Contactor	Operating Coil (V)	Weight (g/lb)
<a href="#">BZ0LRE22AA</a>	\$13.00	The link module connects the manual motor starter and magnetic contactor electrically and mechanically.	BM3RHB-xxx	SC-E02, E03, E04, E05-xxxVAC	AC	25/0.055
<a href="#">BZ0LRE22GA</a>	\$17.50			SC-E02G, E03G, E04G, E05G-xxxVDC	DC	35/0.077
<a href="#">BZ0LRE32AA</a>	\$15.50			SC-E1-xxxVAC	AC	45/0.1
<a href="#">BZ0LRE32GA</a>	\$19.50			SC-E1G-xxxVDC	DC	60/0.13
<a href="#">BZ0LVE51AA</a>	\$17.50		SC-E1, E2, E2S-xxxVAC	BM3VHB-xxx	AC	45/0.1
<a href="#">BZ0LVE51GA</a>	\$20.50		SC-E1G, E2G, E2SG-xxxVDC		DC	60/0.13
<a href="#">BZ0LVE65AA</a>	\$20.50		SC-E3-xxxVAC		AC	65/0.14
<a href="#">BZ0LVE65GA</a>	\$24.50		SC-E3G-xxxVDC		DC	80/0.176

# Fuji Duo Series Combination Starters

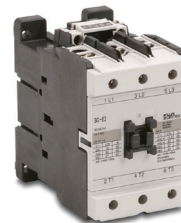
## Base plates



Base Plates						
Part Number	Price	Description	Applicable MMS	Applicable Magnetic Contactor	Operating Coil (V)	Weight (g/lb)
<a href="#">BZ0BPVE22A</a>	\$19.50	The base plate is a plastic plate to which the combination starter is mounted. The base plate can then be mounted to a panel with screws or to a DIN rail.	BM3RHB-xxx	SC-E02, E03, E04, E05, SC-E02G, E03G, E04G, E05G-xxx	AC/DC	100/0.22
<a href="#">BZ0BPVE32A</a>	\$20.50			SC-E1, SC-E1G-xxx	AC/DC	160/0.35
<a href="#">BZ0BPVE51A</a>	\$23.50		BM3VHB-xxx	SC-E1, E2, E2S, SC-E1G, E2G, E2SG-xxx	AC/DC	160/0.35
<a href="#">BZ0BPVE65A</a>	Retired			SC-E3, SC-E3G-xxx	AC/DC	195/0.43

## How to reverse the contactor nameplate

When the manual motor starter and magnetic contactor are configured as a combination starter, the contactor nameplate ends up facing the wrong direction because the coil terminal of the magnetic contactor faces downward. Use the following procedure to turn the nameplate upside down.

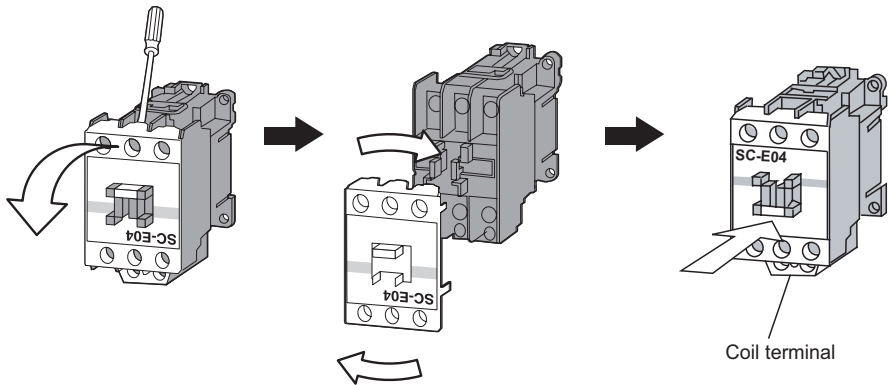


Contactor nameplate must be reversed when used in a combination starter configuration.

SC-E2S

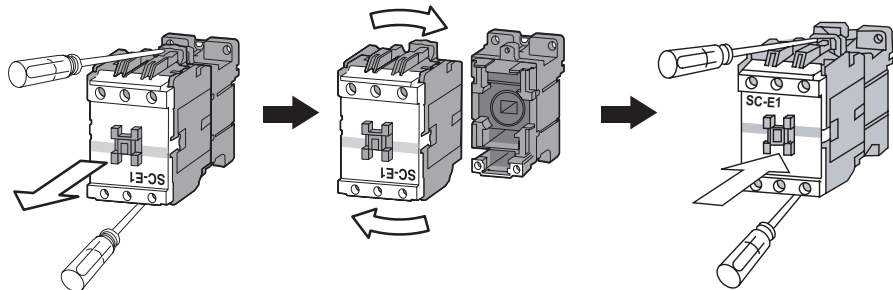
### For SC-E02 to SC-E05-xxx contactors

- Insert a flat-blade screwdriver between the arc-chamber of the S phase or V phase and the terminal screw, and lift the arc-chamber to remove it.
- After removing the cover, turn the cover 180 degrees (top to bottom), then re-mount it onto the magnetic contactor.
- Align the cover with the top and bottom terminals and press it on firmly by hand.



### For SC-E1 to SC-E3-xxx contactors

- Use a Phillips screwdriver to remove the two screws securing the front and back bodies.
- Remove the front body and turn it 180 degrees (top to bottom), then re-mount it with the screws.
- Make sure that no foreign matter enters the interior of the magnetic contactor during this removal/re-mounting procedure.

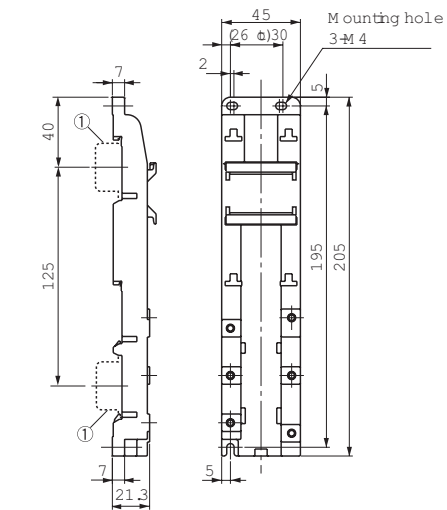


# Fuji Duo Series Combination Starters

## Dimensions (mm)



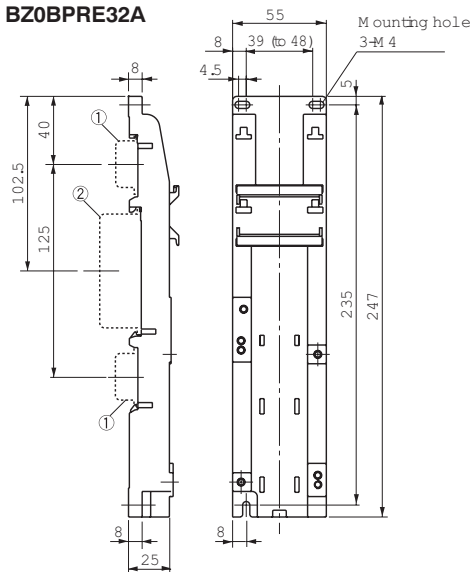
**BZ0BPRE22A**



① 35mm wide rail (height 15mm) x 2

Base plate	MMS	Contactoꝛ
BZ0BPRE22A	BM 3RHB-xxx	SC-E02, E03, E04, E05-xxx E02G, E03G, E04G, E05G-xx:

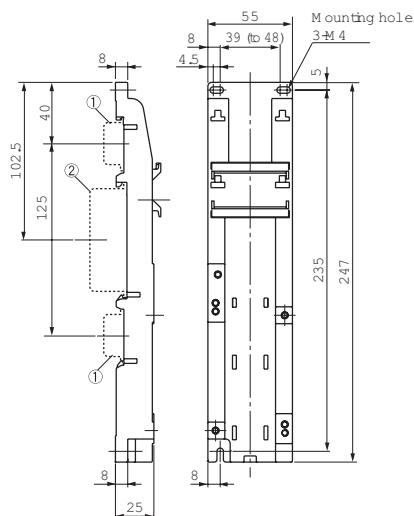
**BZ0BPRE32A**



① 35mm wide rail (height 15mm) x 2  
② 75mm wide rail (height 25mm) x 1

Base plate	MMS	Contactoꝛ
BZ0BPRE32A	BM 3RHB-xxx	SC-E1, E1G-xxx

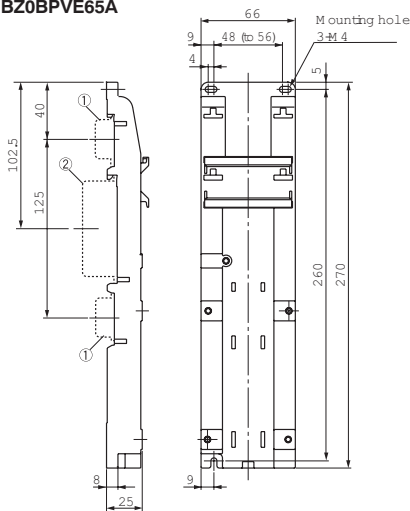
**BZ0BPVE51A**



① 35mm wide rail (height 15mm) x 2  
② 75mm wide rail (height 25mm) x 1

Base plate	MMS	Contactoꝛ
BZ0BPVE51A	BM 3VHB-xxx	SC-E1, E2, E2S-xxx E1G, E2G, E2SG-xxx

**BZ0BPVE65A**



① 35mm wide rail (height 15mm) x 2  
② 75mm wide rail (height 25mm) x 1

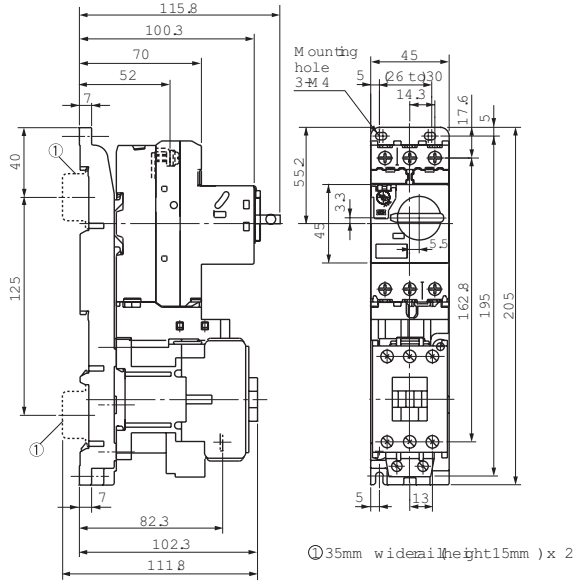
Base plate	MMS	Contactoꝛ
BZ0BPVE65A	BM 3VHB-xxx	SC-E3, E3G-xxx

# Fuji Duo Series Combination Starters



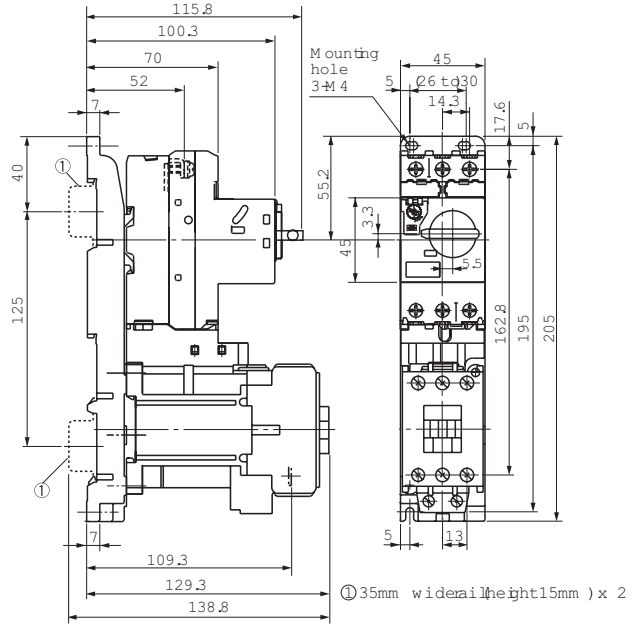
## Dimensions (mm)

**BM3RHB-xxx + SC-E02 to E05-xxx**



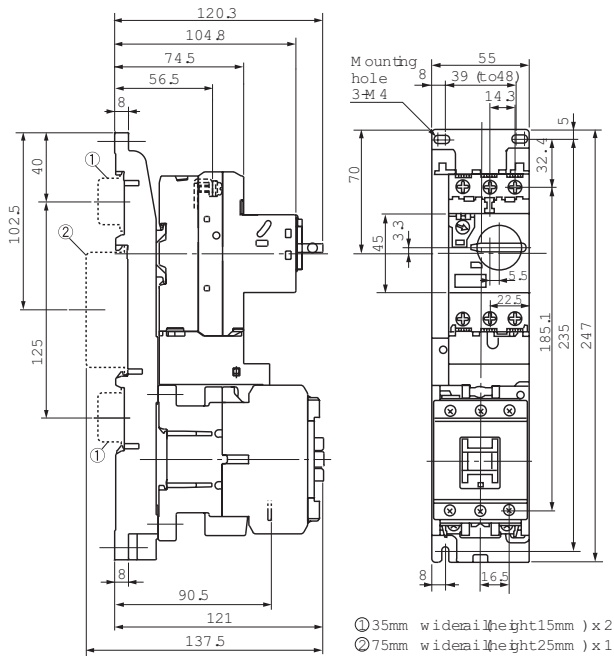
MMS	Contactors	Link module	Base plate
BM 3RHB-xxx	SC-E02, E03, E04, E05-xxx	BZ0LRE22AA	BZ0BPRE22A

**BM3RHB-xxx + SC-E02G to E05G-xxx**



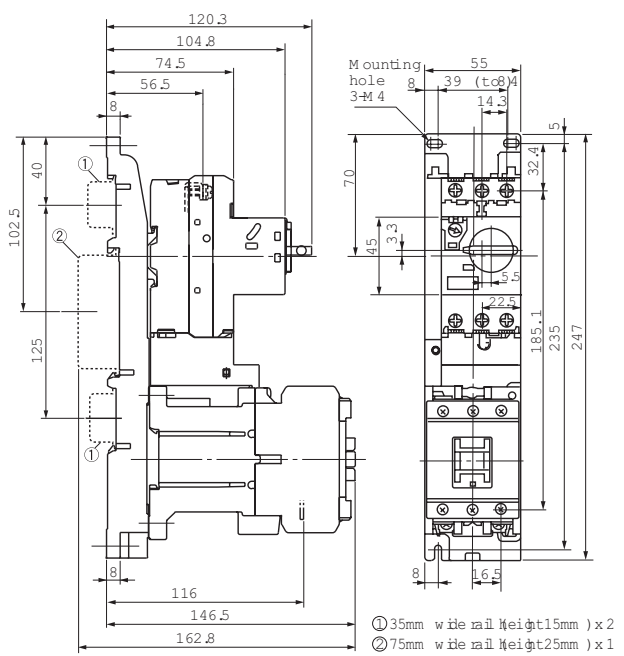
MMS	Contactors	Link module	Base plate
BM 3RHB-xxx	SC-E02G, E03G, E04G, E05G-xxx	BZ0LRE22GA	BZ0BPRE22A

**BM3RHB-xxx + SC-E1-xxx**



MMS	Contactors	Link module	Base plate
BM 3RHB-xxx	SC-E1-xxx	BZ0LRE32AA	BZ0BPRE32A

**BM3RHB-xxx + SC-E1G-xxx**



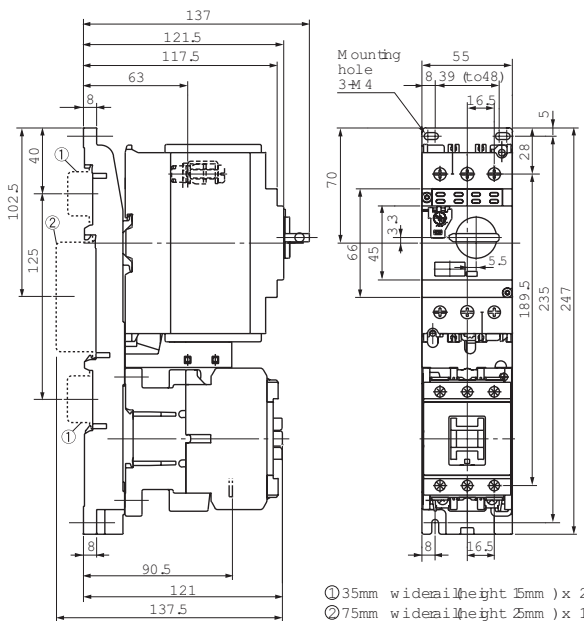
MMS	Contactors	Link module	Base plate
BM 3RHB-xxx	SC-E1G-xxx	BZ0LRE32GA	BZ0BPRE32A

# Fuji Duo Series Combination Starters

## Dimensions (mm)

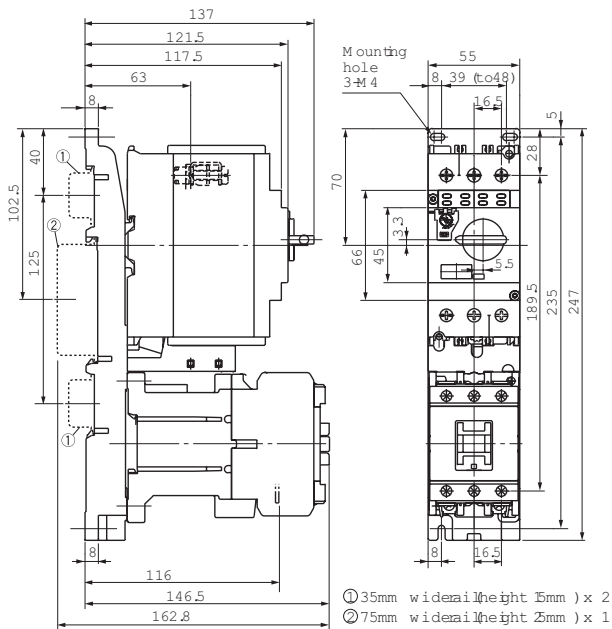


**BM3VHB-xxx + SC-E1, E2, E2S-xxx**



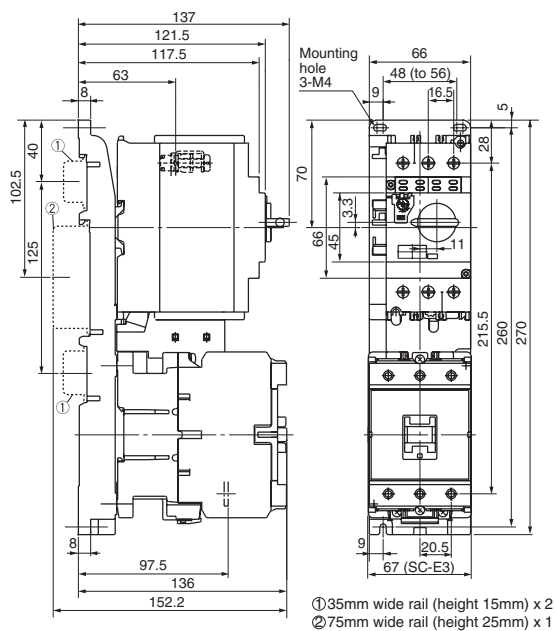
MMS	Contactors	Link module	Base plate
BM3VHB-xxx	SC-E1, E2, E2S-xxx	BZ0LVE51AA	BZ0BPVE51A

**BM3VHB-xxx + SC-E1G, E2G, E2SG-xxx**



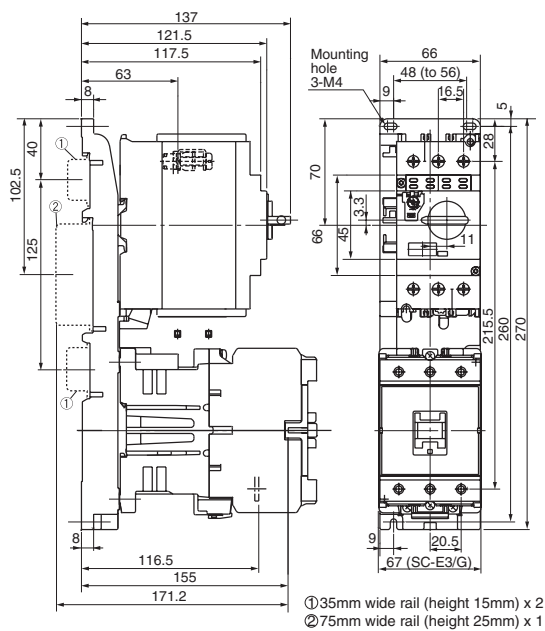
MMS	Contactors	Link module	Base plate
BM3VHB-xxx	SC-E1G, E2G, E2SG-xxx	BZ0LVE51GA	BZ0BPVE51A

**BM3VHB-xxx + SC-E3-xxx**



MMS	Contactors	Link module	Base plate
BM3VHB-xxx	SC-E3-xxx	BZ0LVE65AA	BZ0BPVE65A

**BM3VHB-xxx + SCE3G-xxx**



MMS	Contactors	Link module	Base plate
BM3VHB-xxx	SC-E3G-xxx	BZ0LVE65GA	BZ0BPVE65A