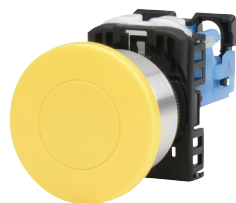




# Command Non-Illuminated 22mm Metal Pushbuttons



**AR22F0R-01RZA**



**AR22M0R-10YZA**



**AR22E0R-10SZA**



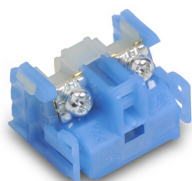
**AR22FAR-01C01ZA**



**AR22FAR-10C03ZA**

Command Non-Illuminated 22mm Metal Pushbuttons					
Part Number	Color	Price	Drawing Link	Operator	Contacts
<a href="#"><u>AR22F0R-10BZA</u></a>	Black	\$11.00	<a href="#"><u>PDF</u></a>	Momentary 30mm flush round head	N.O.
<a href="#"><u>AR22F0R-01RZA</u></a>	Red	\$11.00	<a href="#"><u>PDF</u></a>		N.C.
<a href="#"><u>AR22F0R-10GZA</u></a>	Green	\$11.00	<a href="#"><u>PDF</u></a>		N.O.
<a href="#"><u>AR22F0R-10YZA</u></a>	Yellow	\$11.00	<a href="#"><u>PDF</u></a>		N.O.
<a href="#"><u>AR22F0R-10SZA</u></a>	Blue	\$11.00	<a href="#"><u>PDF</u></a>		N.O.
<a href="#"><u>AR22F0R-10WZA</u></a>	White	\$11.00	<a href="#"><u>PDF</u></a>		N.O.
<a href="#"><u>AR22FAR-01C01ZA</u></a>	White	\$13.50	<a href="#"><u>PDF</u></a>	Momentary 30mm flush round head w/OFF imprint (red)	N.C.
<a href="#"><u>AR22FAR-10C03ZA</u></a>	White	\$13.50	<a href="#"><u>PDF</u></a>	Momentary 30mm flush round head w/ON imprint (green)	N.O.
<a href="#"><u>AR22M0R-10BZA</u></a>	Black	\$13.00	<a href="#"><u>PDF</u></a>	Momentary 40mm mushroom head	N.O.
<a href="#"><u>AR22M0R-01RZA</u></a>	Red	\$13.00	<a href="#"><u>PDF</u></a>		N.C.
<a href="#"><u>AR22M0R-10GZA</u></a>	Green	\$13.00	<a href="#"><u>PDF</u></a>		N.O.
<a href="#"><u>AR22M0R-10YZA</u></a>	Yellow	\$13.00	<a href="#"><u>PDF</u></a>		N.O.
<a href="#"><u>AR22M0R-10SZA</u></a>	Blue	\$13.00	<a href="#"><u>PDF</u></a>		N.O.
<a href="#"><u>AR22M0R-10WZA</u></a>	White	\$13.00	<a href="#"><u>PDF</u></a>		N.O.
<a href="#"><u>AR22E0R-10BZA</u></a>	Black	\$11.00	<a href="#"><u>PDF</u></a>	Momentary 30mm extended round head	N.O.
<a href="#"><u>AR22E0R-01RZA</u></a>	Red	\$11.00	<a href="#"><u>PDF</u></a>		N.C.
<a href="#"><u>AR22E0R-10GZA</u></a>	Green	\$11.00	<a href="#"><u>PDF</u></a>		N.O.
<a href="#"><u>AR22E0R-10YZA</u></a>	Yellow	\$11.00	<a href="#"><u>PDF</u></a>		N.O.
<a href="#"><u>AR22E0R-10SZA</u></a>	Blue	\$11.00	<a href="#"><u>PDF</u></a>		N.O.
<a href="#"><u>AR22E0R-10WZA</u></a>	White	\$11.00	<a href="#"><u>PDF</u></a>		N.O.

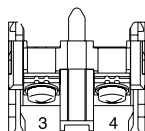
# Accessories for 22mm Command Series Pilot Devices

**AR9B290**

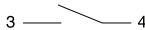
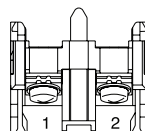
Contact Blocks for Command Series 22mm Pushbuttons					
Part Number	Qty	Price	Drawing Link	Color	Contacts
<a href="#"><u>AR9B290</u></a>	1	\$6.75	<a href="#"><u>PDF</u></a>	Blue	N.O.
<a href="#"><u>AR9B291</u></a>	1	\$6.75	<a href="#"><u>PDF</u></a>	Red	N.C.

Minimum current requirement AC/DC is 5mA

## Terminal Layout



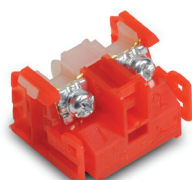
Terminal No.3, 4

**AR9B290**

Terminal No.1, 2

**AR9B291**

Max 6 contacts for non-illuminated momentary devices. Max 4 for alternate action non-illuminated devices.  
 Max 5 contacts for illuminated momentary devices. Max 3 for alternate action illuminated devices.  
 \*Exceeding the maximum number of contacts could affect the mechanical durability of the operators.

**AR9B291**

## LED Bulbs for Command Series 22mm Pilot Devices

Part Number	Color	Qty	Price	Use With	Lamp Voltage	Current Consumption	Power Consumption	Lamp Durability
<a href="#"><u>APX510-24R</u></a>	Red	2	\$17.00	AR22 / DR22 Series	24V AC/DC	12mA AC 11mA DC	0.8 W	30,000h
<a href="#"><u>APX510-24G</u></a>	Green	2	\$17.00					
<a href="#"><u>APX510-24Y</u></a>	Yellow	2	\$17.00					
<a href="#"><u>APX510-24S</u></a>	Blue	2	\$63.00					
<a href="#"><u>APX510-24O</u></a>	Orange	2	\$17.00					

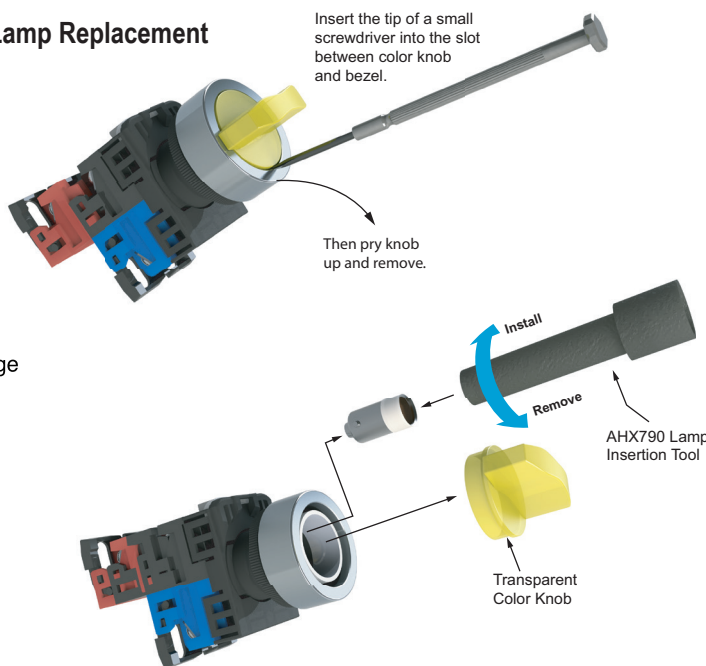
\*Lamp base: Ba9s/13

**APX510-24R**

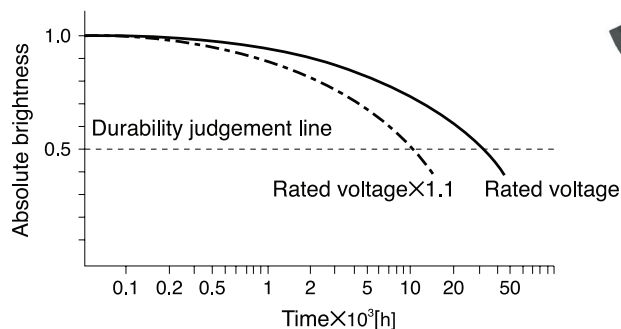
## Lamp Replacement

Insert the tip of a small screwdriver into the slot between color knob and bezel.

Then pry knob up and remove.



## Estimated durability for LED lamps



Notes: • Durability at Ta=25°C  
 • Durability is affected by temperature, humidity, and voltage fluctuation.



# Command Series 22mm Pilot Devices Specifications

Specifications (Indoor Use)			
	<i>Pushbuttons</i> <i>Emergency stop pushbuttons</i> <i>Selector switches</i>	<i>Joysticks</i>	<i>Pilot Lights</i>
<i>Rated thermal current (contact block)</i>	A600 / P600	–	–
<i>Mechanical durability</i>	See durability table below	250,000 operations	–
<i>Electrical durability</i>	500,000 operations at 220V AC 6A 1 million operations at 220V AC 3A	100,000 operations at 220V AC 1A (Res. load)	–
<i>Operating frequency</i>	1200 operations/hour (On-load factor: 40%)		–
<i>Operating force (Avg)</i>	9N – Pushbuttons 30-45 N – Emergency stop pushbuttons 0.15 - 0.1 N·m – Selector switches	Less than 100N	
<i>Positive opening operation</i>	All functions incorporating a N.C. contact are positive-opening operation.		
<i>Dielectric strength</i>	2,500VAC, 1 minute (w/o transformer 2000VAC)	2000VAC, 1 minute (Pilot light with transformer: 2500 VAC, 1minute)	
<i>Insulation resistance</i>	100MΩ or more (500VDC megger)		
<i>Rated impulse dielectric strength</i>	6kV	–	6kV
<i>Conditional short-circuit current</i>	1000A		–
<i>Short-circuit protective device</i>	Fuse 15A (recommended, not supplied)	Fuse 1A (recommended, not supplied)	–
<i>Pollution degree</i>	3		
<i>Vibration</i>	Resonance: 10 to 55Hz, double amplitude 0.1 mm* / Constant: 16.7 Hz, double amplitude 3mm		
<i>Shock</i>	Malfunction durability: 100 m/s² ** /	Mechanical durability: 500 m/s²	Mechanical durability: 500 m/s²
<i>Ambient temperature (no condensation or no icing)</i>	-20 to +70°C [-4 to +158°F] Illuminated type: -20 to -50°C [-4 to -58°F]	-5 to +60°C [+23 to +140°F]	-2 to +50°C [-4 to +122°F]
<i>Temperature ratings</i>	Storage: -40 to +80°C [-40 to +176°F]		
<i>Humidity</i>	45 to 85% RH (within -5° to +40°C)		
<i>Degree of protection</i>	IP65		
<i>Initial contact resistance</i>	≤ 50mΩ	–	–
<i>Terminal markings</i>	IEC 60445	–	–
<i>Connections</i>	AWG 18 to AWG 14; Stripping length: 8mm to 11mm / Tightening torque: 0.8 to 1.0 N·m, 7.1 in·lb to 8.8 in·lb		
<i>Contacts operation</i>	Self-cleaning types. Slow action. Positive opening.		
<i>Operation frequency</i>	1,200 cycle/hour (Application ratio 40%)	–	–
<i>Utilization category/contact ratings</i>	AC-15: 24VAC at 6A, 110VAC at 6A DC-13: 24VDC at 4A, 110VDC at 1.3 A	AC-1: 110VAC at 0.3 A DC-13: 24VDC at 0.7 A, 110VDC at 0.15 A	–
<i>Rated insulation voltage</i>	600V AC/DC***	250V AC/DC	250V AC/DC (w/transformer 600VAC)
<i>Materials</i>	Enclosure: Polyamide / Contacts: silver, nickel		
<i>Standards</i>	UL 508, CSA C22.2, No.14, TUV - EN60947-5-1		
<i>Approvals</i>	UL file E44592, CSA file LR20479		

\* Emergency stop type: 10 to 500 Hz, double amplitude 0.7mm(acceleration 50m/s<sup>2</sup>), according to test condition of EN60947-5-5 (1998)

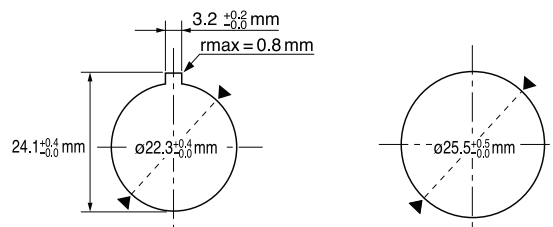
\*\* Emergency stop type: 150 m/s<sup>2</sup> \*\*\*Illuminated type without transformer

Mechanical Durability		
		Operations
Pushbutton switch	Momentary action	5 million
Illuminated pushbutton switch	Alternate action	1 million
E-stop pushbutton switch	Push-lock, turn-reset	100,000
E-stop illuminated pushbutton	Push-lock, pull-reset	30,000
Selector switch	Maintained 1, 2, 3, 4-contact	1 million
	Maintained 5, 6-contact	500,000
	Spring return, spring/manual return	200,000
Illuminated selector switch	Maintained	
	Without transformer 1, 2, 3-contact	1 million
	4-contact	500,000
	With transformer 1, 2-contact	1 million
	3-contact	500,000
	Spring return, spring/manual return	200,000

Note: Key insertion/removal durability for selector switch key types • Key type 10,000

## 22mm Pilot Devices Cutouts

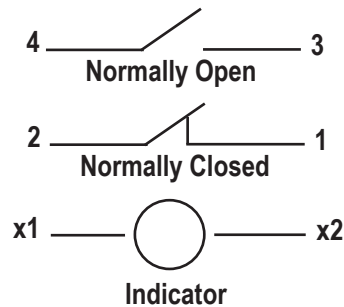
AR22 pilot devices can be mounted in either 22.3 or 25.5 mm diameter holes as shown in the figure below without any extra adapter.



Note: If key washer or legend plate is not used, 3.2 mm-wide location holes do not need to be cut out.

## Control Circuit Contact Electrical Ratings and Wiring

### Typical Wiring



### NEMA Mechanical Switching Ratings and Test Values for DC Control Circuit Contacts

Contact Rating Designation	Thermal Continuous Test Current (A)	Maximum Make or Break DC Current (A)			Volt amperes
		125 Volts	250 Volts	301 to 600 Volts	
<b>P300</b>	5.0	1.1	0.55	---	138
<b>P600</b>	5.0	1.1	0.55	0.20	138
<b>Q300</b>	2.5	0.55	0.27	---	69
<b>Q600</b>	2.5	0.55	0.27	0.10	69
<b>R300</b>	1.0	0.22	0.11	---	28

This chart is provided as a guideline only, and the ratings and values are not guaranteed to be accurate. It is the users' responsibility to properly size their control circuit devices. The chart values are from NEMA Standard ICS 5-2000, Table 1-4-2.

### NEMA Mechanical Switching Ratings and Test Values for AC Control Circuit Contacts

Contact Rating Designation	Thermal Continuous Test Current (A)	Maximum AC Current, 50/60Hz (A)								Volt amperes	
		120 Volts		240 Volts		480 Volts		600 Volts			
		Make	Break	Make	Break	Make	Break	Make	Break	Make	Break
A300	10	60	6.00	30	3.00	---	---	---	---	7200	720
A600	10	60	6.00	30	3.00	15	1.50	12	1.20	7200	720
B300	5	30	3.00	15	1.50	---	---	---	---	3600	360
B600	5	30	3.00	15	1.50	7.5	0.75	6	0.60	3600	360
C600	2.5	15	1.5	7.5	0.75	3.75	0.375	3.00	0.30	1800	180

This chart is provided as a guideline only, and the ratings and values are not guaranteed to be accurate. It is the users' responsibility to properly size their control circuit devices. The chart values are from NEMA Standard ICS 5-2000, Table 1-4-1.

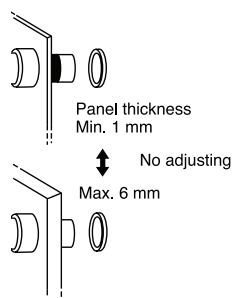
# Fuji Electric 22mm Pilot Devices Overview

## Pushbuttons, Selectors, Pilot Lights, Joysticks, Buzzers

Fuji Electric AR22 pilot devices can be mounted on panels up to 6mm thick by securing the operator with a locking nut from behind the panel without needing any adjustment.

### Easy mounting

Fuji AR22 pilot devices can be mounted on panels between 1 and 6mm thick and are mountable in panel cutouts of 22.3 or 25.5 mm. The button and lens can be mounted on a panel while the operator is engaged.



Panel cutting

Panel thickness  
Min. 1 mm

No adjusting

Max. 6 mm

### Pushbuttons

AR22F0R-01RZA

### Illuminated Pushbuttons

AR22F0L-10E3YZA

### Pilot Lights

DR22E3L-E3SZA

### E-Stop Pushbuttons

AR22V0R-01R

### Selector Switches

AR22PR-210BZA

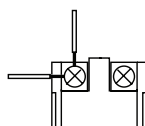
### Buzzers

DR22B8-EB

### Wiring

These pilot devices can be wired in both vertical and lateral directions making wiring in narrow spaces easier. Contact block color coding makes wiring even easier.

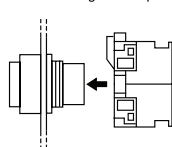
1N.O. Blue, 1N.C. Red

Lamp terminal and  
transformer unit: black

### Quick contact block and transformer replacement

Fuji AR22 pilot devices have a snap-on mounting that makes replacing or adding a contact block and transformer unit easier.

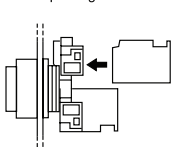
Connecting to the operator



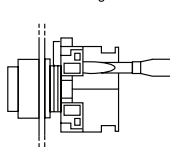
Detaching



Snap-fitting of contact blocks



Detaching



### Safety

AR22 pilot devices include terminal covers for added safety and security. Emergency stop pushbuttons include a trigger action mechanism that prevents the contacts from moving until the button is pushed and locked.

### Protection

AR22 pilot devices feature oil and dust-tight operator construction (IP65), except for buzzers DR22B5 (IP00), DR22B8 (IP54).

### Short depth

Fuji AR22 pilot devices are designed to occupy less space than traditional 22mm devices.

