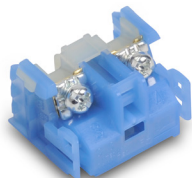


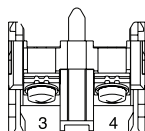
Accessories for 22mm Command Series Pilot Devices

**AR9B290**

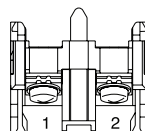
Contact Blocks for Command Series 22mm Pushbuttons					
Part Number	Qty	Price	Drawing Link	Color	Contacts
AR9B290	1	\$6.75	PDF	Blue	N.O.
AR9B291	1	\$6.75	PDF	Red	N.C.

Minimum current requirement AC/DC is 5mA

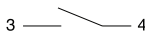
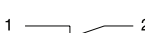
Terminal Layout



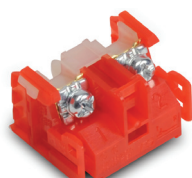
Terminal No.3, 4



Terminal No.1, 2

**AR9B290****AR9B291**

Max 6 contacts for non-illuminated momentary devices. Max 4 for alternate action non-illuminated devices.
 Max 5 contacts for illuminated momentary devices. Max 3 for alternate action illuminated devices.
 *Exceeding the maximum number of contacts could affect the mechanical durability of the operators.

**AR9B291**

LED Bulbs for Command Series 22mm Pilot Devices

Part Number	Color	Qty	Price	Use With	Lamp Voltage	Current Consumption	Power Consumption	Lamp Durability
APX510-24R	Red	2	\$17.00	AR22 / DR22 Series	24V AC/DC	12mA AC 11mA DC	0.8 W	30,000h
APX510-24G	Green	2	\$17.00					
APX510-24Y	Yellow	2	\$17.00					
APX510-24S	Blue	2	\$63.00					
APX510-24O	Orange	2	\$17.00					

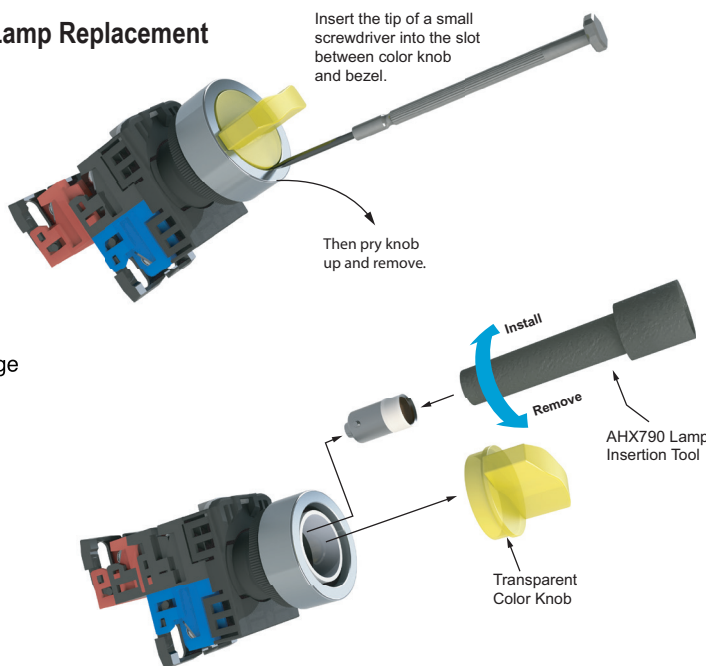
*Lamp base: Ba9s/13

**APX510-24R**

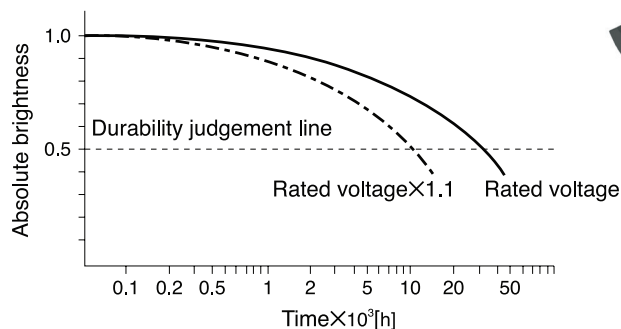
Lamp Replacement

Insert the tip of a small screwdriver into the slot between color knob and bezel.

Then pry knob up and remove.

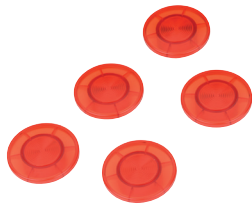


Estimated durability for LED lamps

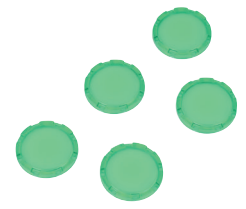
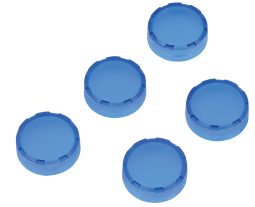


Notes: • Durability at Ta=25°C
 • Durability is affected by temperature, humidity, and voltage fluctuation.

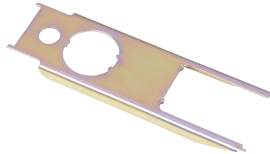
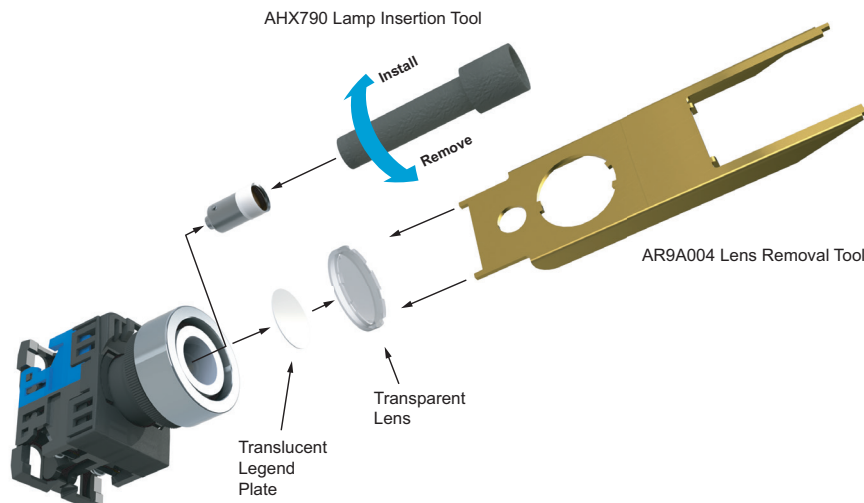
Accessories for 22mm Command Series Pilot Devices

**AR9C016-R****AR9C021-R**

Lenses for Command Series 22mm Illuminated Pushbuttons					
Part Number	Color	Qty	Price	Drawing Link	Use With
<u>AR9C016-R</u>	Red	5	\$5.25	<u>PDF</u>	AR22MOL, AR22M5L
<u>AR9C021-R</u>	Red	5	\$16.00	<u>PDF</u>	AR22VOR, AR22VOL
<u>AR9C011-R</u>	Red	5	\$2.50	<u>PDF</u>	AR22FOL AR22F5L
<u>AR9C011-G</u>	Green	5	\$2.50	<u>PDF</u>	
<u>AR9C011-Y</u>	Yellow	5	\$2.50	<u>PDF</u>	
<u>AR9C011-S</u>	Blue	5	\$2.50	<u>PDF</u>	
<u>AR9C011-C</u>	Clear	5	\$2.50	<u>PDF</u>	AR22EOL
<u>AR9C012-R</u>	Red	5	\$2.50	<u>PDF</u>	
<u>AR9C012-G</u>	Green	5	\$2.50	<u>PDF</u>	
<u>AR9C012-Y</u>	Yellow	5	\$2.50	<u>PDF</u>	
<u>AR9C012-S</u>	Blue	5	\$2.50	<u>PDF</u>	
<u>AR9C012-C</u>	Clear	5	\$2.50	<u>PDF</u>	

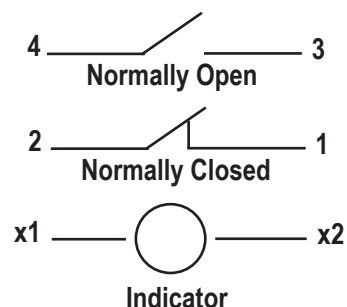
**AR9C011-G****AR9C012-S****AHX790**

Tools and Lock Nut for Use with Command Series 22mm Pilot Devices				
Part Number	Qty	Price	Drawing Link	Description
<u>AHX790</u>	1	\$3.75	<u>PDF</u>	Bulb removal tool
<u>AHX702</u>	1	\$6.50	N/A	Wrench/lamp removal tool
<u>AR9A004</u>	1	\$5.25	N/A	Wrench
<u>AR9R744</u>	5	\$2.50	<u>PDF</u>	Lock nut

**AHX702****AR9A004****AR9R744**

Control Circuit Contact Electrical Ratings and Wiring

Typical Wiring



NEMA Mechanical Switching Ratings and Test Values for DC Control Circuit Contacts

Contact Rating Designation	Thermal Continuous Test Current (A)	Maximum Make or Break DC Current (A)			Volt amperes
		125 Volts	250 Volts	301 to 600 Volts	
P300	5.0	1.1	0.55	---	138
P600	5.0	1.1	0.55	0.20	138
Q300	2.5	0.55	0.27	---	69
Q600	2.5	0.55	0.27	0.10	69
R300	1.0	0.22	0.11	---	28

This chart is provided as a guideline only, and the ratings and values are not guaranteed to be accurate. It is the users' responsibility to properly size their control circuit devices. The chart values are from NEMA Standard ICS 5-2000, Table 1-4-2.

NEMA Mechanical Switching Ratings and Test Values for AC Control Circuit Contacts

Contact Rating Designation	Thermal Continuous Test Current (A)	Maximum AC Current, 50/60Hz (A)								Volt amperes	
		120 Volts		240 Volts		480 Volts		600 Volts			
		Make	Break	Make	Break	Make	Break	Make	Break	Make	Break
A300	10	60	6.00	30	3.00	---	---	---	---	7200	720
A600	10	60	6.00	30	3.00	15	1.50	12	1.20	7200	720
B300	5	30	3.00	15	1.50	---	---	---	---	3600	360
B600	5	30	3.00	15	1.50	7.5	0.75	6	0.60	3600	360
C600	2.5	15	1.5	7.5	0.75	3.75	0.375	3.00	0.30	1800	180

This chart is provided as a guideline only, and the ratings and values are not guaranteed to be accurate. It is the users' responsibility to properly size their control circuit devices. The chart values are from NEMA Standard ICS 5-2000, Table 1-4-1.

Command Series 22mm Pilot Devices Specifications

Specifications (Indoor Use)			
	<i>Pushbuttons</i> <i>Emergency stop pushbuttons</i> <i>Selector switches</i>	<i>Joysticks</i>	<i>Pilot Lights</i>
Rated thermal current (contact block)	A600 / P600	–	–
Mechanical durability	See durability table below	250,000 operations	–
Electrical durability	500,000 operations at 220V AC 6A 1 million operations at 220V AC 3A	100,000 operations at 220V AC 1A (Res. load)	–
Operating frequency	1200 operations/hour (On-load factor: 40%)		–
Operating force (Avg)	9N – Pushbuttons 30-45 N – Emergency stop pushbuttons 0.15 - 0.1 N·m – Selector switches	Less than 100N	
Positive opening operation	All functions incorporating a N.C. contact are positive-opening operation.		
Dielectric strength	2,500VAC, 1 minute (w/o transformer 2000VAC)	2000VAC, 1 minute (Pilot light with transformer: 2500 VAC, 1minute)	
Insulation resistance	100MΩ or more (500VDC megger)		
Rated impulse dielectric strength	6kV	–	6kV
Conditional short-circuit current	1000A		–
Short-circuit protective device	Fuse 15A (recommended, not supplied)	Fuse 1A (recommended, not supplied)	–
Pollution degree	3		
Vibration	Resonance: 10 to 55Hz, double amplitude 0.1 mm* / Constant: 16.7 Hz, double amplitude 3mm		
Shock	Malfunction durability: 100 m/s² ** /	Mechanical durability: 500 m/s²	Mechanical durability: 500 m/s²
Ambient temperature (no condensation or no icing)	-20 to +70°C [-4 to +158°F] Illuminated type: -20 to -50°C [-4 to -58°F]	-5 to +60°C [+23 to +140°F]	-2 to +50°C [-4 to +122°F]
Temperature ratings	Storage: -40 to +80°C [-40 to +176°F]		
Humidity	45 to 85% RH (within -5° to +40°C)		
Degree of protection	IP65		
Initial contact resistance	≤ 50mΩ	–	–
Terminal markings	IEC 60445	–	–
Connections	AWG 18 to AWG 14; Stripping length: 8mm to 11mm / Tightening torque: 0.8 to 1.0 N·m, 7.1 in·lb to 8.8 in·lb		
Contacts operation	Self-cleaning types. Slow action. Positive opening.		
Operation frequency	1,200 cycle/hour (Application ratio 40%)	–	–
Utilization category/contact ratings	AC-15: 24VAC at 6A, 110VAC at 6A DC-13: 24VDC at 4A, 110VDC at 1.3 A	AC-1: 110VAC at 0.3 A DC-13: 24VDC at 0.7 A, 110VDC at 0.15 A	–
Rated insulation voltage	600V AC/DC***	250V AC/DC	250V AC/DC (w/transformer 600VAC)
Materials	Enclosure: Polyamide / Contacts: silver, nickel		
Standards	UL 508, CSA C22.2, No.14, TUV - EN60947-5-1		
Approvals	UL file E44592, CSA file LR20479		

* Emergency stop type: 10 to 500 Hz, double amplitude 0.7mm(acceleration 50m/s²), according to test condition of EN60947-5-5 (1998)

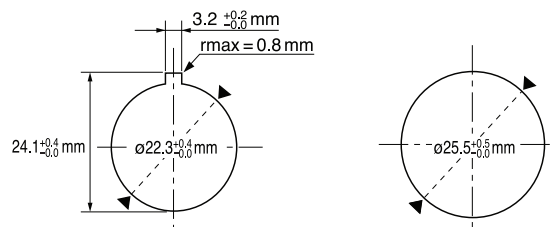
** Emergency stop type: 150 m/s² ***Illuminated type without transformer

Mechanical Durability		
		Operations
Pushbutton switch	Momentary action	5 million
Illuminated pushbutton switch	Alternate action	1 million
E-stop pushbutton switch	Push-lock, turn-reset	100,000
E-stop illuminated pushbutton	Push-lock, pull-reset	30,000
Selector switch	Maintained 1, 2, 3, 4-contact	1 million
	Maintained 5, 6-contact	500,000
	Spring return, spring/manual return	200,000
Illuminated selector switch	Maintained	
	Without transformer 1, 2, 3-contact	1 million
	4-contact	500,000
	With transformer 1, 2-contact	1 million
	3-contact	500,000
	Spring return, spring/manual return	200,000

Note: Key insertion/removal durability for selector switch key types • Key type 10,000

22mm Pilot Devices Cutouts

AR22 pilot devices can be mounted in either 22.3 or 25.5 mm diameter holes as shown in the figure below without any extra adapter.



Note: If key washer or legend plate is not used, 3.2 mm-wide location holes do not need to be cut out.