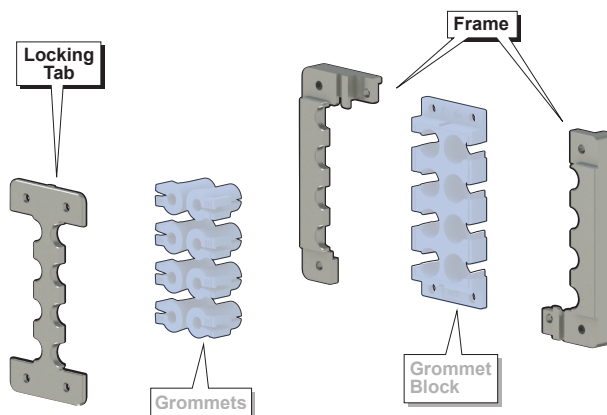


# Cable Entry System



## Cable Entry Frames KDL/H-VA-FDA Series

The KDL/H-VA-FDA cable entry system is a frame plus grommet system that allows a cable to be installed through an enclosure or other bulkhead surfaces, with the added benefit that pre-made, terminated cables can be installed without disassembling the connectors. The KDL/H-VA FDA frames are made of stainless steel in conjunction with the grommet blocks and grommets made of TPE with FDA compliant material specially modified for Murrplastik to enable the use in the food and pharmaceutical industries. The robust frame design gives better mechanical stability while achieving a high degree of environmental protection.



## Features

- 2-piece or 3-piece frame
- Easy assembly
- High packing density for up to 12 cables
- Integrated strain relief
- Suitable for standard cut-outs for 24-pin and 16-pin industrial connectors
- Operating temperature: -40 to 176°F [-40 to 80°C]
- Halogen free
- Matching grommet: KDT/X-FDA (purchase separately)
- FDA compliant per FDA 21 CFR
- Protection class IP69K
- 2-year warranty



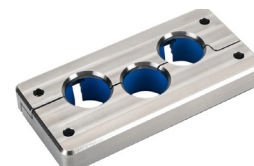
**591000**



**591003**



**591006**

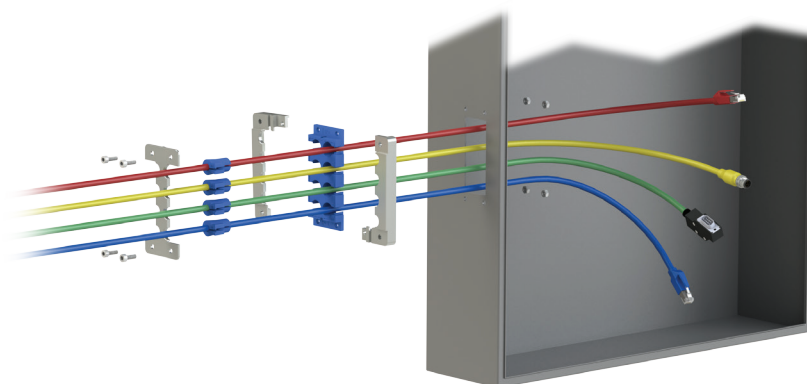


**591009**



**591012**

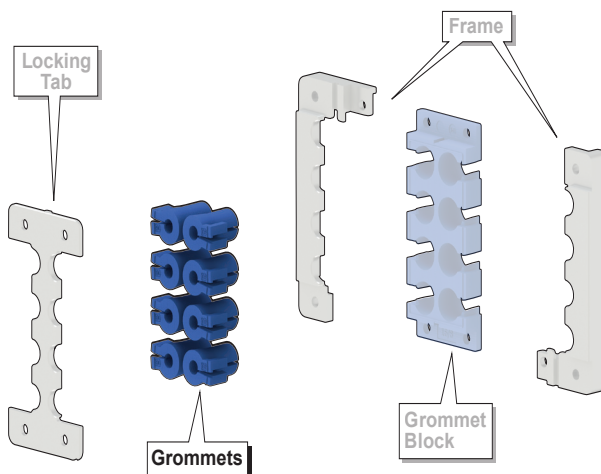
Cable Entry Frames - KDL/H-VA-FDA Series							
Part Number	Price	Qty	Number Of Openings	Type	Drawing Link	Requires (purchase separately)	Material
<b>Frame Size 24</b>							Frame: Stainless Steel  Grommet Block: FDA Compliant TPE (Thermoplastic Elastomer)
<a href="#">591000</a>	\$461.00	1	(12) small	KDL/H-VA-FDA 24/12	<a href="#">PDF</a>	(12) Murrplastik KDT/X-FDA series small grommets	
<a href="#">591003</a>	\$393.00	1	(4) medium	KDL/H-VA-FDA 24/4	<a href="#">PDF</a>	(4) Murrplastik KDT/X-FDA series medium grommets	
<b>Frame Size 16</b>							
<a href="#">591006</a>	\$434.00	1	(8) small	KDL/H-VA-FDA 16/8	<a href="#">PDF</a>	(8) Murrplastik KDT/X-FDA series small grommets	
<a href="#">591009</a>	\$389.00	1	(3) medium	KDL/H-VA-FDA 16/3	<a href="#">PDF</a>	(3) Murrplastik KDT/X-FDA series medium grommets	
<b>Frame Size 112 x 17 mm</b>							
<a href="#">591012</a>	\$329.00	1	(6) small	KDL/H-VA-FDA 1/6	<a href="#">PDF</a>	(6) Murrplastik KDT/X-FDA series small grommets	



Note: Mounting Hardware not included.

## Grommets - KDT/X FDA Series

The KDT/X FDA series grommets are perfect for cable entries of round cables. The small grommets can accept cable diameters between 0.08 to 0.47 inches (2 to 12 mm). The medium grommets can accept cable diameters between 0.47 to 0.87 inches (12 to 22 mm). A blank grommet is also available for any unused small or medium openings in the grommet block.



Grommets - KDT/X FDA Series							
Part Number	Price	Qty	For Use With Cable Ø mm [inches]	Number Of Openings	Type	Drawing Link	Material
<b>Small Grommets</b>							
<a href="#">592222</a>	\$11.00	4	2 to 3 [0.08 to 0.12]	1	KDT/X-FDA 02	<a href="#">PDF</a>	FDA compliant TPE (Thermoplastic Elastomer)
<a href="#">592224</a>	\$11.00	4	3 to 4 [0.12 to 0.16]		KDT/X-FDA 03	<a href="#">PDF</a>	
<a href="#">592226</a>	\$11.00	4	4 to 5 [0.16 to 0.20]		KDT/X-FDA 04	<a href="#">PDF</a>	
<a href="#">592228</a>	\$11.00	4	5 to 6 [0.20 to 0.24]		KDT/X-FDA 05	<a href="#">PDF</a>	
<a href="#">592230</a>	\$11.00	4	6 to 7 [0.24 to 0.28]		KDT/X-FDA 06	<a href="#">PDF</a>	
<a href="#">592232</a>	\$11.00	4	7 to 8 [0.28 to 0.31]		KDT/X-FDA 07	<a href="#">PDF</a>	
<a href="#">592234</a>	\$11.00	4	8 to 9 [0.31 to 0.35]		KDT/X-FDA 08	<a href="#">PDF</a>	
<a href="#">592236</a>	\$11.00	4	9 to 10 [0.35 to 0.39]		KDT/X-FDA 09	<a href="#">PDF</a>	
<a href="#">592238</a>	\$11.00	4	10 to 11 [0.39 to 0.43]		KDT/X-FDA 10	<a href="#">PDF</a>	
<a href="#">592240</a>	\$11.00	4	11 to 12 [0.43 to 0.47]		KDT/X-FDA 11	<a href="#">PDF</a>	
<a href="#">592262</a>	\$11.00	4	-		Blank	BTK/X-FDA	
<b>Medium Grommets</b>							
<a href="#">592242</a>	\$16.00	4	12 to 13 [0.47 to 0.51]	1	KDT/X-FDA 12	<a href="#">PDF</a>	FDA compliant TPE (Thermoplastic Elastomer)
<a href="#">592244</a>	\$16.00	4	13 to 14 [0.51 to 0.55]		KDT/X-FDA 13	<a href="#">PDF</a>	
<a href="#">592246</a>	\$16.00	4	14 to 15 [0.55 to 0.59]		KDT/X-FDA 14	<a href="#">PDF</a>	
<a href="#">592248</a>	\$16.00	4	15 to 16 [0.59 to 0.63]		KDT/X-FDA 15	<a href="#">PDF</a>	
<a href="#">592250</a>	\$16.00	4	16 to 17 [0.63 to 0.67]		KDT/X-FDA 16	<a href="#">PDF</a>	
<a href="#">592252</a>	\$16.00	4	17 to 18 [0.67 to 0.71]		KDT/X-FDA 17	<a href="#">PDF</a>	
<a href="#">592254</a>	\$16.00	4	18 to 19 [0.71 to 0.75]		KDT/X-FDA 18	<a href="#">PDF</a>	
<a href="#">592256</a>	\$16.00	4	19 to 20 [0.75 to 0.79]		KDT/X-FDA 19	<a href="#">PDF</a>	
<a href="#">592258</a>	\$16.00	4	20 to 21 [0.79 to 0.83]		KDT/X-FDA 20	<a href="#">PDF</a>	
<a href="#">592260</a>	\$16.00	4	21 to 22 [0.83 to 0.87]		KDT/X-FDA 21	<a href="#">PDF</a>	
<a href="#">592264</a>	\$16.00	4	-		Blank	BTG/X-FDA	



## Cable Entry Frames KDP FDA Cablequick® Series

The KDP FDA Cablequick cable entry system allows for a high density of cables to pass through a small area of an enclosure or other bulkhead surfaces. The KDP FDA Cablequick frames are made of stainless steel in conjunction with an elastomer with FDA compliant material specially modified for Murrplastik to enable the use in the food and pharmaceutical industries. The robust frame design gives better mechanical stability while achieving a high degree of environmental protection. Integrated threaded bolts mean that no screws are visible from outside. Mounting hardware is included. The KDP FDA cablequick series enables quick and simple installation of up to 56 cables in a single frame.

## Features

- High stability
- Easy installation
- Operating temperature: -30 to 194°F [-30 to 90°C]
- Halogen free
- FDA compliant per FDA 21 CFR
- ECOLAB certified
- Protection class IP65
- 2-year warranty



Cable Entry Frames - KDP FDA Cablequick® Series						
Part Number	Price	Qty	Number Of Openings	Type	Drawing Link	Material
<i>Frame Size 132 x 82 mm</i>						
<a href="#">593001</a>	\$461.00	1	(18) 8 to 12mm	FDA cablequick® KDP 100/18	<a href="#">PDF</a>	Housing: Stainless Steel  Seal: FDA compliant EPDM [ethylene propylene diene monomer]
<a href="#">593003</a>	\$461.00	1	(24) 6 to 10.5 mm	FDA cablequick® KDP 100/24	<a href="#">PDF</a>	
<a href="#">593005</a>	\$461.00	1	(12) 3.5 to 6.2 mm (12) 6 to 10mm (6) 9 to 14mm	FDA cablequick® KDP 100/30	<a href="#">PDF</a>	
<a href="#">593007</a>	\$461.00	1	(40) 4.5 to 8.5 mm	FDA cablequick® KDP 100/40	<a href="#">PDF</a>	
<a href="#">593009</a>	\$461.00	1	(48) 3.5 to 6.2 mm (8) 6 to 10mm	FDA cablequick® KDP 100/56	<a href="#">PDF</a>	



[593001](#)



[593003](#)



[593005](#)



[593007](#)



[593009](#)

