

# FATH® T-Slotted Rail Accessories

## Slides and Rollers

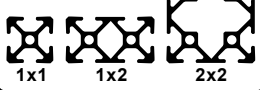





### 10 Series Slides and Rollers

Fits

Slot Size  
6

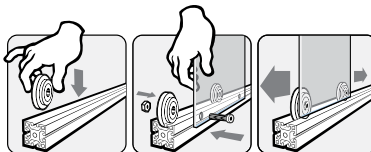
10 Series (inch)



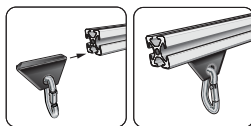
Part Number	Part Image	Price	Description	Fits	Pack Quantity	Material	Drawing Link
<a href="#"><u>151090</u></a>		\$7.25	Roller	All 10 Series	1	Glass-filled nylon	<a href="#"><u>PDF</u></a>
<a href="#"><u>151088</u></a>		\$4.50	Slider			Glass-filled nylon	<a href="#"><u>PDF</u></a>
<a href="#"><u>151089</u></a>		\$4.50	Snap Hook	Slider <a href="#"><u>151088</u></a>		Zinc plated steel	<a href="#"><u>PDF</u></a>

### Slides and Rollers Installation

#### Roller



#### Slider and Snap Hook



# FATH® T-Slotted Rail Accessories

## Slides and Rollers

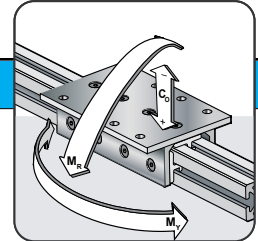
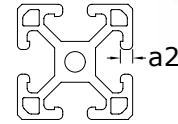
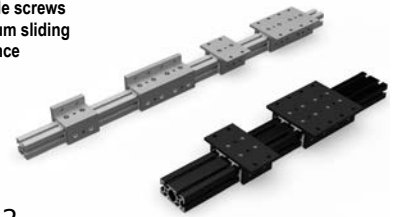
### Linear Bearings

- No Shimming required!
- Verified fit with SureFrame 15 & 40 Series
- Static Load rating (Co) up to 4,000 N (900 lbf)
- Single and Double Flange Styles
- Available in Black or Silver
- Optional Brake Assemblies

**Note:** Not all Slot size 8 profiles are made the same, so it is important to confirm that the "a2" dimension of the profile is 3.0-4.5mm for adequate engagement and ultimate slide performance.

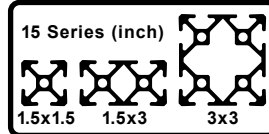














Adjust side screws  
for optimum sliding  
performance



## 15 Series Slides and Rollers

Fits  
Slot Size  
8



Part Number	Part Image	Price	Description	Fits	Pack Quantity	Load Ratings				Material	Drawing Link					
						Static (Co) N[lbf]	Reverse Static (-Co) N[lbf]	Roll Moment (Mr) N-m[lbf-ft]	Yaw Moment (My) N-m[lbf-ft]							
<a href="#">166337</a>		\$60.00	3-slot, double flange, short linear bearing	1.5 x 1.5 in, 1.5 x 3in,	1	1000 [225]	500 [112]	40 [29]	150 [111]	Aluminum/ die-cast zinc/ polyoxymethylene (POM)	<a href="#">PDF</a>					
<a href="#">166338</a>		\$60.00									<a href="#">PDF</a>					
<a href="#">166339</a>		\$120.00									<a href="#">PDF</a>					
<a href="#">166340</a>		\$130.00									<a href="#">PDF</a>					
<a href="#">166341</a>		\$80.00	4-slot, double flange, short linear bearing	1.5 x 3in, 3 x 3in		2000 [450]	1000 [225]	80 [59]	200 [147]		<a href="#">PDF</a>					
<a href="#">166342</a>		\$80.00									<a href="#">PDF</a>					
<a href="#">166343</a>		\$150.00	4-slot, double flange, long linear bearing					1.5 x 1.5 in, 1.5 x 3in,	2000 [889]		2000 [450]	100 [74]	200 [147]	<a href="#">PDF</a>		
<a href="#">166344</a>		\$160.00												<a href="#">PDF</a>		
<a href="#">166345</a>		\$60.00	3-slot, single flange, short linear bearing	1.5 x 1.5 in, 1.5 x 3in,		1000 [225]	500 [112]							40 [29]	150 [111]	<a href="#">PDF</a>
<a href="#">166346</a>		\$60.00														<a href="#">PDF</a>
<a href="#">166347</a>		\$120.00	3-slot, single flange, long linear bearing					2000 [450]	1000 [225]		80 [59]	200 [147]	<a href="#">PDF</a>			
<a href="#">166348</a>		\$120.00											<a href="#">PDF</a>			

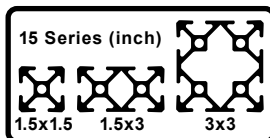
# FATH® T-Slotted Rail Accessories

## Slides and Rollers - Continued



### 15 Series Slides and Rollers - Cont'd

Fits

Slot Size  
8

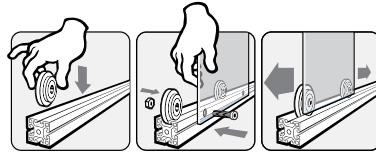
Part Number	Part Image	Price	Description	Fits	Pack Quantity	Recommended Screw Fastener T-Slot Attachment <b>2</b>	Material	Drawing Link		
<a href="#">166349</a>		\$45.00	Cam Lever Brake	All 15 Series Linear Bearings	1	n/a	Plastic/steel	<a href="#">PDF</a>		
<a href="#">166350</a>		\$28.00	L-Handle Brake					<a href="#">PDF</a>		
<a href="#">151168</a>		\$18.00	Slider	n/a		Fasteners included	Rubber/plastic/ steel	<a href="#">PDF</a>		
<a href="#">151169</a>		\$36.00	Slider With Clamp Lever					<a href="#">PDF</a>		
<a href="#">148974</a>		\$9.50	Roller					n/a	Nylon	<a href="#">PDF</a>
<a href="#">151166</a>		\$4.50	Slider							Glass-filled nylon
<a href="#">151089</a>		\$4.50	Snap Hook	Slider <a href="#">151166</a>		Fasteners included	Zinc plated steel	<a href="#">PDF</a>		
<a href="#">163020</a>		\$13.75	Roller Element With Guide	All 15 Series			Thermoplastic polyurethane/ nylon/steel	<a href="#">PDF</a>		
<a href="#">163021</a>		\$14.50	Roller Element Without Guide					<a href="#">PDF</a>		

# FATH® T-Slotted Rail Accessories

## Slides and Rollers - Continued

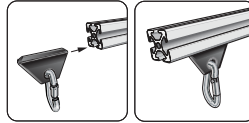
### Slides and Rollers Installation

#### Roller

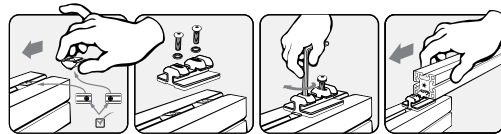


Bolt and nut not included  
and not available from  
AutomationDirect

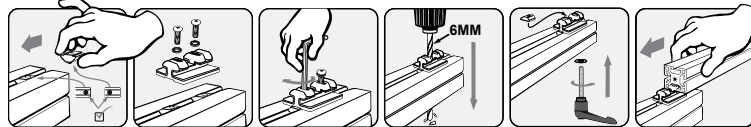
#### Slider and Snap Hook



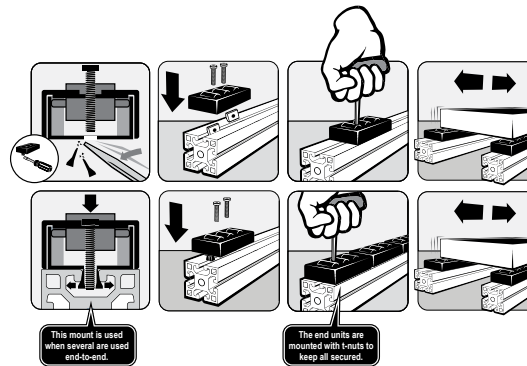
#### Slider



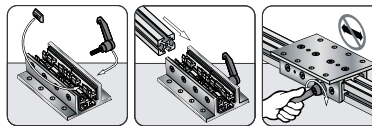
#### Slider with Clamp Lever



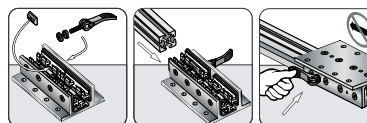
#### Roller Element



#### L-Handle Brake



#### Cam Lever Brake



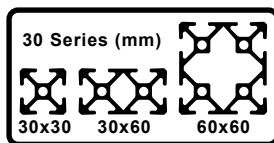
# FATH® T-Slotted Rail Accessories

## Slides and Rollers



### 30 Series Slides and Rollers

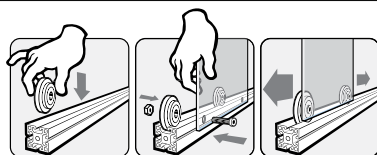
Fits Slot Size 8



Part Number	Part Image	Price	Description	Fits	Pack Quantity	Material	Drawing Link
<a href="#"><u>148974</u></a>		\$9.50	Roller	All 30 Series	1	Nylon	<a href="#"><u>PDF</u></a>
<a href="#"><u>151211</u></a>		\$4.50	Slider			Glass-filled nylon	<a href="#"><u>PDF</u></a>
<a href="#"><u>151089</u></a>		\$4.50	Snap Hook	Slider <a href="#"><u>151211</u></a>		Zinc plated steel	<a href="#"><u>PDF</u></a>
<a href="#"><u>162968</u></a>		\$7.50	Profile Slider Center Slot	All 30 Series		Polyoxymethylene (POM)	<a href="#"><u>PDF</u></a>

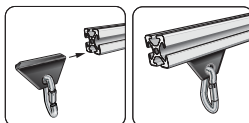
### Slides and Rollers Installation

#### Roller

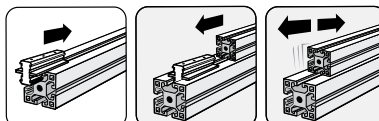


Bolt and nut not included  
and not available from  
AutomationDirect

#### Slider and Snap Hook



#### Profile Slider



# FATH® T-Slotted Rail Accessories

## Slides and Rollers

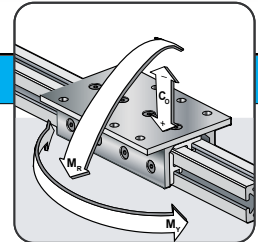
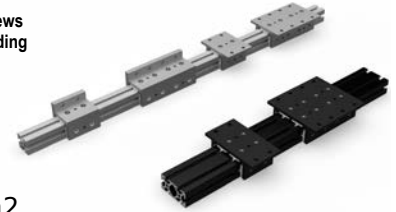
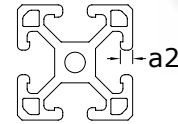
### Linear Bearings

- No Shimming required!
- Verified fit with SureFrame 15 & 40 Series
- Static Load rating (Co) up to 4,000 N (900 lbf)
- Single and Double Flange Styles
- Available in Black or Silver
- Optional Brake Assemblies

**Note:** Not all Slot size 8 profiles are made the same, so it is important to confirm that the "a2" dimension of the profile is 3.0-4.5mm for adequate engagement and ultimate slide performance.



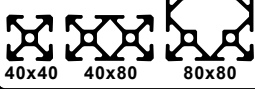
Adjust side screws  
for optimum sliding  
performance



## 40 Series Slides and Rollers

Fits Slot Size  
8

40 Series (mm)



Part Number	Part Image	Price	Description	Fits	Pack Quantity	Load Ratings				Material	Drawing Link					
						Static (Co) N[lbf]	Reverse Static (-Co) N[lbf]	Roll Moment (Mr) N-m[lbf-ft]	Yaw Moment (My) N-m[lbf-ft]							
<a href="#">166393</a>		\$60.00	3-slot, double flange, short linear bearing	40 x 40mm, 40 x 80mm	1	1000 [225]	500 [112]	40 [29]	150 [111]	Aluminum/ die-cast zinc/ polyoxymethylene (POM)	<a href="#">PDF</a>					
<a href="#">166394</a>		\$60.00									<a href="#">PDF</a>					
<a href="#">166395</a>		\$120.00	3-slot, double flange, long linear bearing			2000 [450]	1000 [225]	80 [59]	200 [147]		<a href="#">PDF</a>					
<a href="#">166396</a>		\$130.00									<a href="#">PDF</a>					
<a href="#">166397</a>		\$80.00	4-slot, double flange, short linear bearing	40 x 80mm, 80 x 80mm		4000 [889]	2000 [450]	100 [74]	200 [147]		50 [37]	150 [111]	<a href="#">PDF</a>			
<a href="#">166398</a>		\$80.00											<a href="#">PDF</a>			
<a href="#">166399</a>		\$150.00	4-slot, double flange, long linear bearing			2000 [450]	1000 [225]	80 [59]	200 [147]		200 [147]	100 [74]	150 [111]	<a href="#">PDF</a>		
<a href="#">166400</a>		\$160.00												<a href="#">PDF</a>		
<a href="#">166401</a>		\$60.00	3-slot, single flange, short linear bearing	40 x 40mm, 80 x 80mm		1	1000 [225]	500 [112]	40 [29]		150 [111]	Aluminum/ die-cast zinc/ polyoxymethylene (POM)	<a href="#">PDF</a>			
<a href="#">166402</a>		\$60.00											<a href="#">PDF</a>			
<a href="#">166403</a>		\$120.00	3-slot, single flange, long linear bearing				2000 [450]	1000 [225]	80 [59]		200 [147]		200 [147]	100 [74]	150 [111]	<a href="#">PDF</a>
<a href="#">166404</a>		\$120.00														<a href="#">PDF</a>

# FATH® T-Slotted Rail Accessories

## Slides and Rollers - Continued



### 40 Series Slides and Rollers - Cont'd

Fits



40 Series (mm)



40x40

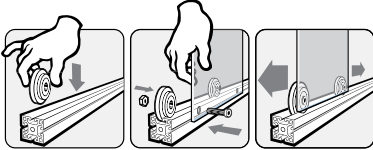
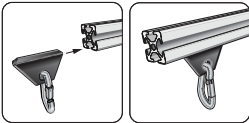
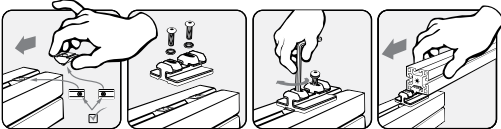
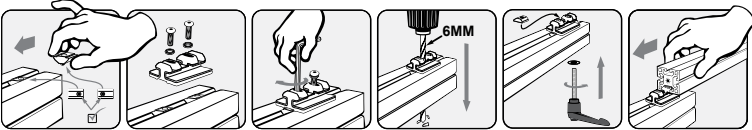
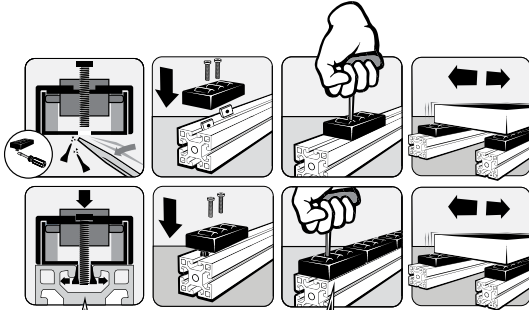
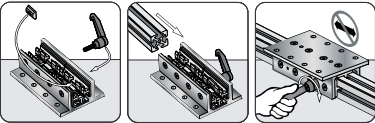
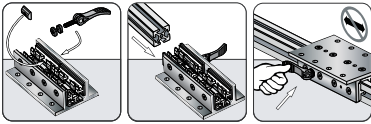
40x80

80x80

Part Number	Part Image	Price	Description	Fits	Pack Quantity	Recommended Screw Fastener T-Slot Attachment	Material	Drawing Link		
<a href="#">166349</a>		\$45.00	Cam Lever Brake	All 40 Series Linear Bearings	1	n/a	Plastic/steel	<a href="#">PDF</a>		
<a href="#">166350</a>		\$28.00	L-Handle Brake					<a href="#">PDF</a>		
<a href="#">151168</a>		\$18.00	Slider	n/a		Fasteners included	Rubber/plastic/steel	<a href="#">PDF</a>		
<a href="#">151169</a>		\$36.00	Slider With Clamp Lever					<a href="#">PDF</a>		
<a href="#">148974</a>		\$9.50	Roller					n/a	Nylon	<a href="#">PDF</a>
<a href="#">151166</a>		\$4.50	Slider							Glass-filled nylon
<a href="#">151089</a>		\$4.50	Snap Hook	Slider <a href="#">151166</a>		Zinc plated steel	<a href="#">PDF</a>			
<a href="#">163020</a>		\$13.75	Roller Element With Guide	All 40 Series		Fasteners included	Thermoplastic polyurethane/nylon/steel	<a href="#">PDF</a>		
<a href="#">163021</a>		\$14.50	Roller Element Without Guide					<a href="#">PDF</a>		

# FATH® T-Slotted Rail Accessories

## Slides and Rollers - Continued

Slides and Rollers Installation	
<b>Roller</b>	 <p>Bolt and nut not included and not available from AutomationDirect</p>
<b>Slider and Snap Hook</b>	
<b>Slider</b>	
<b>Slider with Clamp Lever</b>	
<b>Roller Element</b>	 <p>This mount is used when several are used end-to-end.</p> <p>The end units are mounted with T-nuts to keep all secured.</p>
<b>L-Handle Brake</b>	
<b>Cam Lever Brake</b>	



# FATH® T-Slotted Rail Accessories

## Slides and Rollers



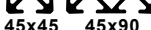
### 45 Series Slides and Rollers








Fits

Slot Size



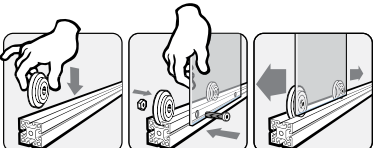
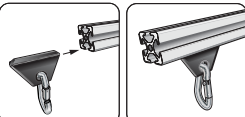
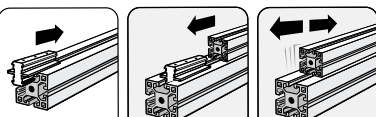
45 Series (mm)



Part Number	Part Image	Price	Description	Fits	Pack Quantity	Recommended Screw Fastener T-Slot Attachment	Material	Drawing Link
<a href="#">151274</a>		\$9.50	Roller	All 45 Series	1	n/a	Glass-filled nylon/ steel	<a href="#">PDF</a>
<a href="#">151273</a>		\$4.50	Slider					<a href="#">PDF</a>
<a href="#">151089</a>		\$4.50	Snap Hook	Slider <a href="#">151273</a>			Zinc plated steel	<a href="#">PDF</a>
<a href="#">162969</a>		\$7.75	Profile Slider Center Slot	All 45 Series			Polyoxymethylene (POM)	<a href="#">PDF</a>
<a href="#">162970</a>		\$8.00	Profile Slider Center Ridge			<a href="#">PDF</a>		
<a href="#">163022</a>		\$16.00	Roller Element With Guide			Fasteners included	Thermoplastic polyurethane/nylon/ steel	<a href="#">PDF</a>
<a href="#">163023</a>		\$16.50	Roller Element Without Guide	<a href="#">PDF</a>				

# FATH® T-Slotted Rail Accessories

## Slides and Rollers - Continued

Slides and Rollers Installation	
<b>Roller</b>	
<b>Slider and Snap Hook</b>	
<b>Profile Slider</b>	
<b>Roller Element</b>	