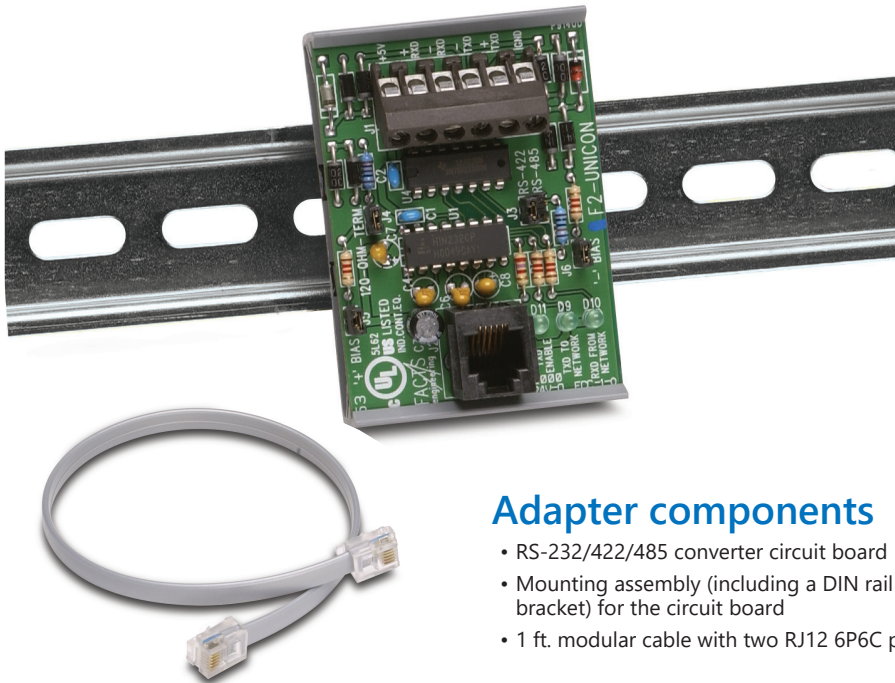


F2-UNICON Universal Converter



General specifications

- Max. network distance: 4000 feet
- Max. baud rate: 19.2 Kbaud
- Supply voltage: 5 VDC (from CPU)
- Max. driver load: 62 h
- Driver voltage: ±1.5V minimum
- No load current: 65 mA
- Max. current: 100 mA
- Operating temp: 60°C [140°F]
-

Example of system using F2-UNICON

- F2-UNICON converts the network master's (computer) RS-232 communications card signal levels to RS-422/485, which is suitable for a multi-drop network.
- F2-UNICON converts the RS-422/485 signal levels back to RS-232 for a connection to the [D2-262](#) CPU bottom port.
- F2-UNICON converts the RS-422/485 signal levels back to RS-232 for a connection to the [D2-262](#) CPU bottom port.
- F2-UNICON converts the RS-422/485 signal levels back to RS-232 for a connection to the DL05 port 2

Adapter components

- RS-232/422/485 converter circuit board
- Mounting assembly (including a DIN rail bracket) for the circuit board
- 1 ft. modular cable with two RJ12 6P6C plugs

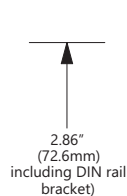
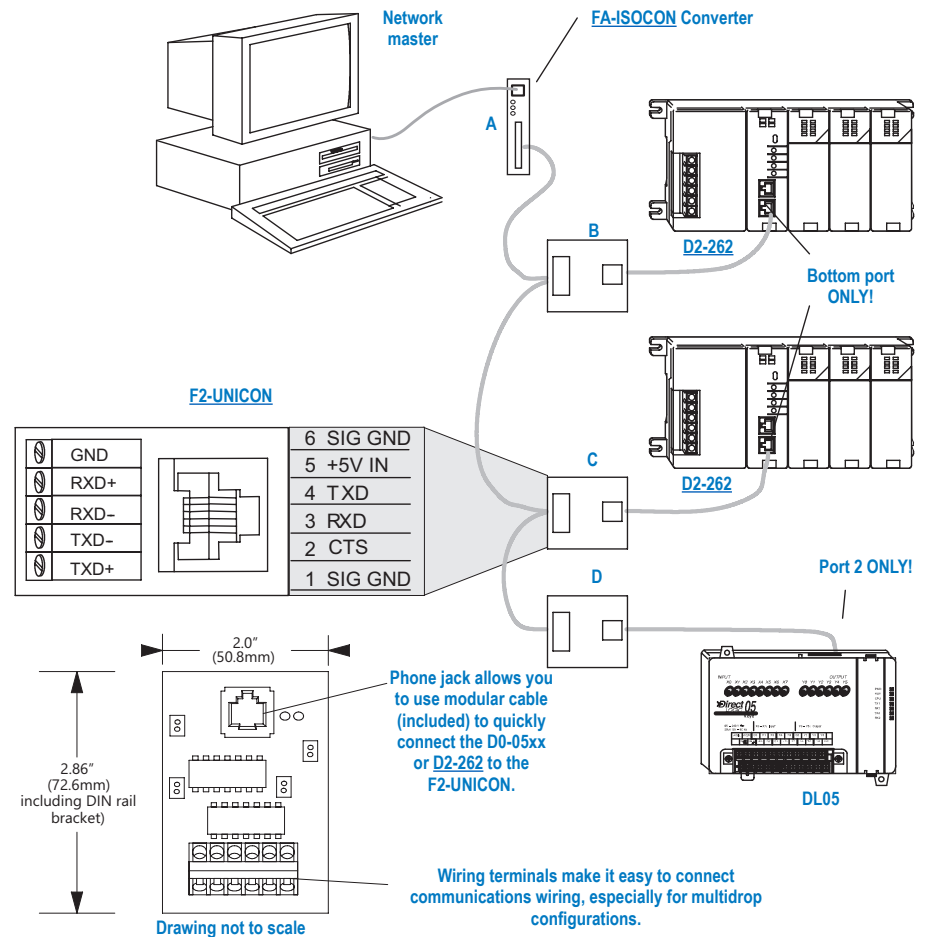
F2-UNICON \$123.00

The F2-UNICON Universal Converter converts RS-232 signal levels to RS-422 signal levels or RS-422 signal levels into RS-232 signals. The F2-UNICON does not offer the benefit of network isolation that the FA-ISOCOCON offers. The F2-UNICON has been specifically designed to be used with the DL05 and [D2-262](#) CPUs. It offers features such as:

- Easily mounts to DIN rail
- Does not require an external power source. It obtains power from the +5V pin on the [D2-262](#) CPU port (bottom port) and the DL05 (port 2).
- Has transmit and receive LEDs to simplify troubleshooting.

Installation is a "snap"

The F2-UNICON comes with a DIN rail housing for the circuit board. Simply snap the board into the housing and mount it on a DIN rail (or flush-mount it on a panel). Connect the communications wiring to the convenient terminal blocks, then connect the adapter to the CPU port with the cable.



Drawing not to scale

Phone jack allows you to use modular cable (included) to quickly connect the D0-05xx or D2-262 to the F2-UNICON.

Wiring terminals make it easy to connect communications wiring, especially for multidrop configurations.