

# Extremely Fast-Acting Class T Fuses



EDISON TJN and TJS Class T fuses are extremely fast-acting fuses in a compact, space-saving size. These fuses are ideal as the main fuse protection for panel boards, load centers, meter stacks, and AC drives.

## TJN/S Features

- Extremely current limiting
- No intentional time delay; opens quickly on overload
- Silver link construction provides superior component protection against fault currents
- Space saving dimensions

## Applications

- Recommended for protection of non-inductive loads such as lighting and resistance-heating circuits
- Use to protect lower interrupting-rated circuit breakers when series rated with Class T fuses
- For motor protection, size at 300% FLC; provides short-circuit protection only
- Use for short-circuit protection of AC drives

## Specifications

Voltage Rating:

TJN: 300 VAC  
TJS: 600 VAC

Ampere Ratings:

1–600 Amps

Interrupting Rating:

200,000 RMS Symmetrical Amps

Self-Certified Voltage Ratings (DC)

(15–600): 160 VDC  
TJS (15–400): 300 VDC

Self-Certified Interrupting

Ratings (DC):

TJN (15–600): 20,000 Amps DC  
TJS (15–400): 10,000 Amps DC

Current Limiting: Class T Fuse

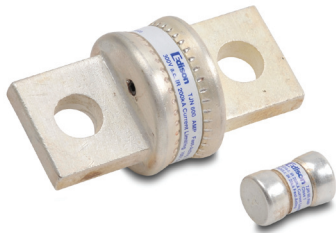
## Agency Approvals

- UL Listed, Class T, Guide JDDZ, File E162363
- CSA Certified HRCI-T per C22.2, No. 248.12

T Series 300VAC Extremely Fast-Acting Fuses					
Part Number	AMP Rating	Rated Voltage	Pcs/Pkg	Package Weight	Price
<a href="#">TJN1</a>	1	300 VAC	10	0.12 lb	\$182.00
<a href="#">TJN1-1</a>			1	0.02 lb	\$23.50
<a href="#">TJN3</a>	3		10	0.12 lb	\$182.00
<a href="#">TJN3-1</a>			1	0.02 lb	\$23.50
<a href="#">TJN6</a>	6		10	0.12 lb	\$182.00
<a href="#">TJN6-1</a>			1	0.02 lb	\$23.50
<a href="#">TJN10</a>	10		10	0.12 lb	\$223.00
<a href="#">TJN10-1</a>			1	0.02 lb	\$27.50
<a href="#">TJN15</a>	15		10	0.12 lb	\$242.00
<a href="#">TJN15-1</a>			1	0.02 lb	\$30.50
<a href="#">TJN20</a>	20		10	0.12 lb	\$242.00
<a href="#">TJN20-1</a>			1	0.02 lb	\$30.00
<a href="#">TJN25</a>	25	10	0.12 lb	\$232.00	
<a href="#">TJN25-1</a>		1	0.02 lb	\$30.00	
<a href="#">TJN30</a>	30	10	0.12 lb	\$242.00	
<a href="#">TJN30-1</a>		1	0.02 lb	\$30.50	
<a href="#">TJN35</a>	35	10	0.23 lb	\$251.00	
<a href="#">TJN35-1</a>		1	0.03 lb	\$30.50	
<a href="#">TJN40</a>	40	10	0.23 lb	\$253.00	
<a href="#">TJN40-1</a>		1	0.03 lb	\$30.50	
<a href="#">TJN45</a>	45	10	0.23 lb	\$251.00	
<a href="#">TJN45-1</a>		1	0.03 lb	\$30.50	
<a href="#">TJN50</a>	50	10	0.23 lb	\$251.00	
<a href="#">TJN50-1</a>		1	0.03 lb	\$30.50	
<a href="#">TJN60</a>	60	10	0.23 lb	\$241.00	
<a href="#">TJN60-1</a>		1	0.03 lb	\$30.50	
<a href="#">TJN70</a>	70	5	0.36 lb	\$142.00	
<a href="#">TJN70-1</a>		1	0.11 lb	\$33.50	
<a href="#">TJN80</a>	80	5	0.36 lb	\$151.00	
<a href="#">TJN80-1</a>		1	0.11 lb	\$37.50	
<a href="#">TJN90</a>	90	5	0.36 lb	\$151.00	
<a href="#">TJN90-1</a>		1	0.11 lb	\$37.50	
<a href="#">TJN100</a>	100	5	0.36 lb	\$141.00	
<a href="#">TJN100-1</a>		1	0.11 lb	\$33.50	
<a href="#">TJN110</a>	110	1	0.14 lb	\$42.50	
<a href="#">TJN125</a>	125	1		\$42.50	
<a href="#">TJN150</a>	150	1		\$47.00	
<a href="#">TJN175</a>	175	1		\$47.00	
<a href="#">TJN200</a>	200	1	\$47.00		
<a href="#">TJN225</a>	225	1	0.25 lb	\$108.00	
<a href="#">TJN250</a>	250	1		\$108.00	
<a href="#">TJN300</a>	300	1		\$108.00	
<a href="#">TJN350</a>	350	1		\$94.00	
<a href="#">TJN400</a>	400	1	\$85.00		
<a href="#">TJN450</a>	450	1	0.44 lb	\$124.00	
<a href="#">TJN500</a>	500	1		\$138.00	
<a href="#">TJN600</a>	600	1		\$138.00	

T Series 600VAC Extremely Fast-Acting Fuses					
Part Number	AMP Rating	Rated Voltage	Pcs/Pkg	Package Weight	Price
<a href="#">TJS1</a>	1	600 VAC	10	0.33 lb	\$176.00
<a href="#">TJS1-1</a>			1	0.02 lb	\$18.50
<a href="#">TJS3</a>	3		10	0.33 lb	\$176.00
<a href="#">TJS3-1</a>			1	0.02 lb	\$18.50
<a href="#">TJS6</a>	6		10	0.33 lb	\$176.00
<a href="#">TJS6-1</a>			1	0.02 lb	\$18.50
<a href="#">TJS10</a>	10		10	0.33 lb	\$200.00
<a href="#">TJS10-1</a>			1	0.02 lb	\$23.00
<a href="#">TJS15</a>	15		10	0.33 lb	\$201.00
<a href="#">TJS15-1</a>			1	0.02 lb	\$23.00
<a href="#">TJS20</a>	20		10	0.33 lb	\$200.00
<a href="#">TJS20-1</a>			1	0.02 lb	\$23.50
<a href="#">TJS25</a>	25	10	0.33 lb	\$201.00	
<a href="#">TJS25-1</a>		1	0.02 lb	\$23.00	
<a href="#">TJS30</a>	30	10	0.33 lb	\$188.00	
<a href="#">TJS30-1</a>		1	0.02 lb	\$21.50	
<a href="#">TJS35</a>	35	10	0.82 lb	\$280.00	
<a href="#">TJS35-1</a>		1	0.03 lb	\$30.00	
<a href="#">TJS40</a>	40	10	0.82 lb	\$307.00	
<a href="#">TJS40-1</a>		1	0.03 lb	\$33.50	
<a href="#">TJS45</a>	45	10	0.82 lb	\$323.00	
<a href="#">TJS45-1</a>		1	0.03 lb	\$36.50	
<a href="#">TJS50</a>	50	10	0.82 lb	\$284.00	
<a href="#">TJS50-1</a>		1	0.03 lb	\$31.00	
<a href="#">TJS60</a>	60	10	0.82 lb	\$281.00	
<a href="#">TJS60-1</a>		1	0.03 lb	\$29.50	
<a href="#">TJS70</a>	70	5	0.51 lb	\$205.00	
<a href="#">TJS70-1</a>		1	0.11 lb	\$45.00	
<a href="#">TJS80</a>	80	5	0.51 lb	\$231.00	
<a href="#">TJS80-1</a>		1	0.11 lb	\$52.00	
<a href="#">TJS90</a>	90	5	0.51 lb	\$259.00	
<a href="#">TJS90-1</a>		1	0.11 lb	\$55.00	
<a href="#">TJS100</a>	100	5	0.51 lb	\$231.00	
<a href="#">TJS100-1</a>		1	0.11 lb	\$52.00	
<a href="#">TJS110</a>	110	1	0.19 lb	\$54.00	
<a href="#">TJS125</a>	125	1		\$54.00	
<a href="#">TJS150</a>	150	1		\$54.00	
<a href="#">TJS175</a>	175	1		\$56.00	
<a href="#">TJS200</a>	200	1	\$56.00		
<a href="#">TJS225</a>	225	1	0.46 lb	\$137.00	
<a href="#">TJS250</a>	250	1		\$137.00	
<a href="#">TJS300</a>	300	1		\$154.00	
<a href="#">TJS350</a>	350	1		\$159.00	
<a href="#">TJS400</a>	400	1	\$163.00		
<a href="#">TJS450</a>	450	1	0.85 lb	\$322.00	
<a href="#">TJS500</a>	500	1		\$331.00	
<a href="#">TJS600</a>	600	1		\$360.00	

# Extremely Fast-Acting Class T Fuses



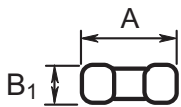
300V TJN Fuses



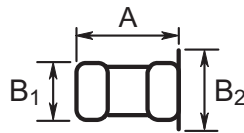
600V TJS Fuses

CROSS REFERENCE				
VOLTS	EDISON	BUSSMANN	MERSEN GOLD	LITTELFUSE
300	TJN	JJN	A3T	JLLN
600	TJS	JJS	A6T	JLLS

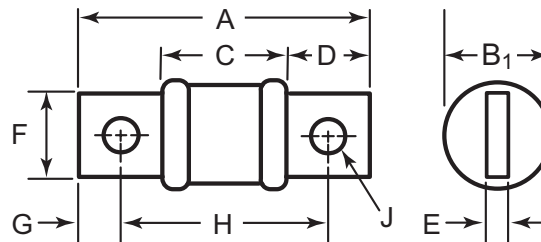
## TJN & TJS Fuse Dimensions



1A to 60A TJN  
1A to 30A TJS



35A to 60A TJS



70A to 600A

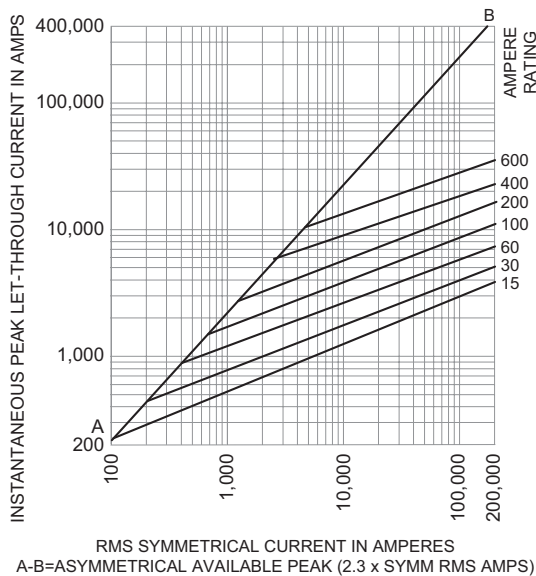
Fuse Type	Current Rating	Overall Length	Maximum Diameter		Barrel Length	Blade Length	Blade Thickness	Blade Width	Mounting Hole Spacing			
			B1	B2					G	H	J	
<i>(in [mm])</i>												
TJN (300 VAC)	Range	A	B1	B2	C	D	E	F	G	H	J	
	(A)	n/a (no blades)										
	1-30	0.88 [22.4]	0.41 [10.4]	n/a	0.84 [21.3]	0.66 [16.8]	0.125 [3.18]	0.75 [19.1]	0.27 [6.86]	1.56 [39.6]	0.284 [7.21]	
	35-60	2.16 [54.9]	0.56 [14.2]									
	70-100	2.44 [62.0]	0.82 [20.8]									
	110-200	2.75 [69.9]	1.06 [26.9]									
225-400	3.06 [77.7]	1.33 [33.8]										
450-600	3.06 [77.7]	1.60 [40.6]										
TJS (600 VAC)	1-30	1.50 [38.1]	0.56 [14.2]	n/a	1.64 [41.7]	0.66 [16.8]	0.125 [3.18]	0.75 [19.1]	0.27 [6.86]	2.36 [59.9]	0.281 [7.14]	
	35-60	1.56 [39.6]	0.81 [20.6]									1.00 [25.4]
	70-100	2.95 [74.9]	0.82 [20.8]									
	110-200	3.25 [82.6]	1.07 [27.2]									
	225-400	3.63 [92.2]	1.60 [40.6]									
	450-600	3.98 [101]	2.08 [52.8]									

# Extremely Fast-Acting Class T Fuses

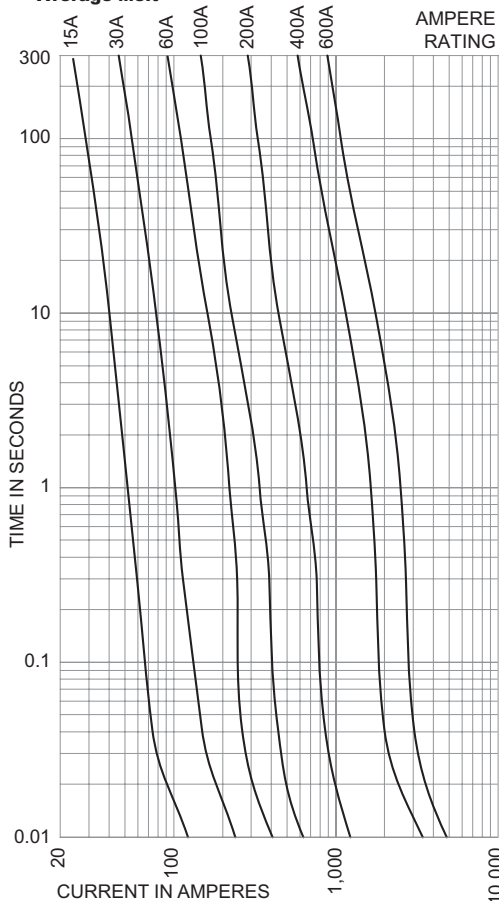


## TJN (300 VAC) Trip Curves

**Current Limitation Curves**

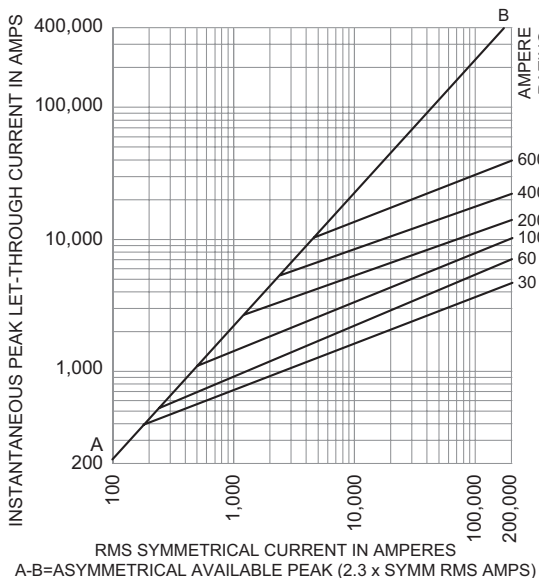


**TJS Time-Current Characteristic Curves - Average Melt**

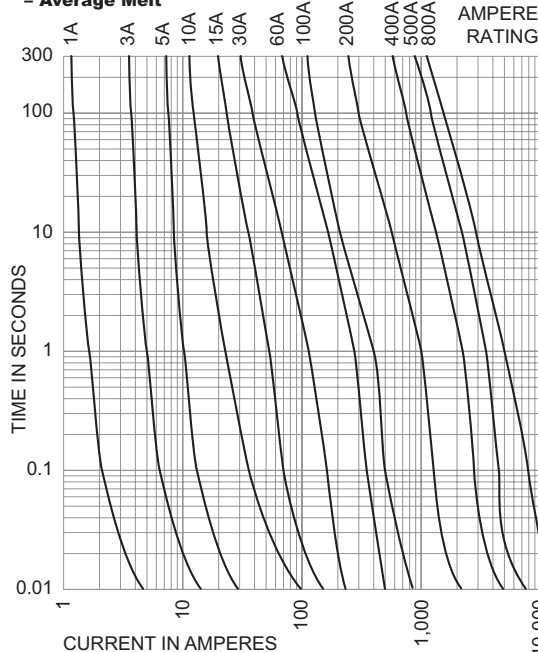


## TJS (600 VAC) Trip Curves

**Current Limitation Curves**



**TJS Time-Current Characteristic Curves - Average Melt**





# Selection Guide

## Line Overview

The Edison family of fuses, fuse blocks and fuse holders is divided into two classes:

1. Current Limiting: Class CC, Class J, Class L, Class RK, Class T
2. General Purpose: Class M Midget and Small Dimension

The fuse selection guide below is a general summary of the

specifications included for each fuse type. This selection guide does not include the many variables that can exist for specific situations such as local codes, unusual temperature, or other operating conditions. When selecting fuses, be sure to comply with any applicable PUBLIC SAFETY standards that apply to Overcurrent Protection Devices (OPD).

Edison Fuses Selection Guide and General Specifications												
Description	Current Limiting											
	Class J		Class RK5		Class RK1		Class T		Class L	Class CC		
Fuse Type	Fast-Acting	Time-Delay	Time-Delay				Extremely Fast-Acting	Fast-Acting	Fast-Acting	Time-Delay		
Part Number	JHL	JDL	ECNR	ECSR	LENRK	LESRK	TJN	TJS	LCU	HCLR	HCTR	EDCC
Voltage Rating	600VAC 450VDC	600VAC 300VDC*	250VAC 125 VDC* (1-200A) 250VDC* (201-600A)	600VAC 300VDC*	250VAC 125 VDC* (10-60A) 250VDC* (70-600A)	600VAC 300VDC*	300VAC 160 VDC (15-600A)	600VAC	600V	600VAC 300VDC (15-20A)	600VAC	600VAC 300VDC (0.5-2.25A) (20-30A)
Amp Rating	1 - 600		1 - 600	3 - 600	10 - 600	5 - 600	1 - 600		601 - 1200	0.5 - 30	0.25 - 30	0.5 - 30
Interrupting Rating	200,000 RMS Symmetrical Amps											
Current Limiting	Class J		Class RK5		Class RK1		Class T		Class L	Class CC		
Agency Approvals	UL Listed Class J Guide JDDZ File E162363 CSA Certified HRCI-J per C22.2, No. 248.8 File 700489 RoHS compliant	UL Listed Class J Guide JDDZ File E162363 CSA Certified HRCI-J per C22.2, No. 248.8 File 700489	UL Listed, Class RK, Guide JDDZ, File E162363 CSA Certified HRCI-R per C22.2, No. 248.12, File 700489 (LENRK CSA File 053787)				UL Listed, Class T, Guide JDDZ, File E162363 CSA Certified HRCI-T per C22.2, No. 248.12, File 53787, Class 1422-02 & 1422-82		UL Listed, Std. 248-10 CSA Certified, HRC-L C22.2 No. 248.10, Class 1422-02, File 53787	UL Listed to 248.4, Class CC, Guide JDDZ, File E162363, CSA certified HRCI-MISC per C22.2 No. 248.4, File 700489		
Dimensions	See product specification pages.									ferrule (in): 13/32, length (in): 1-1/2		

\* Self-certified DC ratings

Edison Fuses Selection Guide and General Specifications													
Description	General Purpose – Midget				General Purpose – Small Dimension Electronic								
	Fast-Acting		Time-Delay		Fast-Acting Ceramic	Fast-Acting Glass		Medium Time-Delay Glass	Time-Delay Ceramic	Time-Delay Glass	Fast-Acting Glass	Time-Delay Glass	
Part Number	MCL	MOL	MEQ	MEN	ABC	AGC	GMA	GMC	MDA	MDL	S500	S506	
Voltage Rating	600 VAC	250 VAC	500 VAC	250 VAC	250 VAC (0.5 to 30A) 125VDC: (0.5 to 30A)	250VAC: (0.1 to 10A) 32VAC: (15 to 30A)	250VAC (0.063 - 3A) 125VAC (4 - 15A)	250VAC (0.5 - 3A) 125VAC (4 - 10A)	250VAC 125VDC (20A)	250VAC: (0.0625 to 8A) 32VAC: (10 to 20A)	250VAC	250VAC	
Amp Rating	0.5 to 50	0.5 to 30	0.25 to 30	0.5 to 30	0.5 to 30	0.10 to 30	0.063 to 15	0.5 to 10	0.5 to 20	0.0625 to 20	0.032 to 10	0.25 to 6.3	
Interrupting Rating	100,000 RMS Amps	10,000 RMS Amps				See specifications table on product pages							
Current Limiting	N/A				N/A								
Agency Approvals	UL Listed to 248.14, File E162443 CSA Cert. C22.2 Part 59.2, LR 700489				UL Listed standard 248-14 UL Listed Guide and File nos. (ABC 0.25-20 A): (AGC 1/100-10 A) JDYX and E19180 UL Recognition Guide and File nos. (ABC 20-30A):(AGC 11-30) JDYX2 and E19180 CSA Certification Record No: 053787 C 000 and Class No: 1422 01 and 1422 30	Designed to UL/CSA 248-14 UL Listed, Guide JDYX, File E19180 63mA-6A UL Recognition, Guide JDYX2, File E19180, 7A-15A CSA Certified, File 053787_C_000, 63mA-6A Class 1422-01		UL Listed standard 248-14 UL Listed Card: MDA 2/10-20A, MDL 1/16-8A (Guide JDYX, File E19180 UL Recognized Card: MDA 25-30A MDL 9-30A (Guide JDYX2, File E19180) CSA Certification Card: MDA 2/10-15A (Class No. 1422-01)		UL Recognized Guide JDYX2, File E19180 Semko Approval VDE Approval BSI Approval IMQ Approval RoHS compliant			
	RoHS												
Dimensions	ferrule (in): 13/32 length (in): 1-1/2				1/4" x 1-1/4", (6.3mm x 32mm)		0.197" x 0.788" (5mm x 20mm)		1/4" x 1-1/4", (6.3mm x 32mm)		0.197" x 0.788" (5mm x 20mm)		

# T300 & T600 Fuse Blocks for Class T Fuses



## Description

For use with Class T fuses

T300 series: for use with 300V Class T fuses (TJN)

T600 series: for use with 600V Class T fuses (TJS)

- Terminal type:
  - SR = Screw type; clip with re-inforcing spring
  - CR = Box lug type; clip with reinforcing spring
  - C = Box lug type; clip with reinforcing spring standard on FB rated 100A; spring not required above 100A for bolt-on fuses

## Specifications

Construction: Glass Polyester; Phenolic on 600V

UL Flammability: 94V-O

Ratings:

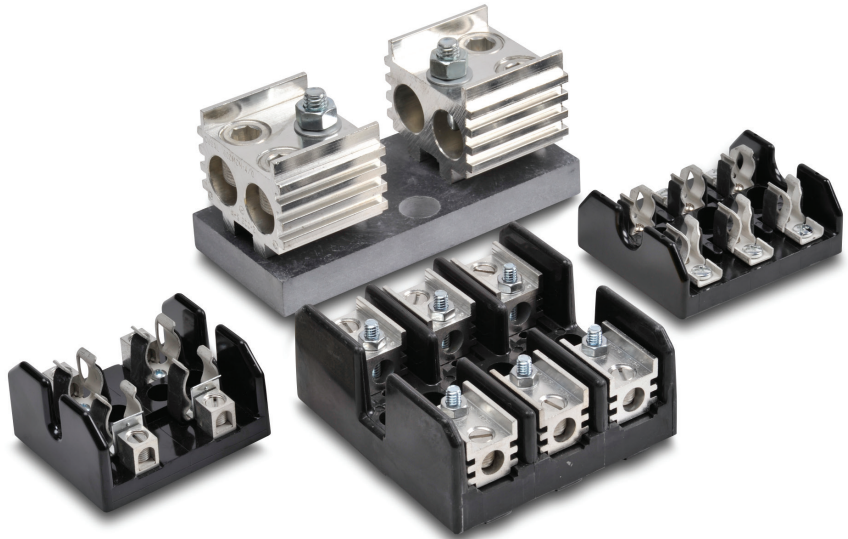
T300: 300 VAC; 30–600A

T600: 600 VAC; 30–600A

Short-circuit Current Rating:

200,000 RMS Symmetrical Amps

## Edison Class T Fuse Blocks



## Agency Approvals

- UL Listed, Guide IZLT, File E14853
- CSA, Class 6225-01, File 47235
- CE
- REACH
- RoHS

### Class T Fuse Blocks

Part Number	Volts	Amps	Poles	Terminal Type	Wire Range (AWG)	Fig #	Wt. (lb)	Pcs /Pkg	Price			
<a href="#">T30030-2SR</a>	300	0.5 to 30	2	screw	10–18 Cu (only)	1	0.3	1	\$35.50			
<a href="#">T30030-3SR</a>			3				0.4		\$35.00			
<a href="#">T30060-2CR</a>			31 to 60				2		2–14 Cu/Al	0.4	\$45.00	
<a href="#">T30060-3CR</a>		3		0.5	\$68.00							
<a href="#">T30100-1CR</a>		61 to 100	1	box lug	1/0–8 Cu/Al	4	0.6		Retired			
<a href="#">T30100-3CR</a>							3		1.5	Retired		
<a href="#">T30200-1C</a>			101 to 200				1		250 kcmil – 6 Cu/Al	5a	1.0	Retired
<a href="#">T30600-1C</a>			401 to 600				1		(2) 600 kcmil – 4/0 Cu/Al	7	2.4	Retired
<a href="#">T60030-1SR</a>	600		0.5 to 30				1	screw	10–18 Cu (only)	2	0.2	\$26.00
<a href="#">T60030-2SR</a>		2		0.3	\$46.50							
<a href="#">T60030-3SR</a>		3		0.5	\$41.00							
<a href="#">T60060-1CR</a>		31 to 60	1	2–14 Cu/Al	3	0.3	\$25.50					
<a href="#">T60060-2CR</a>			2			0.4	\$52.00					
<a href="#">T60060-3CR</a>			3			0.6	\$76.00					
<a href="#">T60100-1C</a>		61 to 100	1	box lug	2/0–14 Cu/Al	4	1.0	Retired				
<a href="#">T60100-3C</a>			3				1.5	Retired				
<a href="#">T60400-1C</a>		201 to 400	1	600 kcmil – 2/0 Cu/Al	6	1.3	Retired					
<a href="#">T60600-1C</a>		401 to 600	1	(2) 600 kcmil – 4/0 Cu/Al	7	2.6	Retired					



# T300 & T600 Fuse Blocks for Class T Fuses



## Fuse Block Terminal Torque Specifications

Terminal Tightening Torque Specs – Class T Fuse Blocks							
Part Number	Amps	Volts	Poles	Terminal Type	Wire Range (AWG)	Wire Torque (lb-in)	Fuse Torque (lb-in)
Tx0030-xSR	30	300, 600	1,2,3	screw	10–18 Cu (only)	20	n/a
Tx0060-xCR	60	300, 600	1,2,3	box lug	2–3	50	n/a
					4–6	45	
					8	40	
					10–14	35	
T30100-xCR	100	300	1,3		10–8 Cu/Al	100	n/a
T60100-xC	100	600	1,3		2/0–3	50	70
					4–6	45	
					8	40	
				10–14	35		
Tx0200-1C	200	300, 600	1	250 kcmil – 6 Cu/Al	375	132	
Tx0400-1C	400	300, 600	1	600 kcmil – 2/0 Cu/Al	500	192	
Tx0600-1C	600	300, 600	1	(2) 600 kcmil – 4/0 Cu/Al	450	380	

## Fuse Block Dimensions

Fig.1: 300V; 0.5–60A

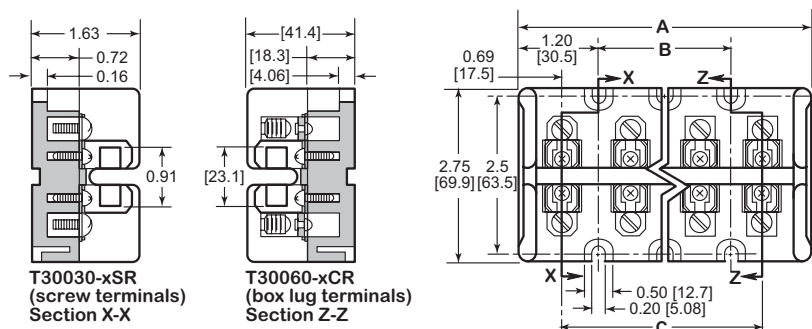


Figure 1: 300V 1/2A to 60A

Terminal Type	Dimensions (in [mm])		
	A	B	C
T30030-2SR T30060-2CR	2.41 [61.2]	–	1.03 [26.2]
T30030-3SR T30060-3CR	3.44 [87.4]	1.03 [26.2]	2.06 [52.3]

Fig.2: 600V; 0.5–30A

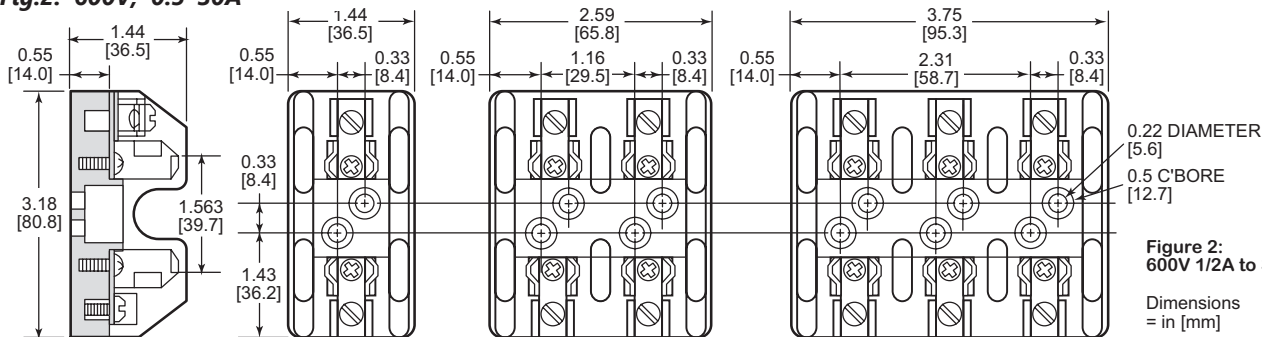


Figure 2: 600V 1/2A to 30A

Dimensions = in [mm]

Fig.3: 600V; 31–60A

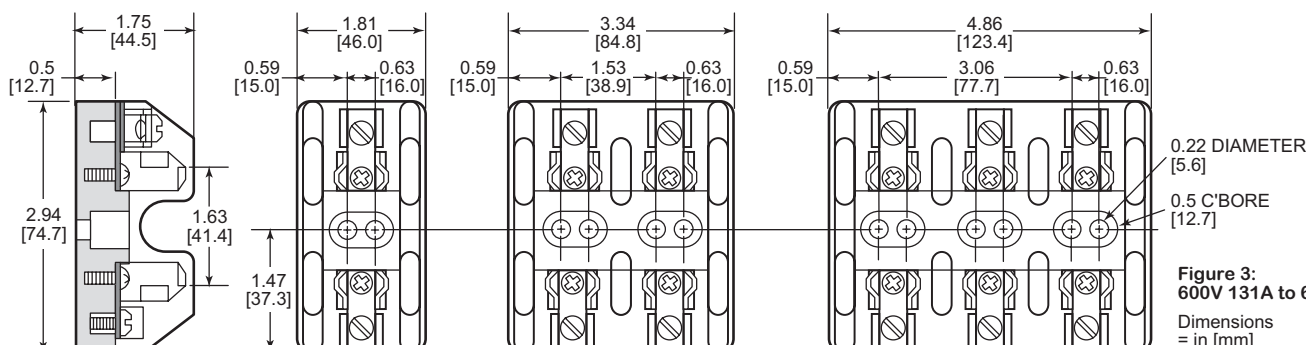


Figure 3: 600V 131A to 60A

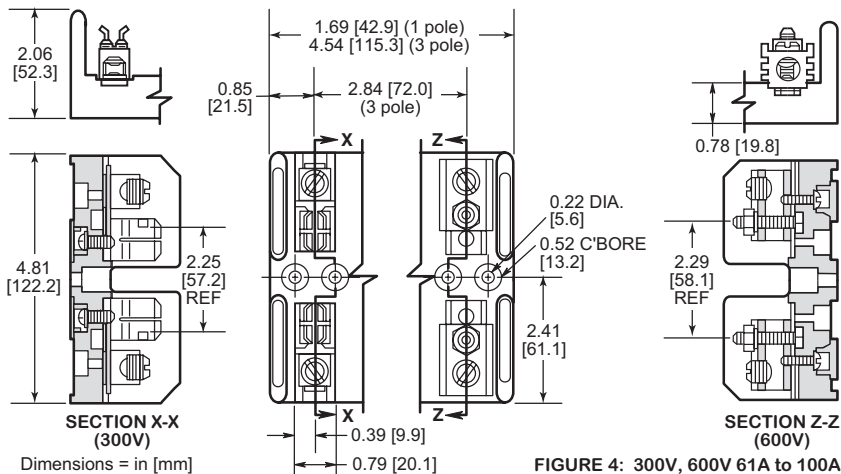
Dimensions = in [mm]

# T300 & T600 Fuse Blocks for Class T Fuses

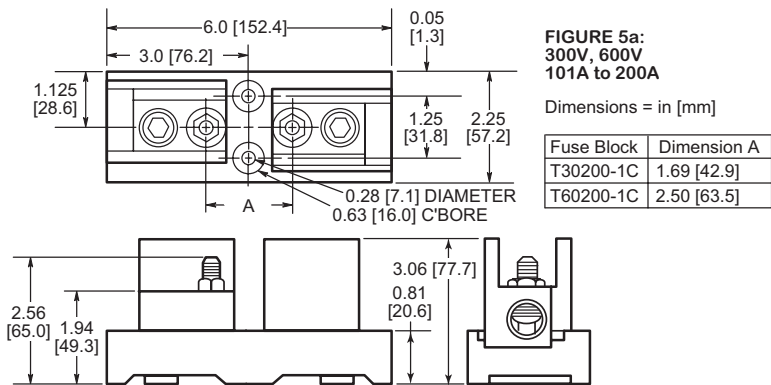


## Fuse Block Dimensions

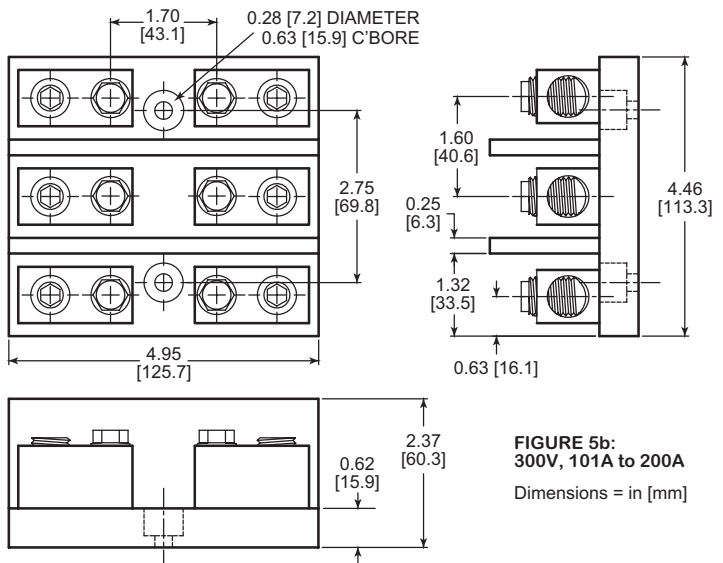
**Fig.4: 300V, 600V; 61-100A**



**Fig.5a: 300V, 600V; 101-200A**



**Fig.5b: 300V; 101-200A**

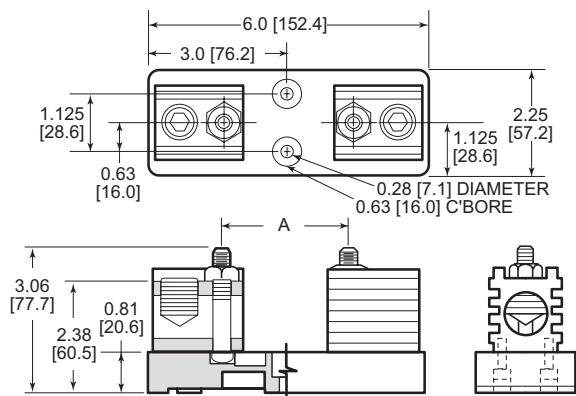


# T300 & T600 Fuse Blocks for Class T Fuses



## Fuse Block Dimensions

**Fig.6: 300V, 600V; 201-400A**

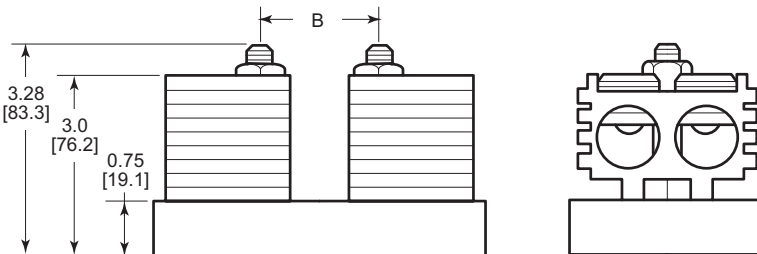
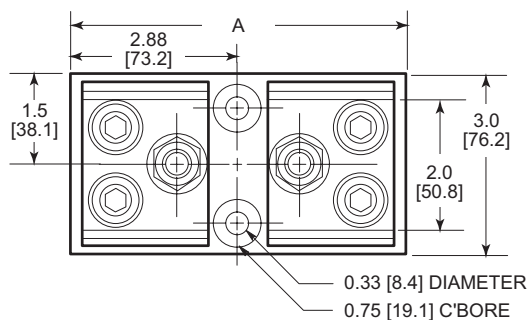


**FIGURE 6:**  
300V, 600V  
201A to 400A

Dimensions = in [mm]

Fuse Block	Dimension A
T30400-1C	1.84 [46.7]
T60400-1C	2.72 [69.1]

**Fig.7: 300V, 600V; 401-600A**



Dimensions = in [mm]

**FIGURE 7: 300V, 600V 401A to 600A**

Fuse Block	Dimensions ( in [mm] )	
	A	B
T30600-1C	5.75 [146]	2.03 [51.6]
T60600-1C	6.75 [171.4]	2.95 [74.9]



# Accessories

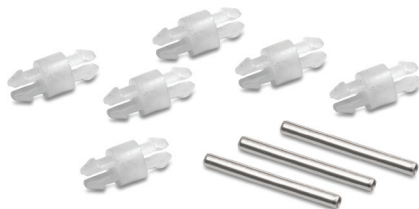


**FP-2**

Accessories			
Part Number	Description	Pcs/Pkg	Price
<b>FP-2</b>	Fuse puller for fuse dia. 13/32" - 13/16". Fuse type: 0-60A, 250V; 0-30A, 600V	1	\$34.50
<b>JV-L*</b> <i>(Not Field Installable)</i>	Multi-pole connection kit to connect new design multiple Class CC and Midget Class fuse holders together. Kit consists of 6 connectors and 3 handle pins to connect up to 4 fuse holders.		\$13.00

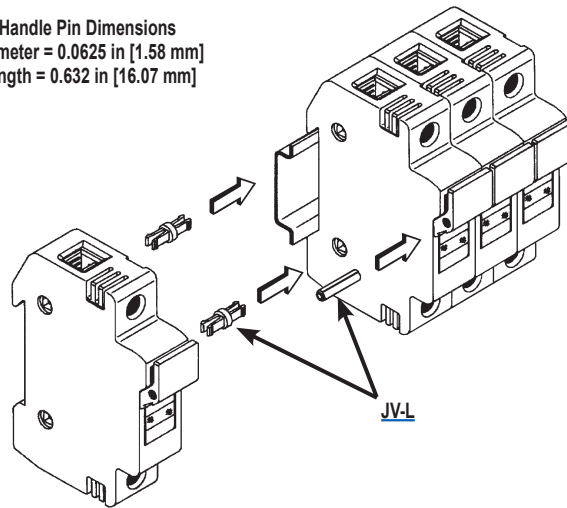
*Note: Will not work with retired design fuse holders shipped before November 1, 2009.*

*\*Roll pin punch or installation tool is required to install handle pins (Tool not sold by [AutomationDirect.com](http://AutomationDirect.com)).*



**JV-L**

Handle Pin Dimensions  
 Diameter = 0.0625 in [1.58 mm]  
 Length = 0.632 in [16.07 mm]



# Cross Reference Guide



## CROSS REFERENCE GUIDE By manufacturers type reference or series number. Ampere ratings must be added for ordering purposes.

FUSE TYPE		VOLT	EDISON	BRUSH/ DORMAN	BUSSMANN	MERSEN / GOULD	GEC/CEFCO	LITTELFUSE
<b>UL CLASS CURRENT LIMITING FUSES (CSA CLASS)</b>								
<b>CC (HRCI-CC)</b>	<i>Time-Delay</i>	600	EDCC	-	LP-CC	ATDR	-	CCMR
	<i>Time-Delay</i>	600	HCTR	-	FNQ-R	ATQR	-	KLDR
	<i>Fast-Acting</i>	600	HCLR	HCLR	KTK-R	ATMR	CTK-R	KLKR
<b>RK1</b>	<i>Time-Delay Dual Element</i>	250	LENRK	-	LPN-RK-SP	A2DR	-	LLNRK
		600	LESRK	-	LPS-RK-SP	A6DR	-	LLSRK
<b>RK5</b>	<i>Time-Delay Dual Element</i>	250	ECNR	-	FRN-R	TR	-	FLNR
		600	ECSR	-	FRS-R	TRS	-	FLSR
<b>J</b>	<i>Time-Delay Dual Element</i>	600	JDL	-	LPJ	AJT	-	JTD
	<i>High-Speed AC Drive</i>	600	JHL	-	DFJ	HSJ	-	-
<b>T</b>	<i>Extremely Fast-Acting</i>	300	TJN	-	JJN	A3T	-	JLLN
		600	TJS	-	JJS	A6T	-	JLLS
<b>UL CLASS GENERAL PURPOSE FUSES</b>								
<b>Midget</b>	<i>Fast-Acting</i>	600	MCL	MCL	KTK	ATM	CTK	KLK
		250	MOL	MOL	BAF/BAN	OTM	-	BLF
	<i>Time-Delay</i>	500	MEQ	MEQ	FNQ	ATQ	-	FLQ
		250	MEN	MEN	FNM	TRM	-	FLM
<b>1/4"x 1-1/4" Ceramic</b>	<i>Fast-Acting</i>	250/125	ABC	ABC	ABC	GAB	-	314
<b>1/4"x 1-1/4" Glass</b>		250/32	AGC	AGC	AGC	GGC	-	312
<b>1/4"x 1-1/4" Ceramic</b>	<i>Time-Delay</i>	250	MDA	MDA	MDA	-	-	326
<b>1/4"x 1-1/4" Glass</b>		250/32	MDL	MDL	MDL	GDL	-	313
<b>5x20 mm Glass</b>	<i>Fast-Acting</i>	250/125	GMA	GMA	GMA	GGM	-	235
	<i>Medium Time-Delay</i>	250/125	GMC	GMC	GMC	GSC	-	-
<b>5x20 mm Glass</b>	<i>Fast-Acting</i>	250	S500	BDB	GDB	GSB	-	217
	<i>Time-Delay</i>	250	S506	BDC	GDC	GDG	-	218
<b>Fuse Puller</b>								
<b>Fuse Puller FP-2</b>			old - 38072 new - FP-2	-	FP-2	-	-	-