

Extremely Fast-Acting Class T Fuses



EDISON TJN and TJS Class T fuses are extremely fast-acting fuses in a compact, space-saving size. These fuses are ideal as the main fuse protection for panel boards, load centers, meter stacks, and AC drives.

TJN/S Features

- Extremely current limiting
- No intentional time delay; opens quickly on overload
- Silver link construction provides superior component protection against fault currents
- Space saving dimensions

Applications

- Recommended for protection of non-inductive loads such as lighting and resistance-heating circuits
- Use to protect lower interrupting-rated circuit breakers when series rated with Class T fuses
- For motor protection, size at 300% FLC; provides short-circuit protection only
- Use for short-circuit protection of AC drives

Specifications

Voltage Rating:

TJN: 300 VAC
TJS: 600 VAC

Ampere Ratings:

1–600 Amps

Interrupting Rating:

200,000 RMS Symmetrical Amps

Self-Certified Voltage Ratings (DC)

(15–600): 160 VDC
TJS (15–400): 300 VDC

Self-Certified Interrupting

Ratings (DC):

TJN (15–600): 20,000 Amps DC
TJS (15–400): 10,000 Amps DC

Current Limiting: Class T Fuse

Agency Approvals

- UL Listed, Class T, Guide JDDZ, File E162363
- CSA Certified HRCI-T per C22.2, No. 248.12

| T Series 300VAC Extremely Fast-Acting Fuses | | | | | |
|--|------------|---------------|---------|----------------|----------|
| Part Number | AMP Rating | Rated Voltage | Pcs/Pkg | Package Weight | Price |
| TJN1 | 1 | 300 VAC | 10 | 0.12 lb | \$182.00 |
| TJN1-1 | | | 1 | 0.02 lb | \$23.50 |
| TJN3 | 3 | | 10 | 0.12 lb | \$182.00 |
| TJN3-1 | | | 1 | 0.02 lb | \$23.50 |
| TJN6 | 6 | | 10 | 0.12 lb | \$182.00 |
| TJN6-1 | | | 1 | 0.02 lb | \$23.50 |
| TJN10 | 10 | | 10 | 0.12 lb | \$223.00 |
| TJN10-1 | | | 1 | 0.02 lb | \$27.50 |
| TJN15 | 15 | | 10 | 0.12 lb | \$242.00 |
| TJN15-1 | | | 1 | 0.02 lb | \$30.50 |
| TJN20 | 20 | | 10 | 0.12 lb | \$242.00 |
| TJN20-1 | | | 1 | 0.02 lb | \$30.00 |
| TJN25 | 25 | 10 | 0.12 lb | \$232.00 | |
| TJN25-1 | | 1 | 0.02 lb | \$30.00 | |
| TJN30 | 30 | 10 | 0.12 lb | \$242.00 | |
| TJN30-1 | | 1 | 0.02 lb | \$30.50 | |
| TJN35 | 35 | 10 | 0.23 lb | \$251.00 | |
| TJN35-1 | | 1 | 0.03 lb | \$30.50 | |
| TJN40 | 40 | 10 | 0.23 lb | \$253.00 | |
| TJN40-1 | | 1 | 0.03 lb | \$30.50 | |
| TJN45 | 45 | 10 | 0.23 lb | \$251.00 | |
| TJN45-1 | | 1 | 0.03 lb | \$30.50 | |
| TJN50 | 50 | 10 | 0.23 lb | \$251.00 | |
| TJN50-1 | | 1 | 0.03 lb | \$30.50 | |
| TJN60 | 60 | 10 | 0.23 lb | \$241.00 | |
| TJN60-1 | | 1 | 0.03 lb | \$30.50 | |
| TJN70 | 70 | 5 | 0.36 lb | \$142.00 | |
| TJN70-1 | | 1 | 0.11 lb | \$33.50 | |
| TJN80 | 80 | 5 | 0.36 lb | \$151.00 | |
| TJN80-1 | | 1 | 0.11 lb | \$37.50 | |
| TJN90 | 90 | 5 | 0.36 lb | \$151.00 | |
| TJN90-1 | | 1 | 0.11 lb | \$37.50 | |
| TJN100 | 100 | 5 | 0.36 lb | \$141.00 | |
| TJN100-1 | | 1 | 0.11 lb | \$33.50 | |
| TJN110 | 110 | 1 | 0.14 lb | \$42.50 | |
| TJN125 | 125 | 1 | | \$42.50 | |
| TJN150 | 150 | 1 | | \$47.00 | |
| TJN175 | 175 | 1 | | \$47.00 | |
| TJN200 | 200 | 1 | \$47.00 | | |
| TJN225 | 225 | 1 | 0.25 lb | \$108.00 | |
| TJN250 | 250 | 1 | | \$108.00 | |
| TJN300 | 300 | 1 | | \$108.00 | |
| TJN350 | 350 | 1 | | \$94.00 | |
| TJN400 | 400 | 1 | \$85.00 | | |
| TJN450 | 450 | 1 | 0.44 lb | \$124.00 | |
| TJN500 | 500 | 1 | | \$138.00 | |
| TJN600 | 600 | 1 | | \$138.00 | |

| T Series 600VAC Extremely Fast-Acting Fuses | | | | | |
|--|------------|---------------|----------|----------------|----------|
| Part Number | AMP Rating | Rated Voltage | Pcs/Pkg | Package Weight | Price |
| TJS1 | 1 | 600 VAC | 10 | 0.33 lb | \$176.00 |
| TJS1-1 | | | 1 | 0.02 lb | \$18.50 |
| TJS3 | 3 | | 10 | 0.33 lb | \$176.00 |
| TJS3-1 | | | 1 | 0.02 lb | \$18.50 |
| TJS6 | 6 | | 10 | 0.33 lb | \$176.00 |
| TJS6-1 | | | 1 | 0.02 lb | \$18.50 |
| TJS10 | 10 | | 10 | 0.33 lb | \$200.00 |
| TJS10-1 | | | 1 | 0.02 lb | \$23.00 |
| TJS15 | 15 | | 10 | 0.33 lb | \$201.00 |
| TJS15-1 | | | 1 | 0.02 lb | \$23.00 |
| TJS20 | 20 | | 10 | 0.33 lb | \$200.00 |
| TJS20-1 | | | 1 | 0.02 lb | \$23.50 |
| TJS25 | 25 | 10 | 0.33 lb | \$201.00 | |
| TJS25-1 | | 1 | 0.02 lb | \$23.00 | |
| TJS30 | 30 | 10 | 0.33 lb | \$188.00 | |
| TJS30-1 | | 1 | 0.02 lb | \$21.50 | |
| TJS35 | 35 | 10 | 0.82 lb | \$280.00 | |
| TJS35-1 | | 1 | 0.03 lb | \$30.00 | |
| TJS40 | 40 | 10 | 0.82 lb | \$307.00 | |
| TJS40-1 | | 1 | 0.03 lb | \$33.50 | |
| TJS45 | 45 | 10 | 0.82 lb | \$323.00 | |
| TJS45-1 | | 1 | 0.03 lb | \$36.50 | |
| TJS50 | 50 | 10 | 0.82 lb | \$284.00 | |
| TJS50-1 | | 1 | 0.03 lb | \$31.00 | |
| TJS60 | 60 | 10 | 0.82 lb | \$281.00 | |
| TJS60-1 | | 1 | 0.03 lb | \$29.50 | |
| TJS70 | 70 | 5 | 0.51 lb | \$205.00 | |
| TJS70-1 | | 1 | 0.11 lb | \$45.00 | |
| TJS80 | 80 | 5 | 0.51 lb | \$231.00 | |
| TJS80-1 | | 1 | 0.11 lb | \$52.00 | |
| TJS90 | 90 | 5 | 0.51 lb | \$259.00 | |
| TJS90-1 | | 1 | 0.11 lb | \$55.00 | |
| TJS100 | 100 | 5 | 0.51 lb | \$231.00 | |
| TJS100-1 | | 1 | 0.11 lb | \$52.00 | |
| TJS110 | 110 | 1 | 0.19 lb | \$54.00 | |
| TJS125 | 125 | 1 | | \$54.00 | |
| TJS150 | 150 | 1 | | \$54.00 | |
| TJS175 | 175 | 1 | | \$56.00 | |
| TJS200 | 200 | 1 | \$56.00 | | |
| TJS225 | 225 | 1 | 0.46 lb | \$137.00 | |
| TJS250 | 250 | 1 | | \$137.00 | |
| TJS300 | 300 | 1 | | \$154.00 | |
| TJS350 | 350 | 1 | | \$159.00 | |
| TJS400 | 400 | 1 | \$163.00 | | |
| TJS450 | 450 | 1 | 0.85 lb | \$322.00 | |
| TJS500 | 500 | 1 | | \$331.00 | |
| TJS600 | 600 | 1 | | \$360.00 | |

Extremely Fast-Acting Class T Fuses



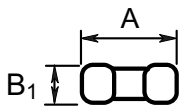
300V TJN Fuses



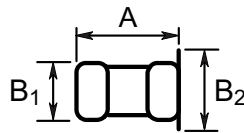
600V TJS Fuses

| CROSS REFERENCE | | | | |
|-----------------|--------|----------|-------------|------------|
| VOLTS | EDISON | BUSSMANN | MERSEN GOLD | LITTELFUSE |
| 300 | TJN | JJN | A3T | JLLN |
| 600 | TJS | JJS | A6T | JLLS |

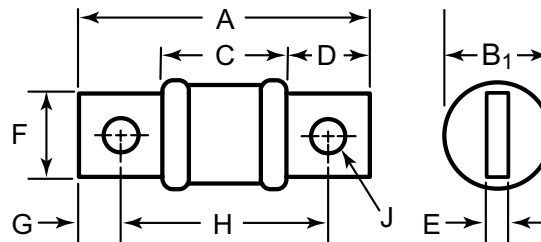
TJN & TJS Fuse Dimensions



1A to 60A TJN
1A to 30A TJS



35A to 60A TJS



70A to 600A

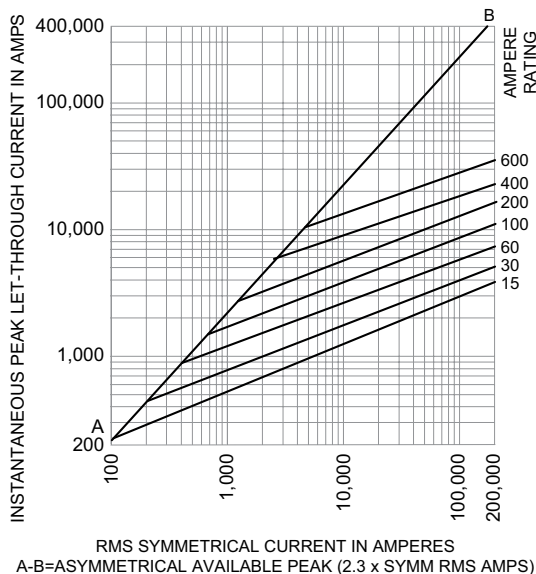
| Fuse Type | Current Rating | Overall Length | Maximum Diameter | | Barrel Length | Blade Length | Blade Thickness | Blade Width | Mounting Hole Spacing | | | |
|------------------|----------------|-----------------|------------------|-----|---------------|--------------|-----------------|-------------|-----------------------|-------------|--------------|-------------|
| | | | B1 | B2 | | | | | G | H | J | |
| <i>(in [mm])</i> | | | | | | | | | | | | |
| TJN (300 VAC) | Range | A | B1 | B2 | C | D | E | F | G | H | J | |
| | (A) | n/a (no blades) | | | | | | | | | | |
| | 1-30 | 0.88 [22.4] | 0.41 [10.4] | n/a | 0.84 [21.3] | 0.66 [16.8] | 0.125 [3.18] | 0.75 [19.1] | 0.27 [6.86] | 1.56 [39.6] | 0.284 [7.21] | |
| | 35-60 | 2.16 [54.9] | 0.56 [14.2] | | | | | | | | | |
| | 70-100 | 2.44 [62.0] | 0.82 [20.8] | | | | | | | | | |
| | 110-200 | 2.75 [69.9] | 1.06 [26.9] | | | | | | | | | |
| 225-400 | 3.06 [77.7] | 1.33 [33.8] | | | | | | | | | | |
| 450-600 | 3.06 [77.7] | 1.60 [40.6] | | | | | | | | | | |
| TJS (600 VAC) | 1-30 | 1.50 [38.1] | 0.56 [14.2] | n/a | 1.64 [41.7] | 0.66 [16.8] | 0.125 [3.18] | 0.75 [19.1] | 0.27 [6.86] | 2.36 [59.9] | 0.281 [7.14] | |
| | 35-60 | 1.56 [39.6] | 0.81 [20.6] | | | | | | | | | 1.00 [25.4] |
| | 70-100 | 2.95 [74.9] | 0.82 [20.8] | | | | | | | | | |
| | 110-200 | 3.25 [82.6] | 1.07 [27.2] | | | | | | | | | |
| | 225-400 | 3.63 [92.2] | 1.60 [40.6] | | | | | | | | | |
| | 450-600 | 3.98 [101] | 2.08 [52.8] | | | | | | | | | |

Extremely Fast-Acting Class T Fuses

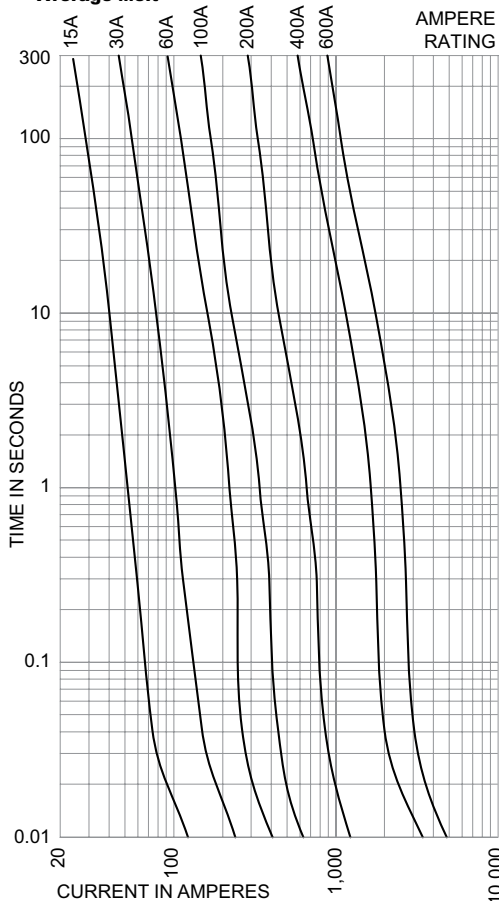


TJN (300 VAC) Trip Curves

Current Limitation Curves

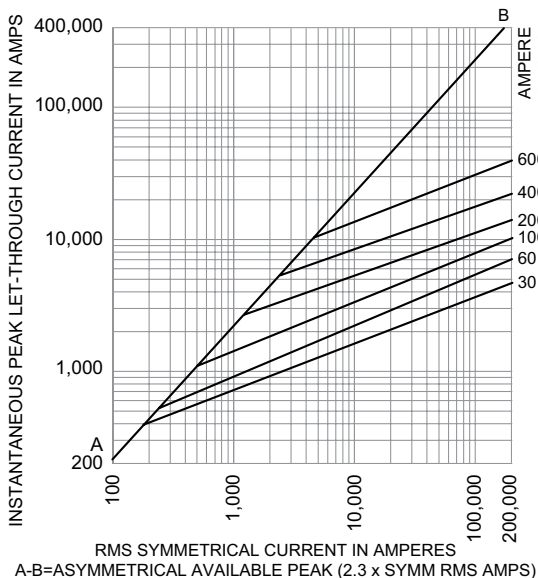


TJS Time-Current Characteristic Curves - Average Melt

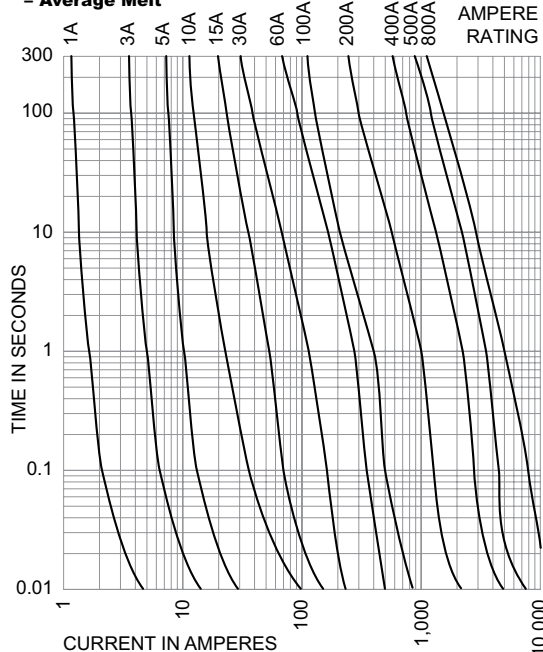


TJS (600 VAC) Trip Curves

Current Limitation Curves



TJS Time-Current Characteristic Curves - Average Melt





Selection Guide

Line Overview

The Edison family of fuses, fuse blocks and fuse holders is divided into two classes:

1. Current Limiting: Class CC, Class J, Class L, Class RK, Class T
2. General Purpose: Class M Midget and Small Dimension

The fuse selection guide below is a general summary of the

specifications included for each fuse type. This selection guide does not include the many variables that can exist for specific situations such as local codes, unusual temperature, or other operating conditions. When selecting fuses, be sure to comply with any applicable PUBLIC SAFETY standards that apply to Overcurrent Protection Devices (OPD).

| Edison Fuses Selection Guide and General Specifications | | | | | | | | | | | | |
|---|--|---|---|-------------------|--|-------------------|--|-------------|---|--|-----------|---|
| Description | Current Limiting | | | | | | | | | | | |
| | Class J | | Class RK5 | | Class RK1 | | Class T | | Class L | Class CC | | |
| Fuse Type | Fast-Acting | Time-Delay | Time-Delay | | | | Extremely Fast-Acting | Fast-Acting | Fast-Acting | Time-Delay | | |
| Part Number | JHL | JDL | ECNR | ECSR | LENRK | LESRK | TJN | TJS | LCU | HCLR | HCTR | EDCC |
| Voltage Rating | 600VAC 450VDC | 600VAC 300VDC* | 250VAC 125 VDC* (1-200A) 250VDC* (201-600A) | 600VAC 300VDC* | 250VAC 125 VDC* (10-60A) 250VDC* (70-600A) | 600VAC 300VDC* | 300VAC 160 VDC (15-600A) | 600VAC | 600V | 600VAC 300VDC (15-20A) | 600VAC | 600VAC 300VDC (0.5-2.25A) (20-30A) |
| Amp Rating | 1 - 600 | | 1 - 600 | 3 - 600 | 10 - 600 | 5 - 600 | 1 - 600 | | 601 - 1200 | 0.5 - 30 | 0.25 - 30 | 0.5 - 30 |
| Interrupting Rating | 200,000 RMS Symmetrical Amps | | | | | | | | | | | |
| Current Limiting | Class J | | Class RK5 | | Class RK1 | | Class T | | Class L | Class CC | | |
| Agency Approvals | UL Listed Class J Guide JDDZ File E162363 CSA Certified HRCI-J per C22.2, No. 248.8 File 700489 RoHS compliant | UL Listed Class J Guide JDDZ File E162363 CSA Certified HRCI-J per C22.2, No. 248.8 File 700489 | UL Listed, Class RK, Guide JDDZ, File E162363 CSA Certified HRCI-R per C22.2, No. 248.12, File 700489 (LENRK CSA File 053787) | | | | UL Listed, Class T, Guide JDDZ, File E162363 CSA Certified HRCI-T per C22.2, No. 248.12, File 53787, Class 1422-02 & 1422-82 | | UL Listed, Std. 248-10 CSA Certified, HRC-L C22.2 No. 248.10, Class 1422-02, File 53787 | UL Listed to 248.4, Class CC, Guide JDDZ, File E162363, CSA certified HRCI-MISC per C22.2 No. 248.4, File 700489 | | |
| Dimensions | See product specification pages. | | | | | | | | | ferrule (in): 13/32, length (in): 1-1/2 | | |

* Self-certified DC ratings

| Edison Fuses Selection Guide and General Specifications | | | | | | | | | | | | |
|---|--|-----------------|------------|-----------|--|---|---|---|-------------------------------|---|------------------------------|------------------|
| Description | General Purpose – Midget | | | | General Purpose – Small Dimension Electronic | | | | | | | |
| | Fast-Acting | | Time-Delay | | Fast-Acting Ceramic | Fast-Acting Glass | | Medium Time-Delay Glass | Time-Delay Ceramic | Time-Delay Glass | Fast-Acting Glass | Time-Delay Glass |
| Part Number | MCL | MOL | MEQ | MEN | ABC | AGC | GMA | GMC | MDA | MDL | S500 | S506 |
| Voltage Rating | 600 VAC | 250 VAC | 500 VAC | 250 VAC | 250 VAC (0.5 to 30A) 125VDC: (0.5 to 30A) | 250VAC: (0.1 to 10A) 32VAC: (15 to 30A) | 250VAC (0.063 - 3A) 125VAC (4 - 15A) | 250VAC (0.5 - 3A) 125VAC (4 - 10A) | 250VAC 125VDC (20A) | 250VAC: (0.0625 to 8A) 32VAC: (10 to 20A) | 250VAC | 250VAC |
| Amp Rating | 0.5 to 50 | 0.5 to 30 | 0.25 to 30 | 0.5 to 30 | 0.5 to 30 | 0.10 to 30 | 0.063 to 15 | 0.5 to 10 | 0.5 to 20 | 0.0625 to 20 | 0.032 to 10 | 0.25 to 6.3 |
| Interrupting Rating | 100,000 RMS Amps | 10,000 RMS Amps | | | | See specifications table on product pages | | | | | | |
| Current Limiting | N/A | | | | N/A | | | | | | | |
| Agency Approvals | UL Listed to 248.14, File E162443 CSA Cert. C22.2 Part 59.2, LR 700489 | | | | UL Listed standard 248-14 UL Listed Guide and File nos. (ABC 0.25-20 A): (AGC 1/100-10 A) JDYX and E19180 UL Recognition Guide and File nos. (ABC 20-30A):(AGC 11-30) JDYX2 and E19180 CSA Certification Record No: 053787 C 000 and Class No: 1422 01 and 1422 30 | Designed to UL/CSA 248-14 UL Listed, Guide JDYX, File E19180 63mA-6A UL Recognition, Guide JDYX2, File E19180, 7A-15A CSA Certified, File 053787_C_000, 63mA-6A Class 1422-01 | | UL Listed standard 248-14 UL Listed Card: MDA 2/10-20A, MDL 1/16-8A (Guide JDYX, File E19180 UL Recognized Card: MDA 25-30A MDL 9-30A (Guide JDYX2, File E19180) CSA Certification Card: MDA 2/10-15A (Class No. 1422-01) | | UL Recognized Guide JDYX2, File E19180 Semko Approval VDE Approval BSI Approval IMQ Approval RoHS compliant | | |
| | RoHS | | | | | | | | | | | |
| Dimensions | ferrule (in): 13/32 length (in): 1-1/2 | | | | 1/4" x 1-1/4", (6.3mm x 32mm) | | 0.197" x 0.788" (5mm x 20mm) | | 1/4" x 1-1/4", (6.3mm x 32mm) | | 0.197" x 0.788" (5mm x 20mm) | |

T300 & T600 Fuse Blocks for Class T Fuses



Description

For use with Class T fuses

T300 series: for use with 300V Class T fuses (TJN)

T600 series: for use with 600V Class T fuses (TJS)

- Terminal type:
 - SR = Screw type; clip with re-inforcing spring
 - CR = Box lug type; clip with reinforcing spring
 - C = Box lug type; clip with reinforcing spring standard on FB rated 100A; spring not required above 100A for bolt-on fuses

Edison Class T Fuse Blocks



Specifications

Construction: Glass Polyester; Phenolic on 600V

UL Flammability: 94V-O

Ratings:

T300: 300 VAC; 30–600A

T600: 600 VAC; 30–600A

Short-circuit Current Rating:

200,000 RMS Symmetrical Amps

Agency Approvals

- UL Listed, Guide IZLT, File E14853
- CSA, Class 6225-01, File 47235
- CE
- REACH
- RoHS

Class T Fuse Blocks

| Part Number | Volts | Amps | Poles | Terminal Type | Wire Range (AWG) | Fig # | Wt. (lb) | Pcs /Pkg | Price | | | |
|----------------------------|-------|------------|------------|---------------------------|------------------|-------|----------|----------|---------------------------|---------|---------|---------|
| T30030-2SR | 300 | 0.5 to 30 | 2 | screw | 10–18 Cu (only) | 1 | 0.3 | 1 | \$35.50 | | | |
| T30030-3SR | | | 3 | | | | 0.4 | | \$35.00 | | | |
| T30060-2CR | | | 31 to 60 | | | | 2 | | 2–14 Cu/Al | 0.4 | \$45.00 | |
| T30060-3CR | | 3 | | 0.5 | \$68.00 | | | | | | | |
| T30100-1CR | | 61 to 100 | 1 | box lug | 1/0–8 Cu/Al | 4 | 0.6 | | Retired | | | |
| T30100-3CR | | | | | | | 3 | | 1.5 | Retired | | |
| T30200-1C | | | 101 to 200 | | | | 1 | | 250 kcmil – 6 Cu/Al | 5a | 1.0 | Retired |
| T30600-1C | | | 401 to 600 | | | | 1 | | (2) 600 kcmil – 4/0 Cu/Al | 7 | 2.4 | Retired |
| T60030-1SR | 600 | | 0.5 to 30 | | | | 1 | screw | 10–18 Cu (only) | 2 | 0.2 | \$26.00 |
| T60030-2SR | | 2 | | 0.3 | \$46.50 | | | | | | | |
| T60030-3SR | | 3 | | 0.5 | \$41.00 | | | | | | | |
| T60060-1CR | | 31 to 60 | 1 | box lug | 2–14 Cu/Al | 3 | 0.3 | \$25.50 | | | | |
| T60060-2CR | | | 2 | | | | 0.4 | \$52.00 | | | | |
| T60060-3CR | | | 3 | | | | 0.6 | \$76.00 | | | | |
| T60100-1C | | 61 to 100 | 1 | 2/0–14 Cu/Al | 4 | 1.0 | Retired | | | | | |
| T60100-3C | | | 3 | | | 1.5 | Retired | | | | | |
| T60400-1C | | 201 to 400 | 1 | 600 kcmil – 2/0 Cu/Al | 6 | 1.3 | Retired | | | | | |
| T60600-1C | | 401 to 600 | 1 | (2) 600 kcmil – 4/0 Cu/Al | 7 | 2.6 | Retired | | | | | |

T300 & T600 Fuse Blocks for Class T Fuses



Fuse Block Terminal Torque Specifications

| Terminal Tightening Torque Specs – Class T Fuse Blocks | | | | | | | |
|--|------|----------|-------|---------------------------|------------------|---------------------|---------------------|
| Part Number | Amps | Volts | Poles | Terminal Type | Wire Range (AWG) | Wire Torque (lb-in) | Fuse Torque (lb-in) |
| Tx0030-xSR | 30 | 300, 600 | 1,2,3 | screw | 10–18 Cu (only) | 20 | n/a |
| Tx0060-xCR | 60 | 300, 600 | 1,2,3 | box lug | 2–3 | 50 | n/a |
| | | | | | 4–6 | 45 | |
| | | | | | 8 | 40 | |
| | | | | | 10–14 | 35 | |
| T30100-xCR | 100 | 300 | 1,3 | | 10–8 Cu/Al | 100 | n/a |
| T60100-xC | 100 | 600 | 1,3 | | 2/0–3 | 50 | 70 |
| | | | | | 4–6 | 45 | |
| | | | | | 8 | 40 | |
| | | | | 10–14 | 35 | | |
| Tx0200-1C | 200 | 300, 600 | 1 | 250 kcmil – 6 Cu/Al | 375 | 132 | |
| Tx0400-1C | 400 | 300, 600 | 1 | 600 kcmil – 2/0 Cu/Al | 500 | 192 | |
| Tx0600-1C | 600 | 300, 600 | 1 | (2) 600 kcmil – 4/0 Cu/Al | 450 | 380 | |

Fuse Block Dimensions

Fig.1: 300V; 0.5–60A

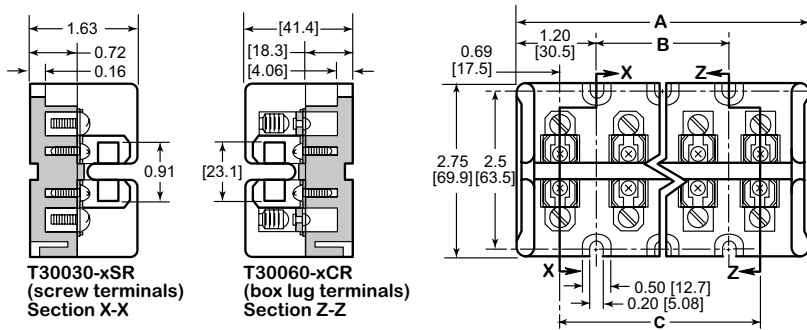


Figure 1: 300V 1/2A to 60A

| Terminal Type | Dimensions (in [mm]) | | |
|--------------------------|----------------------|-------------|-------------|
| | A | B | C |
| T30030-2SR T30060-2CR | 2.41 [61.2] | – | 1.03 [26.2] |
| T30030-3SR T30060-3CR | 3.44 [87.4] | 1.03 [26.2] | 2.06 [52.3] |

Fig.2: 600V; 0.5–30A

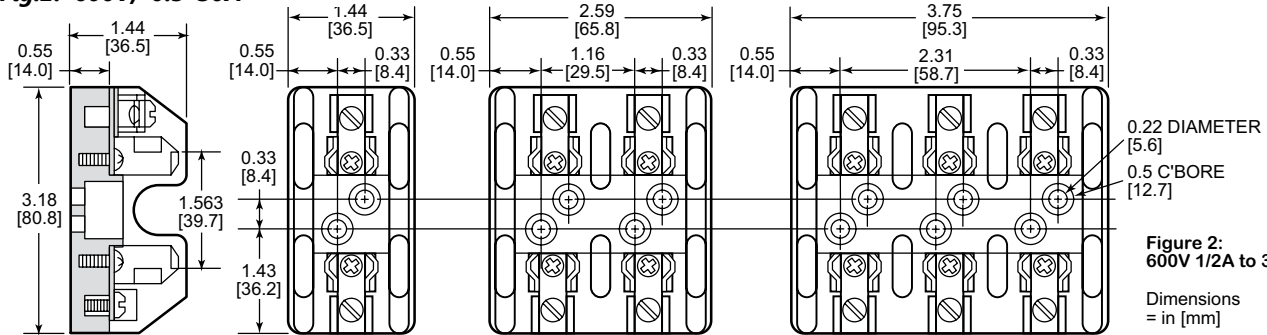


Figure 2: 600V 1/2A to 30A

Dimensions = in [mm]

Fig.3: 600V; 31–60A

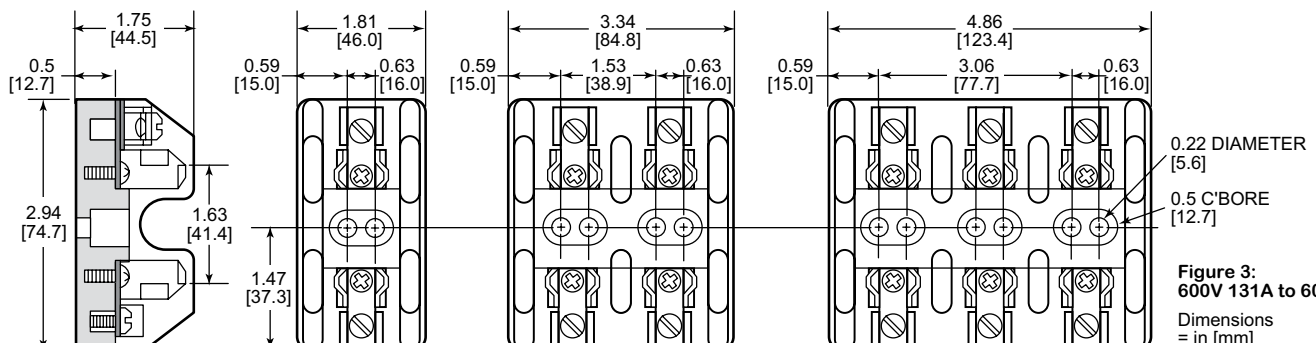


Figure 3: 600V 131A to 60A

Dimensions = in [mm]

T300 & T600 Fuse Blocks for Class T Fuses



Fuse Block Dimensions

Fig.4: 300V, 600V; 61-100A

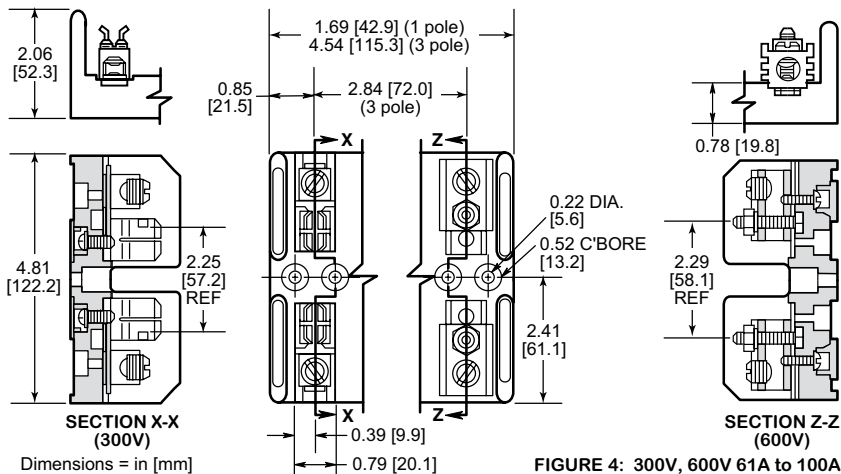


Fig.5a: 300V, 600V; 101-200A

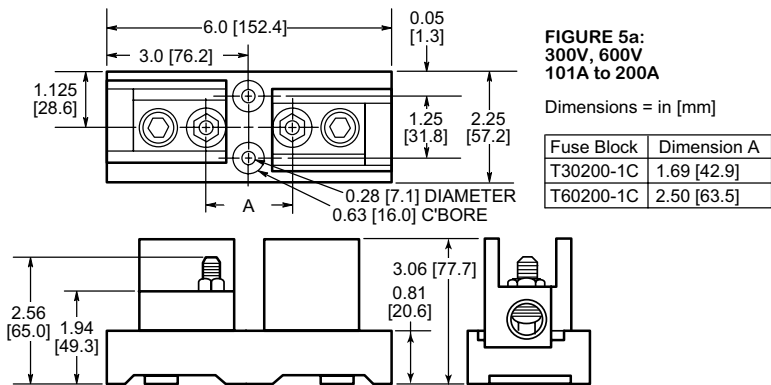
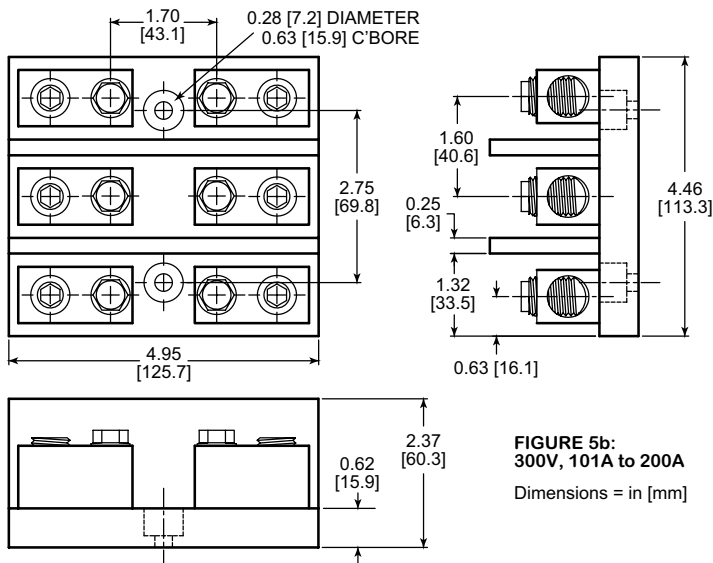


Fig.5b: 300V; 101-200A



T300 & T600 Fuse Blocks for Class T Fuses



Fuse Block Dimensions

Fig.6: 300V, 600V; 201-400A

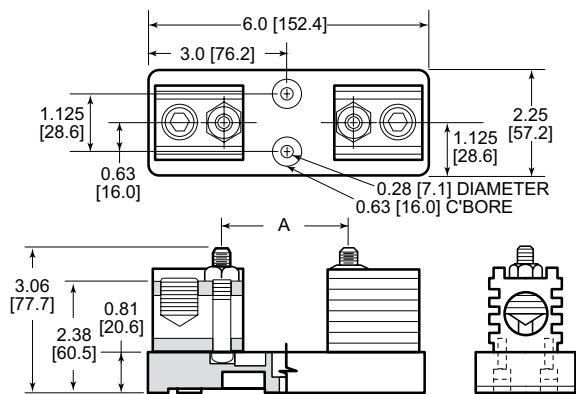
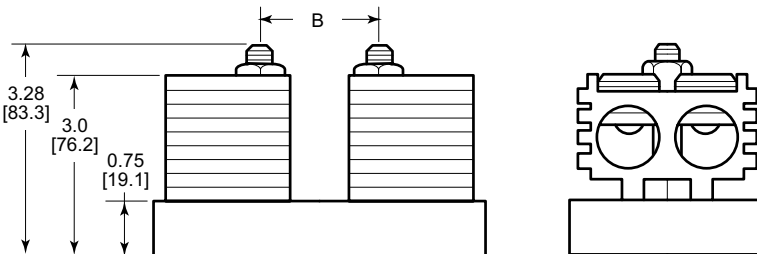
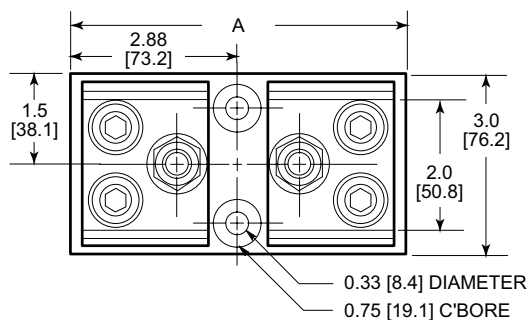


FIGURE 6:
300V, 600V
201A to 400A

Dimensions = in [mm]

| Fuse Block | Dimension A |
|------------|-------------|
| T30400-1C | 1.84 [46.7] |
| T60400-1C | 2.72 [69.1] |

Fig.7: 300V, 600V; 401-600A



Dimensions = in [mm]

FIGURE 7: 300V, 600V 401A to 600A

| Fuse Block | Dimensions (in [mm]) | |
|------------|------------------------|-------------|
| | A | B |
| T30600-1C | 5.75 [146] | 2.03 [51.6] |
| T60600-1C | 6.75 [171.4] | 2.95 [74.9] |

Accessories



FP-2

| Accessories | | | |
|--|---|---------|---------|
| Part Number | Description | Pcs/Pkg | Price |
| FP-2 | Fuse puller for fuse dia. 13/32" - 13/16". Fuse type: 0-60A, 250V; 0-30A, 600V | 1 | \$34.50 |
| JV-L* <i>(Not Field Installable)</i> | Multi-pole connection kit to connect new design multiple Class CC and Midget Class fuse holders together. Kit consists of 6 connectors and 3 handle pins to connect up to 4 fuse holders. | | \$13.00 |

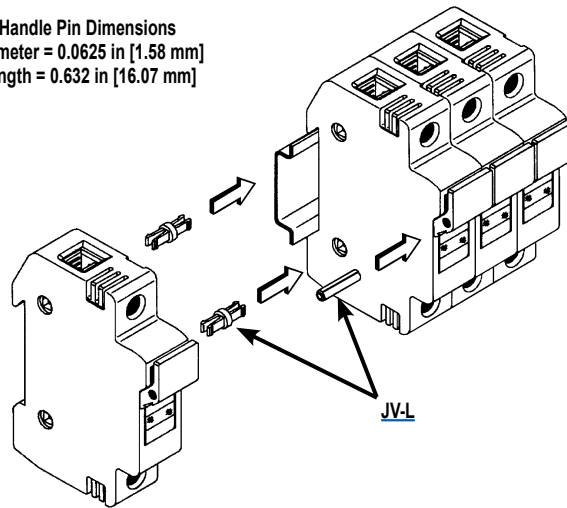
Note: Will not work with retired design fuse holders shipped before November 1, 2009.

**Roll pin punch or installation tool is required to install handle pins (Tool not sold by AutomationDirect.com).*



JV-L

Handle Pin Dimensions
 Diameter = 0.0625 in [1.58 mm]
 Length = 0.632 in [16.07 mm]



JV-L

Cross Reference Guide



CROSS REFERENCE GUIDE By manufacturers type reference or series number. Ampere ratings must be added for ordering purposes.

| FUSE TYPE | | VOLT | EDISON | BRUSH/ DORMAN | BUSSMANN | MERSEN / GOULD | GEC/CEFCO | LITTELFUSE |
|--|--------------------------------|---------|---------------------------|------------------|-----------|-------------------|-----------|------------|
| UL CLASS CURRENT LIMITING FUSES (CSA CLASS) | | | | | | | | |
| CC (HRCI-CC) | <i>Time-Delay</i> | 600 | EDCC | - | LP-CC | ATDR | - | CCMR |
| | <i>Time-Delay</i> | 600 | HCTR | - | FNQ-R | ATQR | - | KLDR |
| | <i>Fast-Acting</i> | 600 | HCLR | HCLR | KTK-R | ATMR | CTK-R | KLKR |
| RK1 | <i>Time-Delay Dual Element</i> | 250 | LENRK | - | LPN-RK-SP | A2DR | - | LLNRK |
| | | 600 | LESRK | - | LPS-RK-SP | A6DR | - | LLSRK |
| RK5 | <i>Time-Delay Dual Element</i> | 250 | ECNR | - | FRN-R | TR | - | FLNR |
| | | 600 | ECSR | - | FRS-R | TRS | - | FLSR |
| J | <i>Time-Delay Dual Element</i> | 600 | JDL | - | LPJ | AJT | - | JTD |
| | <i>High-Speed AC Drive</i> | 600 | JHL | - | DFJ | HSJ | - | - |
| T | <i>Extremely Fast-Acting</i> | 300 | TJN | - | JJN | A3T | - | JLLN |
| | | 600 | TJS | - | JJS | A6T | - | JLLS |
| UL CLASS GENERAL PURPOSE FUSES | | | | | | | | |
| Midget | <i>Fast-Acting</i> | 600 | MCL | MCL | KTK | ATM | CTK | KLK |
| | | 250 | MOL | MOL | BAF/BAN | OTM | - | BLF |
| | <i>Time-Delay</i> | 500 | MEQ | MEQ | FNQ | ATQ | - | FLQ |
| | | 250 | MEN | MEN | FNM | TRM | - | FLM |
| 1/4"x 1-1/4" Ceramic | <i>Fast-Acting</i> | 250/125 | ABC | ABC | ABC | GAB | - | 314 |
| 1/4"x 1-1/4" Glass | | 250/32 | AGC | AGC | AGC | GGC | - | 312 |
| 1/4"x 1-1/4" Ceramic | <i>Time-Delay</i> | 250 | MDA | MDA | MDA | - | - | 326 |
| 1/4"x 1-1/4" Glass | | 250/32 | MDL | MDL | MDL | GDL | - | 313 |
| 5x20 mm Glass | <i>Fast-Acting</i> | 250/125 | GMA | GMA | GMA | GGM | - | 235 |
| | <i>Medium Time-Delay</i> | 250/125 | GMC | GMC | GMC | GSC | - | - |
| 5x20 mm Glass | <i>Fast-Acting</i> | 250 | S500 | BDB | GDB | GSB | - | 217 |
| | <i>Time-Delay</i> | 250 | S506 | BDC | GDC | GDG | - | 218 |
| Fuse Puller | | | | | | | | |
| Fuse Puller FP-2 | | | old - 38072 new - FP-2 | - | FP-2 | - | - | - |