

T300 & T600 Fuse Blocks for Class T Fuses



Description

For use with Class T fuses

T300 series: for use with 300V Class T fuses (TJN)

T600 series: for use with 600V Class T fuses (TJS)

- Terminal type:
 - SR = Screw type; clip with re-inforcing spring
 - CR = Box lug type; clip with reinforcing spring
 - C = Box lug type; clip with reinforcing spring standard on FB rated 100A; spring not required above 100A for bolt-on fuses

Specifications

Construction: Glass Polyester; Phenolic on 600V

UL Flammability: 94V-O

Ratings:

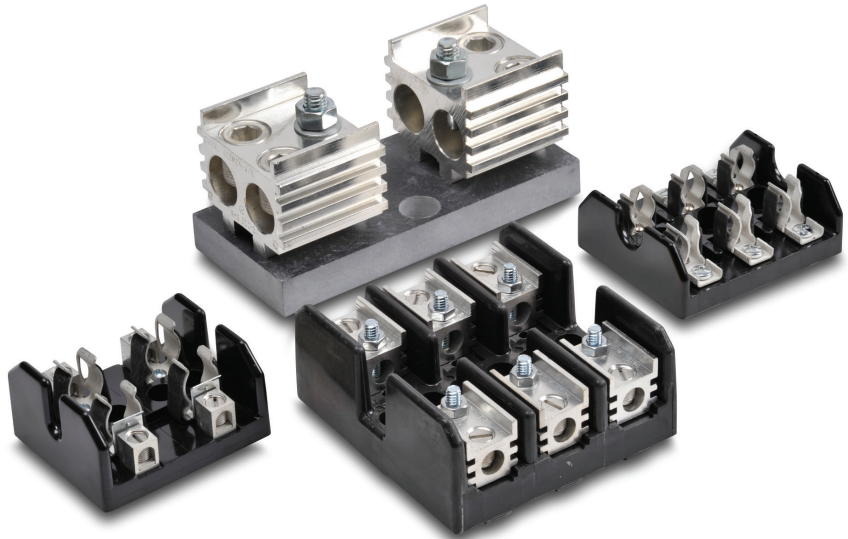
T300: 300 VAC; 30–600A

T600: 600 VAC; 30–600A

Short-circuit Current Rating:

200,000 RMS Symmetrical Amps

Edison Class T Fuse Blocks



Agency Approvals

- UL Listed, Guide IZLT, File E14853
- CSA, Class 6225-01, File 47235
- CE
- REACH
- RoHS

Class T Fuse Blocks

| Part Number | Volts | Amps | Poles | Terminal Type | Wire Range (AWG) | Fig # | Wt. (lb) | Pcs /Pkg | Price | | | | | |
|----------------------------|------------|-----------|---------------------------|---------------|------------------|-------------|----------|----------|------------|-----------|---------------------------|-------|-----------------|---------|
| T30030-2SR | 300 | 0.5 to 30 | 2 | screw | 10–18 Cu (only) | 1 | 0.3 | 1 | \$35.50 | | | | | |
| T30030-3SR | | | 3 | | | | 0.4 | | \$35.00 | | | | | |
| T30060-2CR | | | 31 to 60 | | | | 2 | | 2–14 Cu/Al | 0.4 | \$45.00 | | | |
| T30060-3CR | | 3 | | 0.5 | \$68.00 | | | | | | | | | |
| T30100-1CR | | 61 to 100 | 1 | 1 | box lug | 1/0–8 Cu/Al | 4 | | 0.6 | Retired | | | | |
| T30100-3CR | | | | | | | | | 3 | 1.5 | Retired | | | |
| T30200-1C | | | | | | | | | 101 to 200 | 1 | 250 kcmil – 6 Cu/Al | 5a | 1.0 | Retired |
| T30600-1C | | | | | | | | | 401 to 600 | 1 | (2) 600 kcmil – 4/0 Cu/Al | 7 | 2.4 | Retired |
| T60030-1SR | | | | | | | | | 600 | 0.5 to 30 | 1 | screw | 10–18 Cu (only) | 2 |
| T60030-2SR | | 2 | 0.3 | \$46.50 | | | | | | | | | | |
| T60030-3SR | 3 | 0.5 | \$41.00 | | | | | | | | | | | |
| T60060-1CR | 31 to 60 | 1 | 2 | 2–14 Cu/Al | 3 | 0.3 | \$25.50 | | | | | | | |
| T60060-2CR | | | | | | 2 | 0.4 | \$52.00 | | | | | | |
| T60060-3CR | | | | | | 3 | 0.6 | \$76.00 | | | | | | |
| T60100-1C | 61 to 100 | 1 | 1 | box lug | 2/0–14 Cu/Al | 4 | 1.0 | Retired | | | | | | |
| T60100-3C | | | | | | | 3 | 1.5 | | Retired | | | | |
| T60400-1C | 201 to 400 | 1 | 600 kcmil – 2/0 Cu/Al | 6 | 1.3 | Retired | | | | | | | | |
| T60600-1C | 401 to 600 | 1 | (2) 600 kcmil – 4/0 Cu/Al | 7 | 2.6 | Retired | | | | | | | | |

T300 & T600 Fuse Blocks for Class T Fuses



Fuse Block Terminal Torque Specifications

| Terminal Tightening Torque Specs – Class T Fuse Blocks | | | | | | | |
|--|------|----------|-------|---------------------------|------------------|---------------------|---------------------|
| Part Number | Amps | Volts | Poles | Terminal Type | Wire Range (AWG) | Wire Torque (lb-in) | Fuse Torque (lb-in) |
| Tx0030-xSR | 30 | 300, 600 | 1,2,3 | screw | 10–18 Cu (only) | 20 | n/a |
| Tx0060-xCR | 60 | 300, 600 | 1,2,3 | box lug | 2–3 | 50 | n/a |
| | | | | | 4–6 | 45 | |
| | | | | | 8 | 40 | |
| | | | | | 10–14 | 35 | |
| T30100-xCR | 100 | 300 | 1,3 | | 10–8 Cu/Al | 100 | n/a |
| T60100-xC | 100 | 600 | 1,3 | | 2/0–3 | 50 | 70 |
| | | | | | 4–6 | 45 | |
| | | | | | 8 | 40 | |
| | | | | 10–14 | 35 | | |
| Tx0200-1C | 200 | 300, 600 | 1 | 250 kcmil – 6 Cu/Al | 375 | 132 | |
| Tx0400-1C | 400 | 300, 600 | 1 | 600 kcmil – 2/0 Cu/Al | 500 | 192 | |
| Tx0600-1C | 600 | 300, 600 | 1 | (2) 600 kcmil – 4/0 Cu/Al | 450 | 380 | |

Fuse Block Dimensions

Fig.1: 300V; 0.5–60A

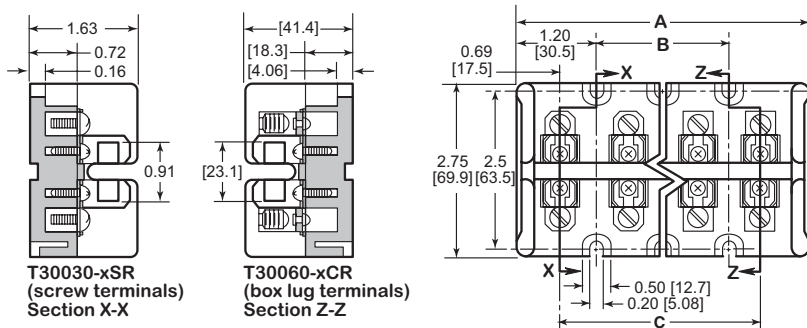


Figure 1: 300V 1/2A to 60A

| Terminal Type | Dimensions (in [mm]) | | |
|--------------------------|----------------------|-------------|-------------|
| | A | B | C |
| T30030-2SR T30060-2CR | 2.41 [61.2] | – | 1.03 [26.2] |
| T30030-3SR T30060-3CR | 3.44 [87.4] | 1.03 [26.2] | 2.06 [52.3] |

Fig.2: 600V; 0.5–30A

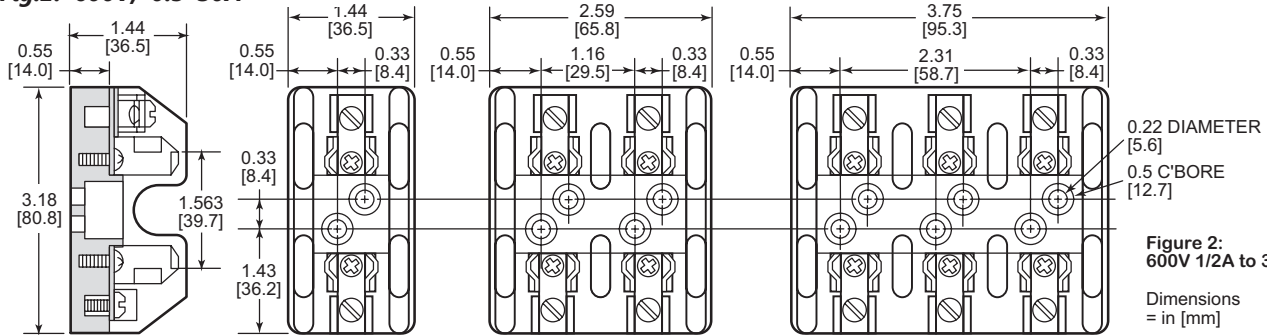


Figure 2: 600V 1/2A to 30A

Dimensions = in [mm]

Fig.3: 600V; 31–60A

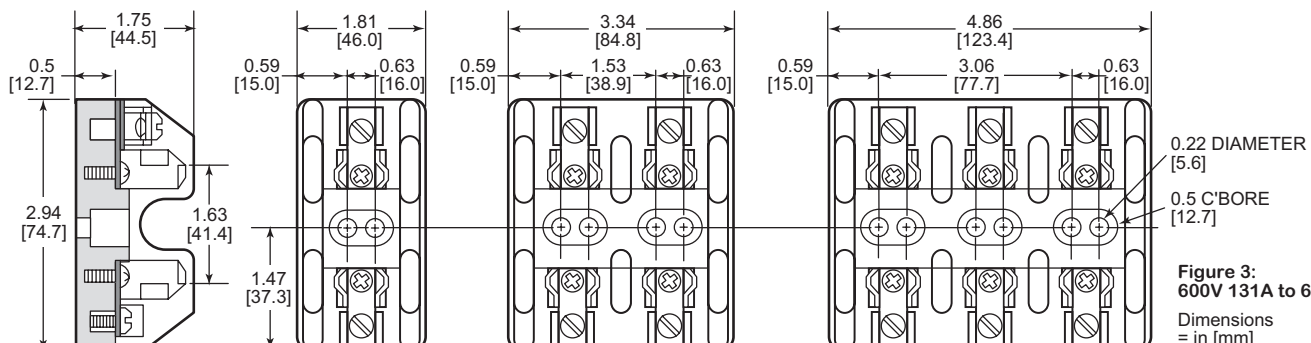


Figure 3: 600V 131A to 60A

Dimensions = in [mm]

T300 & T600 Fuse Blocks for Class T Fuses



Fuse Block Dimensions

Fig.4: 300V, 600V; 61-100A

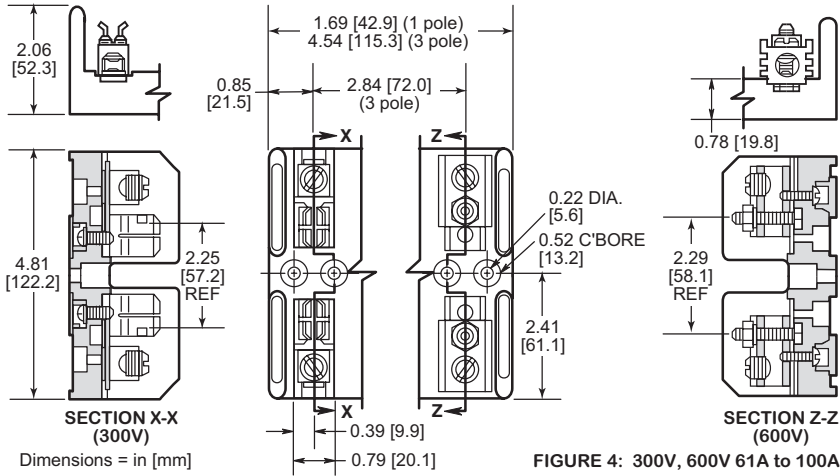


Fig.5a: 300V, 600V; 101-200A

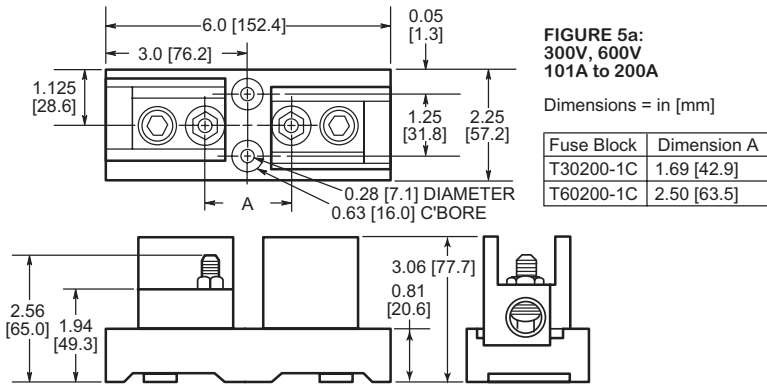
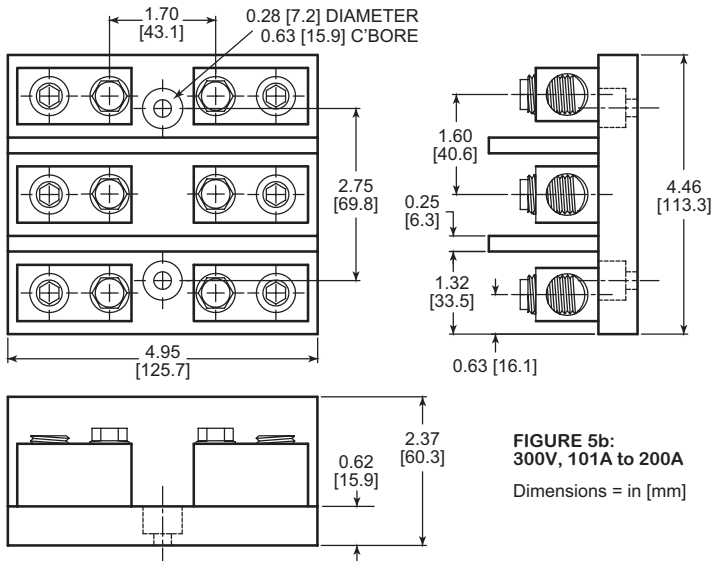


Fig.5b: 300V; 101-200A



T300 & T600 Fuse Blocks for Class T Fuses



Fuse Block Dimensions

Fig.6: 300V, 600V; 201-400A

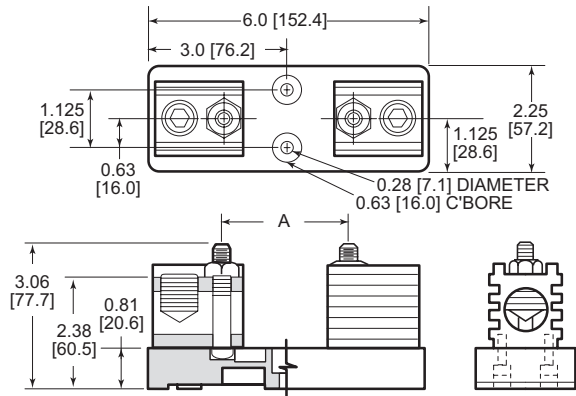
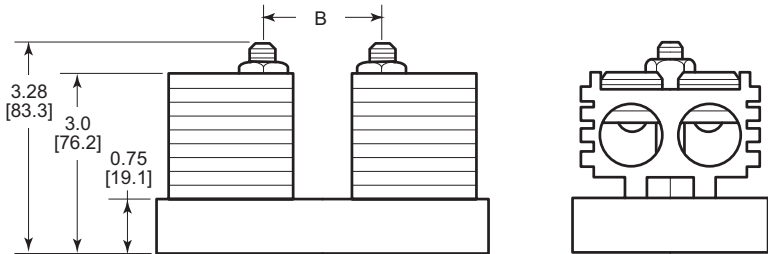
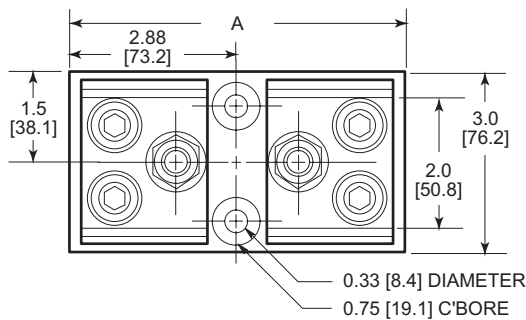


FIGURE 6:
300V, 600V
201A to 400A

Dimensions = in [mm]

| Fuse Block | Dimension A |
|------------|-------------|
| T30400-1C | 1.84 [46.7] |
| T60400-1C | 2.72 [69.1] |

Fig.7: 300V, 600V; 401-600A



Dimensions = in [mm]

FIGURE 7: 300V, 600V 401A to 600A

| Fuse Block | Dimensions (in [mm]) | |
|------------|------------------------|-------------|
| | A | B |
| T30600-1C | 5.75 [146] | 2.03 [51.6] |
| T60600-1C | 6.75 [171.4] | 2.95 [74.9] |