

Ecoline Enclosure LED Lights Magnet, Clip, or Screw Mounted



Magnet Mount



Screw Mount



Clip Mount

Applications

- Suitable for all types of panels and enclosures, especially where space is at a premium
- Suitable for daisy-chaining
- Allows for up to 10 lights to be connected to each other

Features

- Energy saving LED technology
- Available with magnet, clip, or screw mounts allowing them to be easily positioned in any enclosure
- Magnet mount has powerful non-slip rubberized magnets and work on ferrous steel only
- Clip mount has specifically designed clip holders for clip mount of the LED 025. The light is snapped into the clip holders and can be rotated 180°
- Wide voltage range
- Dual cage clamp for quick wiring



Listings

- UL File No. E234324
- CE, VDE, EAC

Ecoline Enclosure LED Lights

Magnet Mount	Price	Screw Mount	Price	Clip Mount	Price	Operating Voltage	Switch Type
<u>025403-10</u>	\$71.00	<u>025403-11</u>	\$60.00	<u>025403-13</u>	\$60.00	AC 100 - 240V, 50/60 Hz (min. 90V, max. 265V) DC 90 - 110V (min. 80V, max. 125V)	On/Off
<u>025413-10</u>	\$138.00	<u>025413-11</u>	\$126.00	<u>025413-13</u>	\$126.00	AC 100 - 240V, 50/60 Hz (min. 90V, max. 265V) DC 90 - 110V (min. 80V, max. 125V)	PIR motion sensor
<u>025423-10</u>	\$70.00	<u>025423-11</u>	\$58.00	<u>025423-13</u>	\$58.00	AC 100 - 240V, 50/60 Hz (min. 90V, max. 265V) DC 90 - 110V (min. 80V, max. 125V)	—
<u>025401-10</u>	\$94.00	<u>025401-11</u>	\$82.00	<u>025401-13</u>	\$82.00	DC 24-48 (min. 20V, max. 60V)	On/Off switch
<u>025411-10</u>	\$173.00	<u>025411-11</u>	\$161.00	<u>025411-13</u>	\$161.00	DC 24-48 (min. 20V, max. 60V)	PIR motion sensor
<u>025421-10</u>	\$92.00	<u>025421-11</u>	\$81.00	<u>025421-13</u>	\$81.00	DC 24-48 (min. 20V, max. 60V)	—

Ecoline Enclosure LED Lights Specifications

Power Consumption	Max. 5W (~75 W incandescent bulb)
Luminosity	400 Lm at 120° (1,200 Lm at 360° or equivalent 95 W light bulb)
Lamp Type	LED, 120° angle of radiation light color – daylight, color temperature – 6,000 to 7,000 K
Service Life	60,000 hrs. at 68°F [20°C]
Connection	2-pole dual cage clamp for 14 AWG [2.5mm] solid wire and 16 AWG [1.5 mm2] stranded wire wire end ferrule
Housing	plastic, transparent
Mounting	Magnet mount Screw mount (M5 screws not included) Clip mount (M6 screws not included)
Operating / Storage Temperature	-22 to 140°F [-30 to 60°C] / -40 to 185°F [-40 to 85°C]
Operating / Storage Humidity	max. 90% RH (non-condensing)
Protection Class	II (double insulated)
Protection Type	IP20
Approvals	CE, UL Recognized File No.: E234324, VDE, EAC, RoHS 2 compliant
Weight	approx. 7 oz. [200 g]

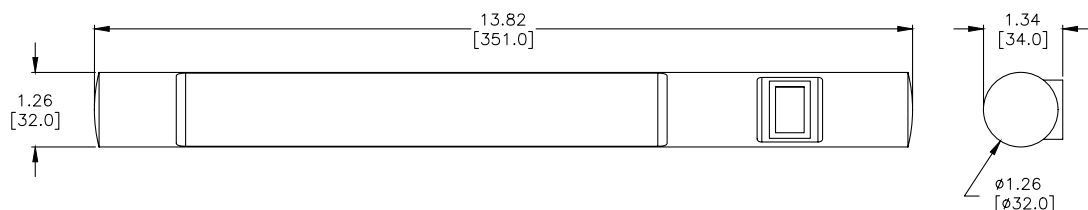


Connection End

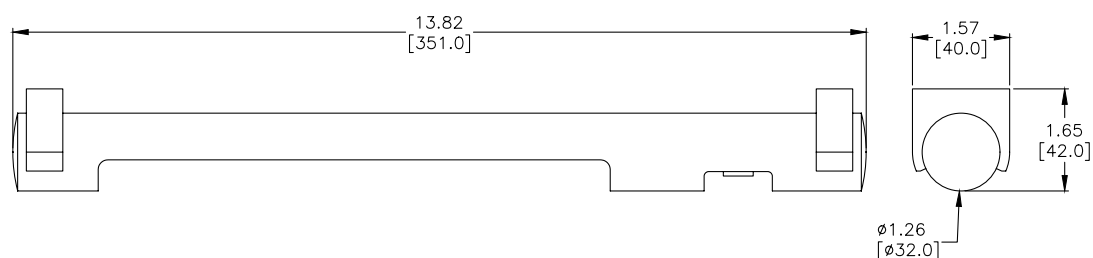
Ecoline Enclosure LED Lights Magnet, Clip, or Screw Mounted



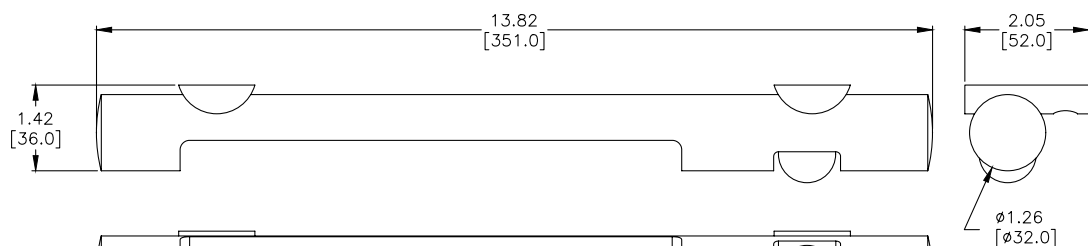
Dimensions



Magnet Mount



Clip Mount



Screw Mount