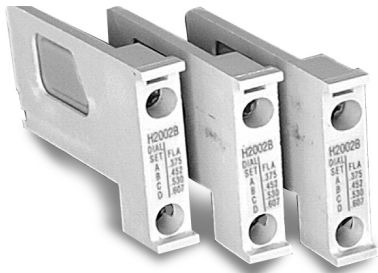


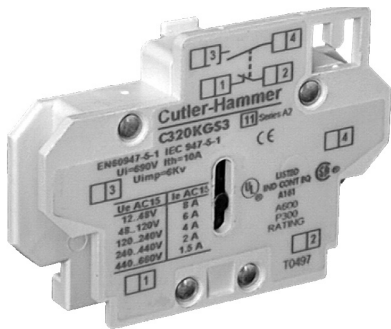


Motor Control Accessories



Heater packs

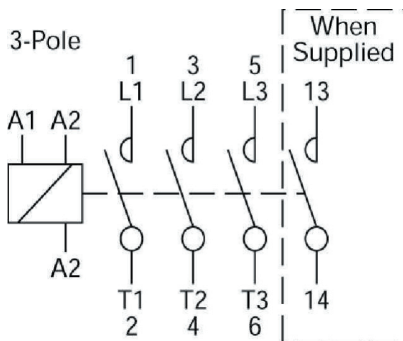
Heater packs are used with the C306DN3B overload relay. The load lugs are built into the overload base to allow load wiring prior to heater pack installation. Heater packs come in packs of three.



Auxiliary contacts

Auxiliary contacts are designed for installation on the Cutler-Hammer Freedom series contactors and starters. The snap-on design makes them quick and easy to install.

The bifurcated (i.e. contact is split into two fingers for redundant contact) design of the contact blocks features silver cadmium alloy contacts.

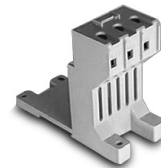


Auxiliary Contacts

Standard Trip-Class 20 Heater Packs						
Part Number (Three heater packs)	Price	Max. Amps	Motor Full Load Ampere Rating Dial Position			
			A	B	C	D
H2001B-3	\$140.00	32	.254	.306	.359	.411
H2002B-3	\$140.00	32	.375	.452	.530	.607
H2003B-3	\$140.00	32	.560	.676	.791	.907
H2004B-3	\$140.00	32	.814	.983	1.15	1.32
H2005B-3	\$140.00	32	1.20	1.45	1.71	1.96
H2006B-3	\$140.00	32	1.79	2.16	2.53	2.90
H2007B-3	\$140.00	32	2.15	2.60	3.04	3.49
H2008B-3	\$140.00	32	3.23	3.90	4.56	5.23
H2009B-3	\$140.00	32	4.55	5.50	6.45	7.40
H2010B-3	\$140.00	32	6.75	8.17	9.58	11.0
H2011B-3	\$140.00	32	9.14	10.8	12.4	14.0
H2012B-3	\$140.00	32	14.0	16.9	19.9	22.8
H2013B-3	\$140.00	32	18.7	22.7	26.7	30.7
H2014B-3	\$140.00	32	23.5	28.5	33.5	38.5

Contactors terminal markings

Contactors terminals are identified by a two-digit number in accordance with international standards approved by CENELEC (European Committee for Electrotechnical Standardization). This distinctive number is marked on the top nameplate and designates the type and quantity of built-in auxiliary contacts. The first digit indicates the quantity of N.O. contacts and the second digit indicates the quantity of N.C. contacts. Example: 10E indicates a contactor with one N.O. and no N.C. auxiliary contacts (factory supplied). In addition, all terminals conform to both CENELEC and NEMA requirements. Auxiliary contact terminals use the first digit to indicate location and the second digit to indicate status (1-2 means N.C. and 3-4 means N.O.) Example: 13-14 indicates the first auxiliary contact and it is a N.O. See the diagram to the left for the contact label.



Mounting adapters

DIN-rail and panel mounting adapters are required when overload relays need to be separately mounted due to space requirements. The terminal base adapter includes line terminals and connects with the overload relays.

Mounting Adapters		
Part Number	Price	Description
C306TB1	\$44.50	Mounting Adapter for 32A Overload Relay

Auxiliary Contacts		
Part Number	Price	Description
C320KGS3	\$100.00	1 N.O. and 1 N.C.
C320KGS1	\$72.00	1 N.O.