

E22 Accessories

Cutler-Hammer

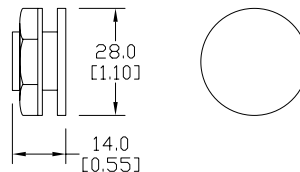
Octagonal Wrench



Hole Plug



Dimensions: mm [inches]



Bulb Removal Tool



Guard for E22 E-Stop



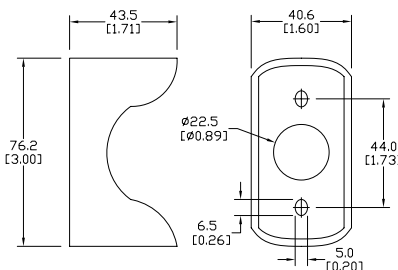
Replacement Incandescent Bulbs



Replacement LED Lamps



Accessories		
Part number	Description	Price
HT8WRENCH	Octagonal wrench for tightening back-of-panel mounting nut on all Cutler-Hammer operators.	\$19.00
E22BHP	Hole plug for unused 22mm panel holes.	\$14.00
HT8LAMPTOOL	Lamp extraction tool for removing lamps from switches, indicators and stacklights	\$10.00
E22MGTA	22mm yellow guard for E22LTA2QB and E22LPB2B for emergency stop applications.	\$30.50



Replacement Incandescent Bulbs				
Part Number	Rating	Description	Quantity	Price
ECX1900-5	6V, 1.2 watts	6V replacement bulb for 22mm switches and indicators. Miniature bayonet base T31/4.	5	\$9.50
ECX1902-5	24V@80mA	24V replacement bulb for 22mm switches and indicators. Miniature bayonet base T31/4.	5	\$9.50
ECX1904-5	130V@20mA	120V replacement bulb for 22mm switches and indicators. Miniature bayonet base T31/4.	5	\$20.00
W1121	120V@20mA	Replacement bulb for Cutler-Hammer E22 full voltage indicators and switches. Does not replace the LED monoblock indicators.	4	\$38.50
W1226	60V@20mA	Replacement bulb for Cutler-Hammer E22 resistor indicators, switches and pushbuttons. Does not replace the LED monoblock indicators.	4	\$38.50
W1819	24V@20mA	Replacement bulb for Cutler-Hammer E22 indicators and pushbuttons. Does not replace the LED monoblock indicators.	4	\$37.50

Replacement LED Lamps					
Part Number	Color	Rating	Description	Quantity	Price
ECX1911-2	Red	24V@26mA	LED replacement lamp for miniature bayonet bases Works with 22mm switches and indicators, but illumination will not be as even when used with the ECX 22mm indicators Note: Will not replace sealed Cutler-Hammer monoblock LED indicators.	2	\$17.50
ECX1912-2	Green				\$22.00
ECX1913-2	Yellow				\$17.50
ECX1914-2	Blue				\$23.50
ECX1915-2	White				\$28.00
ECX1921-2	Red	120V@5mA			\$17.50
ECX1922-2	Green				\$22.00
ECX1923-2	Yellow				\$17.50
ECX1924-2	Blue				\$23.50
ECX1925-2	White				\$28.00

EATON E22 Legend Plates

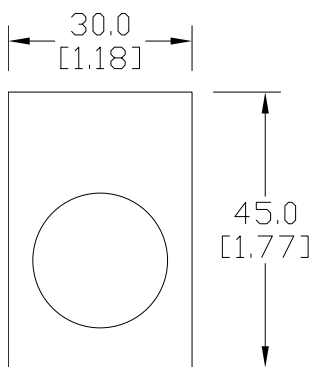
Cutler-Hammer

Legend Plates

Aluminum legend plates feature a plastisol backing to help prevent rotation of the operator.



Dimensions: mm [inches]



E22VA8

Legend Plates				
Part Number	Price	Color	Legend	Drawing Link
E22NS11	\$7.50	Black	"CLOSE"	PDF
E22NS12	\$7.50	Black	"DOWN"	PDF
E22NS13	\$7.50	Red	"EMERG. STOP"	PDF
E22NS15	\$7.50	Black	"FORWARD"	PDF
E22NS19	\$7.50	Black	"JOG"	PDF
E22NS25	\$7.50	Black	"ON"	PDF
E22NS26	\$7.50	Black	"OPEN"	PDF
E22NS30	\$7.50	Black	"REVERSE"	PDF
E22NS31	\$7.50	Black	"RUN"	PDF
E22NS33	\$7.50	Black	"START"	PDF
E22NS34	\$7.50	Red	"STOP"	PDF
E22NS35	\$7.50	Black	"UP"	PDF
E22NS36	\$7.50	Black	Blank plate	PDF
E22NS37	\$7.50	Red	Blank plate	PDF
E22NS38	\$7.50	Black	"FOR-REV"	PDF
E22NS39	\$7.50	Black	"HAND-AUTO"	PDF
E22NS41	\$7.50	Black	"JOG-RUN"	PDF
E22NS42	\$7.50	Black	"OFF-ON"	PDF
E22NS43	\$7.50	Black	"OPEN-CLOSE"	PDF
E22NS48	\$7.50	Black	"UP-DOWN"	PDF
E22NS50	\$7.50	Black	"FOR-OFF-REV"	PDF
E22NS51	\$7.50	Black	"HAND-OFF-AUTO"	PDF
E22NS80	\$7.50	Black	"POWER ON"	PDF
E22NS81	\$7.50	Black	"MOTOR RUN"	PDF
E22NS82	\$7.50	Black	"MOTOR STOP"	PDF
E22NL36	\$7.50	Black	Jumbo alum. blank plate (1.57 in wide x 1.85 in tall)	PDF
E22NL37	\$7.50	Red	Jumbo alum. blank plate (1.57 in wide x 1.85 in tall)	PDF
E22NSP77	\$7.50	Red /black	Plastic blank plate; red on one side, black on other side; either side can have letters engraved down into white plastic	PDF
E22VA8	\$12.50	Yellow	"EMERGENCY STOP" oversize yellow legend plate, 2.76" (70mm), printed	N/A

NOTE: Legend plates also work with the GCX/ECX series 22mm metal switches. The removal of the locator tab on the legend plate is required. This is easily accomplished with a round file or small grinder.