

# E22 Accessories

Cutler-Hammer

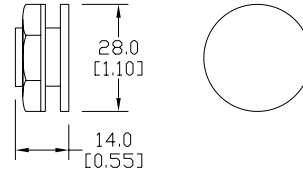
## Octagonal Wrench



## Hole Plug



Dimensions: mm [inches]



## Bulb Removal Tool



## Guard for E22 E-Stop



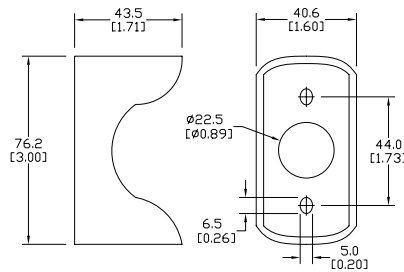
## Replacement Incandescent Bulbs



## Replacement LED Lamps



Accessories		
Part number	Description	Price
<b>HT8WRENCH</b>	Octagonal wrench for tightening back-of-panel mounting nut on all Cutler-Hammer operators.	\$19.00
<b>E22BHP</b>	Hole plug for unused 22mm panel holes.	\$14.00
<b>HT8LAMPTOOL</b>	Lamp extraction tool for removing lamps from switches, indicators and stacklights	\$10.00
<b>E22MGTA</b>	22mm yellow guard for E22LTA2QB and E22LPB2B for emergency stop applications.	\$30.50



Replacement Incandescent Bulbs				
Part Number	Rating	Description	Quantity	Price
<b>ECX1900-5</b>	6V, 1.2 watts	6V replacement bulb for 22mm switches and indicators. Miniature bayonet base T31/4.	5	\$9.50
<b>ECX1902-5</b>	24V@80mA	24V replacement bulb for 22mm switches and indicators. Miniature bayonet base T31/4.	5	\$9.50
<b>ECX1904-5</b>	130V@20mA	120V replacement bulb for 22mm switches and indicators. Miniature bayonet base T31/4.	5	\$20.00
<b>W1121</b>	120V@20mA	Replacement bulb for Cutler-Hammer E22 full voltage indicators and switches. Does not replace the LED monoblock indicators.	4	\$38.50
<b>W1226</b>	60V@20mA	Replacement bulb for Cutler-Hammer E22 resistor indicators, switches and pushbuttons. Does not replace the LED monoblock indicators.	4	\$38.50
<b>W1819</b>	24V@20mA	Replacement bulb for Cutler-Hammer E22 indicators and pushbuttons. Does not replace the LED monoblock indicators.	4	\$37.50

Replacement LED Lamps					
Part Number	Color	Rating	Description	Quantity	Price
<b>ECX1911-2</b>	Red	24V@26mA	LED replacement lamp for miniature bayonet bases Works with 22mm switches and indicators, but illumination will not be as even when used with the ECX 22mm indicators Note: Will not replace sealed Cutler-Hammer monoblock LED indicators.	2	\$17.50
<b>ECX1912-2</b>	Green				\$22.00
<b>ECX1913-2</b>	Yellow				\$17.50
<b>ECX1914-2</b>	Blue				\$23.50
<b>ECX1915-2</b>	White				\$28.00
<b>ECX1921-2</b>	Red	120V@5mA			\$17.50
<b>ECX1922-2</b>	Green				\$22.00
<b>ECX1923-2</b>	Yellow				\$17.50
<b>ECX1924-2</b>	Blue				\$23.50
<b>ECX1925-2</b>	White				\$28.00

# EATON E22 Legend Plates

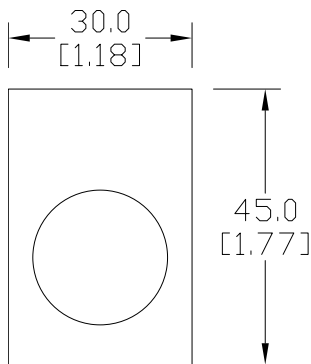
Cutler-Hammer

## Legend Plates

Aluminum legend plates feature a plastisol backing to help prevent rotation of the operator.



### Dimensions: mm [inches]



**E22VA8**

Legend Plates				
Part Number	Price	Color	Legend	Drawing Link
<a href="#">E22NS11</a>	\$7.50	Black	"CLOSE"	<a href="#">PDF</a>
<a href="#">E22NS12</a>	\$7.50	Black	"DOWN"	<a href="#">PDF</a>
<a href="#">E22NS13</a>	\$7.50	Red	"EMERG. STOP"	<a href="#">PDF</a>
<a href="#">E22NS15</a>	\$7.50	Black	"FORWARD"	<a href="#">PDF</a>
<a href="#">E22NS19</a>	\$7.50	Black	"JOG"	<a href="#">PDF</a>
<a href="#">E22NS25</a>	\$7.50	Black	"ON"	<a href="#">PDF</a>
<a href="#">E22NS26</a>	\$7.50	Black	"OPEN"	<a href="#">PDF</a>
<a href="#">E22NS30</a>	\$7.50	Black	"REVERSE"	<a href="#">PDF</a>
<a href="#">E22NS31</a>	\$7.50	Black	"RUN"	<a href="#">PDF</a>
<a href="#">E22NS33</a>	\$7.50	Black	"START"	<a href="#">PDF</a>
<a href="#">E22NS34</a>	\$7.50	Red	"STOP"	<a href="#">PDF</a>
<a href="#">E22NS35</a>	\$7.50	Black	"UP"	<a href="#">PDF</a>
<a href="#">E22NS36</a>	\$7.50	Black	Blank plate	<a href="#">PDF</a>
<a href="#">E22NS37</a>	\$7.50	Red	Blank plate	<a href="#">PDF</a>
<a href="#">E22NS38</a>	\$7.50	Black	"FOR-REV"	<a href="#">PDF</a>
<a href="#">E22NS39</a>	\$7.50	Black	"HAND-AUTO"	<a href="#">PDF</a>
<a href="#">E22NS41</a>	\$7.50	Black	"JOG-RUN"	<a href="#">PDF</a>
<a href="#">E22NS42</a>	\$7.50	Black	"OFF-ON"	<a href="#">PDF</a>
<a href="#">E22NS43</a>	\$7.50	Black	"OPEN-CLOSE"	<a href="#">PDF</a>
<a href="#">E22NS48</a>	\$7.50	Black	"UP-DOWN"	<a href="#">PDF</a>
<a href="#">E22NS50</a>	\$7.50	Black	"FOR-OFF-REV"	<a href="#">PDF</a>
<a href="#">E22NS51</a>	\$7.50	Black	"HAND-OFF-AUTO"	<a href="#">PDF</a>
<a href="#">E22NS80</a>	\$7.50	Black	"POWER ON"	<a href="#">PDF</a>
<a href="#">E22NS81</a>	\$7.50	Black	"MOTOR RUN"	<a href="#">PDF</a>
<a href="#">E22NS82</a>	\$7.50	Black	"MOTOR STOP"	<a href="#">PDF</a>
<a href="#">E22NL36</a>	\$7.50	Black	Jumbo alum. blank plate (1.57 in wide x 1.85 in tall)	<a href="#">PDF</a>
<a href="#">E22NL37</a>	\$7.50	Red	Jumbo alum. blank plate (1.57 in wide x 1.85 in tall)	<a href="#">PDF</a>
<a href="#">E22NSP77</a>	\$7.50	Red /black	Plastic blank plate; red on one side, black on other side; either side can have letters engraved down into white plastic	<a href="#">PDF</a>
<a href="#">E22VA8</a>	\$12.50	Yellow	"EMERGENCY STOP" oversize yellow legend plate, 2.76" (70mm), printed	N/A

**NOTE:** Legend plates also work with the GCX/ECX series 22mm metal switches. The removal of the locator tab on the legend plate is required. This is easily accomplished with a round file or small grinder.