













Cutler-Hammer

# Enhanced 50 Series Photoelectric Sensors Connector Cables

Note: Cutler-Hammer parts available for sale to North America locations only.

Enhanced 50 Series Cables Selection Chart				
Part Number	Price	Description	Gauge	Pin-Out Diagram
<a href="#">CSDS4A4CY2202</a>	\$32.00	DC Euro (Micro) connector cable for quick-disconnect photoelectric sensors, straight female, DC 4-pin/4-wire, PVC, 6 feet (2 meter) length	22	 1-Brown 2-White 3-Blue 4-Black
<a href="#">CSDS4A4CY2205</a>	\$33.00	DC Euro (Micro) connector cable for quick-disconnect photoelectric sensors, straight female, DC 4-pin/4-wire, PVC, 16.4 feet (5 meter) length	22	 1-Brown 2-White 3-Blue 4-Black
<a href="#">CSAS4F4CY2202</a>	\$36.00	AC Micro connector cable for quick-disconnect photoelectric sensors, straight female, AC 4-pin/4-wire, PVC, 6 feet (2 meter) length, 1/2" - 20 UNF thread	22	 1-Red/Black 2-Red/White 3-Red 4-Green
<a href="#">CSAS4F4CY2205</a>	\$37.00	AC Micro connector cable for quick-disconnect photoelectric sensors, straight female, AC 4-pin/4-wire, PVC, 16.4 feet (5 meter) length, 1/2" - 20 UNF thread	22	 1-Red/Black 2-Red/White 3-Red 4-Green
<a href="#">CSAS5A5CY2202</a>	\$45.50	AC Micro connector cable for quick-disconnect photoelectric sensors, straight female, AC 5-pin/5-wire, PVC, 6 feet (2 meter) length, 1/2" - 20 UNF thread	22	 1-Brown 2-Blue 3-Gray 4-Black 5-White
<a href="#">CSAS5A5CY2205</a>	\$48.00	AC Micro connector cable for quick-disconnect photoelectric sensors, straight female, AC 5-pin/5-wire, PVC, 16.4 feet (5 meter) length, 1/2" - 20 UNF thread	22	 1-Brown 2-Blue 3-Gray 4-Black 5-White
<a href="#">CSMS4A4CY1602</a>	\$49.00	Mini connector cable for quick-disconnect photoelectric sensors, straight female, 4-pin/4-wire, PVC, 6 feet (2 meter) length, 7/8" - 16 UN thread	16	 1-Black 2-Blue 3-Brown 4-White
<a href="#">CSMS4A4CY1606</a>	\$79.00	Mini connector cable for quick-disconnect photoelectric sensors, straight female, 4-pin/4-wire, PVC, 19.69 feet (6 meter) length, 7/8" - 16 UN thread	16	 1-Black 2-Blue 3-Brown 4-White
<a href="#">CSMS5A5CY1602</a>	\$57.00	Mini connector cable for quick-disconnect photoelectric sensors, straight female, 5-pin/5-wire, PVC, 6 feet (2 meter) length, 7/8" - 16 UN thread	16	 1-Black 2-Blue 3-Orange 4-Brown 5-White
<a href="#">CSMS5A5CY1606</a>	\$91.00	Mini connector cable for quick-disconnect photoelectric sensors, straight female, 5-pin/5-wire, PVC, 19.69 feet (6 meter) length, 7/8" - 16 UN thread	16	 1-Black 2-Blue 3-Orange 4-Brown 5-White

[CSDS4A4CY2205](#)[CSAS4F4CY2205](#)[CSAS5A5CY2202](#)

Connector Cables Specifications		
	Micro Style	Mini Style
<b>Jacket Material</b>	PVC	PVC
<b>Contact Material</b>	Gold-plated copper alloy	Gold-plated brass
<b>Coupling Nut Material</b>	Zinc die-cast epoxy-coat	Zinc die cast epoxy-coat
<b>O-ring</b>	Nitrile rubber	None
<b>Cable</b>	PVC insulation and jacket, stranded copper conductors	
<b>Cable Strain Relief</b>	35 pounds minimum	
<b>Voltage Rating</b>	320 V (24 VDC for LED plugs)	600 V
<b>Current Rating</b>	4A	4-pin: 10A 5-pin: 8 A
<b>Contact Resistance</b>	5mΩ max	5mΩ max
<b>Isolation Resistance</b>	1000MΩ min	100 MΩ min
<b>Protection</b>	IP67	NEMA 6P, IP68
<b>Temperature Range</b>	-25 to 90°C	-20 to 105°C
<b>Cable Diameter (3/C = 3 Conductor)</b>	22 AWG PVC: 4/C: 0.21 inch [5.3 mm] 5/C: 0.20 inch [5.1 mm]	16AWG PVC: 4/C: 0.42 inch [10.7 mm] 5/C: 0.50 inch [12.7 mm]
<b>Bend Radius</b>	Minimum recommended bend radius is 12X cable diameter	

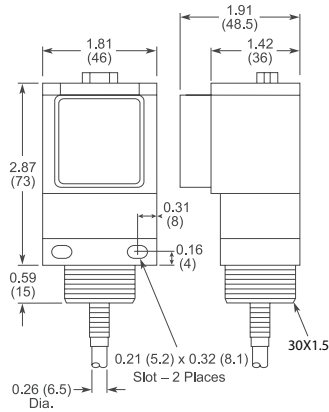
[CSMS4A4CY1602](#)[CSMS5A5CY1602](#)

# Enhanced 50 Series Photoelectric Sensors Dimensions

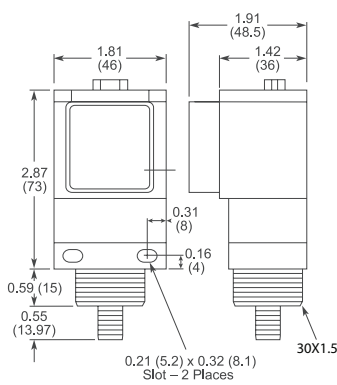
## Sensor Dimensions

inches (mm)

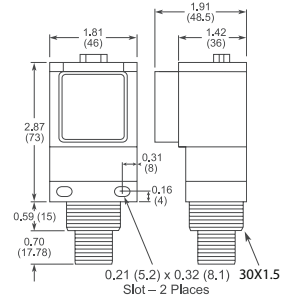
Cable and Pigtail Connector\*  
Version



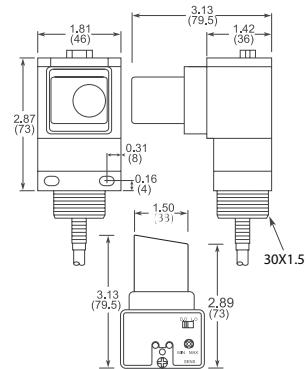
AC/DC Micro or Euro  
(Micro) Connector Versions



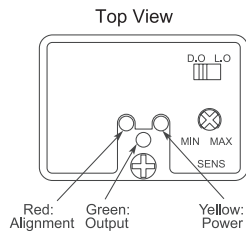
Mini Connector Versions



Clear Object Versions  
(Cable Version Shown)



\* Pigtail length: 7.5" nominal

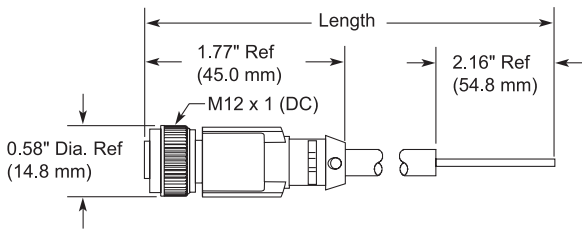


## Connector Cables Dimensions

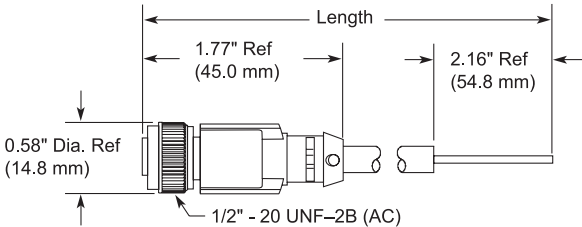
(in/mm)

### Micro Style Connector Cables

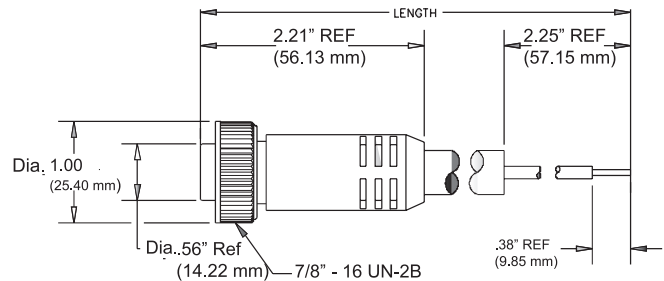
#### M12 x 1 (DC) connector cable



#### 1/2" - 20 UNF-2B (AC) connector cable



### Mini Style Connector Cables



# Accessories for 50 Series Photoelectric Sensors

## Mounting Brackets

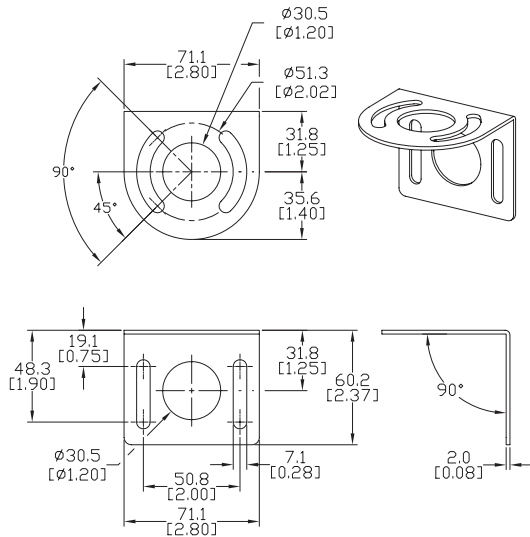
Short, tall or ball-swivel style of mounting brackets are available. All styles allow 360° rotation of the sensor.

*Note: Cutler-Hammer parts available for sale to North America locations only.*

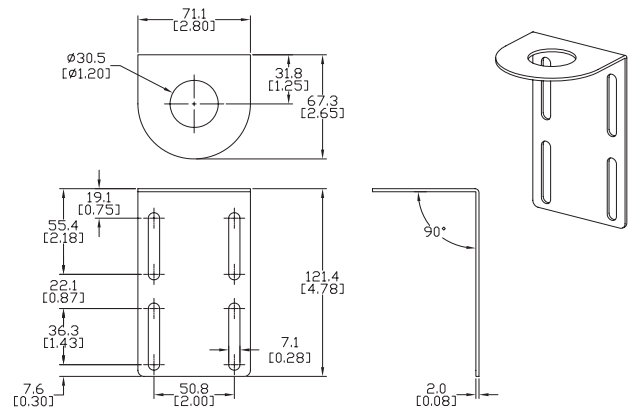
## Dimensions

mm [inches]

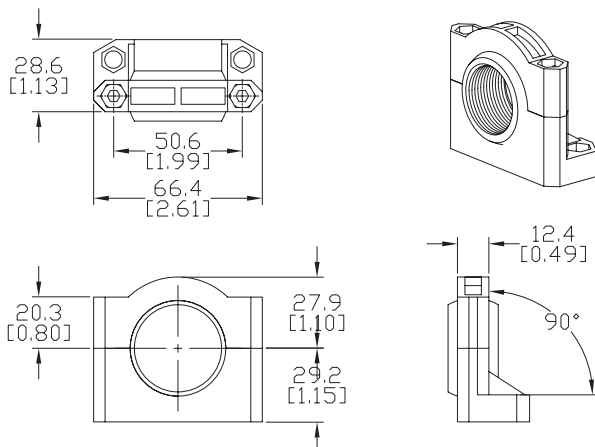
Accessories for Enhanced 50 Series Sensors			
Part Number	Price	Description	Weight [lb]
<a href="#"><u>6150E-6501</u></a>	\$7.75	Mounting bracket, right-angle, 1.5in vertical adjustment, nickel plated steel. For use with CH Enhanced 50 Series sensor.	0.20
<a href="#"><u>6150E-6502</u></a>	\$10.00	Mounting bracket, right-angle, 3.5in vertical adjustment, nickel plated steel. For use with CH Enhanced 50 Series sensor.	0.39
<a href="#"><u>6150E-6503</u></a>	\$10.00	Mounting bracket, right-angle ball swivel, 60 degree vertical and horizontal adjustment, plastic. For use with CH Enhanced 50 Series sensor. Ball swivel allows for ±30° angle.	0.11



**6150E-6501**



**6150E-6502**



**6150E-6503**