

# DW Series Analog Inductive Proximity Sensors

## M30 (30mm) Metal – Analog Output



- Voltage or current analog output
- Metal housing
- M12 quick-disconnect model
- IP67 rated
- Purchase cable separately (for quick-disconnect model)
- Lifetime warranty



### DW Series M30 Analog Inductive Proximity Selection Chart

Part Number	Price	Sensing Range	Mounting	Output	Connection	Wiring	Dimensions
<a href="#">DW-AS-509-M30-120</a>	\$121.00	0-20 mm [0-0.787 in]	Semi-flush	0-5 VDC or 1-5 mA	M12 [12mm] quick-disconnect	Diagram 1	1
<a href="#">DW-AS-509-M30-320</a>	\$121.00	0-20 mm [0-0.787 in]	Semi-flush	0-10 VDC or 4-20 mA	M12 [12mm] quick-disconnect	Diagram 1	1

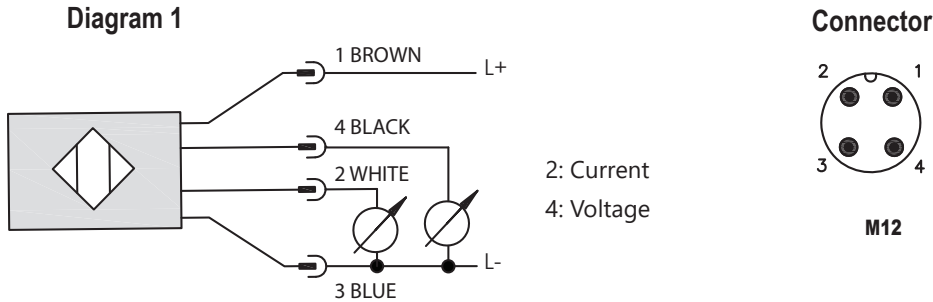
### DW Series M30 Analog Inductive Proximity Specifications

Specification	<a href="#">DW-AS-509-M30-120</a>	<a href="#">DW-AS-509-M30-320</a>
<b>Mounting Type</b>	Semi-flush	Semi-flush
<b>Nominal Distance</b>	0-20 mm [0-0.79 in]	0-20 mm [0-0.79 in]
<b>Operating Distance</b>	NA	NA
<b>Material Correction Factors</b>	See the <a href="#">Material influence table</a>	See the <a href="#">Material influence table</a>
<b>Output Type</b>	0-5 VDC or 1-5 mA	0-10 VDC or 4-20 mA
<b>Current Output Max. Load / Power Supply</b>	1 k $\Omega$ / 10VDC; 5 k / 30VDC	0.5 k $\Omega$ / 15VDC; 1 k $\Omega$ / 30VDC
<b>Voltage Output Min. Load</b>	500 $\Omega$	1k $\Omega$
<b>Operating Voltage</b>	10 to 30 VDC	15 to 30 VDC
<b>No-load Supply Current</b>	$\leq$ 10mA	$\leq$ 12mA
<b>Operating (Load) Current</b>	$\leq$ 10mA	$\leq$ 10mA
<b>Off-state (Leakage) Current</b>	NA	NA
<b>Voltage Drop</b>	$\leq$ 2.0 V	$\leq$ 2.0 V
<b>Switching Frequency</b>	NA	NA
<b>Differential Travel (% of Nominal Distance)</b>	NA	NA
<b>Repeat Accuracy</b>	$\pm$ 0.05 mm	$\pm$ 0.05 mm
<b>Ripple</b>	$\leq$ 20%	$\leq$ 20%
<b>Response Time</b>	5ms	5ms
<b>Time Delay Before Availability (tv)</b>	$\leq$ 50ms	$\leq$ 50ms
<b>Reverse Polarity Protection</b>	Yes	Yes
<b>Short-Circuit Protection</b>	Yes (switch auto-resets after overload is removed)	Yes (switch auto-resets after overload is removed)
<b>Operating Temperature</b>	-25 to +70°C [-13 to 158°F]	-25 to +70°C [-13 to 158°F]
<b>Protection Degree (DIN 40050)</b>	IEC IP67	IEC IP67
<b>Indication/Switch Status</b>	NA	NA
<b>Housing Material</b>	Chrome-plated brass	Chrome-plated brass
<b>Sensing Face Material</b>	Polybutylene Terephthalate [PBT]	Polybutylene Terephthalate [PBT]
<b>Shock/Vibration</b>	IEC 60947-5-2	IEC 60947-5-2
<b>Tightening Torque</b>	60 N•m [44 lb•ft]	60 N•m (44 lb•ft)
<b>Weight (M12 connector)</b>	135g [4.76 oz]	135g [4.76 oz]
<b>Connection</b>	M12 [12mm] connector	M12 [12mm] connector
<b>Agency Approvals</b>	UL file E239373	UL file E239373

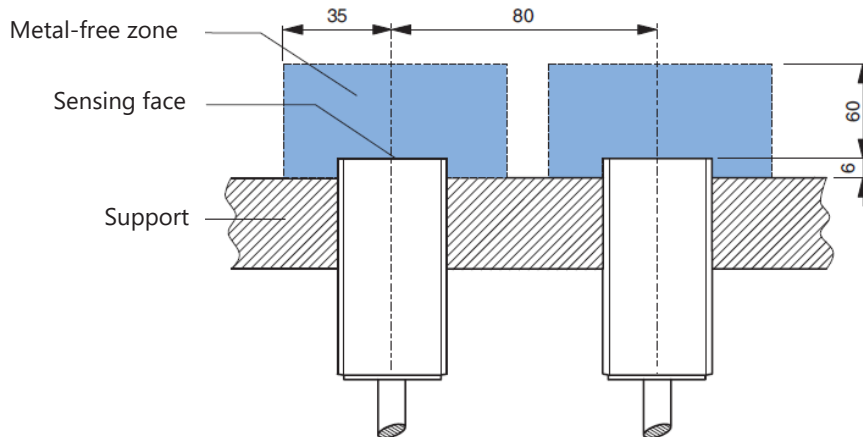
To obtain the most current agency approval information, see the Agency Approval Checklist section on the specific part number's web page.

# DW Series Analog Inductive Proximity Sensors

## Wiring Diagram



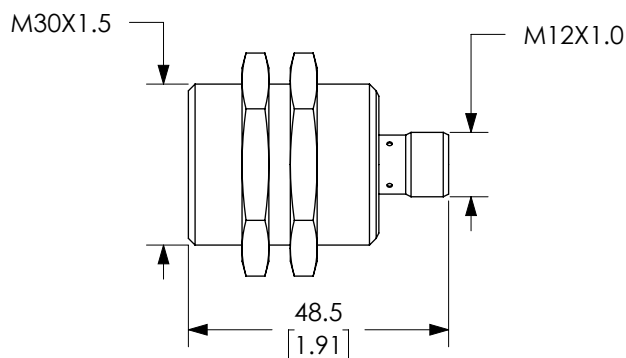
## Installation



## Dimensions

mm [inches]

Figure 1



# Accessories for 30mm Sensors

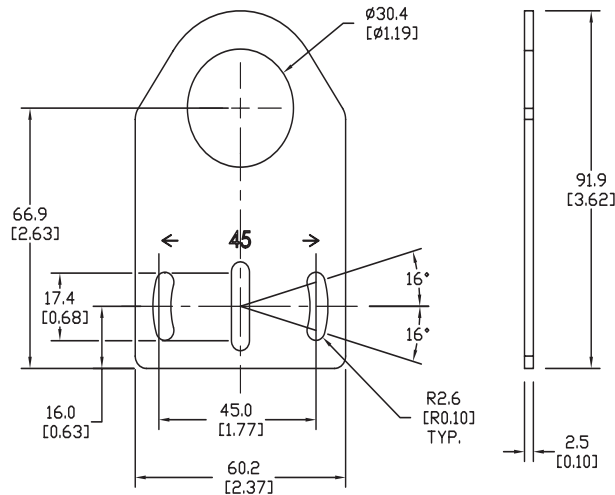
## Axial Mounting Bracket

Mounting bracket, axial, zinc-plated steel. For use with 30mm sensors. Has two mounting holes (use 5mm screws) and allows the rotation of an optical axis for right-beam-angle-adaptor sensors. Hexagonal nuts not included.

Accessories for 30mm Sensors			
Part Number	Price	Description	Weight lb [g]
<b>ST30A</b>	\$2.25	Micro Detectors mounting bracket, axial, zinc plated steel. For use with 30mm sensors.	0.18 [81.7]

### Dimensions

mm [inches]



**ST30A**

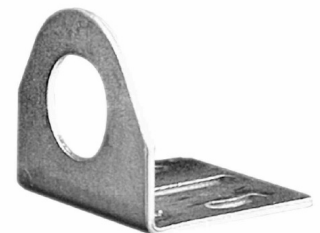
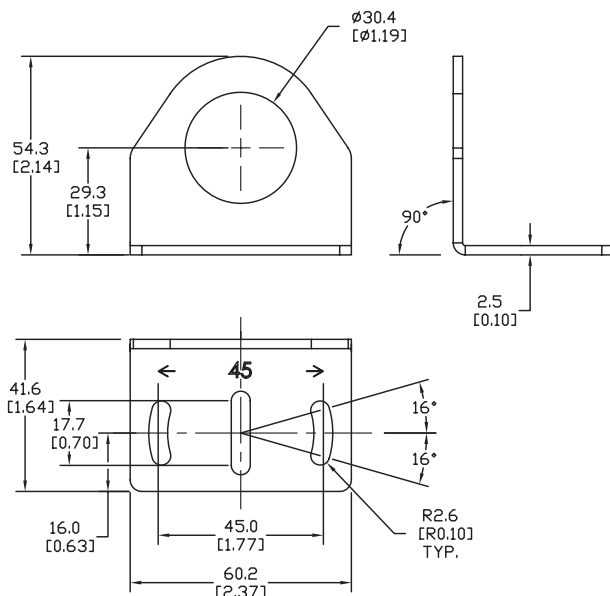
## Right-angle Mounting Bracket

Mounting bracket, right-angle, zinc-plated steel. For use with 30mm sensors. Has two mounting holes (use 5mm screws) and allows the rotation of an optical axis for axial sensors. Hexagonal nuts not included.

Accessories for 30mm Sensors			
Part Number	Price	Description	Weight lb [g]
<b>ST30C</b>	\$2.25	Micro Detectors mounting bracket, right-angle, zinc plated steel. For use with 30mm sensors.	0.18 [81.7]

### Dimensions

mm [inches]



**ST30C**

# Accessories for 30mm Sensors

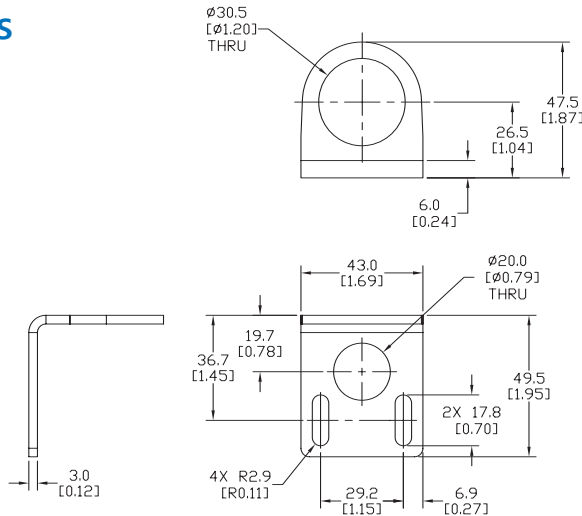
## Right-angle Mounting Bracket

Mounting bracket, right-angle, 304 stainless steel. For use with 30mm sensors.

Accessories for FW Series Sensors			
Part Number	Price	Description	Weight lb [g]
<b>ST30C6W</b>	\$5.50	AutomationDirect mounting bracket, right-angle, 304 stainless steel. For use with 30mm sensors.	0.15 (68.0)

### Dimensions

mm [inches]



**ST30C6W**

## Right-angle Swivel Mounting Systems

Mounting bracket, right-angle swivel, 360 degree vertical and horizontal adjustment, 12mm rod mount. For use with 30mm sensors. Available in all 304 stainless steel or with an aluminum head with a 304 stainless steel mounting plate.

Accessories for 30mm Sensors						
Part Number	Price	Description	Mounting Head	Mounting Plate	Drawing Link	Weight lb [g]
<b>OPT2118</b>	\$11.50	Wenglor mounting bracket, right-angle swivel, 360 degree vertical and horizontal adjustment, aluminum, 12mm rod mount. For use with 30mm sensors.	Aluminum	304 Stainless steel	<a href="#">PDF</a>	0.18 [81.7]
<b>OPT2119</b>	\$21.00	Wenglor mounting bracket, right-angle swivel, 360 degree vertical and horizontal adjustment, 304 stainless steel, 12mm rod mount. For use with 30mm sensors.	304 Stainless Steel	304 Stainless steel	<a href="#">PDF</a>	0.18 [81.7]

Note: 304 Stainless steel mounting rods sold separately: [OPT2109](#) (200mm [7.87 in] length), [OPT2110](#) (300mm [11.81 in] length), and [OPT2111](#) (500mm [19.69 in] length).



**OPT2118, OPT2119**

# Mounting Rods and Brackets

## Mounting Rods

304 Stainless steel rods for mounting swivel brackets [OPT2112](#) - [OPT2127](#). Available in three lengths: 200mm, 300mm, and 500mm. 12mm diameter.

Mounting Rods for OPT2112-2127 Swivel Mounting Brackets				
Part Number	Price	Description	Drawing Link	Weight lb (g)
<a href="#">OPT2109</a>	\$13.00	Wenglor mounting rod, 12mm diameter, 200mm length, 304 stainless steel.	<a href="#">PDF</a>	0.41 [185.97]
<a href="#">OPT2110</a>	\$16.00	Wenglor mounting rod, 12mm diameter, 300mm length, 304 stainless steel.	<a href="#">PDF</a>	0.60 [272.16]
<a href="#">OPT2111</a>	\$21.00	Wenglor mounting rod, 12mm diameter, 500mm length, 304 stainless steel.	<a href="#">PDF</a>	0.98 [444.52]



## Right-angle Mounting Bracket

Mounting bracket, right-angle, nickel-plated brass. For use with 12mm mounting rods [OPT2109](#), [OPT2110](#) & [OPT2111](#).

Right-angle Mounting Brackets for 12mm Sensors				
Part Number	Price	Description	Drawing Link	Weight lb [g]
<a href="#">OPT2108</a>	\$16.00	Wenglor mounting bracket, right-angle, nickel-plated brass. For use with 12mm mounting rods <a href="#">OPT2109</a> , <a href="#">OPT2110</a> & <a href="#">OPT2111</a> .	<a href="#">PDF</a>	0.07 [31.8]

