



# Wiring Accessories

## Single Insulated Wire Ferrules

These tin-plated copper single insulated ferrules are designed to accommodate conductors with cross-sections ranging from 20AWG to 1AWG (0.5 to 50 mm<sup>2</sup>). Tolerances according to DIN 46228 part 4.

- Heat resistant from -5 to 105°C [23 to 221°F]
- CE / RoHS 2011/65/EU
- UL E333905
- CSA-US 1176867
- Insulating Collar: Polypropylene-fluoropolymer
- Tube: Copper (Cu-DHP)
- Tin Plating: Galvanically tin-plated, bright finish

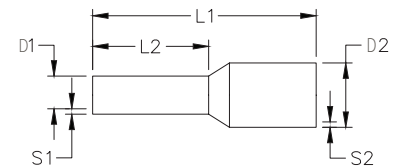


| Single Insulated Wire Ferrules |             |               |                 |                 |    |      |      |      |      |     |         |
|--------------------------------|-------------|---------------|-----------------|-----------------|----|------|------|------|------|-----|---------|
| Part Number                    |             | Cross Section |                 | Dimensions [mm] |    |      |      |      |      | Qty | Price   |
| Standard                       | DIN         | AWG           | mm <sup>2</sup> | L1              | L2 | D1   | D2   | S1   | S2   |     |         |
| V30AE000006                    | V30AE000038 | 20            | 0.5             | 14              | 8  | 1    | 2.6  | 0.15 | 0.25 | 500 | \$7.25  |
| V30AE000009                    | V30AE000041 | 18            | 0.75            | 14              | 8  | 1.2  | 2.8  | 0.15 | 0.25 | 500 | \$7.25  |
| V30AE000013                    | V30AE000045 | 18            | 1.0             | 14              | 8  | 1.4  | 3.0  | 0.15 | 0.25 | 500 | \$7.25  |
| V30AE000016                    | V30AE000048 | 16            | 1.5             | 14              | 8  | 1.7  | 3.5  | 0.15 | 0.25 | 500 | \$7.25  |
| V30AE000017                    | V30AE000049 | 16            | 1.5             | 16              | 10 | 1.7  | 3.5  | 0.15 | 0.25 | 500 | \$12.00 |
| V30AE000052                    | V30AE000052 | 14            | 2.5             | 15              | 8  | 2.2  | 4.2  | 0.15 | 0.25 | 500 | \$9.00  |
| V30AE000053                    | V30AE000053 | 14            | 2.5             | 19              | 12 | 2.2  | 4.2  | 0.15 | 0.25 | 500 | \$14.00 |
| V30AE000055                    | V30AE000055 | 12            | 4               | 18              | 10 | 2.8  | 4.8  | 0.2  | 0.3  | 500 | \$13.00 |
| V30AE000056                    | V30AE000056 | 12            | 4               | 20              | 12 | 2.8  | 4.8  | 0.2  | 0.3  | 500 | \$16.50 |
| V30AE000025                    | V30AE000058 | 10            | 6               | 20              | 12 | 3.5  | 6.3  | 0.2  | 0.3  | 100 | \$3.50  |
| V30AE000026                    | V30AE000059 | 10            | 6               | 26              | 18 | 3.5  | 6.3  | 0.2  | 0.3  | 100 | \$4.75  |
| V30AE000027                    | V30AE000060 | 8             | 10              | 22              | 12 | 4.5  | 7.6  | 0.2  | 0.4  | 100 | \$4.75  |
| V30AE000028                    | V30AE000061 | 8             | 10              | 28              | 18 | 4.5  | 7.6  | 0.2  | 0.4  | 100 | \$5.25  |
| V30AE000029                    | V30AE000062 | 6             | 16              | 22              | 12 | 5.8  | 8.8  | 0.2  | 0.4  | 100 | \$5.25  |
| V30AE000030                    | V30AE000063 | 6             | 16              | 28              | 18 | 5.8  | 8.8  | 0.2  | 0.4  | 100 | \$8.00  |
| V30AE000031                    | V30AE000064 | 4             | 25              | 30              | 16 | 7.3  | 11.2 | 0.2  | 0.4  | 50  | \$6.50  |
| V30AE000033*                   | V30AE000067 | 2             | 35              | 30              | 16 | 8.3  | 12.7 | 0.2  | 0.4  | 50  | \$8.50  |
| V30AE000035                    | V30AE000070 | 1/0           | 50              | 36              | 20 | 10.3 | 15   | 0.3  | 0.5  | 50  | \$12.00 |

\* Not UL Certified



| Available Colors |       |
|------------------|-------|
| Orange           | White |
| Blue             | Ivory |
| Black            | Green |
| Gray             | Brown |
| Yellow           | Beige |
| Red              | Olive |



## Twin Insulated Wire Ferrules

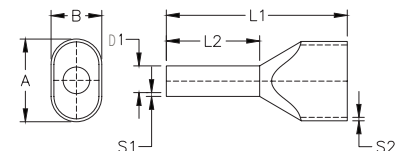
These tin-plated copper twin insulated ferrules are designed to accommodate conductors with cross-sections ranging from 20 AWG to 6 AWG (0.5 to 16 mm<sup>2</sup>). Tolerances according to DIN 46228 part 4.

- Heat resistant from -5 to 105°C [23 to 221°F]
- CE / RoHS 2011/65/EU
- UL E333905
- CSA-US 1176867
- Insulating Collar: Polypropylene-fluoropolymer
- Tube: Copper (Cu-DHP)
- Tin Plating: Galvanically tin-plated, bright finish



| Twin Insulated Wire Ferrules |             |               |                 |                 |    |     |      |     |      |     |       |         |
|------------------------------|-------------|---------------|-----------------|-----------------|----|-----|------|-----|------|-----|-------|---------|
| Part Number                  |             | Cross Section |                 | Dimensions [mm] |    |     |      |     |      | Qty | Price |         |
| Standard                     | DIN         | AWG           | mm <sup>2</sup> | L1              | L2 | D1  | S1   | S2  | A    |     |       | B       |
| V30AE001134                  | V30AE001145 | 2 x 20        | 2 x 0.5         | 14              | 8  | 1.4 | 0.15 | 0.3 | 5    | 3   | 500   | \$17.50 |
| V30AE000606                  | V30AE000607 | 2 x 18        | 2 x 0.75        | 14              | 8  | 1.7 | 0.15 | 0.3 | 5.5  | 3   | 500   | \$18.00 |
| V30AE000733                  | V30AE000734 | 2 x 18        | 2 x 0.75        | 16              | 10 | 1.7 | 0.15 | 0.3 | 5.5  | 3   | 500   | \$22.00 |
| V30AE000608                  | V30AE000609 | 2 x 18        | 2 x 1           | 15              | 8  | 2   | 0.15 | 0.3 | 5.8  | 3.2 | 500   | \$18.00 |
| V30AE000735                  | V30AE000736 | 2 x 18        | 2 x 1           | 19              | 12 | 2   | 0.15 | 0.3 | 5.8  | 3.2 | 500   | \$22.00 |
| V30AE000623                  | V30AE000625 | 2 x 16        | 2 x 1.5         | 16              | 8  | 2.2 | 0.15 | 0.3 | 6.5  | 3.6 | 500   | \$18.00 |
| V30AE000737                  | V30AE000738 | 2 x 16        | 2 x 1.5         | 20              | 12 | 2.2 | 0.15 | 0.3 | 6.5  | 3.6 | 500   | \$22.00 |
| V30AE000611                  | V30AE000611 | 2 x 14        | 2 x 2.5         | 19              | 10 | 2.8 | 0.15 | 0.4 | 8    | 4.5 | 500   | \$20.00 |
| V30AE000748                  | V30AE000748 | 2 x 14        | 2 x 2.5         | 21              | 12 | 2.8 | 0.15 | 0.4 | 8    | 4.5 | 100   | \$4.25  |
| V30AE001148                  | V30AE001148 | 2 x 12        | 2 x 4           | 22              | 12 | 3.5 | 0.2  | 0.5 | 9    | 5.2 | 100   | \$10.50 |
| V30AE001139                  | V30AE001150 | 2 x 10        | 2 x 6           | 23              | 12 | 4.5 | 0.2  | 0.5 | 11.4 | 6.2 | 100   | \$12.00 |
| V30AE001141                  | V30AE001152 | 2 x 8         | 2 x 10          | 24              | 12 | 5.8 | 0.2  | 0.5 | 13.4 | 7.6 | 100   | \$16.00 |
| V30AE001143                  | V30AE001154 | 2 x 6         | 2 x 16          | 29              | 16 | 8.3 | 0.3  | 0.6 | 17.2 | 9.5 | 50    | \$9.75  |

| Available Colors |       |        |
|------------------|-------|--------|
| Orange           | Green | Gray   |
| Blue             | Ivory | Yellow |
| Black            | Red   | White  |



## Crimp Terminals

Partially insulated crimp terminals are constructed from high quality tin-plated copper and PVC. Heat resistant from -4°F [-20°C] up to +167°F [+75°C]. Flammability classification UL 94-V0.

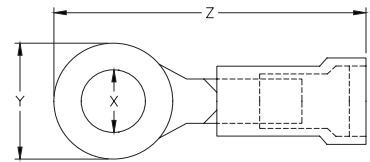


- Insulation: polyvinyl chloride
- Sleeve material: copper

### Ring Terminals



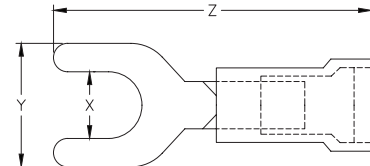
| Partially Insulated PVC Ring Terminals |               |                 |                |     |      |     |         |
|--|---------------|-----------------|----------------|-----|------|-----|---------|
| Part Number                            | Cross Section |                 | Dimension [mm] |     |      | Qty | Price   |
|  | AWG           | mm <sup>2</sup> | X              | Y   | Z    |     |         |
| V70RK004004                            | 20 - 18       | 0.5 - 1         | 4.0            | 8.0 | 22.2 | 100 | \$10.50 |
| V70RK004005                            | 20 - 18       | 0.5 - 1         | 5.0            | 8.0 | 22.2 | 100 | \$10.50 |
| V70RK004011                            | 16 - 14       | 1.5 - 2.5       | 4.0            | 8.6 | 23.0 | 100 | \$11.00 |
| V70RK004012                            | 16 - 14       | 1.5 - 2.5       | 5.0            | 8.6 | 23.0 | 100 | \$12.00 |
| V70RK004017                            | 12 - 10       | 4 - 6           | 4.0            | 9.5 | 26.9 | 100 | \$17.50 |
| V70RK004018                            | 12 - 10       | 4 - 6           | 5.0            | 9.5 | 26.9 | 100 | \$17.50 |



### Fork Terminals



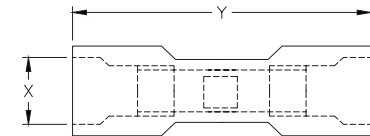
| Partially Insulated PVC Fork Terminals |               |                 |                |     |      |     |         |
|--|---------------|-----------------|----------------|-----|------|-----|---------|
| Part Number                            | Cross Section |                 | Dimension [mm] |     |      | Qty | Price   |
|  | AWG           | mm <sup>2</sup> | X              | Y   | Z    |     |         |
| V70GK004003                            | 20 - 18       | 0.5 - 1         | 4.0            | 7.3 | 22.3 | 100 | \$10.50 |
| V70GK004004                            | 20 - 18       | 0.5 - 1         | 5.0            | 8.0 | 21.7 | 100 | \$11.00 |
| V70GK004008                            | 16 - 14       | 1.5 - 2.5       | 4.0            | 7.3 | 22.3 | 100 | \$10.50 |
| V70GK004009                            | 16 - 14       | 1.5 - 2.5       | 5.0            | 8.1 | 22.3 | 100 | \$12.00 |
| V70GK004011                            | 12 - 10       | 4 - 6           | 4.0            | 9.1 | 25.8 | 100 | \$16.00 |
| V70GK004012                            | 12 - 10       | 4 - 6           | 5.0            | 9.1 | 25.8 | 100 | \$16.00 |



### Butt Connectors



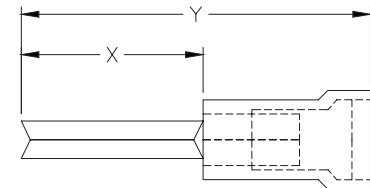
| Fully Insulated PVC Butt Connectors |               |                 |                |      |     |         |
|-------------------------------------|---------------|-----------------|----------------|------|-----|---------|
| Part Number                         | Cross Section |                 | Dimension [mm] |      | Qty | Price   |
|                                     | AWG           | mm <sup>2</sup> | X              | Y    |     |         |
| V70SV004001                         | 20 - 18       | 0.5 - 1         | 5.4            | 26.0 | 100 | \$11.00 |
| V70SV004002                         | 16 - 14       | 1.5 - 2.5       | 6.1            | 26.0 | 100 | \$12.50 |
| V70SV004003                         | 12 - 10       | 4 - 6           | 8.0            | 26.0 | 100 | \$18.00 |



### Pin Terminals



| Partially Insulated PVC Pin Terminals |               |                 |                |      |     |         |
|---------------------------------------|---------------|-----------------|----------------|------|-----|---------|
| Part Number                           | Cross Section |                 | Dimension [mm] |      | Qty | Price   |
|                                       | AWG           | mm <sup>2</sup> | X              | Y    |     |         |
| V70SS004001                           | 20 - 18       | 0.5 - 1         | 12.0           | 23.3 | 100 | \$12.00 |
| V70SS004002                           | 16 - 14       | 1.5 - 2.5       | 12.0           | 23.4 | 100 | \$12.50 |
| V70SS004003                           | 12 - 10       | 4 - 6           | 14.0           | 28.2 | 100 | \$19.00 |



Note: Dimensions are approximate. Please visit our website [www.AutomationDirect.com](http://www.AutomationDirect.com) for complete engineering drawings.



# Wiring Accessories

## Disconnect Terminals

Disconnect terminals are constructed from copper-enhanced PVC and brass. Heat resistant from -4°F [-20°C] up to +167°F [+75°C]. Flammability classification UL 94-V0.

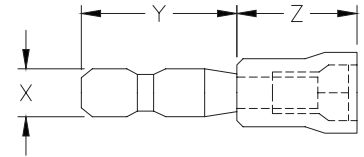
- Insulation: polyvinyl chloride strengthened with copper
- Sleeve material: brass



### Male Bullet Disconnect Terminals



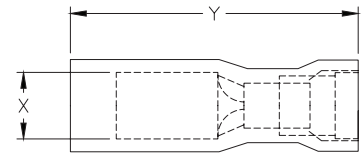
| Partially Insulated Male Bullet Disconnect Terminals |               |                 |                |      |      |     |         |
|--|---------------|-----------------|----------------|------|------|-----|---------|
| Part Number  | Cross Section |                 | Dimension [mm] |      |      | Qty | Price   |
|  | AWG           | mm <sup>2</sup> | X              | Y    | Z    |     |         |
| V70RS004001  | 20 - 18       | 0.5 - 1         | 4.0            | 11.3 | 9.8  | 100 | \$9.75  |
| V70RS004002  | 16 - 14       | 1.5 - 2.5       | 5.0            | 11.8 | 11.7 | 100 | \$11.00 |
| V70RS004003  | 12 - 10       | 4 - 6           | 5.0            | 11.0 | 10.2 | 100 | \$12.50 |



### Female Bullet Disconnect Terminals



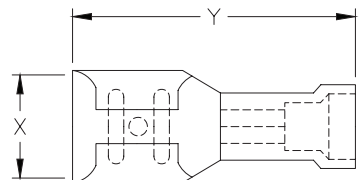
| Fully Insulated Female Bullet Disconnect Terminals |               |                 |                |      |     |         |  |
|--|---------------|-----------------|----------------|------|-----|---------|--|
| Part Number  | Cross Section |                 | Dimension [mm] |      | Qty | Price   |  |
|  | AWG           | mm <sup>2</sup> | X              | Y    |     |         |  |
| V70RV004001  | 20 - 18       | 0.5 - 1         | 4.0            | 23.9 | 100 | \$12.50 |  |
| V70RV004002  | 16 - 14       | 1.5 - 2.5       | 5.0            | 23.9 | 100 | \$12.50 |  |
| V70RV004003  | 12 - 10       | 4 - 6           | 5.0            | 27.8 | 100 | \$22.50 |  |



### Partially Insulated PVC Female Disconnect Terminals



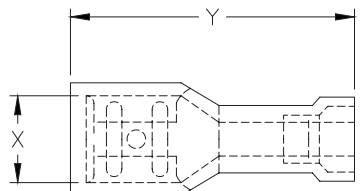
| Partially Insulated Female Disconnect Terminals |               |                 |                |      |     |         |  |
|---|---------------|-----------------|----------------|------|-----|---------|--|
| Part Number                                     | Cross Section |                 | Dimension [mm] |      | Qty | Price   |  |
|   | AWG           | mm <sup>2</sup> | X              | Y    |     |         |  |
| V70FH004001                                     | 20 - 18       | 0.5 - 1         | 2.8 x 0.5      | 19.5 | 100 | \$9.25  |  |
| V70FH004002                                     | 20 - 18       | 0.5 - 1         | 2.8 x 0.8      | 18.8 | 100 | \$9.25  |  |
| V70FH004003                                     | 20 - 18       | 0.5 - 1         | 4.8 x 0.5      | 19.5 | 100 | \$9.25  |  |
| V70FH004004                                     | 20 - 18       | 0.5 - 1         | 4.8 x 0.8      | 19.5 | 100 | \$9.25  |  |
| V70FH004005                                     | 20 - 18       | 0.5 - 1         | 6.3 x 0.8      | 20.9 | 100 | \$10.50 |  |
| V70FH004006                                     | 16 - 14       | 1.5 - 2.5       | 2.8 x 0.5      | 18.8 | 100 | \$9.75  |  |
| V70FH004007                                     | 16 - 14       | 1.5 - 2.5       | 2.8 x 0.8      | 18.8 | 100 | \$9.75  |  |
| V70FH004008                                     | 16 - 14       | 1.5 - 2.5       | 4.8 x 0.5      | 19.5 | 100 | \$9.75  |  |
| V70FH004009                                     | 16 - 14       | 1.5 - 2.5       | 4.8 x 0.8      | 19.5 | 100 | \$9.75  |  |
| V70FH004010                                     | 16 - 14       | 1.5 - 2.5       | 6.3 x 0.8      | 20.9 | 100 | \$11.00 |  |
| V70FH004011                                     | 12 - 10       | 4 - 6           | 6.3 x 0.8      | 23.8 | 100 | \$18.00 |  |



### Fully Insulated PVC Female Disconnect Terminals



| Fully Insulated Female Disconnect Terminals |               |                 |                |      |     |         |  |
|---|---------------|-----------------|----------------|------|-----|---------|--|
| Part Number                                 | Cross Section |                 | Dimension [mm] |      | Qty | Price   |  |
|   | AWG           | mm <sup>2</sup> | X              | Y    |     |         |  |
| V70FV004003                                 | 20 - 18       | 0.5 - 1         | 2.8 x 0.5      | 18.6 | 100 | \$12.00 |  |
| V70FV004004                                 | 20 - 18       | 0.5 - 1         | 2.8 x 0.8      | 18.6 | 100 | \$12.00 |  |
| V70FV004005                                 | 20 - 18       | 0.5 - 1         | 4.8 x 0.5      | 20.4 | 100 | \$12.50 |  |
| V70FV004006                                 | 20 - 18       | 0.5 - 1         | 4.8 x 0.8      | 20.3 | 100 | \$12.50 |  |
| V70FV004001                                 | 20 - 18       | 0.5 - 1         | 6.3 x 0.8      | 22.5 | 100 | \$12.50 |  |
| V70FV004007                                 | 16 - 14       | 1.5 - 2.5       | 4.8 x 0.5      | 18.8 | 100 | \$12.50 |  |
| V70FV004008                                 | 16 - 14       | 1.5 - 2.5       | 4.8 x 0.8      | 20.5 | 100 | \$12.50 |  |
| V70FV004002                                 | 16 - 14       | 1.5 - 2.5       | 6.3 x 0.8      | 22.5 | 100 | \$14.00 |  |
| V70FV004009                                 | 12 - 10       | 4 - 6           | 6.3 x 0.8      | 24.2 | 100 | \$22.00 |  |



Note: Dimensions are approximate. Please visit our website [www.AutomationDirect.com](http://www.AutomationDirect.com) for complete engineering drawings.



# Wiring Accessories

## Disconnect Terminals

Disconnect terminals are constructed from copper-enhanced PVC and brass. Heat resistant from -4°F [-20°C] up to +167°F [+75°C]. Flammability classification UL 94-V0.

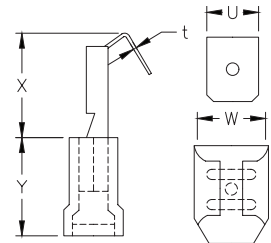
- Insulation: polyvinyl chloride strengthened with copper
- Sleeve material: brass



### Partially Insulated Piggy Back Disconnect Terminals



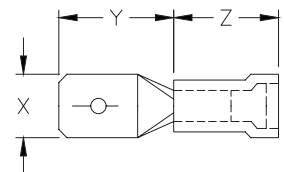
| Piggy Back Disconnect Terminals |               |                 |                |     |     |      |      |     |         |
|---------------------------------|---------------|-----------------|----------------|-----|-----|------|------|-----|---------|
| Part Number                     | Cross Section |                 | Dimension [mm] |     |     |      |      | Qty | Price   |
|                                 | AWG           | mm <sup>2</sup> | w              | u   | t   | x    | y    |     |         |
| V70FP004001                     | 20 - 18       | 0.5 - 1         | 6.6            | 6.3 | 0.8 | 13.4 | 10.0 | 100 | \$12.50 |
| V70FP004002                     | 16 - 14       | 1.5 - 2.5       | 6.6            | 6.3 | 0.8 | 13.4 | 11.0 | 100 | \$12.50 |
| V70FP004003                     | 12 - 10       | 4 - 6           | 6.6            | 6.3 | 0.8 | 13.4 | 12.0 | 100 | \$19.00 |



### Partially Insulated PVC Male Disconnect Terminals



| Partially Insulated Male Disconnect Terminals |               |                 |                |      |     |     |         |
|---|---------------|-----------------|----------------|------|-----|-----|---------|
| Part Number                                   | Cross Section |                 | Dimension [mm] |      |     | Qty | Price   |
|   | AWG           | mm <sup>2</sup> | X              | Y    | Z   |     |         |
| V70FS004001                                   | 20 - 18       | 0.5 - 1         | 2.8 x 0.5      | 8.0  | 10  | 100 | \$9.25  |
| V70FS004002                                   | 20 - 18       | 0.5 - 1         | 2.8 x 0.8      | 9.0  | 9.5 | 100 | \$9.25  |
| V70FS004003                                   | 20 - 18       | 0.5 - 1         | 4.8 x 0.5      | 9.0  | 9.9 | 100 | \$9.25  |
| V70FS004004                                   | 20 - 18       | 0.5 - 1         | 4.8 x 0.8      | 9.4  | 10  | 100 | \$9.25  |
| V70FS004005                                   | 20 - 18       | 0.5 - 1         | 6.3 x 0.8      | 10.8 | 10  | 100 | \$9.75  |
| V70FS004008                                   | 16 - 14       | 1.5 - 2.5       | 4.8 x 0.5      | 8.7  | 10  | 100 | \$9.25  |
| V70FS004009                                   | 16 - 14       | 1.5 - 2.5       | 4.8 x 0.8      | 9.2  | 10  | 100 | \$9.75  |
| V70FS004010                                   | 16 - 14       | 1.5 - 2.5       | 6.3 x 0.8      | 10.8 | 10  | 100 | \$10.00 |
| V70FS004011                                   | 12 - 10       | 4 - 6           | 6.3 x 0.8      | 10.8 | 13  | 100 | \$17.50 |



Note :Dimensions are approximate. Please visit our website [www.AutomationDirect.com](http://www.AutomationDirect.com) for complete engineering drawings.



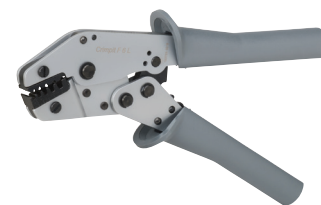
# Wiring Accessories

## Crimping Tools

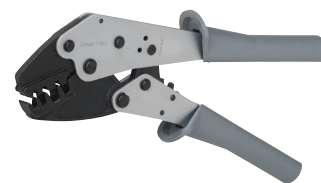
| Crimping Tools              |  |                |          |
|-----------------------------|--|----------------|----------|
| Part Number                 | Description  | Weight         | Price    |
| <a href="#">K70ZA000113</a> | Crimping tool for use with single ferrules AWG 20 - 10 [0.5 - 6 mm <sup>2</sup> ] and twin ferrules AWG 2 x 18 - 2 x 12 [2 x 0.75 - 2 x 4 mm <sup>2</sup> ]. 5 crimping positions. With and without insulating collar. Conforms to DIN 46228 part 1 and 2. | 0.74 lb [335g] | \$115.00 |
| <a href="#">K70ZA000117</a> | Crimping tool for use with single ferrules AWG 10 - 4 [6 - 25 mm <sup>2</sup> ] and twin ferrules AWG 2 x 12 - 2 x 8 [2 x 4 - 2 x 10 mm <sup>2</sup> ]. 4 crimping positions. Conforms to DIN 46228 part 1 and 4.  | 1.19 lb [540g] | \$124.00 |
| <a href="#">K70ZA000130</a> | Crimping tool for PVC-insulated terminals AWG 20 - 10 [0.5 - 6 mm <sup>2</sup> ]. 3 crimping positions.  | 1.12 lb [510g] | \$115.00 |

Note: Z&F crimping tools recommended by the ferrule manufacturer before terminating in terminal blocks, wire connectors, or end-product terminals (such as starters, etc.).

[K70ZA000113](#)



[K70ZA000117](#)



[K70ZA000130](#)



| Crimping Tools Cross Reference |                             |                             |                             |             |   |
|--------------------------------|-----------------------------|-----------------------------|-----------------------------|-------------|---|
|                                | Part Number                 |                             | K70ZA000113                 | K70ZA000117 |   |
|                                | Standard                    | DIN                         |                             |             |   |
| Single Ferrules                | <a href="#">V30AE000006</a> | <a href="#">V30AE000038</a> | X                           | —           |   |
|                                | <a href="#">V30AE000009</a> | <a href="#">V30AE000041</a> | X                           | —           |   |
|                                | <a href="#">V30AE000013</a> | <a href="#">V30AE000045</a> | X                           | —           |   |
|                                | <a href="#">V30AE000016</a> | <a href="#">V30AE000048</a> | X                           | —           |   |
|                                | <a href="#">V30AE000017</a> | <a href="#">V30AE000049</a> | X                           | —           |   |
|                                | <a href="#">V30AE000052</a> | <a href="#">V30AE000052</a> | X                           | —           |   |
|                                | <a href="#">V30AE000053</a> | <a href="#">V30AE000053</a> | X                           | —           |   |
|                                | <a href="#">V30AE000055</a> | <a href="#">V30AE000055</a> | X                           | —           |   |
|                                | <a href="#">V30AE000056</a> | <a href="#">V30AE000056</a> | X                           | —           |   |
|                                | <a href="#">V30AE000025</a> | <a href="#">V30AE000058</a> | X                           | X           |   |
|                                | <a href="#">V30AE000026</a> | <a href="#">V30AE000059</a> | X                           | X           |   |
|                                | <a href="#">V30AE000027</a> | <a href="#">V30AE000060</a> | —                           | X           |   |
|                                | <a href="#">V30AE000028</a> | <a href="#">V30AE000061</a> | —                           | X           |   |
|                                | <a href="#">V30AE000029</a> | <a href="#">V30AE000062</a> | —                           | X           |   |
|                                | <a href="#">V30AE000030</a> | <a href="#">V30AE000063</a> | —                           | X           |   |
|                                | <a href="#">V30AE000031</a> | <a href="#">V30AE000064</a> | —                           | X           |   |
|                                | <a href="#">V30AE000033</a> | <a href="#">V30AE000067</a> | —                           | —           |   |
|                                | <a href="#">V30AE000035</a> | <a href="#">V30AE000070</a> | —                           | —           |   |
|                                | Twin Ferrules               | <a href="#">V30AE001134</a> | <a href="#">V30AE001145</a> | X           | — |
|                                |                             | <a href="#">V30AE000606</a> | <a href="#">V30AE000607</a> | X           | — |
| <a href="#">V30AE000733</a>    |                             | <a href="#">V30AE000734</a> | X                           | —           |   |
| <a href="#">V30AE000608</a>    |                             | <a href="#">V30AE000609</a> | X                           | —           |   |
| <a href="#">V30AE000735</a>    |                             | <a href="#">V30AE000736</a> | X                           | —           |   |
| <a href="#">V30AE000623</a>    |                             | <a href="#">V30AE000625</a> | X                           | —           |   |
| <a href="#">V30AE000737</a>    |                             | <a href="#">V30AE000738</a> | X                           | —           |   |
| <a href="#">V30AE000611</a>    |                             | <a href="#">V30AE000611</a> | X                           | —           |   |
| <a href="#">V30AE000748</a>    |                             | <a href="#">V30AE000748</a> | X                           | —           |   |
| <a href="#">V30AE001148</a>    |                             | <a href="#">V30AE001148</a> | X                           | X           |   |
| <a href="#">V30AE001139</a>    |                             | <a href="#">V30AE001150</a> | —                           | X           |   |
| <a href="#">V30AE001141</a>    |                             | <a href="#">V30AE001152</a> | —                           | X           |   |
| <a href="#">V30AE001143</a>    | <a href="#">V30AE001154</a> | —                           | X                           |             |   |

# Wiring Accessories – Crimping Tools

## Crimping Tools Overview

Our high-quality industrial crimping tools are designed to crimp a wide range of insulated and non-insulated crimping terminals, ferrules, and connectors. They feature ergonomic handles and controlled-cycle ratcheting mechanisms to guarantee a uniform crimp every time. Choose from fixed or interchangeable die tools or tool/die sets with multiple dies.

| Interchangeable-Die Crimping Tools |  |     |          |
|------------------------------------|--|-----|----------|
| Part #                             | Description *  | Qty | Price    |
| <b><u>DN-CT-HDL</u></b>            | Crimping tool handle for DN-CT-Dx dies (dies NOT included)<br>Approximate dimensions: 9.75 x 2.52 x 0.95 in (234 x 64 x 24 mm); 16.2 oz (460g)   | 1   | \$66.00  |
| <b><u>DN-CT-D1</u></b>             | Die set for <b><u>DN-CT-HDL</u></b> ;<br>26-22 & 12-10 AWG (0.1-0.4 & 4-6 mm <sup>2</sup> ) green & yellow insulated terminals   | 1   | \$50.00  |
| <b><u>DN-CT-D2</u></b>             | Die set for <b><u>DN-CT-HDL</u></b> ; 22-14 AWG (0.5-2.5 mm <sup>2</sup> ) red & blue insulated terminals  | 1   | \$50.00  |
| <b><u>DN-CT-D3</u></b>             | Die set for <b><u>DN-CT-HDL</u></b> ; 22-10 AWG (0.5-6 mm <sup>2</sup> ) non-insulated terminals   | 1   | \$44.00  |
| <b><u>DN-CT-D4</u></b>             | Die set for <b><u>DN-CT-HDL</u></b> ; 24-8 AWG (0.25-10 mm <sup>2</sup> ) wire ferrules  | 1   | \$44.00  |
| <b><u>DN-CT-D5</u></b>             | Die set for <b><u>DN-CT-HDL</u></b> ; 6-4 AWG (16-25 mm <sup>2</sup> ) wire ferrules   | 1   | \$44.00  |
| <b><u>DN-CT-D6</u></b>             | Die set for <b><u>DN-CT-HDL</u></b> ; 2-1/0 AWG (35-50 mm <sup>2</sup> ) wire ferrules   | 1   | \$44.00  |
| <b><u>DN-CT-D7</u></b>             | Die set for <b><u>DN-CT-HDL</u></b> ; 22-10 AWG (0.5-6 mm <sup>2</sup> ) open barrel non-insulated terminals   | 1   | \$69.00  |
| <b><u>DN-CT-D8</u></b>             | Die set for <b><u>DN-CT-HDL</u></b> ; 8-pin (RJ45) modular plugs   | 1   | \$44.00  |
| <b><u>DN-CT-D9</u></b>             | Die set for <b><u>DN-CT-HDL</u></b> ; 6-pin (RJ11/RJ12) modular plugs  | 1   | \$44.00  |
| <b><u>DN-CT-SET</u></b>            | Crimping tool modular system; includes handle and three die sets<br>( <b><u>DN-CT-HDL</u></b> + <b><u>DN-CT-D2</u></b> + <b><u>DN-CT-D4</u></b> + <b><u>DN-CT-D5</u></b> )<br>The die pairs are held together for easy handling, and interchange without separate tools. | 1   | \$185.00 |



**DN-CT-HDL**  
Crimping Tool



**DN-CT-SET**  
Crimping Tool & Die Set

\* The DN-CT-xx series features a crimping tool with multiple interchangeable dies separately available. The die pairs are held together for easy handling, and can be interchanged without separate tools.



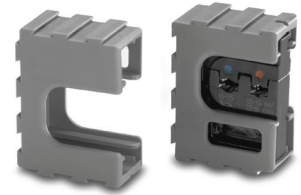
# Wiring Accessories – Crimping Tool

## DN-CT-Dx Interchangeable Crimping Dies (for DN-CT-xxx crimping tool only)

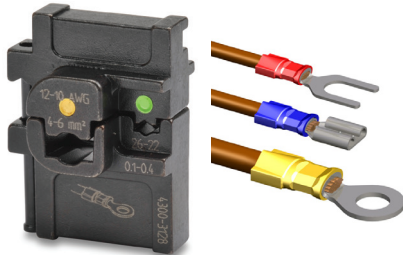
These dies are held together for easy handling, and can be interchanged without additional tools.

All DN-CT-Dx dies have been tested on leading brands of connectors to ensure quality connections.

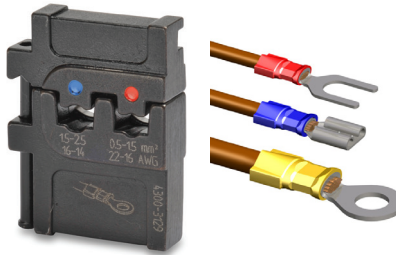
Dies come in modular holders that can be connected together when not in use.



DN-CT-Dx die & holder



**DN-CT-D1 (4300-3128)**  
Insulated Terminals & Connectors  
26–22 AWG & 12–10 AWG  
[Green & Yellow] (0.1–0.4 & 4–6 mm<sup>2</sup>)



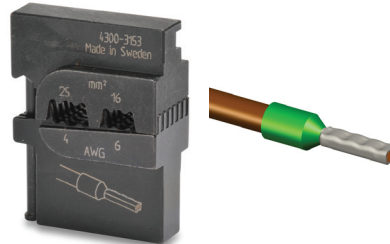
**DN-CT-D2 (4300-3129)**  
Insulated Terminals & Connectors  
22–14 AWG  
[Red & Blue] (0.5–2.5 mm<sup>2</sup>)



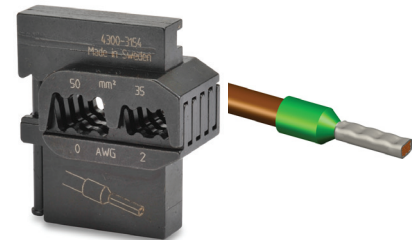
**DN-CT-D3 (4300-3142)**  
Non-Insulated Terminals & Connectors  
22–10 AWG (0.5–6 mm<sup>2</sup>)



**DN-CT-D4 (4300-3127)**  
Wire Ferrules  
24–8 AWG (0.25–10 mm<sup>2</sup>)



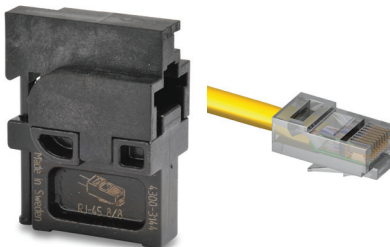
**DN-CT-D5 (4300-3153)**  
Wire Ferrules  
6–4 AWG (16–25 mm<sup>2</sup>)



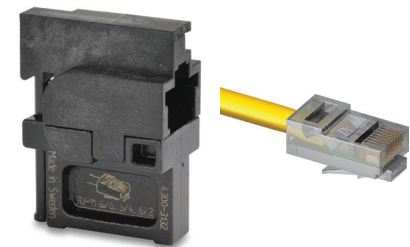
**DN-CT-D6 (4300-3154)**  
Wire Ferrules  
2–1/0 AWG (35–50 mm<sup>2</sup>)



**DN-CT-D7 (4300-3146)**  
Non-Insulated Open-Barrel Terminals  
22–10 AWG (0.5–6 mm<sup>2</sup>)



**DN-CT-D8 (4300-3144)**  
8-pin Modular Plugs  
RJ45



**DN-CT-D9 (4300-3132)**  
6-pin Modular Plugs  
RJ11/RJ12

