



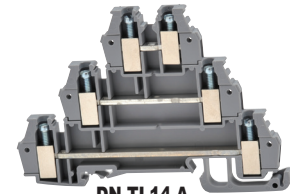
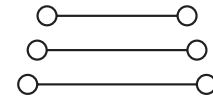
Triple-level and Sensor Terminal Blocks

Triple-level terminal blocks enable high-density wiring or simplified, low-cost sensor wiring.

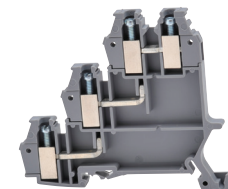
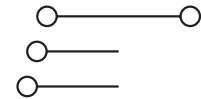
When wiring space is at a premium, use the [DN-TL14-A](#) to connect three separate circuits in only 5mm of linear DIN-rail space. The rest of our family of triple-level blocks will allow you to wire one terminal block per sensor, vs. the traditional method, which requires three different single-level blocks per sensor.

The [DN-TL14S-A](#) is the standard sensor terminal block, and the [DN-TL14SLP-A](#) and [DN-TL14SLN-A](#) provide LED indication at the terminal block when voltage is present.

- Screw connection terminal
- 35mm DIN-rail mountable
- LVD 2006/95/EC



DN-TL14-A
Series: EURO W 2.5/35



DN-TL14S-A
Series: EURO Z 2.5/35

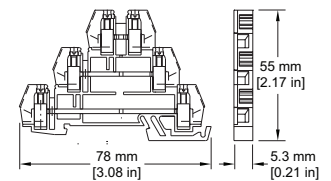
Ordering Information							
Color	Part Number	Qty	Price	Part Number	Qty	Price	
Gray	DN-TL14-A	25	\$69.00	DN-TL14S-A	25	\$61.00	
Technical Specifications							
Stripping Length	10 mm [0.39 in]			10 mm [0.39 in]			
Tightening Torque	0.5 N·m [4.5 lb-in]			0.5 N·m [4.5 lb-in]			
Density	200/m [57 pcs/ft]			200/m [57 pcs/ft]			
UL Approval*	300V	10A	26-14 AWG	300V	10A	26-14 AWG	
VDE Approval	300V	10A	2.5 mm²	300V	10A	2.5 mm²	
Operating Temperature	Ambient air temperature: -20 to 105°C [-4 to 221°F] Relative humidity: 50% max at 40°C [104°F]; 90% max at 20°C [68°F]						
SCCR Rating	10kA per Table SB4.1, 2009, UL 508A, Maximum short circuit current rating for unmarked components						
CE Conformity	CE (EN 60947-1 / EN 60947-7-1)						
Agency File #	UL E179129						
Accessories							
End Covers	DN-EC14	25	\$18.00	DN-EC14S	25	\$15.00	
Jumpers	2-pole Blue	DN-2JL14B-A	100	\$67.00	DN-2JL14B-A	100	\$67.00
		DN-2JL14B-AMN	25	\$15.00	DN-2JL14B-AMN	25	\$15.00
	3-pole Blue	DN-3JL14B-A	100	\$99.00	DN-3JL14B-A	100	\$99.00
		DN-3JL14B-AMN	25	\$23.00	DN-3JL14B-AMN	25	\$23.00
	12-pole Blue	DN-12JL14B-A	10	\$26.50	DN-12JL14B-A	10	\$26.50
	2-pole Red	DN-2JL14-A	100	\$67.00	DN-2JL14-A	100	\$67.00
		DN-2JL14-AMN	25	\$15.00	DN-2JL14-AMN	25	\$15.00
	3-pole Red	DN-3JL14-A	100	\$99.00	DN-3JL14-A	100	\$99.00
DN-3JL14-AMN		25	\$23.00	DN-3JL14-AMN	25	\$23.00	
12-pole Red	DN-12JL14-A	10	\$26.50	DN-12JL14-A	10	\$26.50	
Jumper Cutting Tool	DN-JL14CUT	1	\$112.00	DN-JL14CUT	1	\$112.00	
35mm DIN Rail	7.5 mm high	DN-R35S1	10	\$39.00	DN-R35S1	10	\$39.00
		DN-R35S1-2	2	\$11.00	DN-R35S1-2	2	\$11.00
	15mm high	DN-R35HS1	10	\$68.00	DN-R35HS1	10	\$68.00
		DN-R35HS1-2	2	\$16.50	DN-R35HS1-2	2	\$16.50
End Brackets	DN-EB35	50	\$67.00	DN-EB35	50	\$67.00	
	DN-EB35MN	20	\$31.50	DN-EB35MN	20	\$31.50	
	DN-EB35-A	50	\$47.50	DN-EB35-A	50	\$47.50	
	DN-EB35-A-10	10	\$12.00	DN-EB35-A-10	10	\$12.00	
	DN-QEB35	50	\$42.50	DN-QEB35	50	\$42.50	
	DN-QEB35-10	10	\$11.50	DN-QEB35-10	10	\$11.50	
Angled Support Bracket	DN-ASB1	50	\$107.00	DN-ASB1	50	\$107.00	
Marking Tags	DN-LAT-A series	500	various	DN-LAT-A series	500	various	

*Copper wire only

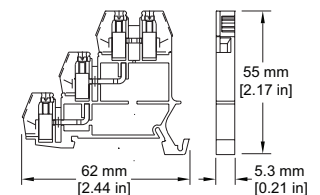
For more information on accessories, see the [DINnectors Accessories](#) section of this chapter.

Dimensions

DN-TL14-A



DN-TL14S-A

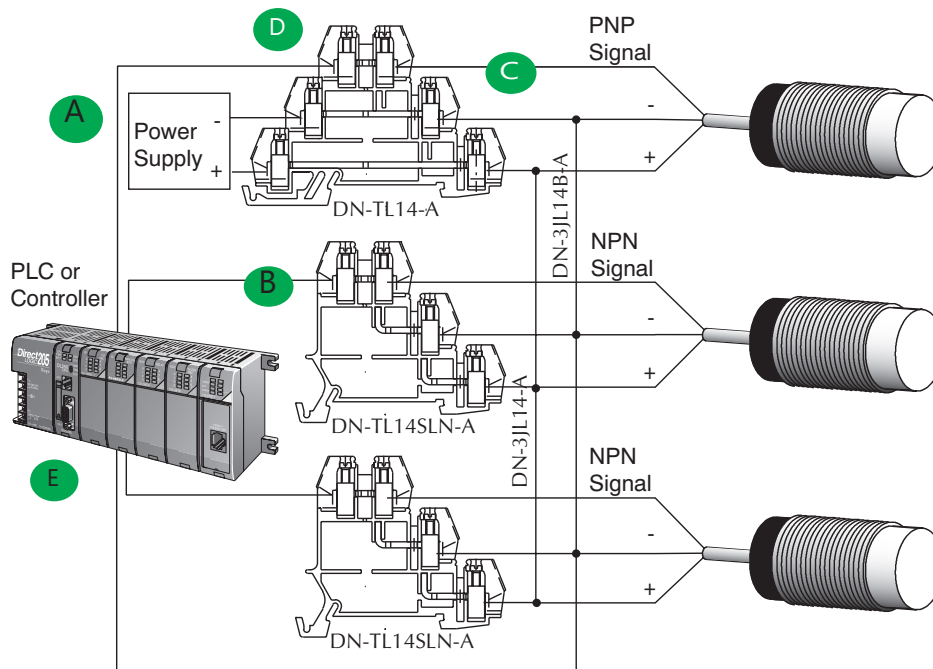




Triple-level and Sensor Terminal Blocks

Sensor wiring has never been this simple.

- **A** Wire the bottom two levels of one **DN-TL14-A** to connect your power supply to what will become a sensor +V and -V power bus.
- **B** Mount the triple-level sensor blocks next to the **DN-TL14-A**. The **DN-TL14S-A** is our standard sensor terminal block. The **DN-TL14SLP-A** gives you LED indication for PNP sensors, and the **DN-TL14SLN-A** gives you LED indication for NPN sensors.
- **C** Use the top level to connect the first sensor signal line to the PLC.
- **D** Connect the power supply terminals of the **DN-TL14-A** to the LED sensor terminal blocks by installing jumpers. This will create a +V and -V power bus on the two bottom levels of the terminals. Use an external wire to connect a group of 12 **DN-TL14-A**s to another group.
- **E** Wire the sensor signal lines through the top levels of the blocks to your PLC or controller. Remember to use the appropriate end covers for safety purposes.

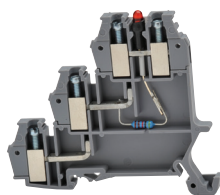
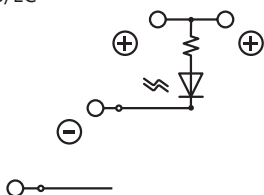


Note: Wiring schematic is for reference only. See individual I/O modules for correct wiring connections.



Triple-level and Sensor Terminal Blocks with LED

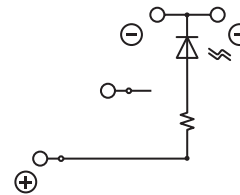
- Screw connection terminal
- 35mm DIN-rail mountable
- LVD 2006/95/EC



DN-TL14SLP-A
Series: EURO Z 2.5 LP/35



DN-TL14SLN-A
Series: EURO Z 2.5 LN/35



Ordering Information

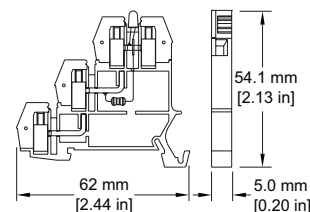
Color	Part Number	Qty	Price	Part Number	Qty	Price
Gray	DN-TL14SLP-A	25	\$120.00	DN-TL14SLN-A	25	\$120.00

Technical Specifications

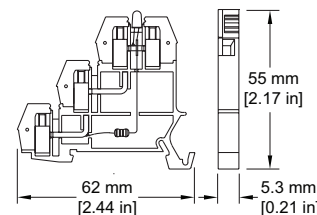
Stripping Length	10 mm [0.39 in]			10 mm [0.39 in]		
Tightening Torque	0.5 N·m [4.5 lb·in]			0.5 N·m [4.5 lb·in]		
Density	200/m [57 pcs/ft]			200/m [57 pcs/ft]		
Leakage Current	25mA@5V			25mA@5V		
LED Voltage/Resistance	12 – 24V AC/DC. 3.4 kΩ			12 – 24V AC/DC. 3.4 kΩ		
UL Approval*	300V	10A	26-14 AWG	300V	10A	26-14 AWG
VDE Approval	300V	10A	2.5 mm ²	300V	10A	2.5 mm ²
Operating Temperature	Ambient air temperature: -20 to 105°C [-4 to 221°F] Relative humidity: 50% max at 40°C [104°F]; 90% max at 20°C [68°F]					
SCCR Rating	10kA per Table SB4.1, 2009, UL 508A, Maximum short circuit current rating for unmarked components					
CE Conformity	CE (EN 60947-1 / EN 60947-7-1)					
Agency File #	UL E179129					

Dimensions

DN-TL14SLP-A



DN-TL14SLN-A



Accessories

End Cover		DN-EC14S	25	\$15.00	DN-EC14S	25	\$15.00
Jumpers	2-pole Blue	DN-2JL14B-A	100	\$67.00	DN-2JL14B-A	100	\$67.00
		DN-2JL14B-AMN	25	\$15.00	DN-2JL14B-AMN	25	\$15.00
	3-pole Blue	DN-3JL14B-A	100	\$99.00	DN-3JL14B-A	100	\$99.00
		DN-3JL14B-AMN	25	\$23.00	DN-3JL14B-AMN	25	\$23.00
	12-pole Blue	DN-12JL14B-A	10	\$26.50	DN-12JL14B-A	10	\$26.50
	2-pole Red	DN-2JL14-A	100	\$67.00	DN-2JL14-A	100	\$67.00
		DN-2JL14-AMN	25	\$15.00	DN-2JL14-AMN	25	\$15.00
	3-pole Red	DN-3JL14-A	100	\$99.00	DN-3JL14-A	100	\$99.00
DN-3JL14-AMN		25	\$23.00	DN-3JL14-AMN	25	\$23.00	
12-pole Red	DN-12JL14-A	10	\$26.50	DN-12JL14-A	10	\$26.50	
Jumper Cutting Tool		DN-JL14CUT	1	\$112.00	DN-JL14CUT	1	\$112.00
35mm DIN Rail	7.5 mm high	DN-R35S1	10	\$39.00	DN-R35S1	10	\$39.00
		DN-R35S1-2	2	\$11.00	DN-R35S1-2	2	\$11.00
	15mm high	DN-R35HS1	10	\$68.00	DN-R35HS1	10	\$68.00
		DN-R35HS1-2	2	\$16.50	DN-R35HS1-2	2	\$16.50
End Brackets		DN-EB35	50	\$67.00	DN-EB35	50	\$67.00
		DN-EB35MN	20	\$31.50	DN-EB35MN	20	\$31.50
		DN-EB35-A	50	\$47.50	DN-EB35-A	50	\$47.50
		DN-EB35-A-10	10	\$12.00	DN-EB35-A-10	10	\$12.00
		DN-QEB35	50	\$42.50	DN-QEB35	50	\$42.50
		DN-QEB35-10	10	\$11.50	DN-QEB35-10	10	\$11.50
Angled Support Bracket		DN-ASB1	50	\$107.00	DN-ASB1	50	\$107.00
Marking Tags		DN-LAT-A series	500	various	DN-LAT-A series	500	various

*Copper wire only

For more information on accessories, see the DINnectors Accessories section of this chapter.


DINnectors® Accessories

Marking Tags Cross Reference Charts - Screw-type

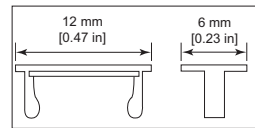
DINector Marking Tags Cross Reference - Screw-type					
<i>Block Type</i>	<i>DN-L</i>	<i>DN-LA</i>	<i>DN-LT</i>	<i>DN-LAT</i>	<i>DN-EMLBL</i>
<i>DN-T12</i>	-	X	X	-	-
<i>DN-T10</i>	X	-	X	-	-
<i>DN-T8</i>	X	-	X	-	-
<i>DN-T6</i>	X	-	X	-	-
<i>DN-T4</i>	X	-	X	-	-
<i>DN-T1/0</i>	X	-	X	-	-
<i>DN-T3/0</i>	X	-	X	-	-
<i>DN-D10</i>	X	-	X	-	-
<i>DN-D10X</i>	X	-	X	-	-
<i>DN-D10LED</i>	X	-	X	-	-
<i>DN-D10DR</i>	X	-	X	-	-
<i>DN-TL14</i>	-	-	-	X	-
<i>DN-THERM</i>	X	-	X	-	-
<i>DN-EMXM1</i>	-	X	X	-	X
<i>DN-EMXDV</i>	-	X	X	-	X
<i>DN-M10</i>	-	-	X	-	-
<i>DN-MG10</i>	-	-	X	-	-
<i>DN-G10</i>	X	-	X	-	-
<i>DN-G8</i>	X	-	X	-	-
<i>DN-G6</i>	X	-	X	-	-
<i>DN-G4</i>	X	-	X	-	-
<i>DN-G1/0</i>	X	-	X	-	-
<i>DN-F6</i>	X	-	X	-	-
<i>DN-F10</i>	X	-	X	-	-
<i>DN-DIS2</i>	-	X	X	-	-
<i>DN-DIS4</i>	X	-	X	-	-
<i>DN-FE2</i>	-	X	X	-	-
<i>DN-FE4</i>	X	-	X	-	-
<i>DN-DIS10</i>	X	-	X	-	-
<i>DN-KBD12</i>	-	X	X	-	-

Continued on next page

Marking Tags

Marking Tags DN-L Series			
Part Number	Marking Sequence	Qty	Price
DN-L50	1-50	500	\$56.00
DN-L100	51-100	500	\$56.00
DN-L150	101-150	500	\$56.00
DN-L200	151-200	500	\$56.00
DN-L250	201-250	500	\$56.00
DN-L300	251-300	500	\$56.00
DN-L350	301-350	500	\$56.00
DN-L400	351-400	500	\$56.00
DN-L450	401-450	500	\$56.00
DN-LB	Blank	500	\$38.00
DN-LS	L1, L2, L3, L, N, GND, +, -, COM,COM*	500	\$56.00

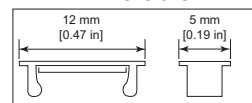
Dimensions



- The marking sequence of 50 tags (i.e. 101-150) is printed 10 times in each package of 500.
- The DN-L tags fit all DINnectors 6mm wide and wider.
- There will be a gap between tags on blocks wider than 6mm.
- Material: Thermoplastic with heat embossed black print.

Marking Tags DN-LA Series			
Part Number	Marking Sequence	Qty	Price
DN-LA100	1-100	500	\$56.00
DN-LA200	101-200	500	\$56.00
DN-LA300	201-300	500	\$56.00
DN-LA400	301-400	500	\$56.00
DN-LAB	Blank Tags	500	\$56.00
DN-LAS	L1, L2, L3, L, N, GND, +, -, COM,COM*	500	\$56.00

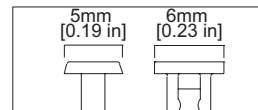
Dimensions



- The marking sequence of 100 tags (i.e. 1-100) is printed five times in each package of 500.
- The DN-LA tags fit all DINnectors 5mm wide and wider. There will be a gap between tags on blocks wider than 5mm.
- Material: Thermoplastic with heat embossed black print.

Marking Tags DN-LAT Series			
Part Number	Marking Sequence	Qty	Price
DN-LAT100-A	1-100	500	\$49.00
DN-LAT200-A	101-200	500	\$49.00
DN-LAT300-A	201-300	500	\$49.00
DN-LAT400-A	301-400	500	\$49.00
DN-LAT500-A	401-500	500	\$49.00
DN-LAT600-A	501-600	500	\$49.00
DN-LATB-A	Blank Tags	500	\$35.50
DN-LATS-A	L1, L2, L3, L, N, +, -, COM,COM*	500	\$49.00

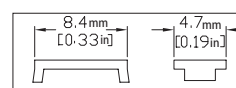
Dimensions



- The marking sequence of 500 tags (i.e. 1-100) is printed five times in each package of 500.
- Material: Thermoplastic with heat embossed black print.

Marking Tags DN-QL Series			
Part Number	Marking Sequence	Qty	Price
DN-QL100	1-100	500	\$42.50
DN-QL200	101-200	500	\$42.50
DN-QL300	201-300	500	\$42.50
DN-QL400	301-400	500	\$42.50
DN-QL500	401-500	500	\$42.50
DN-QLB	Blank Tags	500	\$36.00
DN-QLS	L1, L2, L3, L, N, +, -, COM,COM*	500	\$49.00

Dimensions



- The marking sequence of 500 (i.e. 1-100) is printed five times in each package of 500.
- Material: Thermoplastic with heat embossed black print.

DINnectors® Accessories

Terminal Marking Accessories



DN-EMLBL1



DN-EMLBL2



DN-EMLBL3

Part Number	Description	For Use With	Qty	Price
DN-EMLBL1	Blank labels	DN-EMPEG1 pin protectors for DN-xEMxx plug-in terminal blocks	100	\$9.25
DN-EMLBL2	Labels printed 1 – 12		100	\$13.00
DN-EMLBL3	Labels printed 13 – 24		100	\$13.00

Marking Pen – for terminal and wire marking tags

- Permanent
- Smudge-proof
- Waterproof
- Weatherproof
- Lightfast (won't fade)
- Dries in seconds (excellent for left-handed users)
- Dry-safe (pen can be left uncapped for days without drying out)
- Low odor ink

Part Number	Description	Qty	Price
DN-MP	Staedtler-Mars marking pen, for use with blank marking tags. Permanent Ink, fine tip.	1	\$4.50



Marking pen

Wire Marking Accessories



DN-WMTAG1 wire tags & DN-WM-x wire tag holders

Part Number	Description	For Use With	Qty	Price
DN-WMTAG1	Wire tag – blank	all DN-WM-x wire tag holders	525	\$60.00
DN-WM-1	Wire tag holder, clear, 12mm length, 0.051–0.118 in diameter; for 22–16 AWG wire	DN-WMTAG1	200	\$12.50
DN-WM-2	Wire tag holder, clear, 12mm length, 0.098–0.196 in diameter; for 16–11 AWG wire		200	\$12.50
DN-WM-3	Wire tag holder, clear, 12mm length, 0.157–0.393 in diameter; for 13–5 AWG wire		100	\$8.25
DN-WM-4	Wire tag holder, clear, 12mm length, 0.314–0.629 in diameter; for 5AWG wire		100	\$7.75