

# DINnectors<sup>®</sup> Accessories

## Steel DIN Rail (One-Meter Length)

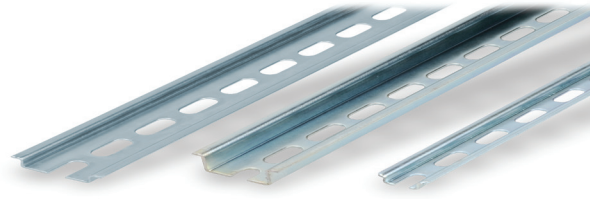
### Features

#### 35mm wide

- 7.5 mm-high rails primarily used to mount terminal blocks, relays, timers and small PLCs such as the BRX, CLICK, DirectLogic and Productivity series. 15mm-high rails for mounting larger and heavier components such as contactors and larger PLCs

#### 15mm wide

- DN-R15S1 exclusively for mounting mini terminal blocks such as the DN-M10-A

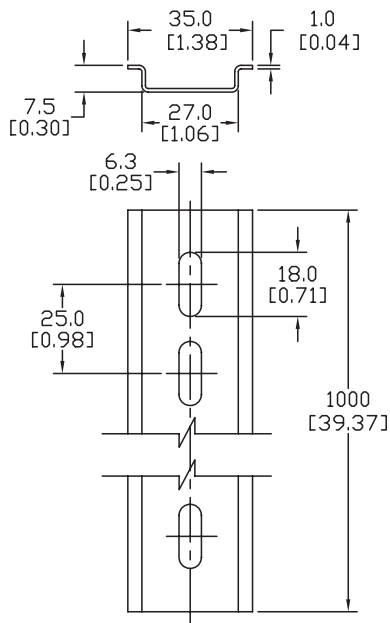


| Steel DIN Rails Specifications |  |     |         |   |     |         |   |     |         |
|--------------------------------|--|-----|---------|---|-----|---------|---|-----|---------|
|                                | Part Number  | Qty | Price   | Part Number   | Qty | Price   | Part Number   | Qty | Price   |
| DIN Rail                       | <a href="#">DN-R35S1</a>   | 10  | \$39.00 | <a href="#">DN-R35HS1</a>   | 10  | \$68.00 | <a href="#">DN-R15S1</a>  | 10  | \$36.00 |
|                                | <a href="#">DN-R35S1-2</a>   | 2   | \$11.00 | <a href="#">DN-R35HS1-2</a>   | 2   | \$16.50 | <a href="#">DN-R15S1-2</a>  | 2   | \$10.00 |
| Description                    | DINnector DIN rail, slotted, 35mm width, 7.5mm height, 1m length, plated steel. Package of 10. |     |         | DINnector DIN rail, slotted, 35mm width, 15mm height, 1m length, plated steel. Package of 10. |     |         | DINnector DIN rail, slotted, 15mm width, 5.5mm height, 1m length, plated steel. Package of 2. |     |         |
| Plating                        | Zinc-plated and chromated  |     |         |   |     |         |   |     |         |
| International Standards        | EN 60715, RoHs   |     |         |   |     |         |   |     |         |
| Suggested Mounting Screw Type  | M6   |     |         | M6  |     |         | M4  |     |         |

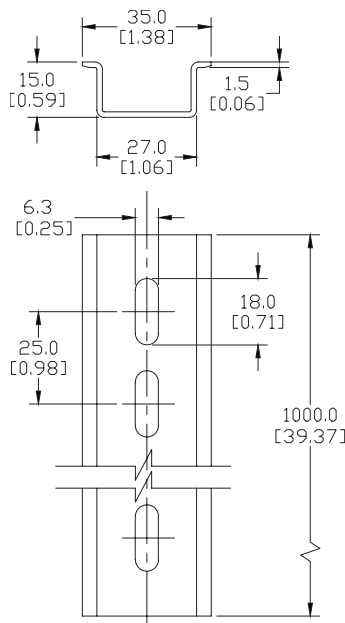
### Dimensions

mm [inches]

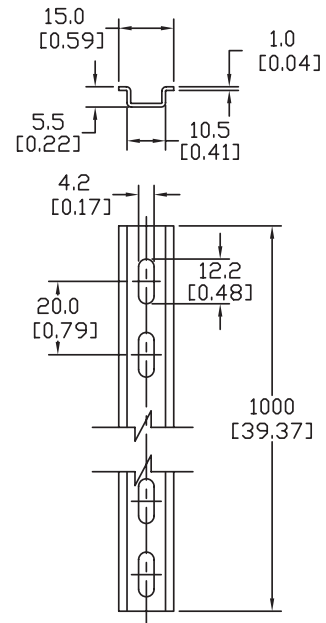
**DN-R35S1**



**DN-R35HS1**



**DN-R15S1**



See our website: [www.AutomationDirect.com](http://www.AutomationDirect.com) for complete engineering drawings

# DINnectors<sup>®</sup> Accessories

## Aluminum DIN Rail (One-Meter Length)

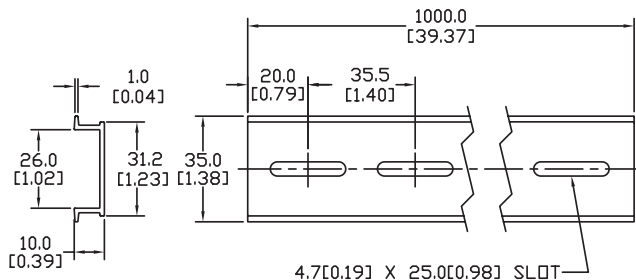
### Features

#### 35mm wide

- Non-anodized finish
- Terminal blocks only
- Maximum mounting screw #10-32 or M5
- Available in 1-meter standard length
- Quantity per pack: 2 or 10

### Dimensions

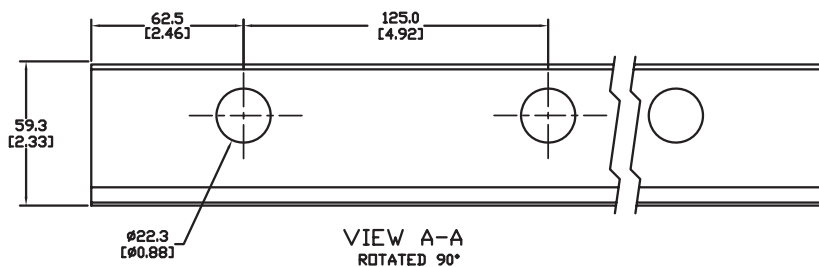
mm [inches]



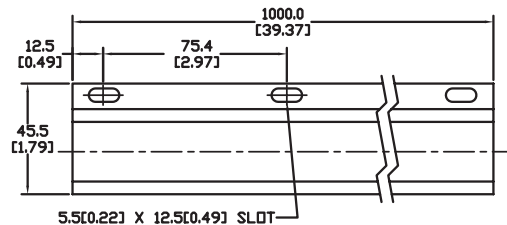
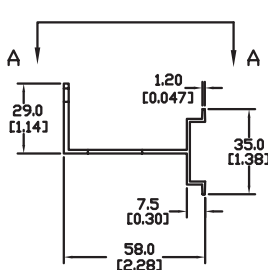
### Features

#### 35mm wide raised

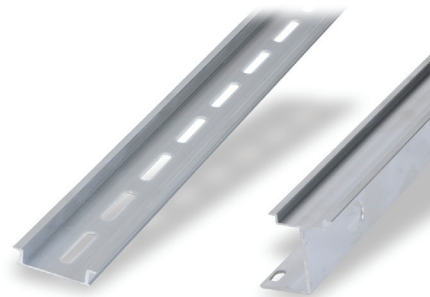
- Non-anodized finish
- Enables users to raise terminal blocks 2 1/4" above the back panel
- Terminal blocks only
- Available in 1-meter standard length
- Bushing or grommet recommended for wire access hole (example Heyco UB-875 not sold by ADC)
- Quantity per pack: 2



**DN-R35SAL2-2**



| Aluminum DIN Rails Specifications (One-Meter Length) |   |     |         |  |     |         |
|--|---|-----|---------|--|-----|---------|
|  | Part Number   | Qty | Price   | Part Number  | Qty | Price   |
| DIN Rail   | <b>DN-R35SAL1</b>   | 10  | \$60.00 | <b>DN-R35SAL2-2</b>  | 2   | \$38.00 |
|  | <b>DN-R35SAL1-2</b>   | 2   | \$16.00 |  |     |         |
| Description  | DINnector DIN rail, slotted, 35mm width, 10mm height, 1m length, aluminum. Package of 10. |     |         | DINnector DIN rail, slotted, 2in raised 35mm width, 7.5mm height, 1m length, aluminum. Package of 2. |     |         |
| International Standards                              | DIN 50960, RoHs   |     |         |  |     |         |
| Suggested Mounting Screw Type                        | #10-32 or M5  |     |         |  |     |         |



See our website: [www.AutomationDirect.com](http://www.AutomationDirect.com) for complete engineering drawings

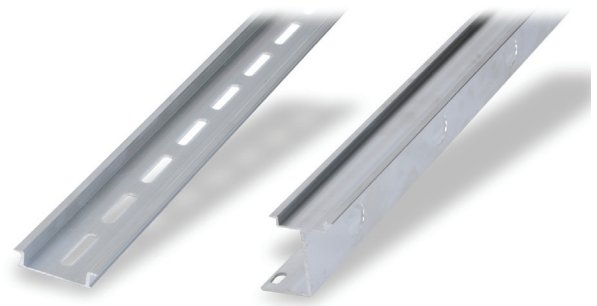
# DINnectors® Accessories

## Aluminum DIN Rail (Pre-Cut Lengths)

### Features

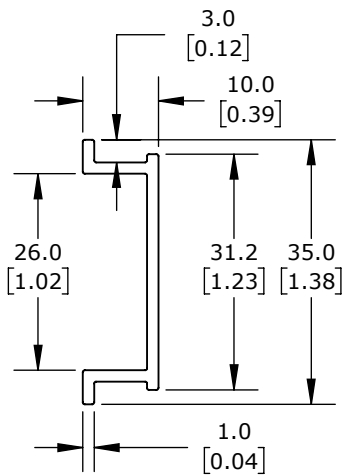
**35mm wide**

- Non-anodized finish
- Terminal blocks only
- Maximum mounting screw #10-32 or M5
- Available in variable lengths (see chart)
- Quantity per pack: 5

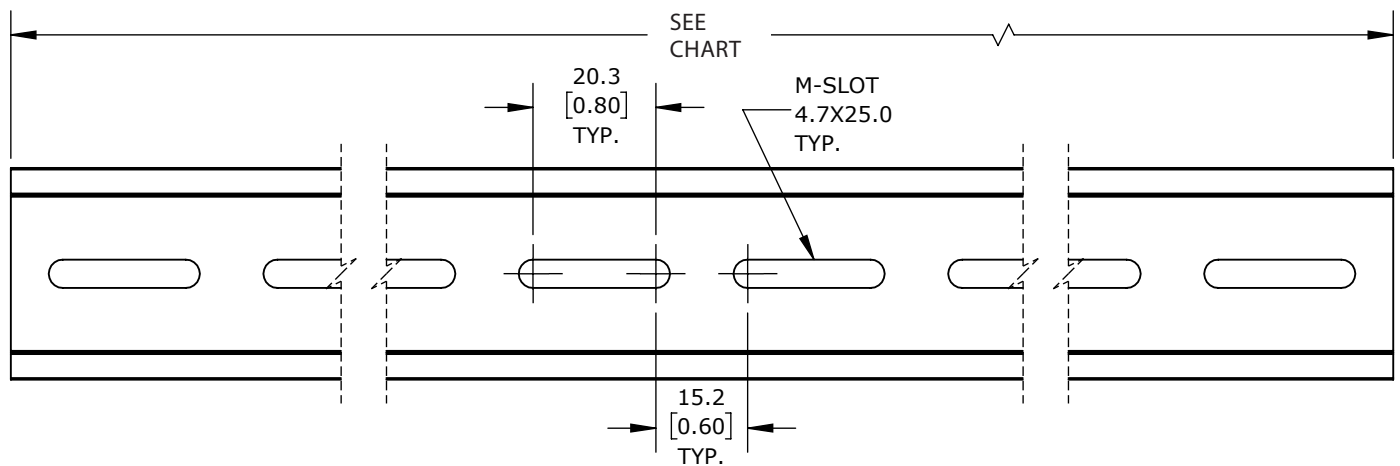


### Dimensions

mm [inches]



| Aluminum DIN Rails Specifications (Pre-Cut Lengths) |                |                 |         |
|---|----------------|-----------------|---------|
| Part Number   | Length mm [in] | Number of Slots | Price   |
| <a href="#">DN-R35SAL1-072-5</a>                    | 72 [2.83]      | 2               | \$9.75  |
| <a href="#">DN-R35SAL1-143-5</a>                    | 143 [5.63]     | 4               | \$12.00 |
| <a href="#">DN-R35SAL1-215-5</a>                    | 215 [8.46]     | 6               | \$14.00 |
| <a href="#">DN-R35SAL1-286-5</a>                    | 286 [11.26]    | 8               | \$16.50 |
| <a href="#">DN-R35SAL1-358-5</a>                    | 358 [14.09]    | 10              | \$19.00 |
| <a href="#">DN-R35SAL1-429-5</a>                    | 429 [16.89]    | 12              | \$20.50 |
| <a href="#">DN-R35SAL1-500-5</a>                    | 500 [19.69]    | 14              | \$22.00 |
| <a href="#">DN-R35SAL1-572-5</a>                    | 572 [22.52]    | 16              | \$24.50 |
| <a href="#">DN-R35SAL1-644-5</a>                    | 644 [25.35]    | 18              | \$26.00 |
| <a href="#">DN-R35SAL1-715-5</a>                    | 715 [28.15]    | 20              | \$27.00 |
| <a href="#">DN-R35SAL1-787-5</a>                    | 787 [30.98]    | 22              | \$28.50 |
| <a href="#">DN-R35SAL1-858-5</a>                    | 858 [33.78]    | 24              | \$30.50 |



See our website: [www.AutomationDirect.com](http://www.AutomationDirect.com) for complete engineering drawings

# **DINnectors** Accessories

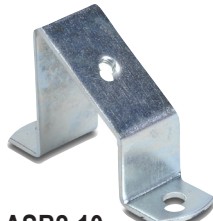
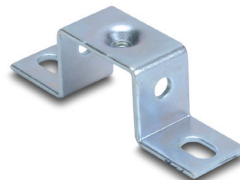
## DIN rail support brackets

- Angled support brackets raise and tilt mounting rails 30 degrees from mounting surface for easier wiring
- [DN-ASB1](#) plated steel support bracket
- [DN-ASB2-10](#) cold-rolled steel treated with galvanic zinc plating and passivation

## DIN rail mounting clips

- Snap small devices not made for mounting onto 35mm DIN rails
- Zinc-plated steel

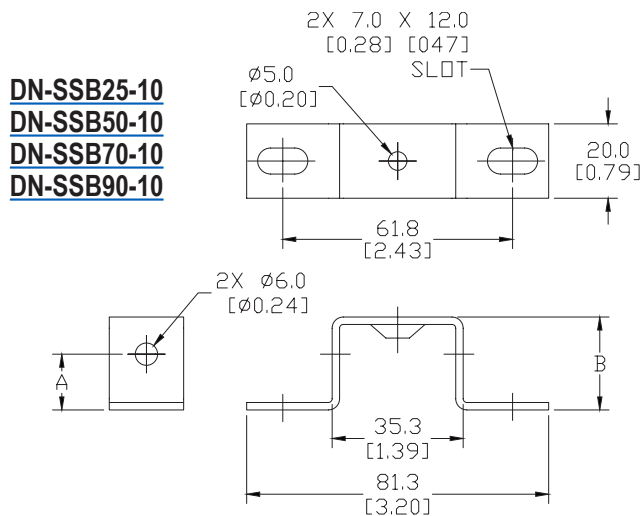
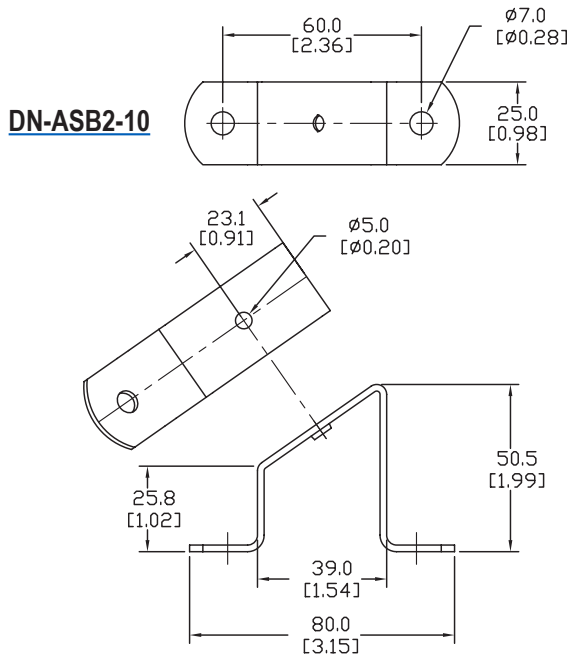
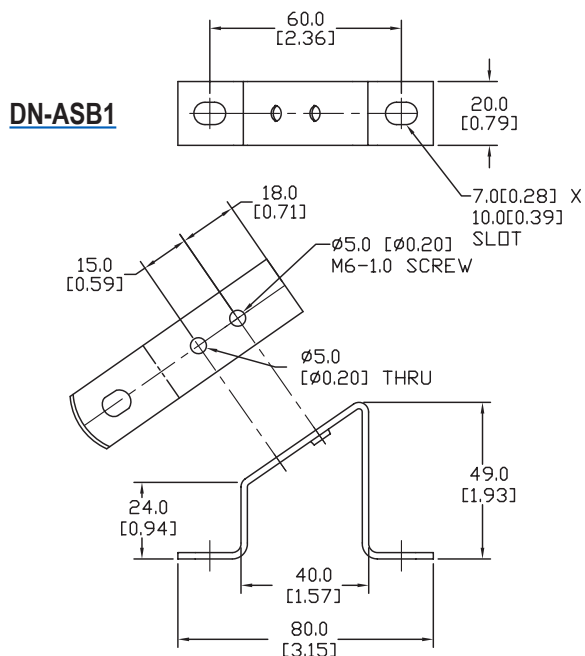
| DIN Rail Support Brackets and Mounting Clips |  |     |          |
|--|--|-----|----------|
| Part Number                                  | Description  | Qty | Price    |
| <a href="#">DN-ASB1</a>                      | 30° angled DIN rail support bracket (M6-1.0 screws not included)               | 50  | \$107.00 |
| <a href="#">DN-ASB2-10</a>                   | 30° angled DIN rail support bracket (M6-1.0 screws included)                   | 10  | \$18.00  |
| <a href="#">DN-SSB25-10</a>                  | 1" (25mm) DIN rail support bracket (M6-1.0 screws included)                    | 10  | \$24.50  |
| <a href="#">DN-SSB50-10</a>                  | 2" (50mm) DIN rail support bracket (M6-1.0 screws included)                    | 10  | \$25.50  |
| <a href="#">DN-SSB70-10</a>                  | 2.75" (70mm) DIN rail support bracket (M6-1.0 screws included)                 | 10  | \$32.00  |
| <a href="#">DN-SSB90-10</a>                  | 3.5" (90mm) DIN rail support bracket (M6-1.0 screws included)                  | 10  | \$34.50  |
| <a href="#">DN-CLIP-FM4</a>                  | DIN rail mounting clip with M4 x 0.7 mm threaded hole<br>(Screws not included) | 40  | \$66.00  |
| <a href="#">DN-CLIP-FM4-5</a>                |  | 5   | \$9.50   |
| <a href="#">DN-CLIP-FM5</a>                  | DIN rail mounting clip with M5 x 0.8 mm threaded hole<br>(Screws not included) | 40  | \$66.00  |
| <a href="#">DN-CLIP-FM5-5</a>                |  | 5   | \$9.50   |

[DN-ASB1](#)[DN-ASB2-10](#)[DN-SSB25-10](#)[DN-SSB50-10](#)[DN-SSB70-10](#)[DN-SSB90-10](#)[DN-CLIP-FM4](#)  
[DN-CLIP-FM4-5](#)[DN-CLIP-FM5](#)  
[DN-CLIP-FM5-5](#)

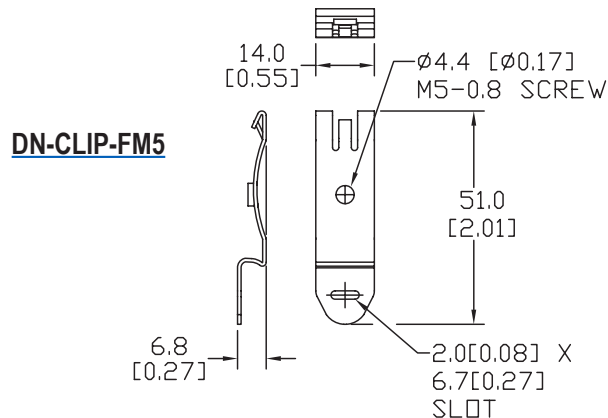
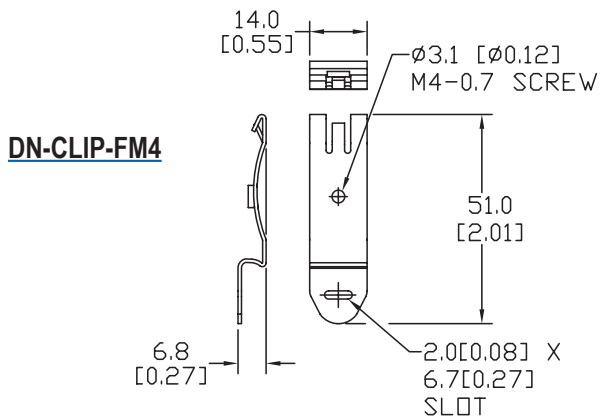
# DINnectors® Accessories

## Dimensions

mm [inches]



| DIN Rail Support Brackets |                      |                      |
|---------------------------|----------------------|----------------------|
| Part Number               | DIM A<br>mm [inches] | DIM B<br>mm [inches] |
| <b>DN-SSB25-10</b>        | 15.0 [0.59]          | 25.0 [0.98]          |
| <b>DN-SSB50-10</b>        | 40.0 [1.58]          | 50.0 [1.97]          |
| <b>DN-SSB70-10</b>        | 60.0 [2.36]          | 70.0 [2.76]          |
| <b>DN-SSB90-10</b>        | 80.0 [3.15]          | 90.0 [3.54]          |



See our website: [www.AutomationDirect.com](http://www.AutomationDirect.com) for complete engineering drawings