

# DINnectors® Accessories

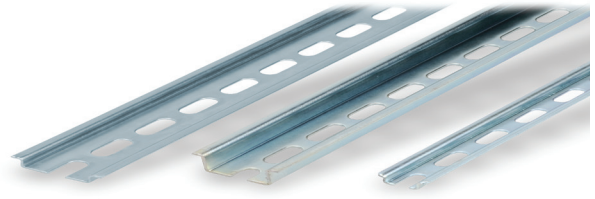
## Steel DIN Rails Features

### 35mm wide

- Available in 1-meter lengths
- 7.5 mm-high rails primarily used to mount terminal blocks, relays, timers and small PLCs such as the BRX, CLICK, DirectLogic and Productivity series. 15mm-high rails for mounting larger and heavier components such as contactors and larger PLCs

### 15mm wide

- Available in 1-meter lengths
- DN-R15S1 exclusively for mounting mini terminal blocks such as the DN-M10-A



| Steel DIN Rails Specifications |  |     |         |   |     |         |   |     |         |
|--------------------------------|--|-----|---------|---|-----|---------|---|-----|---------|
|                                | Part Number  | Qty | Price   | Part Number   | Qty | Price   | Part Number   | Qty | Price   |
| DIN Rail                       | <a href="#"><u>DN-R35S1</u></a>  | 10  | \$39.00 | <a href="#"><u>DN-R35HS1</u></a>  | 10  | \$68.00 | <a href="#"><u>DN-R15S1</u></a>   | 10  | \$36.00 |
|                                | <a href="#"><u>DN-R35S1-2</u></a>  | 2   | \$11.00 | <a href="#"><u>DN-R35HS1-2</u></a>  | 2   | \$16.50 | <a href="#"><u>DN-R15S1-2</u></a>   | 2   | \$10.00 |
| Description                    | DINnector DIN rail, slotted, 35mm width, 7.5mm height, 1m length, plated steel. Package of 10. |     |         | DINnector DIN rail, slotted, 35mm width, 15mm height, 1m length, plated steel. Package of 10. |     |         | DINnector DIN rail, slotted, 15mm width, 5.5mm height, 1m length, plated steel. Package of 2. |     |         |
| Plating                        | Zinc-plated and chromated  |     |         |   |     |         |   |     |         |
| International Standards        | EN 60715, RoHs   |     |         |   |     |         |   |     |         |
| Suggested Mounting Screw Type  | M6   |     |         | M6  |     |         | M4  |     |         |

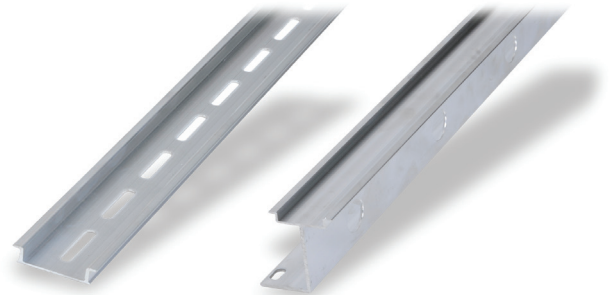
## Aluminum DIN Rail Features

### 35mm wide

- Non-anodized finish
- Zinc plating and passivation (minimum thickness 6 microns)
- Lightweight, easy to cut and deburr
- Terminal blocks only
- Maximum mounting screw #10-32 or M5
- Available in 1-meter lengths

### 35mm wide raised

- Non-anodized finish
- Zinc plating and passivation (minimum thickness 6 microns)
- Enables users to raise terminal blocks 2¼" above the back panel
- Terminal blocks only
- Available in 1-meter lengths
- Bushing or grommet recommended for wire access hole (example Heyco UB-875 not sold by ADC)



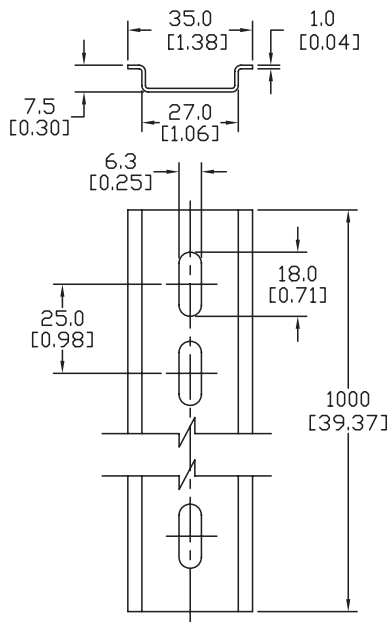
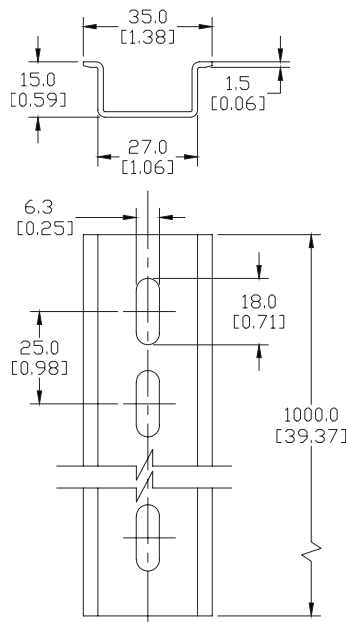
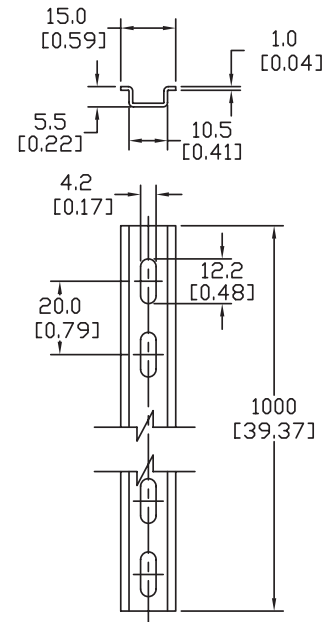
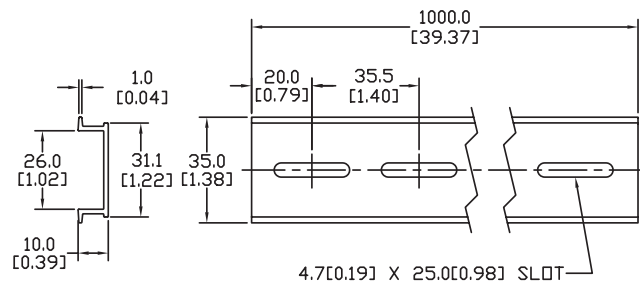
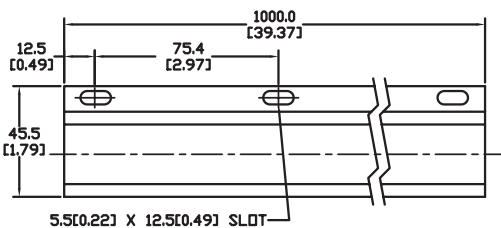
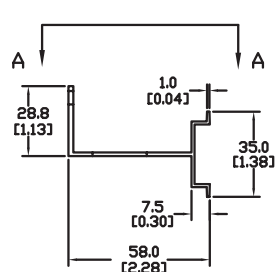
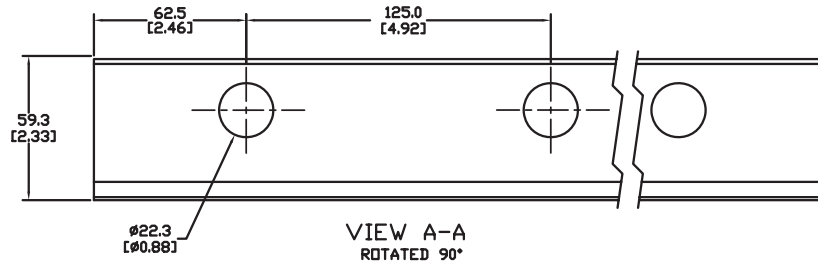
| Aluminum DIN Rails Specifications |   |     |         |  |     |         |
|-----------------------------------|---|-----|---------|--|-----|---------|
|                                   | Part Number   | Qty | Price   | Part Number  | Qty | Price   |
| DIN Rail                          | <u><a href="#">DN-R35SAL1</a></u>   | 10  | \$60.00 | <u><a href="#">DN-R35SAL2-2</a></u>  | 2   | \$38.00 |
|                                   | <u><a href="#">DN-R35SAL1-2</a></u>   | 2   | \$16.00 |  |     |         |
| Description                       | DINnector DIN rail, slotted, 35mm width, 10mm height, 1m length, aluminum. Package of 10. |     |         | DINnector DIN rail, slotted, 2in raised 35mm width, 7.5mm height, 1m length, aluminum. Package of 2. |     |         |
| Plating                           | Galvanic zinc plating, non-anodized finish  |     |         |  |     |         |
| International Standards           | DIN 50960, RoHs   |     |         |  |     |         |
| Suggested Mounting Screw Type     | #10-32 or M5  |     |         |  |     |         |



# **DINnectors® Accessories**

## Dimensions

mm [inches]

**DN-R35S1****DN-R35HS1****DN-R15S1****DN-R35SAL1  
DN-R35SAL1-2****DN-R35SAL2-2**

See our website: [www.AutomationDirect.com](http://www.AutomationDirect.com) for complete engineering drawings



# **DINnectors** Accessories

## DIN rail support brackets

- Angled support brackets raise and tilt mounting rails 30 degrees from mounting surface for easier wiring
- [DN-ASB1](#) plated steel support bracket
- [DN-ASB2-10](#) cold-rolled steel treated with galvanic zinc plating and passivation

## DIN rail mounting clips

- Snap small devices not made for mounting onto 35mm DIN rails
- Zinc plated steel

| DIN Rail Support Brackets and Mounting Clips |  |     |          |
|--|--|-----|----------|
| Part Number                                  | Description  | Qty | Price    |
| <a href="#">DN-ASB1</a>                      | 30° angled DIN rail support bracket (M6-1.0 screws not included)               | 50  | \$107.00 |
| <a href="#">DN-ASB2-10</a>                   | 30° angled DIN rail support bracket (M6-1.0 screws included)                   | 10  | \$18.00  |
| <a href="#">DN-SSB25-10</a>                  | 1" (25mm) DIN rail support bracket (M6-1.0 screws included)                    | 10  | \$24.50  |
| <a href="#">DN-SSB50-10</a>                  | 2" (50mm) DIN rail support bracket (M6-1.0 screws included)                    | 10  | \$25.50  |
| <a href="#">DN-SSB70-10</a>                  | 2.75" (70mm) DIN rail support bracket (M6-1.0 screws included)                 | 10  | \$32.00  |
| <a href="#">DN-SSB90-10</a>                  | 3.5" (90mm) DIN rail support bracket (M6-1.0 screws included)                  | 10  | \$34.50  |
| <a href="#">DN-CLIP-FM4</a>                  | DIN rail mounting clip with M4 x 0.7 mm threaded hole<br>(Screws not included) | 40  | \$66.00  |
| <a href="#">DN-CLIP-FM4-5</a>                |  | 5   | \$9.50   |
| <a href="#">DN-CLIP-FM5</a>                  | DIN rail mounting clip with M5 x 0.8 mm threaded hole<br>(Screws not included) | 40  | \$66.00  |
| <a href="#">DN-CLIP-FM5-5</a>                |  | 5   | \$9.50   |



[DN-ASB1](#)



[DN-ASB2-10](#)



[DN-SSB25-10](#)



[DN-SSB50-10](#)



[DN-SSB70-10](#)



[DN-SSB90-10](#)



[DN-CLIP-FM4](#)  
[DN-CLIP-FM4-5](#)



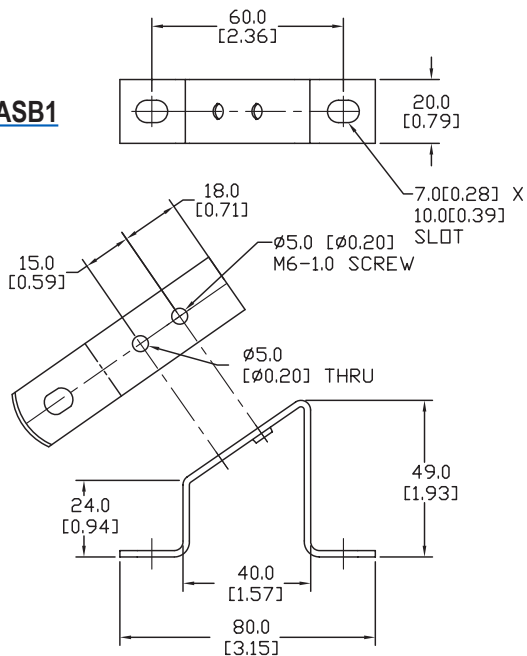
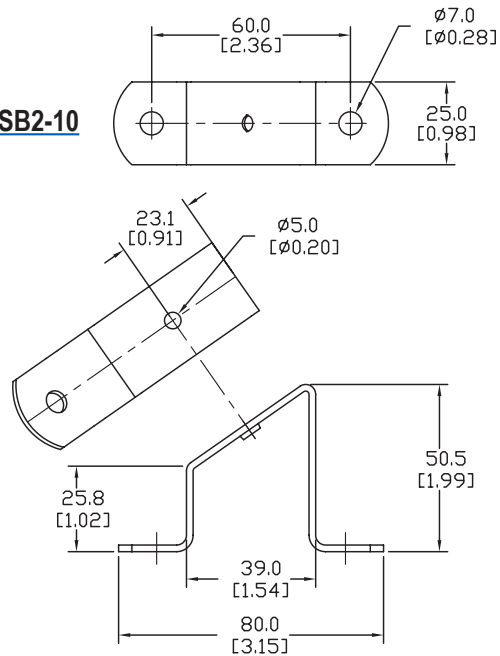
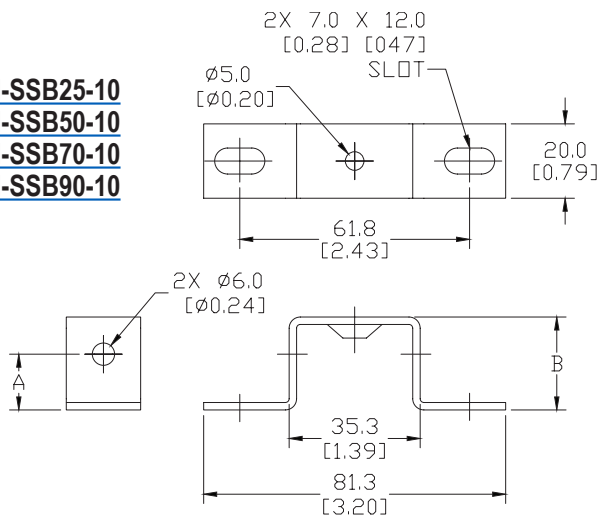
[DN-CLIP-FM5](#)  
[DN-CLIP-FM5-5](#)



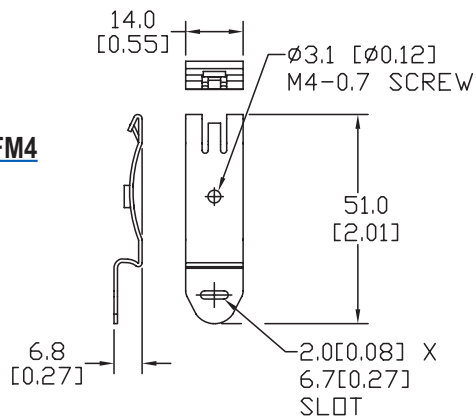
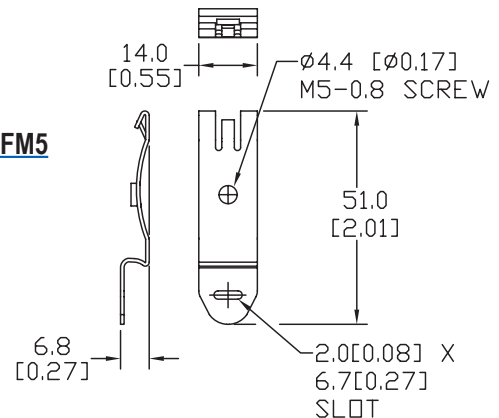
# DINnectors® Accessories

## Dimensions

mm [inches]

**DN-ASB1****DN-ASB2-10**
**DN-SSB25-10**  
**DN-SSB50-10**  
**DN-SSB70-10**  
**DN-SSB90-10**
**DIN Rail Support Brackets**

| Part Number        | DIM A<br>mm [inches] | DIM B<br>mm [inches] |
|--------------------|----------------------|----------------------|
| <b>DN-SSB25-10</b> | 15.0 [0.59]          | 25.0 [0.98]          |
| <b>DN-SSB50-10</b> | 40.0 [1.58]          | 50.0 [1.97]          |
| <b>DN-SSB70-10</b> | 60.0 [2.36]          | 70.0 [2.76]          |
| <b>DN-SSB90-10</b> | 80.0 [3.15]          | 90.0 [3.54]          |

**DN-CLIP-FM4****DN-CLIP-FM5**See our website: [www.AutomationDirect.com](http://www.AutomationDirect.com) for complete engineering drawings