

DINnectors® Accessories

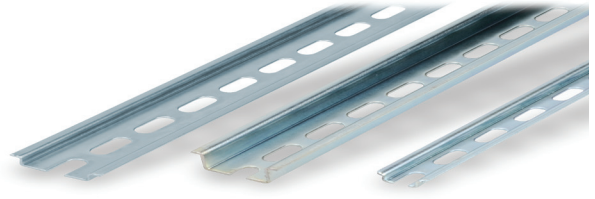
Steel DIN Rails Features

35mm wide

- Available in 1-meter lengths
- 7.5 mm-high rails primarily used to mount terminal blocks, relays, timers and small PLCs such as the BRX, CLICK, DirectLogic and Productivity series. 15mm-high rails for mounting larger and heavier components such as contactors and larger PLCs

15mm wide

- Available in 1-meter lengths
- DN-R15S1 exclusively for mounting mini terminal blocks such as the DN-M10-A



| Steel DIN Rails Specifications | | | | | | | | | |
|--------------------------------|--|-----|---------|---|-----|---------|---|-----|---------|
| | Part Number | Qty | Price | Part Number | Qty | Price | Part Number | Qty | Price |
| DIN Rail | <u>DN-R35S1</u> | 10 | \$39.00 | <u>DN-R35HS1</u> | 10 | \$68.00 | <u>DN-R15S1</u> | 10 | \$36.00 |
| | <u>DN-R35S1-2</u> | 2 | \$11.00 | <u>DN-R35HS1-2</u> | 2 | \$16.50 | <u>DN-R15S1-2</u> | 2 | \$10.00 |
| Description | DINnector DIN rail, slotted, 35mm width, 7.5mm height, 1m length, plated steel. Package of 10. | | | DINnector DIN rail, slotted, 35mm width, 15mm height, 1m length, plated steel. Package of 10. | | | DINnector DIN rail, slotted, 15mm width, 5.5mm height, 1m length, plated steel. Package of 2. | | |
| Plating | Zinc-plated and chromated | | | | | | | | |
| International Standards | EN 60715, RoHs | | | | | | | | |
| Suggested Mounting Screw Type | M6 | | | M6 | | | M4 | | |

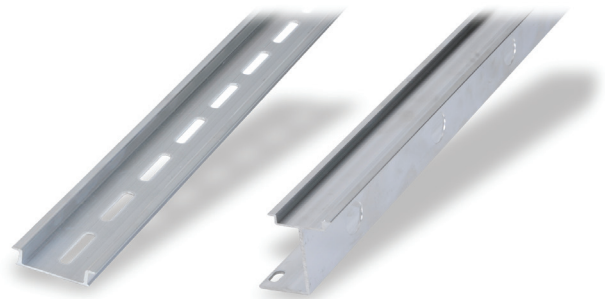
Aluminum DIN Rail Features

35mm wide

- Non-anodized finish
- Zinc plating and passivation (minimum thickness 6 microns)
- Lightweight, easy to cut and deburr
- Terminal blocks only
- Maximum mounting screw #10-32 or M5
- Available in 1-meter lengths

35mm wide raised

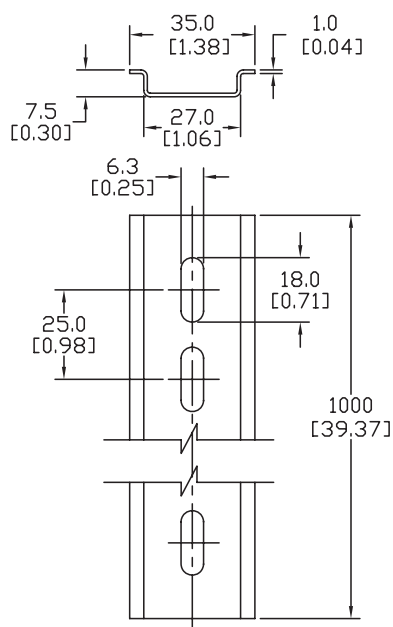
- Non-anodized finish
- Zinc plating and passivation (minimum thickness 6 microns)
- Enables users to raise terminal blocks 2¼" above the back panel
- Terminal blocks only
- Available in 1-meter lengths
- Bushing or grommet recommended for wire access hole (example Heyco UB-875 not sold by ADC)



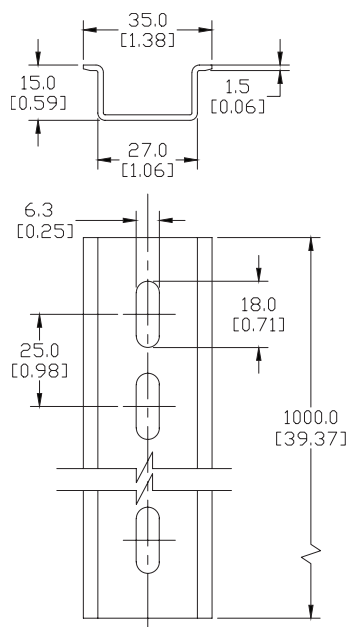
| Aluminum DIN Rails Specifications | | | | | | |
|-----------------------------------|---|-----|---------|--|-----|---------|
| | Part Number | Qty | Price | Part Number | Qty | Price |
| DIN Rail | <u>DN-R35SAL1</u> | 10 | \$60.00 | <u>DN-R35SAL2-2</u> | 2 | \$38.00 |
| | <u>DN-R35SAL1-2</u> | 2 | \$16.00 | | | |
| Description | DINnector DIN rail, slotted, 35mm width, 10mm height, 1m length, aluminum. Package of 10. | | | DINnector DIN rail, slotted, 2in raised 35mm width, 7.5mm height, 1m length, aluminum. Package of 2. | | |
| Plating | Galvanic zinc plating, non-anodized finish | | | | | |
| International Standards | DIN 50960, RoHs | | | | | |
| Suggested Mounting Screw Type | #10-32 or M5 | | | | | |



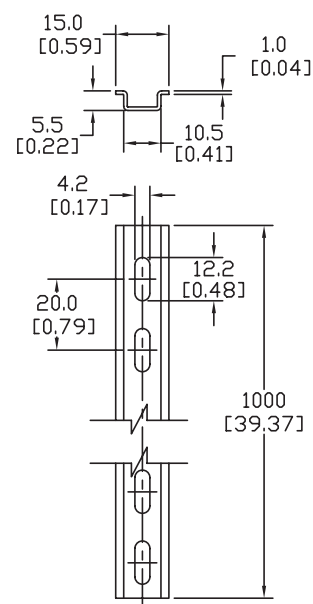
Dimensions

mm [inches]**DN-R35S1**

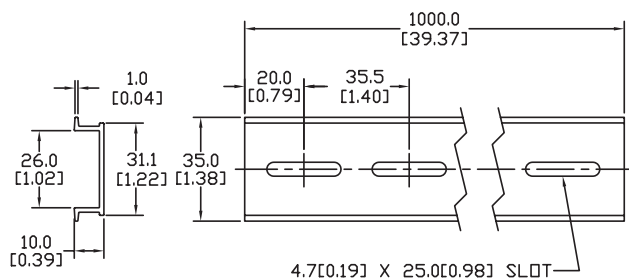
DN-R35HS1-2



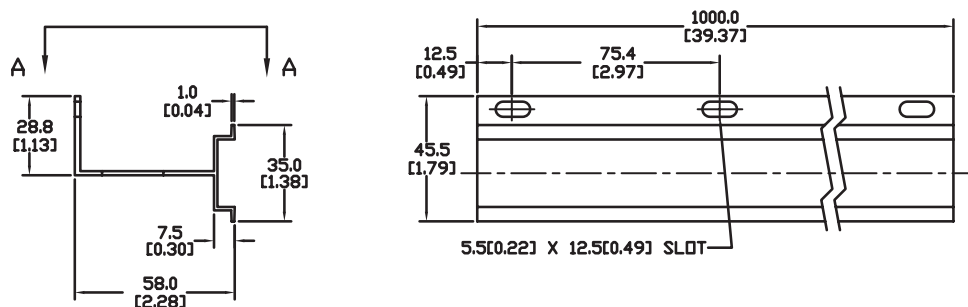
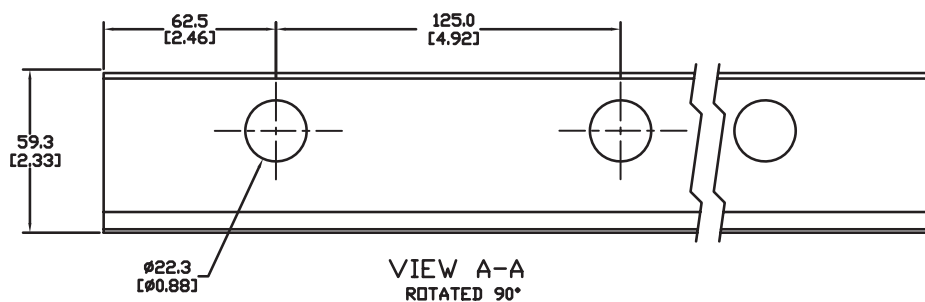
DN-R15S1



DN-R35SAL1
DN-R35SAL1-2



DN-R35SAL2-2



DINnectors Accessories

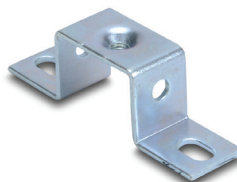
DIN rail support brackets

- Angled support brackets raise and tilt mounting rails 30 degrees from mounting surface for easier wiring
- [DN-ASB1](#) plated steel support bracket
- [DN-ASB2-10](#) cold-rolled steel treated with galvanic zinc plating and passivation

DIN rail mounting clips

- Snap small devices not made for mounting onto 35mm DIN rails
- Zinc plated steel

| DIN Rail Support Brackets and Mounting Clips | | | |
|--|---|-----|----------|
| Part Number | Description | Qty | Price |
| DN-ASB1 | 30° angled DIN rail support bracket (M6-1.0 screws not included) | 50 | \$107.00 |
| DN-ASB2-10 | 30° angled DIN rail support bracket (M6-1.0 screws included) | 10 | \$18.00 |
| DN-SSB25-10 | 1" (25mm) DIN rail support bracket (M6-1.0 screws included) | 10 | \$24.50 |
| DN-SSB50-10 | 2" (50mm) DIN rail support bracket (M6-1.0 screws included) | 10 | \$25.50 |
| DN-SSB70-10 | 2.75" (70mm) DIN rail support bracket (M6-1.0 screws included) | 10 | \$32.00 |
| DN-SSB90-10 | 3.5" (90mm) DIN rail support bracket (M6-1.0 screws included) | 10 | \$34.50 |
| DN-CLIP-FM4 | DIN rail mounting clip with M4 x 0.7 mm threaded hole (Screws not included) | 40 | \$66.00 |
| DN-CLIP-FM4-5 | | 5 | \$9.50 |
| DN-CLIP-FM5 | DIN rail mounting clip with M5 x 0.8 mm threaded hole (Screws not included) | 40 | \$66.00 |
| DN-CLIP-FM5-5 | | 5 | \$9.50 |

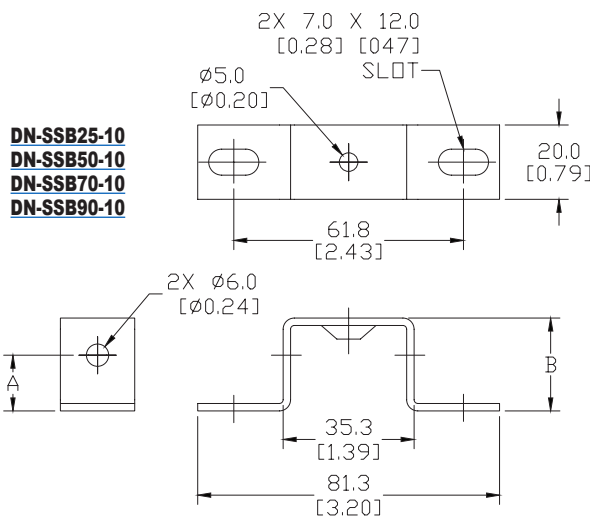
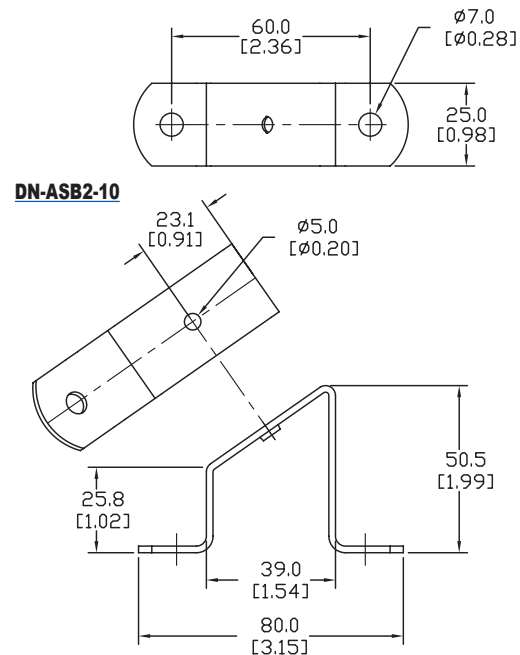
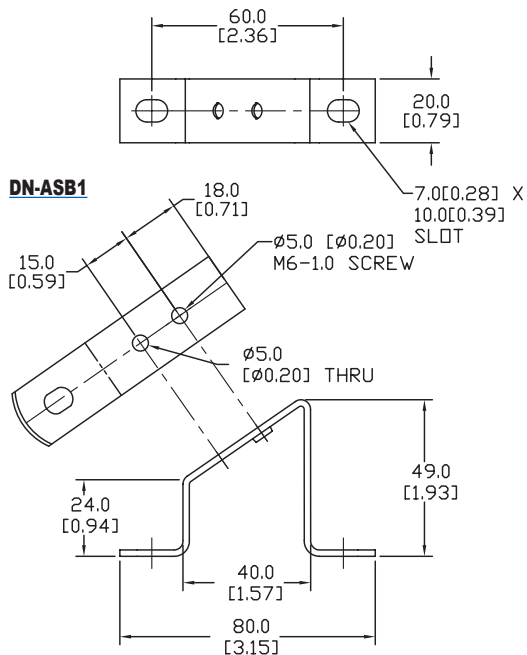
**[DN-ASB1](#)****[DN-ASB2-10](#)****[DN-SSB25-10](#)****[DN-SSB50-10](#)****[DN-SSB70-10](#)****[DN-SSB90-10](#)****[DN-CLIP-FM4](#)
[DN-CLIP-FM4-5](#)****[DN-CLIP-FM5](#)
[DN-CLIP-FM5-5](#)**

DINnectors® Accessories

DIN Rail Support Brackets and Mounting Clips

Dimensions

mm [inches]



| DIN Rail Support Brackets | | |
|---------------------------|----------------------|----------------------|
| Part Number | DIM A mm [inches] | DIM B mm [inches] |
| DN-SSB25-10 | 15.0 [0.59] | 25.0 [0.98] |
| DN-SSB50-10 | 40.0 [1.58] | 50.0 [1.97] |
| DN-SSB70-10 | 60.0 [2.36] | 70.0 [2.76] |
| DN-SSB90-10 | 80.0 [3.15] | 90.0 [3.54] |

See our website: www.AutomationDirect.com for complete engineering drawings

