



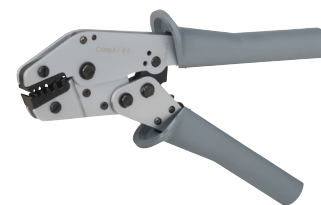
# Wiring Accessories

## Crimping Tools

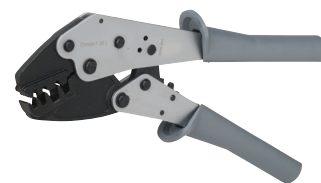
Crimping Tools			
Part Number	Description	Weight	Price
<a href="#">K70ZA000113</a>	Crimping tool for use with single ferrules AWG 20 - 10 [0.5 - 6 mm <sup>2</sup> ] and twin ferrules AWG 2 x 18 - 2 x 12 [2 x 0.75 - 2 x 4 mm <sup>2</sup> ]. 5 crimping positions. With and without insulating collar. Conforms to DIN 46228 part 1 and 2.	0.74 lb [335g]	\$115.00
<a href="#">K70ZA000117</a>	Crimping tool for use with single ferrules AWG 10 - 4 [6 - 25 mm <sup>2</sup> ] and twin ferrules AWG 2 x 12 - 2 x 8 [2 x 4 - 2 x 10 mm <sup>2</sup> ]. 4 crimping positions. Conforms to DIN 46228 part 1 and 4.	1.19 lb [540g]	\$124.00
<a href="#">K70ZA000130</a>	Crimping tool for PVC-insulated terminals AWG 20 - 10 [0.5 - 6 mm <sup>2</sup> ]. 3 crimping positions.	1.12 lb [510g]	\$115.00

Note: Z&F crimping tools recommended by the ferrule manufacturer before terminating in terminal blocks, wire connectors, or end-product terminals (such as starters, etc.).

[K70ZA000113](#)



[K70ZA000117](#)



[K70ZA000130](#)



Crimping Tools Cross Reference					
	Part Number		K70ZA000113	K70ZA000117	
	Standard	DIN			
Single Ferrules	<a href="#">V30AE000006</a>	<a href="#">V30AE000038</a>	X	—	
	<a href="#">V30AE000009</a>	<a href="#">V30AE000041</a>	X	—	
	<a href="#">V30AE000013</a>	<a href="#">V30AE000045</a>	X	—	
	<a href="#">V30AE000016</a>	<a href="#">V30AE000048</a>	X	—	
	<a href="#">V30AE000017</a>	<a href="#">V30AE000049</a>	X	—	
	<a href="#">V30AE000052</a>	<a href="#">V30AE000052</a>	X	—	
	<a href="#">V30AE000053</a>	<a href="#">V30AE000053</a>	X	—	
	<a href="#">V30AE000055</a>	<a href="#">V30AE000055</a>	X	—	
	<a href="#">V30AE000056</a>	<a href="#">V30AE000056</a>	X	—	
	<a href="#">V30AE000025</a>	<a href="#">V30AE000058</a>	X	X	
	<a href="#">V30AE000026</a>	<a href="#">V30AE000059</a>	X	X	
	<a href="#">V30AE000027</a>	<a href="#">V30AE000060</a>	—	X	
	<a href="#">V30AE000028</a>	<a href="#">V30AE000061</a>	—	X	
	<a href="#">V30AE000029</a>	<a href="#">V30AE000062</a>	—	X	
	<a href="#">V30AE000030</a>	<a href="#">V30AE000063</a>	—	X	
	<a href="#">V30AE000031</a>	<a href="#">V30AE000064</a>	—	X	
	<a href="#">V30AE000033</a>	<a href="#">V30AE000067</a>	—	—	
	<a href="#">V30AE000035</a>	<a href="#">V30AE000070</a>	—	—	
	Twin Ferrules	<a href="#">V30AE001134</a>	<a href="#">V30AE001145</a>	X	—
		<a href="#">V30AE000606</a>	<a href="#">V30AE000607</a>	X	—
<a href="#">V30AE000733</a>		<a href="#">V30AE000734</a>	X	—	
<a href="#">V30AE000608</a>		<a href="#">V30AE000609</a>	X	—	
<a href="#">V30AE000735</a>		<a href="#">V30AE000736</a>	X	—	
<a href="#">V30AE000623</a>		<a href="#">V30AE000625</a>	X	—	
<a href="#">V30AE000737</a>		<a href="#">V30AE000738</a>	X	—	
<a href="#">V30AE000611</a>		<a href="#">V30AE000611</a>	X	—	
<a href="#">V30AE000748</a>		<a href="#">V30AE000748</a>	X	—	
<a href="#">V30AE001148</a>		<a href="#">V30AE001148</a>	X	X	
<a href="#">V30AE001139</a>		<a href="#">V30AE001150</a>	—	X	
<a href="#">V30AE001141</a>		<a href="#">V30AE001152</a>	—	X	
<a href="#">V30AE001143</a>	<a href="#">V30AE001154</a>	—	X		

# Wiring Accessories – Crimping Tools

## Crimping Tools Overview

Our high-quality industrial crimping tools are designed to crimp a wide range of insulated and non-insulated crimping terminals, ferrules, and connectors. They feature ergonomic handles and controlled-cycle ratcheting mechanisms to guarantee a uniform crimp every time. Choose from fixed or interchangeable die tools or tool/die sets with multiple dies.

Interchangeable-Die Crimping Tools			
Part #	Description *	Qty	Price
<b><u>DN-CT-HDL</u></b>	Crimping tool handle for DN-CT-Dx dies (dies NOT included) Approximate dimensions: 9.75 x 2.52 x 0.95 in (234 x 64 x 24 mm); 16.2 oz (460g)	1	\$66.00
<b><u>DN-CT-D1</u></b>	Die set for <b><u>DN-CT-HDL</u></b> ; 26-22 & 12-10 AWG (0.1-0.4 & 4-6 mm <sup>2</sup> ) green & yellow insulated terminals	1	\$50.00
<b><u>DN-CT-D2</u></b>	Die set for <b><u>DN-CT-HDL</u></b> ; 22-14 AWG (0.5-2.5 mm <sup>2</sup> ) red & blue insulated terminals	1	\$50.00
<b><u>DN-CT-D3</u></b>	Die set for <b><u>DN-CT-HDL</u></b> ; 22-10 AWG (0.5-6 mm <sup>2</sup> ) non-insulated terminals	1	\$44.00
<b><u>DN-CT-D4</u></b>	Die set for <b><u>DN-CT-HDL</u></b> ; 24-8 AWG (0.25-10 mm <sup>2</sup> ) wire ferrules	1	\$44.00
<b><u>DN-CT-D5</u></b>	Die set for <b><u>DN-CT-HDL</u></b> ; 6-4 AWG (16-25 mm <sup>2</sup> ) wire ferrules	1	\$44.00
<b><u>DN-CT-D6</u></b>	Die set for <b><u>DN-CT-HDL</u></b> ; 2-1/0 AWG (35-50 mm <sup>2</sup> ) wire ferrules	1	\$44.00
<b><u>DN-CT-D7</u></b>	Die set for <b><u>DN-CT-HDL</u></b> ; 22-10 AWG (0.5-6 mm <sup>2</sup> ) open barrel non-insulated terminals	1	\$69.00
<b><u>DN-CT-D8</u></b>	Die set for <b><u>DN-CT-HDL</u></b> ; 8-pin (RJ45) modular plugs	1	\$44.00
<b><u>DN-CT-D9</u></b>	Die set for <b><u>DN-CT-HDL</u></b> ; 6-pin (RJ11/RJ12) modular plugs	1	\$44.00
<b><u>DN-CT-SET</u></b>	Crimping tool modular system; includes handle and three die sets ( <b><u>DN-CT-HDL</u></b> + <b><u>DN-CT-D2</u></b> + <b><u>DN-CT-D4</u></b> + <b><u>DN-CT-D5</u></b> ) The die pairs are held together for easy handling, and interchange without separate tools.	1	\$185.00



**DN-CT-HDL**  
Crimping Tool



**DN-CT-SET**  
Crimping Tool & Die Set

\* The DN-CT-xx series features a crimping tool with multiple interchangeable dies separately available. The die pairs are held together for easy handling, and can be interchanged without separate tools.

# Wiring Accessories – Crimping Tool

## DN-CT-Dx Interchangeable Crimping Dies (for DN-CT-xxx crimping tool only)

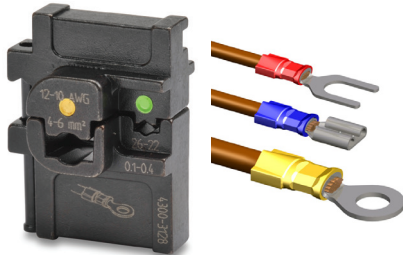
These dies are held together for easy handling, and can be interchanged without additional tools.

All DN-CT-Dx dies have been tested on leading brands of connectors to ensure quality connections.

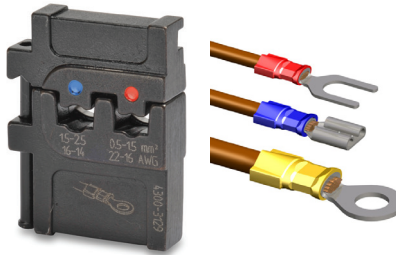
Dies come in modular holders that can be connected together when not in use.



DN-CT-Dx die & holder



**DN-CT-D1 (4300-3128)**  
Insulated Terminals & Connectors  
26–22 AWG & 12–10 AWG  
[Green & Yellow] (0.1–0.4 & 4–6 mm<sup>2</sup>)



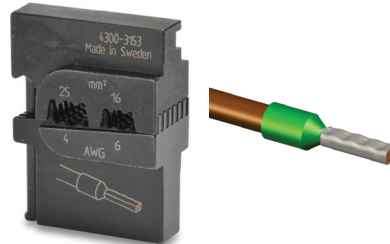
**DN-CT-D2 (4300-3129)**  
Insulated Terminals & Connectors  
22–14 AWG  
[Red & Blue] (0.5–2.5 mm<sup>2</sup>)



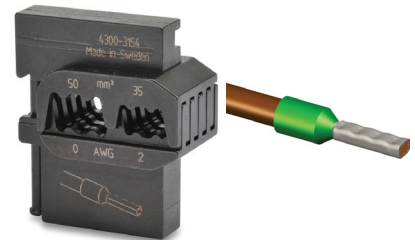
**DN-CT-D3 (4300-3142)**  
Non-Insulated Terminals & Connectors  
22–10 AWG (0.5–6 mm<sup>2</sup>)



**DN-CT-D4 (4300-3127)**  
Wire Ferrules  
24–8 AWG (0.25–10 mm<sup>2</sup>)



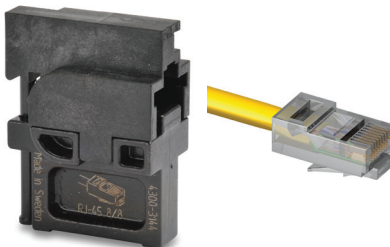
**DN-CT-D5 (4300-3153)**  
Wire Ferrules  
6–4 AWG (16–25 mm<sup>2</sup>)



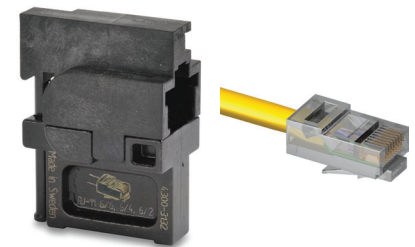
**DN-CT-D6 (4300-3154)**  
Wire Ferrules  
2–1/0 AWG (35–50 mm<sup>2</sup>)



**DN-CT-D7 (4300-3146)**  
Non-Insulated Open-Barrel Terminals  
22–10 AWG (0.5–6 mm<sup>2</sup>)



**DN-CT-D8 (4300-3144)**  
8-pin Modular Plugs  
RJ45



**DN-CT-D9 (4300-3132)**  
6-pin Modular Plugs  
RJ11/RJ12

