

# DC Input Modules

D4-64ND2 DC Input \$374.00	
Module Location	CPU base only*
Inputs per Module	64 (current sourcing)
Commons per Module	Eight (isolated)
Input Voltage Range	20-28VDC
Peak Voltage	30VDC
ON Voltage Level	>20.0V
OFF Voltage Level	<13.0V
Input Impedance	4.8 k $\Omega$
Input Current	5.0 mA @ 24VDC
Minimum ON Current	3.6 mA
Maximum OFF Current	2.6 mA
Base Power Required 5V	300mA max

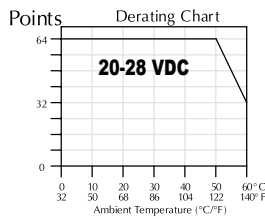
<b>External Power Required (optional)</b>	24VDC $\pm$ 10%, 320mA max
<b>OFF to ON Response</b>	2.5ms (typical)
<b>ON to OFF Response</b>	5ms (typical)
<b>Terminal Type (See ZIPLinks note below)</b>	Connectors sold separately.
<b>Status Indicators</b>	Logic side
<b>Weight</b>	7.8oz. (220g)

Since there are only 32 LED's on the module, you can only display the status for 32 points at one time. In the A - B position, the status of the first group of 32 input points (A0-A17, B0-B17) is displayed (connector 1). In the C - D position, the status of the second group of 32 input points (C0-C17, D0-D17) is displayed (connector 2).

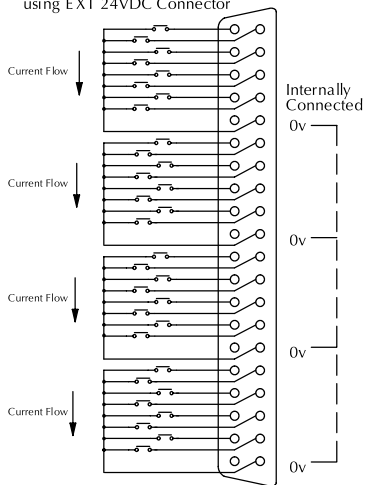
See Wiring Solutions for part numbers of ZIPLink cables and connection modules compatible with this I/O module.



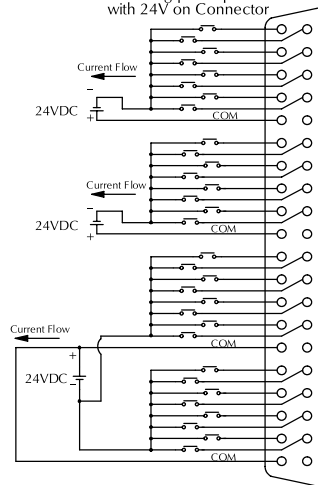
- \* 1. If you are using 64-pt. modules, you cannot install any speciality modules in slots 5, 6, or 7 of the local CPU base.
- 2. Modules are not allowed in expansion bases.



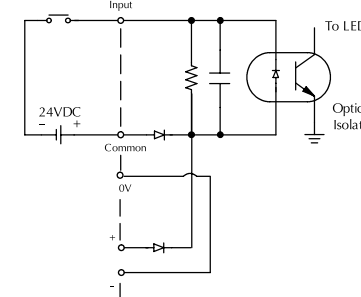
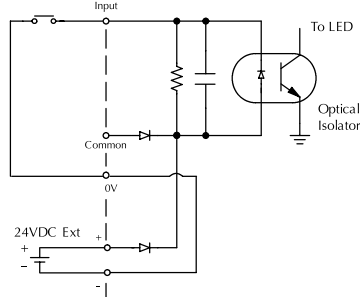
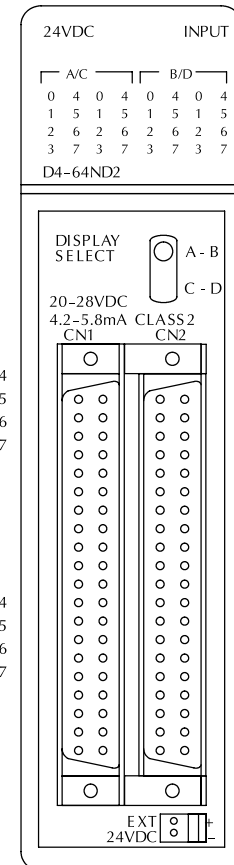
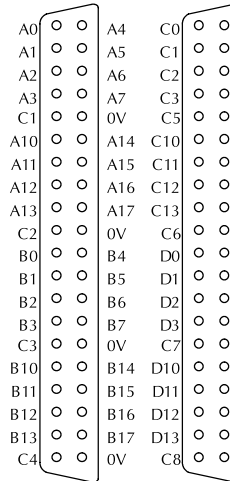
Wiring per 32pts. using EXT 24VDC Connector



Wiring per 32pts. with 24V on Connector



Connector Pins



# Check the Power Budget

## Verify your power budget requirements

Your I/O configuration choice can be affected by the power requirements of the I/O modules you choose. When determining the types and quantity of I/O modules you will be using, it is important to remember there is a limited amount of power available from the power supply.

The chart on the opposite page indicates the power supplied and used by each DL405 device. The adjacent chart shows an example of how to calculate the power used by your particular system. These two charts should make it easy for you to determine if the devices you have chosen fit within the power budget of your system configuration.

If the I/O you have chosen exceeds the maximum power available from the power supply, you can resolve the problem by shifting some of the modules to an expansion base or remote I/O base (if you are using remote I/O).

*Warning: It is extremely important to calculate the power budget correctly. If you exceed the power budget, the system may operate in an unpredictable manner which may result in a risk of personal injury or equipment damage.*

## Use ZIPLinks to reduce power requirements

If your application requires a lot of relay outputs, consider using the Ziplink AC or DC relay output modules. These modules can switch high current (10A) loads without putting a load on your base power budget. Refer to Wiring System for DL405 PLCs later in this section for more information.

This logo is placed next to I/O modules that are supported by the Ziplink connection systems.



See the I/O module specifications at the end of this section.

## Calculating your power usage

The following example shows how to calculate the power budget for the DL405 system. The example is constructed around a single 8-slot base using the devices shown. It is recommended you construct a similar table for each base in your system.

A				
	<b>Base Number</b> 0	<b>Device Type</b>	<b>5 VDC (mA)</b>	<b>External 24 VDC Power (mA)</b>
<b>B</b>	<b>CURRENT SUPPLIED</b>			
	<b>CPU/Expansion Unit /Remote Server</b>	D4-454 CPU	3700	400
<b>C</b>	<b>CURRENT REQUIRED</b>			
	<b>SLOT 0</b>	D4-16ND2	+150	+0
	<b>SLOT 1</b>	D4-16ND2	+150	+0
	<b>SLOT 2</b>	F4-04DA-2	+90	+90
	<b>SLOT 3</b>	D4-08NA	+100	+0
	<b>SLOT 4</b>	D4-08NA	+100	+0
	<b>SLOT 5</b>	D4-16TD2	+100	+0
	<b>SLOT 6</b>	D4-16TD2	+100	+0
	<b>SLOT 7</b>	D4-16TR	+1000	+0
<b>D</b>	<b>OTHER</b>			
	<b>BASE</b>	D4-08B-1	+80	+0
	<b>Handheld Programmer</b>	D4-HPP-1	+320	+0
<b>E</b>	<b>Maximum Current Required</b>		<b>2190</b>	<b>90</b>
<b>F</b>	<b>Remaining Current Available</b>		<b>3700-2190=1510</b>	<b>400-90=310</b>
	1. Using a chart similar to the one above, fill in column 2. 2. Using the tables on the opposite page, enter the current supplied and used by each device (columns 3 and 4). Pay special attention to the current supplied by the CPU, Expansion Unit, and Remote Server since they differ. Devices which fall into the "Other" category (Row D) are devices such as the Base and the Handheld programmer, which also have power requirements, but do not plug directly into the base. 3. Add the current used by the system devices (columns 3 and 4) starting with Slot 0 and put the total in the row labeled "maximum current required" (Row E). 4. Subtract the row labeled "Maximum current required" (Row E), from the row labeled "Current Supplied" (Row B). Place the difference in the row labeled "Remaining Current Available" (Row F). 5. If "Maximum Current Required" is greater than "Current Supplied" in either column 3 or 4, the power budget will be exceeded. It will be unsafe to use this configuration and you will need to restructure your I/O configuration. Note the auxiliary 24VDC power supply does not need to supply all the external power. If you need more than the 400mA supplied, you can add an external 24VDC power supply. This will help keep you within your power budget for external power.			

## DL405 CPU power supply specifications and power requirements

Specification	AC Powered Units	24 VDC Powered Units
<b>Part Numbers</b>	D4-454, D4-EX (expansion base unit), D4-RS (remote Server unit)	D4-454DC-1, D4-EXDC (expansion base unit)
<b>Voltage Withstand (dielectric)</b>	1 minute @ 1,500 VAC between primary, secondary, field ground, and run relay	
<b>Insulation Resistance</b>	> 10MΩ at 500VDC	
<b>Input Voltage Range</b>	85-132 VAC (110V range) 170-264 VAC (220V range)	20-28 VDC (24VDC) with less than 10% ripple
<b>Maximum Inrush Current</b>	20A	20A
<b>Maximum Power</b>	50VA	38W

# Power Requirements

Power Supplied					
CPUs/RemoteUnits/ Expansion Units	5 VDC Current Supplied in mA	24V Aux Power Supplied in mA	CPUs/Remote Units/ Expansion Units	5V Current Supplied in mA	24V Aux Power Supplied in mA
D4-454 CPU D4-454DC-1	3100 3100	400 NONE	D4-EX D4-EXDC D4-RS H4-EBC	4000 4000 3700 3470	400 NONE 400 400
Power Consumed					
Power-consuming Device	5V Current Consumed	External 24VDC Current Required	Power-consuming Device	5V Current Consumed	External 24VDC Current Required
<b>I/O Bases</b>			<b>Analog Modules (continued)</b>		
D4-04B-1	80	NONE	F4-16AD-1	75	100
D4-06B-1	80	NONE	F4-16AD-2	75	100
D4-08B-1	80	NONE	F4-08DA-1	70	75+20 per circuit
<b>DC Input Modules</b>			F4-08DA-2	90	90
D4-16ND2	150	NONE	F4-04DAS-1	60	60 per circuit
D4-16ND2F	150	NONE	F4-08DA-1	90	100+20 per circuit
D4-32ND3-1	150	NONE	F4-08DA-2	80	150
D4-64ND2	300 max.	NONE	F4-16DA-1	90	100+20 per circuit
<b>AC Input Modules</b>			F4-16DA-2	80	25 max.
D4-08NA	100	NONE	F4-08RTD	80	NONE
D4-16NA	150	NONE	F4-08THM-J(-n)	120	50
<b>AC/DC Input Modules</b>			F4-08THM	110	60
D4-16NE3	150	NONE	<b>Remote I/O</b>		
<b>DC Output Modules</b>			H4-ERM100	320(300)	NONE
D4-16TD1	200	125	H4-ERM-F	450	NONE
D4-16TD2	400	NONE	D4-RM	300	NONE
D4-32TD1	250	140	<b>Communications and Networking</b>		
D4-32TD2	350	120 (4A max including loads)	H4-ECOM100	300	NONE
D4-64TD1	800	NONE	D4-DCM	500	NONE
<b>AC Output Modules</b>			F4-MAS-MB	235	NONE
D4-08TA	250	NONE	<b>CoProcessors</b>		
D4-16TA	450	NONE	F4-CP128-1	305	NONE
<b>Relay Output Modules</b>			<b>Specialty Modules</b>		
D4-08TR	550	NONE	H4-CTRIO	400	NONE
F4-08TRS-1	575	NONE	D4-16SIM	150	NONE
F4-08TRS-2	575	NONE	F4-4LTC	280	75
D4-16TR	1000	NONE	<b>Programming</b>		
<b>Analog Modules</b>			D4-HPP-1 (Handheld Prog.)	320	NONE
F4-04AD	150	100	<b>Operator Interface</b>		
F4-04ADS	370	120	C-more Micro-Graphic	210	NONE
F4-08AD	75	90			



# Wiring Solutions

## Wiring Solutions using the ZIPLink Wiring System

**ZIPLink**s eliminate the normally tedious process of wiring between devices by utilizing prewired cables and DIN rail mount connector modules. It's as simple as plugging in a cable connector at either end or terminating wires at only one end. Prewired cables keep installation clean and efficient, using half the space at a fraction of the cost of standard terminal blocks. There are several wiring solutions available when using the **ZIPLink** System ranging from PLC I/O-to-**ZIPLink** Connector

Modules that are ready for field termination, options for connecting to third party devices, GS, DuraPulse and SureServo Drives, and specialty relay, transorb and communications modules. Pre-printed I/O-specific adhesive label strips for quick marking of **ZIPLink** modules are provided with **ZIPLink** cables. See the following solutions to help determine the best **ZIPLink** system for your application.

### **Solution 1: DirectLOGIC I/O Modules to ZIPLink Connector Modules**

When looking for quick and easy I/O-to-field termination, a **ZIPLink** connector module used in conjunction with a prewired **ZIPLink** cable, consisting of an I/O terminal block at one end and a multi-pin connector at the other end, is the best solution.

Using the PLC I/O Modules to **ZIPLink** Connector Modules selector tables located in this section,

1. Locate your I/O module/PLC.
2. Select a **ZIPLink** Module.
3. Select a corresponding **ZIPLink** Cable.



### **Solution 2: DirectLOGIC I/O Modules to 3rd Party Devices**

When wanting to connect I/O to another device within close proximity of the I/O modules, no extra terminal blocks are necessary when using the **ZIPLink** Pigtail Cables. **ZIPLink** Pigtail Cables are prewired to an I/O terminal block with color-coded pigtail with soldered-tip wires on the other end.

Using the I/O Modules to 3rd Party Devices selector tables located in this section,

1. Locate your PLC I/O module.
2. Select a **ZIPLink** Pigtail Cable that is compatible with your 3rd party device.



### **Solution 3: GS Series and DuraPulse Drives Communication Cables**

Need to communicate via Modbus RTU to a drive or a network of drives?

**ZIPLink** cables are available in a wide range of configurations for connecting to PLCs and SureServo, SureStep, Stellar Soft Starter and AC drives. Add a **ZIPLink** communications module to quickly and easily set up a multi-device network.

Using the Drives Communication selector tables located in this section,

1. Locate your Drive and type of communications.
2. Select a **ZIPLink** cable and other associated hardware.





# Wiring Solutions

## **Solution 4: Serial Communications Cables**

**ZIPLink** offers communications cables for use with DirectLOGIC, CLICK, and Productivity3000 CPUs, that can also be used with other communications devices. Connections include a 6-pin RJ12 or 9-pin, 15-pin and 25-pin D-sub connectors which can be used in conjunction with the RJ12 or D-Sub Feedthrough modules.

Using the Serial Communications Cables selector table located in this section,

1. Locate your connector type
2. Select a cable.



## **Solution 5: Specialty ZIPLink Modules**

For additional application solutions, **ZIPLink** modules are available in a variety of configurations including stand-alone relays, 24VDC and 120VAC transorb modules, D-sub, RJ12 and RJ45 feedthrough modules, communication port adapter and distribution modules, and SureServo 50-pin I/O interface connection.

Using the **ZIPLink** Specialty Modules selector table located in this section,

1. Locate the type of application.
2. Select a **ZIPLink** module.



## **Solution 6: ZIPLink Connector Modules to 3rd Party Devices**

If you need a way to connect your device to terminal blocks without all that wiring time, then our pigtail cables with color-coded soldered-tip wires are a good solution. Used in conjunction with any compatible **ZIPLink** Connector Modules, a pigtail cable keeps wiring clean and easy and reduces troubleshooting time.

Using the Universal Connector Modules and Pigtail Cables table located in this section,

1. Select module type.
2. Select the number of pins.
3. Select cable.







# PLC I/O Modules to ZIPLink Connector Modules - DL405

DL405 PLC Input Module ZIPLink Selector				
PLC	ZIPLink			
Input Module	# of Terms	Component	Module Part No.	Cable Part No.
<a href="#">D4-16ND2</a>	20	See Note 3		
<a href="#">D4-16ND2F</a>				
<a href="#">D4-32ND3-1<sup>2</sup></a>	40	Feedthrough	<a href="#">ZL-RTB40 (-1)</a>	straight conn: <a href="#">ZL-D24-CBL40</a>
		Sensor	<a href="#">ZL-LTB32-24-1</a>	<a href="#">ZL-D24-CBL40-1</a>
		Feedthrough	<a href="#">ZL-RTB40 (-1)</a>	<a href="#">ZL-D24-CBL40-2</a>
<a href="#">D4-64ND2<sup>1,2</sup></a>		Sensor	<a href="#">ZL-LTB32-24-1</a>	45 deg conn: <a href="#">ZL-D24-CBL40-X</a> <a href="#">ZL-D24-CBL40-1X</a> <a href="#">ZL-D24-CBL40-2X</a>
<a href="#">D4-08NA</a>	11	See Note 3		
<a href="#">D4-16NA</a>	20			
<a href="#">D4-16NE3</a>				

DL405 PLC Output Module ZIPLink Selector				
PLC	ZIPLink			
Output Module	# of Terms	Component	Module Part No.	Cable Part No.
<a href="#">D4-16TD1</a>	20	See Note 3		
<a href="#">D4-16TD2</a>				
<a href="#">D4-32TD1<sup>2</sup></a>	40	Feedthrough	Feedthrough <a href="#">ZL-RTB40 (-1)</a> Fused <a href="#">ZL-RFU40<sup>4</sup></a>	straight conn: <a href="#">ZL-D24-CBL40</a>
		Fuse		<a href="#">ZL-D24-CBL40-1</a>
<a href="#">D4-32TD2<sup>2</sup></a>		Feedthrough		<a href="#">ZL-D24-CBL40-2</a>
		Fuse		
<a href="#">D4-64TD1<sup>1,2</sup></a>		Feedthrough		45 deg conn: <a href="#">ZL-D24-CBL40-X</a> <a href="#">ZL-D24-CBL40-1X</a> <a href="#">ZL-D24-CBL40-2X</a>
		Fuse		
<a href="#">D4-08TA</a>	11	See Note 3		
<a href="#">D4-16TA</a>	20			
<a href="#">D4-08TR</a>	11			
<a href="#">F4-08TRS-1</a>	20			
<a href="#">F4-08TRS-2</a>				
<a href="#">D4-16TR</a>				

DL405 PLC Analog Module ZIPLink Selector				
PLC	ZIPLink			
Analog Module	# of Terms	Component	Module	Cable
<a href="#">F4-04AD</a>	20	See Note 3		
<a href="#">F4-04ADS</a>				
<a href="#">F4-08AD</a>				
<a href="#">F4-16AD-1</a>				
<a href="#">F4-16AD-2</a>				
<a href="#">F4-04DA-1</a>				
<a href="#">F4-04DA-2</a>				
<a href="#">F4-08DA-1</a>				
<a href="#">F4-16DA-1</a>				
<a href="#">F4-08DA-2</a>				
<a href="#">F4-16DA-2</a>				
<a href="#">F4-04DAS-1</a>				
<a href="#">F4-08THM</a>				
<a href="#">F4-08THM-n</a>	Matched Only			
<a href="#">F4-08RTD</a>				

**Tables Footnotes:**

- The [D4-64ND2](#) and [D4-64TD1](#) modules have two 32-point connectors and require two ZIPLink cables and two ZIPLink connector modules.
- To make a custom cable for the 32 or 64-point modules, use: Ribbon-style Connector [ZL-D24-CON-R](#), Solder-style 180° connector [ZL-D24-CON](#) or Solder-style 45° connector [ZL-D24-CON-X](#)
- These modules are not supported by the ZIPLink wiring system.
- Note: Fuses (5 x 20 mm) are not included. See Edison Electronic Fuse section for (5 x 20 mm) fuse. S500 and GMA electronic circuit protection for fast-acting maximum protection. S506 and GMC electronic circuit protection for time-delay performance. Ideal for inductive circuits. To ensure proper operation, do not exceed the voltage and current rating of ZIPLink module. [ZL-RFU20](#) = 2A per circuit; [ZL-RFU40](#) = 400 mA per circuit.



**Note:** ZIPLink Connector Module specifications follow the Compatibility Matrix tables in the ZIPLink section.