

Contrinex Safety Columns

Contrinex Safety Columns Selection Chart			
Part Number	Price	Description	Use With
Mirror Columns			
<u>YXC-1280-M11</u>	\$767.00	Contrinex mirror column, 1281mm [50.43 in] housing, 1082mm [42.60 in] mirror(s). For use with safety light curtains. Mounting hardware included.	YBB-xxxx-0150-xxxx to YBB-xxxx-0900-xxxx YCA-xxxx-3400-xxxx
<u>YXC-1715-M11</u>	\$905.00	Contrinex mirror column, 1716mm [67.56 in] housing, 1532mm [60.31 in] mirror(s). For use with safety light curtains. Mounting hardware included.	YBB-xxxx-0150-xxxx to YBB-xxxx-1400-xxxx YCA-xxxx-3400-xxxx to YCA-xxxx-4400-xxxx
<u>YXC-2015-M11</u>	\$1,047.00	Contrinex mirror column, 2016mm [79.37 in] housing, 1682mm [66.22 in] mirror(s). For use with safety light curtains. Mounting hardware included.	YBB-xxxx-0150-xxxx to YBB-xxxx-1600-xxxx YCA-xxxx-3400-xxxx to YCA-xxxx-4400-xxxx
<u>YXC-2215-M11</u>	\$1,192.00	Contrinex mirror column, 2216mm [87.24 in] housing, 1832mm [72.13 in] mirror(s). For use with safety light curtains. Mounting hardware included.	YBB-xxxx-0150-xxxx to YBB-xxxx-1700-xxxx YCA-xxxx-3400-xxxx to YCA-xxxx-4400-xxxx
<u>YXC-1185-M23</u>	\$468.00	Contrinex mirror column, 1185mm [46.65 in] housing, (3) 90mm [3.54 in] mirror(s). For use with safety light curtains. Mounting hardware included.	YCA-xxxx-3400-xxxx
<u>YXC-1285-M24</u>	\$558.00	Contrinex mirror column, 1285mm [50.59 in] housing, (4) 90mm [3.54 in] mirror(s). For use with safety light curtains. Mounting hardware included.	YCA-xxxx-4300-xxxx
Protective Columns			
<u>YXC-0985-F00</u>	\$434.00	Contrinex protective column, 965mm [37.99 in] housing. For use with safety light curtains. Mounting hardware included.	YBB-xxxx-0150-xxxx to YBB-xxxx-0800-xxxx
<u>YXC-1285-F00</u>	\$478.00	Contrinex protective column, 1265mm [49.80 in] housing. For use with safety light curtains. Mounting hardware included.	YBB-xxxx-0150-xxxx to YBB-xxxx-1000-xxxx YCA-xxxx-3400-xxxx
<u>YXC-1740-F00</u>	\$518.00	Contrinex protective column, 1720mm [67.72 in] housing. For use with safety light curtains. Mounting hardware included.	YBB-xxxx-0150-xxxx to YBB-xxxx-1400-xxxx YCA-xxxx-3400-xxxx to YCA-xxxx-4400-xxxx
<u>YXC-2040-F00</u>	\$539.00	Contrinex protective column, 2020mm [79.53 in] housing. For use with safety light curtains. Mounting hardware included.	YBB-xxxx-0150-xxxx to YBB-xxxx-1700-xxxx YCA-xxxx-3400-xxxx to YCA-xxxx-4400-xxxx
Other			
<u>YXL-0001-000</u>	\$294.00	Laser alignment tool for safety light curtains, class 2 laser, range up to 50m [164.04 ft], useable and clippable to YBB and YCA light curtains models, 2 AA batteries included.	YBB Series YCA Series
<u>YXW-0001-000</u>	\$8.25	Safety light curtain mounting brackets for top and bottom mounting. Plastic. 2/pk.	
<u>YXW-0003-000</u>	\$8.25	Safety light curtain sliding T-nuts for side mounting. Metal. 2/pk. Ideal torque from M5x0.8 thread is 6 N•m (4.42 lb•ft, 53.1 lb•in).	

**YXC-1280-M11****YXC-1185-M23**

Light Curtain Mirror Columns

- Multi-sided safeguarding of danger zones
- Robust protective profile
- 10% reduction of operating distance for mirror

**YXC-1285-F00**

Light Curtain Protective Columns

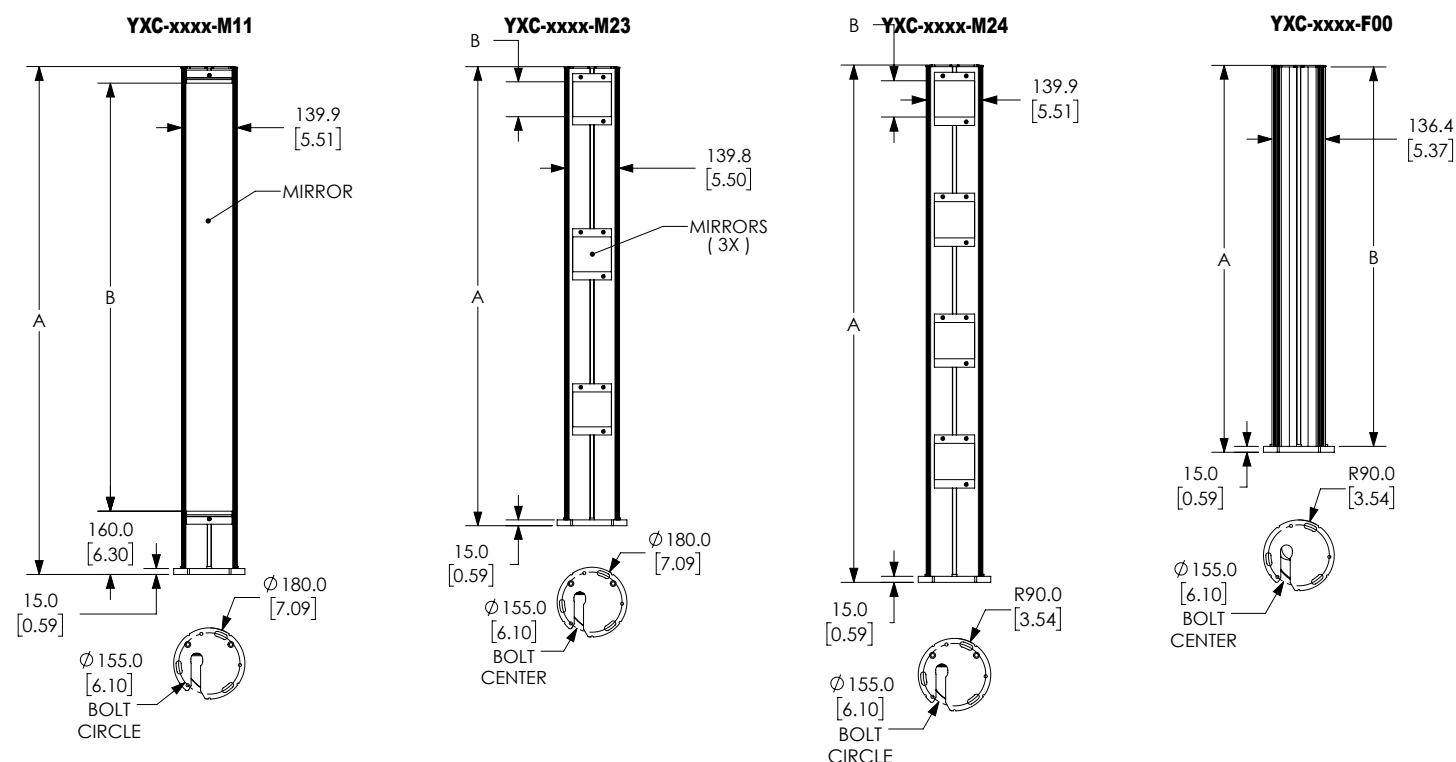
- Automatically bounces back after physical shock or vibration.
- Robust baseplate allows radial and vertical alignment.
- Solid aluminum profile

**YXW-0001-000****YXW-0003-000****YXL-0001-000**

Contrinex Safety Columns

Dimensions

mm [in]



Safety Light Curtains Mirror Columns Dimensions

Part Number	Total Height A mm [in]	Mirror Height B mm [in]	Height to Lowest Beam mm [in]	Beam Gap mm [in]
YXC-1280-M11	1281 [50.43]	1082 [42.60]	—	—
YXC-1715-M11	1716 [67.56]	1532 [60.31]	—	—
YXC-2015-M11	2016 [79.37]	1682 [66.22]	—	—
YXC-2215-M11	2216 [87.24]	1832 [72.13]	—	—
YXC-1185-M23	1185 [46.65]	90 [3.54]	300 [11.81]	400 [15.75]
YXC-1285-M24	1285 [50.59]	90 [3.54]	300 [11.81]	300 [11.81]

Safety Light Curtains Protective Columns Dimensions

Part Number	Total Height A mm [in]	Housing Height B mm [in]
YXC-0985-F00	985 [38.78]	965 [37.99]
YXC-1285-F00	1285 [50.59]	1265 [49.80]
YXC-1740-F00	1740 [68.50]	1720 [67.72]
YXC-2040-F00	2040 [80.31]	2020 [79.53]

Note: Full and open top caps are provided to accommodate taller units.

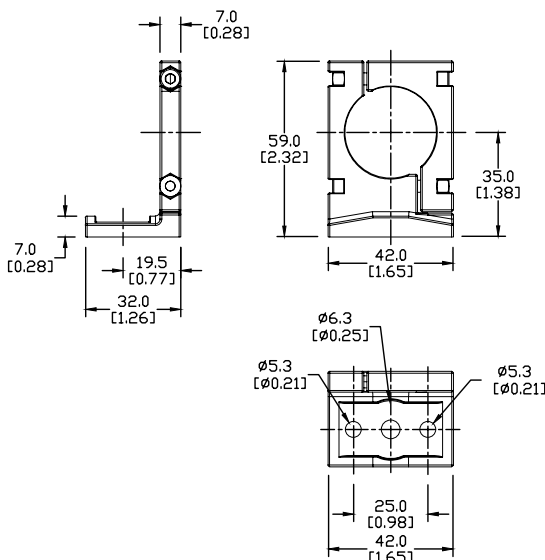
See our website www.AutomationDirect.com for complete engineering drawings.

Contrinex Safety Light Curtains Accessories

Mounting bracket



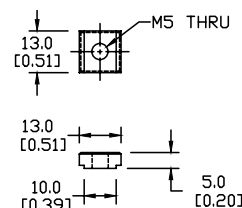
YXW-0001-000



T-Nuts for side mounting



YXW-0003-000



Laser Alignment Tool

- Clips on YBB and YCA Curtains/Barriers
- High quality lens for narrow output beam
- Up to 50m [164ft] range
- <1mW output power
- Standard AA batteries included

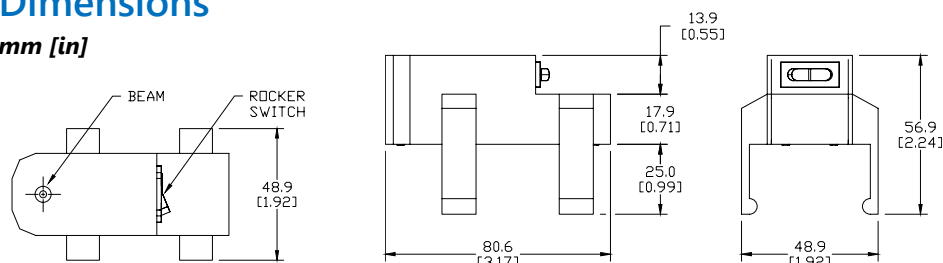


YXL-0001-000

Laser Alignment Tool YXL-0001-000 Specifications	
Supply Voltage Range	2.5 – 3.3 VDC
Laser Module Optical Output Power	<1mW (Class 2)
Range	50m (164ft)
Ambient Temperature Range	0-40°C (32-104°F)
Storage Temperature Range	0-60°C (32-140°F)
Wavelength	655nm ± 1%
Laser Beam Spot Size at 10m	< 10mm
Divergence Angle	1.1 mrad
Housing Material	PA with 30% fiberglass
Mounting	Clippable onto YBB / YCA devices
Weight	95g (0.21 lb)

Dimensions

mm [in]



See our website www.AutomationDirect.com for complete engineering drawings.

Warning: Safety products sold by AutomationDirect are Safety components only.

The purchaser/installer is solely responsible for the application of these components and ensuring all necessary steps have been taken to assure each application and use meets all performance and applicable safety requirements and/or local, national and/or international safety codes as required by the application. AutomationDirect cannot certify that our products used solely or in conjunction with other AutomationDirect or other vendors' products will assure safety for any application.

Any person using or applying any products sold by AutomationDirect is responsible for learning the safety requirements for their individual application and applying them, and therefore assumes all risks, and accepts full and complete responsibility for the selection and suitability of the product for their respective application. AutomationDirect does not provide design or consulting services, and cannot advise whether any specific application or use of our products would ensure compliance with the safety requirements for any application.

