



M18 Metal Photoelectric Sensors



LTR-M18MA-PMS-603

M18 (18mm) metal – DC

- Diffuse, diffuse with adjustable background suppression, retroreflective, through-beam styles
- M12 quick-disconnect models; purchase cable separately
- Complete overload protection
- IP67 rated
- 2-year warranty
- IO-Link V 1.0 on PNP models



M18 Metal Photoelectric Sensors									
Part Number	Price	Sensing Range	Switching Frequency	Light Type	Logic	Output Function	Connection Type	Wiring	Drawing Link
Diffuse Reflective									
LTR-M18MA-PMS-603	\$40.50	3-1200mm [0.11-47.24 in]	1.5 kHz	Visible red	PNP	Complementary Light-on / Dark-on	4-pin M12 quick-disconnect	2	PDF
LTR-M18MA-PMS-101	\$40.50	3-1200mm [0.11-47.24 in]	1.5 kHz	Visible red	NPN	Complementary Light-on / Dark-on	4-pin M12 quick-disconnect	1	PDF
*Retroreflective sensor									
LRR-M18MA-NMS-603	\$41.50	0.02-7m [0.06-22.96 ft]	1.5 kHz	Visible red	PNP	Complementary Light-on / Dark-on	4-pin M12 quick-disconnect	2	PDF
LRR-M18MA-NMS-101	\$41.50	0.02-7m [0.06-22.96 ft]	1.5 kHz	Visible red	NPN	Complementary Light-on / Dark-on	4-pin M12 quick-disconnect	1	PDF
*Purchase reflector separately									
Background Suppression									
LHR-M18MA-PMS-603	\$51.50	10-250mm [0.39-9.84 in]	700 Hz	Visible red	PNP	Complementary Light-on / Dark-on	4-pin M12 quick-disconnect	2	PDF
LHR-M18MA-TMS-603	\$51.50	10-250mm [0.39-9.84 in]	700 Hz	Visible red	PNP	Complementary Light-on / Dark-on	4-pin M12 quick-disconnect	2	PDF
LHR-M18MA-PMS-101	\$51.50	10-250mm [0.39-9.84 in]	700 Hz	Visible red	NPN	Complementary Light-on / Dark-on	4-pin M12 quick-disconnect	1	PDF
LHR-M18MA-TMS-101	\$51.50	10-250mm [0.39-9.84 in]	700 Hz	Visible red	NPN	Complementary Light-on / Dark-on	4-pin M12 quick-disconnect	1	PDF
Through-beam emitters									
LLR-M18MA-NMS-400	\$27.50	0-30m [0-98.43 ft]	1 kHz	Visible red	N/A	N/A	4-pin M12 quick-disconnect	3	PDF
Through-beam receivers									
LLR-M18MA-NMS-603	\$38.00	0-30m [0-98.43 ft]	1 kHz	N/A	PNP	Complementary Light-on / Dark-on	4-pin M12 quick-disconnect	2	PDF
LLR-M18MA-NMS-101	\$38.00	0-30m [0-98.43 ft]	1 kHz	N/A	NPN	Complementary Light-on / Dark-on	4-pin M12 quick-disconnect	1	PDF

Warning: These products are not safety sensors and are not suitable for use in personal safety applications.

Wiring Diagrams

Diagram 1
4-Wire NPN Output

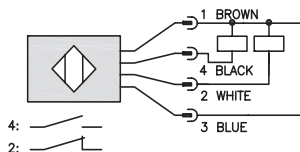


Diagram 2
4-Wire PNP Output

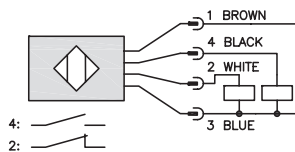
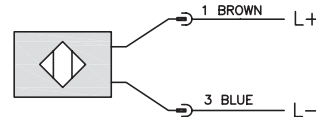
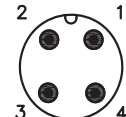


Diagram 3
Emitter



M12 connector





M18 Metal Photoelectric Sensors Specifications



M18 Metal Photoelectric Sensors Specifications				
Sensor type	Diffuse reflective (LTR)	Retroreflective (LRR)	Diffuse reflective with adjustable background suppression (LHR)	Through-Beam (LLR)
Sensing Distance ¹ (Except LRR)	3 - 1200 mm [0.11 - 47.24 in]	20 - 7,000 mm [0.78 - 275.59 in]	10 - 250 mm [0.39 - 9.84 in]	0 - 30,000 mm [0 - 1181.10 in]
Operating Range ¹ (Except LRR)	5 - 1,000 mm [0.19 - 39.37 in]	30 - 5,500 mm [1.18 - 216.53 in]	15 - 210 mm [0.59 - 8.26 in]	0 - 25,000 mm [0 - 984.25 in]
Light Spot Diameter (Distance)	Ø 11 mm [500mm]/ Ø 21 mm [1m]	Ø 21 mm [1m]/ Ø 110 mm [6m]	Ø 6 mm [100mm]/ Ø 10 mm [250mm]	Ø 35mm [500mm]/ Ø 250mm [6m] 1000mm [25m]
Emission	LED, red 630nm	LED, red 630nm	Pinpoint LED, red 640nm	LED, red 630nm
Sensitivity	30 - 1,200 mm, 3/4-turn pot.	2,500 - 7,000 mm, IO-Link	30 - 250 mm, PM models 3/4-turn pot TM models pushbutton teach	7,000 - 30,000 mm via IO-Link Only
Output Types	NPN or PNP			
Operating Voltage	10-30 VDC			
No Load Supply Current	≤ 15mA	≤ 15mA	≤ 30mA	≤ 7mA (emitter)/ ≤ 13mA (receiver)
Operating (Load) Current	≤ 200mA			
Response Time ²	≤ 300ms (normal)/ ≤ 1ms/≤ 100 µs	≤ 340ms (normal)/ ≤ 1ms/≤ 115 µs	≤ 700ms (normal)/ ≤ 1.1 ms/≤ 500 µs	≤ 500ms (normal)/ ≤ 1ms/≤ 250 µs
Switching Frequency ²	≤ 1.5 kHz (normal)/ ≤ 500Hz/≤ 5 kHz	≤ 1.5 kHz (normal)/ ≤ 500Hz/≤ 4.5 kHz	≤ 700Hz (normal)/ ≤ 450Hz/≤ 1 kHz	≤ 1kHz (normal)/ ≤ 500Hz/≤ 2 kHz
Ripple	≤ 10%Vpp			
Voltage Reversal Protection	Yes			
Short-circuit Protection	Yes			
Operating Temperature	-25 to +65°C [-13 to +149°F]			
Protection Degree	IP67			
LED Indicators - Switching Status	Green LED: excess gain; Yellow LED: sensing state			
Housing Material	Stainless Steel			
Lens Material	PMMA - Poly (methyl methacrylate)			
Shock/Vibration	IEC 60947-5-2			
Tightening Torque	20 N•m max			
Weight	14g [0.49 oz]			
IO-Link	IO-Link version 1.0, PNP units only			
Connectors	4-pin M12 quick-disconnect			
Agency Approvals	cULus, CE			

¹ Object with 90% reflectance (standard white paper)

² By default, "Normal" mode. "Fine" and "Fast" modes selectable via IO-Link.

To obtain the most current agency approval information, see the Agency Approval Checklist section on the specific part number's web page.

Accessories for 18mm Sensors

Axial Mounting Bracket

Axial mounting bracket available in zinc plated steel or 316L stainless steel. Has two mounting holes (use 4mm screws) and allows for rotation of an optical axis for right-beam-angle-adaptor sensors. Hexagonal nuts not included. For use with 18mm sensors.

Accessories for 18mm Sensors			
Part Number	Price	Description	Weight lb [g]
<u>ST18A</u>	\$2.00	Micro Detectors mounting bracket, axial, zinc plated steel. For use with 18mm sensors.	0.06 [27.2]
<u>ST18A7W</u>	\$7.25	Micro Detectors mounting bracket, axial, 316L stainless steel. For use with 18mm sensors.	0.06 [27.2]



ST18A

Dimensions

mm [inches]



Right-angle Mounting Bracket

Right-angle mounting bracket for use with 18mm sensors. Has two mounting holes (use 4mm screws) and allows the rotation of an optical axis for axial sensors. Hexagonal nuts not included.

Accessories for 18mm Sensors			
Part Number	Price	Description	Weight lb [g]
<u>ST18C</u>	\$2.00	Micro Detectors mounting bracket, right-angle, zinc plated steel. For use with 18mm sensors.	0.06 [27.2]
<u>ST18C7W</u>	\$7.25	Micro Detectors mounting bracket, right-angle, 316L stainless steel. For use with 18mm sensors.	0.06 [27.2]



ST18C

Dimensions

mm [inches]



Accessories for 18mm Sensors

Right-angle Mounting Brackets

Mounting bracket, right-angle, fixed insertion stop adjustment, plastic. For use with 18mm sensors. Available with or without fixed insertion stop.

Accessories for 18mm Sensors				
Part Number	Price	Description	Drawing Link	Weight lb [g]
OPT2104	\$10.50	Wenglor mounting bracket, right-angle, fixed insertion stop adjustment, plastic. For use with 18mm sensors.	PDF	0.06 [27.2]
OPT2105	\$10.50	Wenglor mounting bracket, right-angle, plastic. For use with 18mm sensors.	PDF	0.06 [27.2]



[OPT2104](#), [OPT2105](#)

Right-angle Swivel Mounting Systems

Mounting bracket, right-angle swivel, 360 degree vertical and horizontal adjustment, 12mm rod mount. For use with 18mm sensors. Available in all 304 stainless steel or with an aluminum head and a stainless steel mounting plate.

Accessories for 18mm Sensors						
Part Number	Price	Description	Mounting Head	Mounting Plate	Drawing Link	Weight lb [g]
OPT2116	\$11.50	Wenglor mounting bracket, right-angle swivel, 360 degree vertical and horizontal adjustment, aluminum, 12mm rod mount. For use with 18mm sensors.	Aluminum	304 Stainless steel	PDF	0.15 [68.0]
OPT2117	\$21.00	Wenglor mounting bracket, right-angle swivel, 360 degree vertical and horizontal adjustment, 304 stainless steel, 12mm rod mount. For use with 18mm sensors.	304 Stainless steel	304 Stainless steel	PDF	0.28 [127.0]



[OPT2116](#), [OPT2117](#)

Note: 304 Stainless steel mounting rods sold separately: [OPT2109](#) (200mm [7.87 in] length), [OPT2110](#) (300mm [11.81 in] length), and [OPT2111](#) (500mm [19.69 in] length).

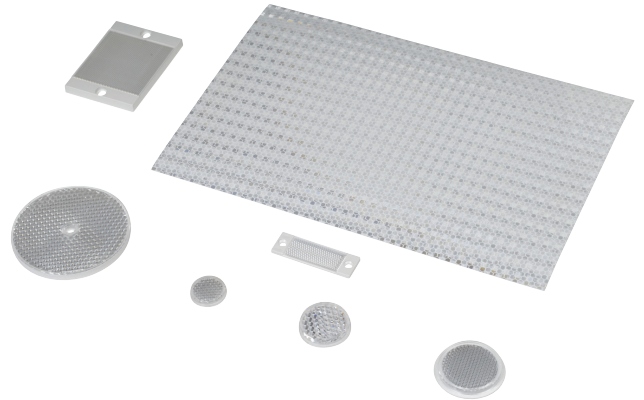
Reflectors

RL Series Reflectors for Polarized Reflective Photoelectric Sensors (All Models)

- Suitable for use with polarized light photoelectric sensors
- Shapes and sizes for most applications
- Miniature types for close mounting in multiple sensor installations
- Single hole, dual hole and self-adhesive mounting types available
- Single and 10-packs available

Installation Notes

- Keep the reflector surface clean to ensure peak detection performance. This is especially true when the maximum sensing range is being used. Clean using a damp cloth.
- When selecting a reflector, it is important to consider the ambient conditions it will be exposed to. Dusty or high humidity conditions may reduce the sensing range as much as 90%.
- Reflectors should be positioned at a 90° angle to the optical axis with a tolerance of $\pm 15^\circ$.



Reflector Specifications							
Part number	Price	Drawing Link	Quantity	Dimensions mm [in]	Degree of Protection	Mounting	Materials
RL102	\$38.00	PDF	10	25	IEC IP67	Customer-supplied adhesive or other mounting method required	Reflective face: PMMA Polymethylmethacrylate (acrylic) Base material: ABS (Acrylonitrile-butadiene-styren)
RL102-1	\$4.25		1	[0.98]			
RL103	\$42.50	PDF	10	34.5			
RL103-1	\$4.75		1	[1.36]			
RL104	\$42.50	PDF	10	46			
RL104-1	\$4.75		1	[1.81]			
RL105G	\$38.00	PDF	10	95 x 38		Two 4.3 mm holes	
RL105G-1	\$4.25		1	[3.74 x 1.50]			
RL106G	\$42.50	PDF	10	182 x 42		Two 6mm holes	
RL106G-1	\$4.75		1	[7.17 x 1.65]			
RL110	\$19.00	PDF	10	84		One 5mm hole	
RL110-1	\$2.00		1	[3.31]			
RL116	\$19.00	PDF	10	41 x 60		Two 3mm holes	
RL116-1	\$2.00		1	[3.54 x 2.36]			
RL100DA4	\$38.50	NA	1	200 x 300		Self-adhesive	Paper (Acrylic tape with micro prism)
RL100DC4	\$12.00	NA	1	50 x 300			
RL100DQ1	\$8.75	NA	1	100 x 100			
RL111G	\$60.00	PDF	10	22.5 x 47		Two 3mm slots	Reflective face: PMMA Polymethylmethacrylate (acrylic) Base material: ABS (Acrylonitrile-butadiene-styren)
RL111G-1	\$7.25		1	[0.89 x 1.85]			
RL112G	\$44.00	PDF	10	19 x 73			
RL112G-1	\$4.75		1	[0.75 x 2.87]			
RL113G	\$53.00	PDF	10	51.4 x 60.3		Two 4mm slots	
RL113G-1	\$6.00		1	[2.02 x 2.37]			

Not recommended for applications involving moist air environments or water immersion.