

Commander Series Polycarbonate Pushbutton Enclosures

NEMA 1, 3R, 4X, 6P, and 12 with Lift-off Cover



Applications

AttaBox offers an all-polycarbonate product with blank covers or a choice of one- or two-hole pushbutton openings for both 22mm and 30mm hardware. These enclosures include the external flush wall design, unobstructed internal sidewalls, polycarbonate cover screws, and watertight seal.



COPC432



COPC1PB



COPC2PB

Construction

- High impact-resistant polycarbonate, gray in color with gloss finish
- Poured-in-place seamless gasket for water-tight and dust-tight seal
- Mounting wells located under the cover/ outside the gasket area
- Removable cover with polycarbonate screws (provided). Torque cover screws to 16 -20 lb-in (1.8-2.2 N-m)
- Rounded edges help to prevent collection of dust and debris
- Available with 22mm or 30mm pushbutton holes, or blank cover

Listings

- UL/cUL File # E64358
- NEMA Ratings 1, 3R, 4X, 6P, and 12
- [UL508A, UL50 and UL50e]
- IEC 60529 Ratings IP66, IP68
- Temperature Range -20°F to +240°F [-29°C to +115°C]
- Flammability Rating UL94-5VA
- Certifications cULus, IEC, REACH
- Outdoor UV Exposure (UL 746C) (f1) Rated



Polycarbonate Pushbutton Enclosures – Commander Series NEMA 1, 3R, 4X, 6P, and 12

Part Number	Price	# Holes	Pushbutton Size	Enclosure Size H x W x D
<u>COPC432</u>	\$59.00	0	—	4.34 x 3.16 x 2.79 [110 x 80 x 71]
<u>COPC533</u>	\$61.00	0	—	5.12 x 3.16 x 3.54 [130 x 80 x 90]
<u>COPC1PB</u>	\$64.00	1	30mm	4.34 x 3.16 x 2.79 [110 x 80 x 71]
<u>COPC2PB</u>	\$70.00	2	30mm	5.12 x 3.16 x 3.54 [130 x 80 x 90]
<u>COPC1PB22</u>	\$64.00	1	22mm	4.34 x 3.16 x 2.79 [110 x 80 x 71]
<u>COPC2PB22</u>	\$70.00	2	22mm	5.12 x 3.16 x 3.54 [130 x 80 x 90]

Dimensions in inches [millimeters].

Commander Series Polycarbonate Pushbutton Enclosures

NEMA 1, 3R, 4X, 6P, and 12



[YW-COPC1PB22](#)

Applications

AttaBox offers an all-polycarbonate product with blank covers or a choice of one- or two-hole pushbutton openings for both 22mm and 30mm hardware. These enclosures include the external flush wall design, unobstructed internal sidewalls, cover screws, and watertight seal.

Construction

- High impact-resistant polycarbonate, gloss finished black base with a yellow lid
- Poured-in-place seamless gasket for water-tight and dust-tight seal
- Mounting wells located under the cover/ outside the gasket area
- Removable cover with polycarbonate screws (provided). Torque cover screws to 16 -20 lb-in [1.8-2.2 N·m]
- Rounded edges help to prevent collection of dust and debris
- Available with 22mm or 30mm pushbutton holes, or blank cover

Listings

- UL/cUL File # E319779
- NEMA Ratings 1, 3R, 4X, 6P, and 12 [UL508A, UL50 and UL50e]
- IEC 60529 Ratings IP68
- Temperature Range -20°F to +240°F [-29°C to +115°C]
- Flammability Rating UL94-5VA
- Certifications cULus, IEC, REACH
- Outdoor UV Exposure (UL 746C) (f1) Rated



Polycarbonate Pushbutton Enclosures – Commander Series NEMA 1, 3R, 4X, 6P, 12

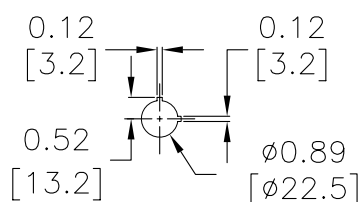
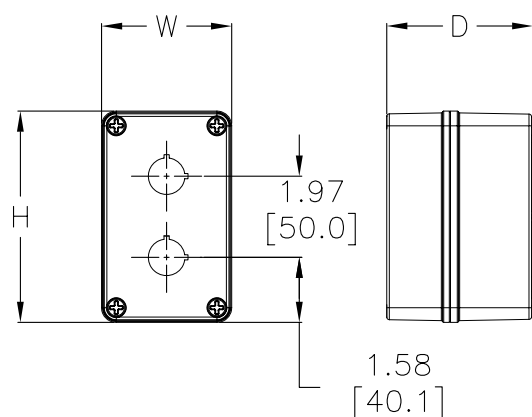
Part Number	Price	# Holes	Pushbutton Size (mm)	Enclosure Size H x W x D	Drawing Links
<u>YW-COPC1PB22</u>	\$79.00	1	22	4.34 x 3.16 x 2.79 [110 x 80 x 71]	<u>PDF</u>
<u>YW-COPC1PB</u>	\$79.00	1	30	4.34 x 3.16 x 2.79 [110 x 80 x 71]	<u>PDF</u>
<u>YW-COPC2PB22</u>	\$86.00	2	22	5.12 x 3.16 x 3.54 [130 x 80 x 90]	<u>PDF</u>
<u>YW-COPC2PB</u>	\$86.00	2	30	5.12 x 3.16 x 3.54 [130 x 80 x 90]	<u>PDF</u>

Dimensions in inches [millimeters].

Commander Series Polycarbonate Pushbutton Enclosures

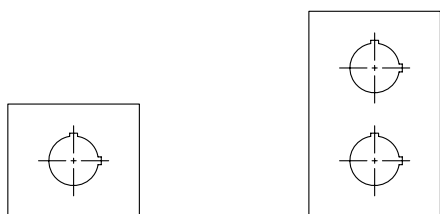
NEMA 1, 3R, 4X, 6P, and 12 with Lift-off Cover

Dimensions



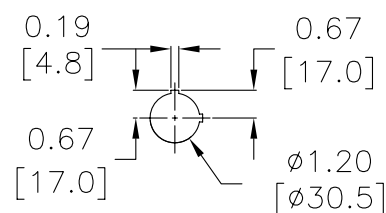
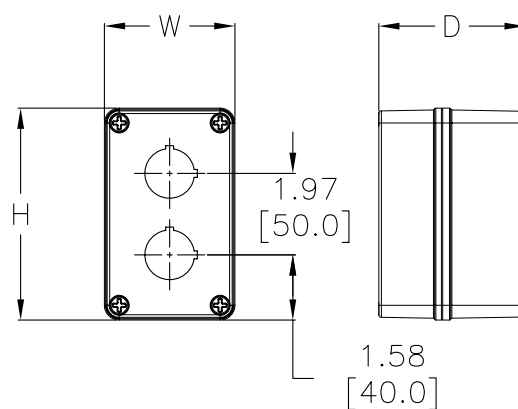
1PB-22/2PB-22
HOLE DETAIL

PB HOLE ARRANGEMENTS



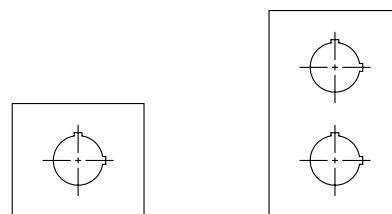
SINGLE PB-22

DOUBLE PB-22



1PB/2PB
HOLE DETAIL

PB HOLE ARRANGEMENTS



SINGLE PB

DOUBLE PB