

# Comepi Safety Cable Pull Switches

These safety cable pull switches are developed and manufactured according to IEC and EN European standards.

Easy to use, electromechanical safety switches provide:

- Visible operation
- Ability to switch large currents (10 A conventional thermal current)
- Precise operating points (consistency)
- Immunity to electromagnetic disturbances
- Electrically separated contacts (Zb)
- N.C. contacts with positive opening operation →
- Actuation Speed: 0.5 to 0.01 m/s [19.7 to 0.4 in/s]
- Conduit opening - 1/2" NPT threaded or adapter

Safety Cable Pull Selection Guide							
Part Number	Price	Max Length for Cable Pull	Safety Output Type	Monitoring Output Type	Cable Entry	Body Material	Drawing
<a href="#">SBM2K9900W02</a>	\$27.00	25m [82ft]	(2) N.C.	-	(1) 1/2in NPT	Die-cast aluminum	<a href="#">PDF</a>
<a href="#">SBM2K9900W03</a>	\$30.00	25m [82ft]	(3) N.C.	-	(1) 1/2in NPT	Die-cast aluminum	<a href="#">PDF</a>
<a href="#">SBM2K9900X11</a>	\$27.00	25m [82ft]	(1) N.C.	(1) N.O.	(1) 1/2in NPT	Die-cast aluminum	<a href="#">PDF</a>
<a href="#">SBM2K9900X12</a>	\$29.50	25m [82ft]	(2) N.C.	(1) N.O.	(1) 1/2in NPT	Die-cast aluminum	<a href="#">PDF</a>
<a href="#">SCM2K9900W02</a>	\$28.00	25m [82ft]	(2) N.C.	-	(3) 1/2in NPT	Die-cast aluminum	<a href="#">PDF</a>
<a href="#">SCM2K9900W03</a>	\$31.00	25m [82ft]	(3) N.C.	-	(3) 1/2in NPT	Die-cast aluminum	<a href="#">PDF</a>
<a href="#">SCM2K9900X11</a>	\$28.00	25m [82ft]	(1) N.C.	(1) N.O.	(3) 1/2in NPT	Die-cast aluminum	<a href="#">PDF</a>
<a href="#">SCM2K9900X12</a>	\$30.50	25m [82ft]	(2) N.C.	(1) N.O.	(3) 1/2in NPT	Die-cast aluminum	<a href="#">PDF</a>
<a href="#">SDM2K9800W02</a>	\$28.50	15m [49ft]	(2) N.C.	-	(3) 1/2in NPT	Zinc alloy	<a href="#">PDF</a>
<a href="#">SDM2K9800X11</a>	\$28.50	15m [49ft]	(1) N.C.	(1) N.O.	(3) 1/2in NPT	Zinc alloy	<a href="#">PDF</a>



[SBM2K9900W03](#)



[SCM2K9900W03](#)

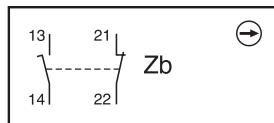


[SDM2K9800W02](#)

## Contacts Configuration Charts

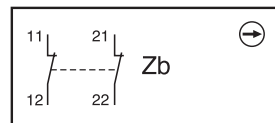
**Chart 1**

X11 Slow action  
1NO+1NC



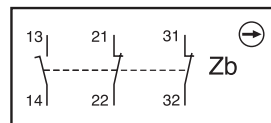
**Chart 2**

W02 Simultaneous slow action  
2NC



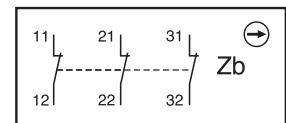
**Chart 3**

X12 Slow action  
1NO+2NC



**Chart 4**

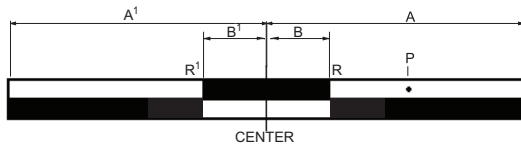
W03 Simultaneous slow action  
3NC



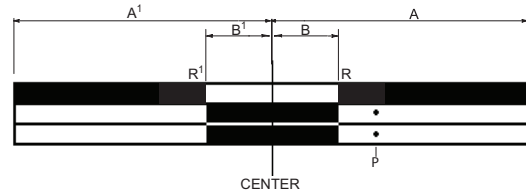
# Comepi Safety Cable Pull Switches

## Bar Charts For Cable Pulls

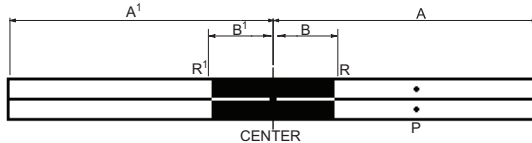
**X11**



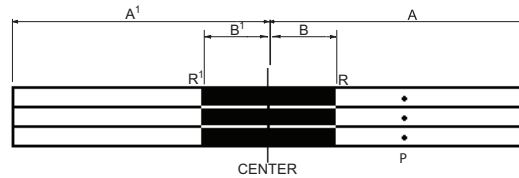
**X12**



**W02**



**W03**



**Pull Tension from Center**

A = Max. travel of the operator in mm

B = Tripping travel

P = Point from which positive opening is assured

R = Reset latch activates

**Lax Tension from Center**

A<sup>1</sup> = Max. travel of the operator in mm

B<sup>1</sup> = Tripping travel

R<sup>1</sup> = Reset latch activates

 = Contact open

 = Contact closed

Part Series	Contact Configuration	Displacement Values mm[in]							
		A1	B1	R1	Center*	B	R	P	A
SBM2K9900 SCM2K9900 SDM2K9800	X11	5.6 [0.22]	3.0 [0.12]	3.0 [0.12]	0 [0]	3.0 [0.12]	3.0 [0.12]	3.7 [0.15]	4.0 [0.16]
	W02								
	X12								
	W03								

Note:

\*At center line, green ring on switch will be visible.

Part Series	Contact Configuration	Force Values N [lbf]							
		A1	B1	R1	Center	B	R	P	A
SBM2K9900 SCM2K9900	X11	0 [0]	80 [17.98]	80 [17.98]	120 [26.98]	160 [35.97]	160 [35.97]	170 [38.22]	170 [38.22]
	W02								
	X12								
	W03								
SDM2K9800	X11	40 [8.99]	80 [17.98]	80 [17.98]	120 [26.98]	160 [35.97]	160 [35.97]	170 [38.22]	170 [38.22]
	W02								

# Comepi Safety Switches

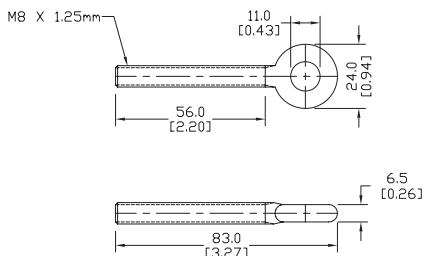


General Specifications				
	SBM	SCM	SDM	SP2
<b>Environmental</b>				
<b>Degree of Protection</b>	IP66	IP66	IP66	IP65
<b>Temperature Range</b>	-30° to 80°C [-22° to 176°F] Minimum temperatures assume that the atmosphere is free of moisture, which could cause moving parts to freeze up.			
<b>Rated Insulation Voltage</b>	500V			
<b>Pollution Degree</b>	Degree 3			
<b>Mechanical Ratings</b>				
<b>Mechanical Life</b>	Cable Pull: 500,000 operations Interlock: 1,000,000 operations			
<b>B10d</b>	Cable Pull: 1,000,000 operations Interlock: 2,000,000 operations			
<b>Enclosure Material</b>	Die-cast aluminum	Die-cast aluminum	Zinc alloy	Fiberglass reinforced plastic V0 class (UL94)
<b>Contact Blocks Rating</b>				
<b>Positive Opening</b>	Yes			
<b>Electrical Ratings</b>	AC15	24VAC = 10A 120VAC = 6A 400VAC = 4A		
	DC13	24VDC = 6A 125VDC = 0.55 A 250VDC = 0.4 A		
<b>Maximum Switching Frequency</b>	one cycle per second			
<b>Short Circuit Protection</b>	Cartridge fuses, general purpose, gl 10A-500V 10.3x38 1 100KA			
<b>Contact Resistance</b>	25 mΩ			
<b>Recommended Minimum Operating Speed</b>	500 mm per minute (applies only to slow-action contacts)			
<b>Terminals Marking</b>	According to IEC 60947-5-1			
<b>Wiring Connections</b>	2.08 mm <sup>2</sup> (14AWG) to 0.82 mm <sup>2</sup> (18AWG)			
<b>Terminal Max Tightening Torque</b>	0.8 N·m			
<b>Wiring Terminal Type</b>	Captive screw with self-lifting pressure plate			
<b>Tools Needed</b>				
Phillips screwdriver, #1 #2 / Hex wrench, 10mm				

# Comepi Safety Switches Accessories



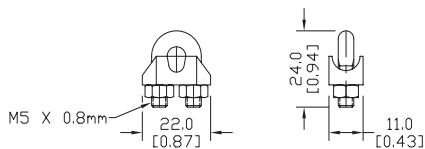
**OCC08**



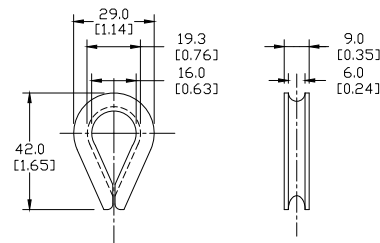
Safety Limit Switches Cable Pull Accessories			
Part Number	Price	Description	Weight (lb)
<b>OCC08</b>	\$1.00	Eye bolt	0.2
<b>MOR05</b>	\$1.00	Cable Clamp	0.1
<b>RED05</b>	\$1.00	Eye thimble	0.0
<b>FUN05M015</b>	\$15.50	15 meter length steel cable 5 mm diameter, Red	2.0
<b>FUN05M025</b>	\$23.50	25 meter length steel cable, 5 mm diameter, Red	3.3



**MOR05**



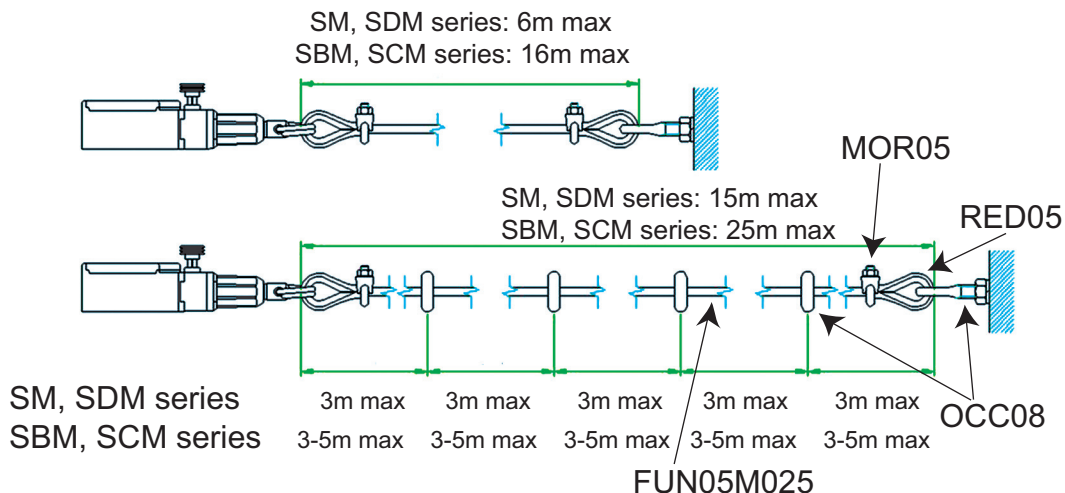
**RED05**



**FUN05M025**

All dimensions are in mm [in].

## Installation example



# Safety Products



*Warning: Safety products sold by AutomationDirect are Safety components only. The purchaser/installer is solely responsible for the application of these components and ensuring all necessary steps have been taken to assure each application and use meets all performance and applicable safety requirements and/or local, national and/or international safety codes as required by the application. AutomationDirect cannot certify that our products, used solely or in conjunction with other AutomationDirect or other vendors' products, will assure safety for any application. Any person using or applying any products sold by AutomationDirect is responsible for learning the safety requirements for their individual application and applying them, and therefore assumes all risks, and accepts full and complete responsibility, for the selection and suitability of the product for their respective application.*

*AutomationDirect does not provide design or consulting services, and cannot advise whether any specific application or use of our products would ensure compliance with the safety requirements for any application.*