

C-more Micro Programming Software

FREE software!

C-more Micro Programming Software can be downloaded at no charge or a USB version may be purchased by ordering EA-MG-PGMSW. The software requires a USB port or Ethernet connection* on your PC to connect to the **C-more** Micro panel. Software Help Files are included in the download.

This software programs all the **C-more** Micro panels (does not program the **C-more** 6-inch through 15-inch touch panels).



Copyright © AutomationDirect.com. All rights reserved.



Note: This software is used to program **C-more** Micro panels only.



Note: The Ethernet port is built in to EA3-S3ML and EA3-T4CL and EA3-T6CL requires the optional EA-ECOM module for Ethernet.

Part Number	Panel Software / Firmware Version Required
EA3-S3ML-RN	
EA3-S3ML-R	4.30 or later
EA3-S3ML	
EA3-T4CL	4.20 or later
EA3-T6CL	3.6 or later

C-more Micro Programming Software is a spin-off of its powerful sibling **C-more**

Touch Panel. It offers very high end features designed to reduce your configuration time. Simply drag and drop the objects from the object list (right side of screen) onto the screen construction area. Then configure your PLC tags and click on the objects you wish to use. Use the built-in simulator to review your work on your PC before ever downloading your project! The time saving benefits of the **C-more** Micro configuration software could easily pay for the panel. Check out www.CmoreMicro.com to download a free version.

Thumbnail project preview pane

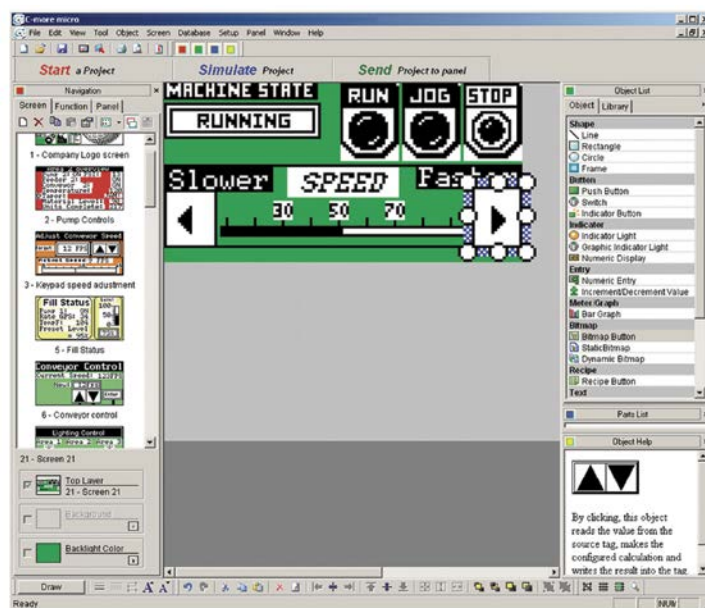
Helps keep track of multi-screen projects.

Built-in project simulator

- Runs your project on your PC
- Test all of your screens before downloading
- Time savings pays for the panel
- Simulate function keys and keypad bezel

Built-in user object/ screen libraries

Save time by re-using your custom objects and screens.



Scrolling object selection window

Lets you find the object you want fast. Just drag and drop it on the screen.

PC requirements

Following are the minimum system requirements for running **C-more** Micro Programming Software, EA-MG-PGMSW, on a PC:

- Windows® Operating System (See automationdirect.com for specific operating system requirements.)
- 150 MB free hard-disk space
- USB port for installing software from the USB, or internet access to download free programming software
- USB port to use with the correct Programming Cable Assembly for project transfer from the programming software to the panel

Scrolling help window

Gives you helpful information on each object

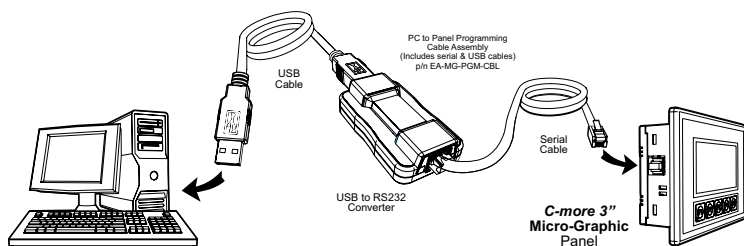
C-more Micro 3-inch EA1 Series Programming Connections

C-more STN Micro Programming Connection

Using the **C-more** Micro Programming Software for project development, STN **C-more** Micro panels can be connected to a PC (personal computer) by using **EA-MG-PGM-CBL**, the USB-to-RS-232 cable assembly.

- Connect the USB programming cable (included) from a USB port type A on the PC to the USB type B port on the converter (included). Next connect the serial programming cable from the converter's RJ12 port to the panel's RJ12 serial port. The panel receives power from the USB port of the PC that it is connected to through the USB to RS-232 converter assembly.

USB Connectivity



USB to RS-232 Programming Cable Assembly



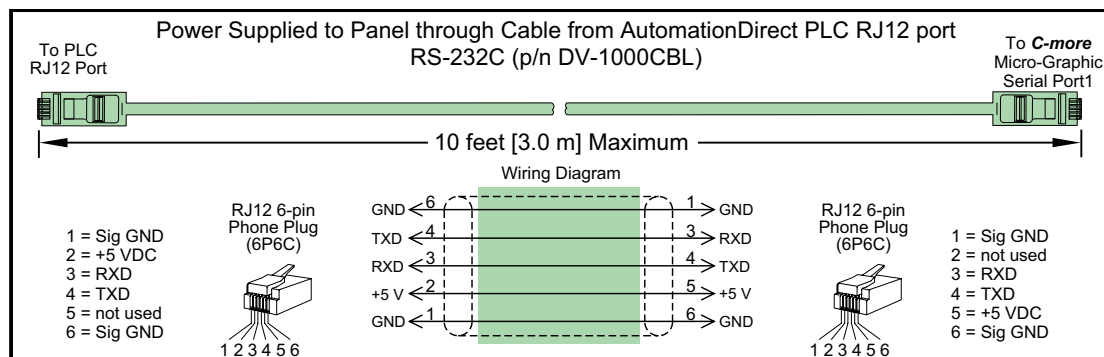
Part No. **EA-MG-PGM-CBL**

\$60.00

NOTE: **EA1-T4CL** does NOT use the **EA-MG-PGM-CBL** assembly. **EA1-T4CL** panel uses a standard USB A-to-B type cable such as **USB-CBL-AB6**.

USB to RS-232 Converter Specifications

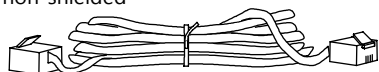
Part Number	EA-MG-PGM-CBL
Hardware	
USB Interface	USB Specification Rev. 1.1 Connector: USB Type B jack to accept USB Type B cable plug
Serial Interface	RS-232 (EIA-232-E) Connector: RJ12 phone jack 6p to accept RJ12 cable plug
Baud Rate	115.2 kbps Maximum
Input Voltage	5 VDC (Supplied thru serial interface cable.)
Power Consumption	50 mA (Does not include power to panel and/or bezel.)
Accessory Cables (included)	
USB Cable	USB Type A plug to PC on one end, USB Type B plug to converter on other end, 0.30 m [1 foot] length (* Note)
Serial Cable	RJ12 phone plug connectors on both ends, 2.0 m [6.56 feet] length (* Note)
Physical	
Dimensions	2.559" (W) x 1.417" (H) x 0.886" (D) [65.0 mm x 36.0 mm x 22.5 mm]
Weight	1.06 oz. [30 g]
Environmental	See Micro panel specifications at the beginning of this catalog section.
* Note: Maximum cable length for either the USB or serial cable should not exceed 2.0 m [6.56 feet] in length.	



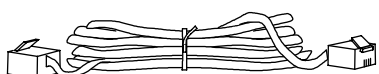
FA-CABKIT Universal Cable Kit

The table lists various devices that can be connected quickly with the universal cable kit. To determine which parts you need to use, simply use the table to find the connection you wish to make. Then match each device required for that connection with its part number. Snap the pieces together and you're ready to communicate. The following seven parts are included in the Universal Cable Kit. These parts are not sold separately, except for the **FA-15HD** high density 15-pin connector.

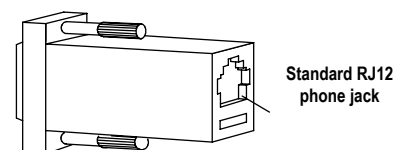
1. Standard phone-style connectors (RJ12), non-shielded



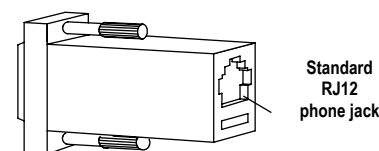
2. Standard phone and handset style connectors (RJ12, RJ11), non-shielded



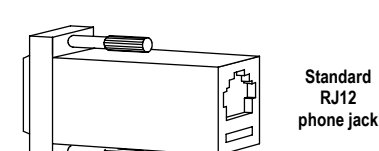
3. Universal 9-pin female D-sub connector



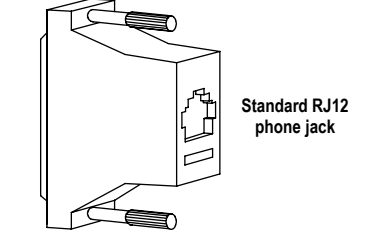
4. Universal 9-pin male D-sub connector



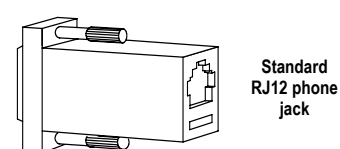
5. Universal 15-pin male D-sub connector



6. Universal 25-pin male D-sub connector



7. Universal 15-pin HD male D-sub connector (FA-15HD)



Universal cable kit

Items included in the universal cable kit

Device Description

- 7 ft. standard cable, 6P6C to 6P6C phone type
- 6 ft. adapter cable, 6P6C to 4P4C phone type
- AT connector 9-pin female to 6P6C connector
- (ASCII BASIC module) 9-pin male connector to 6P6C connector
- DL405 15-pin male connector to 6P6C connector
- DL405 CPU and DCM 25-pin male connector to 6P6C connector
- DL06, D2-250(-1) and D2-260 CPUs 15-pin HD male connector to 6P6C connector

Common connection examples

DL05, DL06, DL105, DL205, D3-350 and (D4-450 port 2)

CPU connections

Connection desired	Devices required
1. DL05/06/105/205/DL350/D4-450 to AT type computer 9-pin	1,3
2. CPU to DV-1000	1
3. CPU to DL205 or DL405 DCM	1,6
4. CPU to DL340 CPU	2
5. CPU to ABM (DL205 only)	1,4

DL06, D2-250(-1), D2-260 CPU port 2 connections

Connection desired	Devices required
1. DL06/250(-1)/260 port 2 to AT type computer 9-pin	1,3,7
2. DL06/250(-1)/260 port 2 to DV-1000	1,3,7

DL305 D3-232-DCU connections

Connection desired	Devices required
1. DCU to AT type computer 9-pin	1,6,3
2. DCU to DL405 series DCM (requires 2 kits)	1,6,6
3. DCU to DL340 CPU	2,6
4. DCU to ABM	1,6,4

DL305 CPU connections

Connection desired	Devices required
1. DL340 CPU to AT type computer 9-pin	2,3
2. DL340 CPU to DL405 series CPU/DCM	2,6
3. DL340 CPU to DL240 CPU	2
4. DL340 to ABM	2,4
5. DL340 CPU to DCU CPU	2,6

DL405 CPU (15-pin) top port connections

Connection desired	Devices required
1. DL405 CPU to AT type computer 9-pin	1,5,3
2. DL405 CPU to DV-1000	1,5

DL405 CPU (25-pin) bottom port connections

Connection desired	Devices required
1. DL405 CPU to AT type computer 9-pin	1,6,3
2. DL405 CPU to DL405 series DCM (requires 2 kits)	1,6,6
3. DL405 CPU to DL340 CPU	2,6
4. DL405 CPU to ABM	1,6,4