

# CLICK PLC Family Overview

## PLC System

The CLICK PLC family of components includes the original CLICK series as well as the new CLICK PLUS models. All are designed to offer practical PLC features in a compact and expandable design as well as best ease-of-use.

### System Configuration

Any powered CLICK/CLICK PLUS PLC by itself can be used as a complete PLC system

- All CLICK Basic, Standard, Ethernet Basic, and Ethernet Standard PLCs include 8 built-in inputs and 6 built-in outputs.
- CLICK Analog and Ethernet Analog PLCs have either 2 or 4 analog inputs and 2 analog outputs as well as 4 discrete inputs and 4 discrete outputs.
- The CLICK PLUS PLCs allow you to select or change the internal I/O using Option Slot Modules, including DC and AC discrete inputs and outputs, analog inputs and outputs, relay outputs and serial communications.
- Any CLICK system can be expanded with up to 8 additional Stackable I/O modules.
- The CLICK family features high-speed capability in Ethernet Basic, Ethernet Standard, Ethernet Analog PLCs, and CLICK PLUS PLCs.

### Communications

- The CLICK PLUS PLCs offer a mix of 10/100 Mbps Ethernet, Wi-Fi, RS-232, RS-485, USB and Bluetooth connectivity as well as MQTT capability.
- CLICK Basic, Standard and Analog PLCs have 2 built-in RS-232 communications ports while Standard and Analog PLCs also have 1 built-in RS-485 communications port.
- CLICK Ethernet Basic, Standard and Analog PLCs have 1 built-in 10/100 Mbps Ethernet communications port. Additionally, Ethernet Standard and Analog PLCs have an RS-485 port.
- For models with 2 RS-232 ports, the RS-232 Port 1 supports the Modbus RTU (slave only) protocol only and can be used as the programming port.
- All built-in RS-232 ports supply 5VDC, which allows you to connect a monochrome **C-more** Micro HMI panel without an additional power supply.
- Besides the RS-232 Port 1, all other serial ports support either Modbus RTU (master/slave) or ASCII (in/out) protocol.
- Ethernet ports can be used for both programming and Modbus TCP (client/server) and EtherNet/IP (adapter/server) Networking. MQTT is also available over Ethernet on CLICK PLUS PLCs.

### Analog I/O

CLICK Analog PLCs have built-in analog I/O (2- or 4-channel analog input and 2-channel analog output). CLICK PLUS PLCs allow you to add up to 4 analog inputs and 2 analog outputs in the Option Slot. Any CLICK/CLICK PLUS PLC can also be expanded with Analog input, output and combo I/O modules.

### Calendar / Clock & Battery Backup

All PLC units except CLICK Basic PLC units include a real-time clock and battery backup for the internal SRAM. The battery (sold separately) allows data to be retained for 3 years. Each CLICK PLUS PLC can synchronize its clock with a network time server.

### FREE Programming Software

The CLICK programming software can be downloaded free from [www.automationdirect.com/pn/C0-PGMSW](http://www.automationdirect.com/pn/C0-PGMSW).

### Easy-to-Use Instructions

The CLICK family of controllers supports a very simple but practical instruction set. The easy-to-use instructions include PID and cover most applications suitable for this DINnector class of PLC.

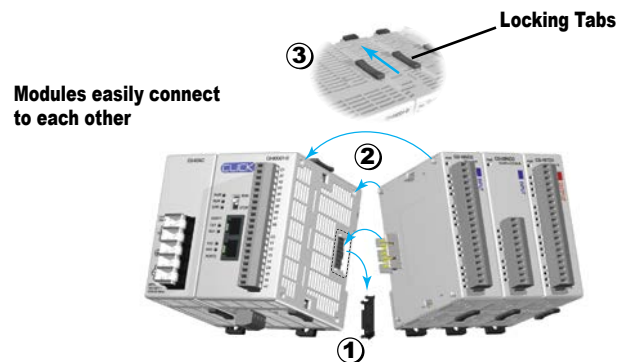
### 8,000 Steps of Program Memory

CLICK and CLICK PLUS PLCs can store up to 8,000 steps of ladder program in its flash EEPROM memory.

Use a CLICK family PLC as a stand-alone controller...



...or, expand the system by installing up to 8 additional I/O modules.



FREE programming software!



### 2-Year Warranty

All PLC units are covered under a 2-year warranty.



# CLICK PLC Family Overview

## CLICK vs. CLICK PLUS at a Glance

The table below gives a top-level comparison of key features of the CLICK and CLICK PLUS PLCs. Use it to quickly zero in on the PLCs that best match your needs. Details, features and specifications for each PLC are presented on pages dedicated to each model.

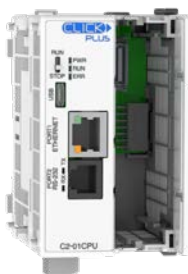
CLICK vs. CLICK PLUS PLCs Feature Comparison										
Items	Contents	CLICK PLC						CLICK PLUS PLC		
		Serial Models			Ethernet Models					
		Basic C0-00x	Standard C0-01x	Analog C0-02x	Basic C0-10x	Standard C0-11x	Analog C0-12x	C2-01CPU C2-01CPU-2	C2-02CPU C2-02CPU-2	C2-03CPU C2-03CPU-2
Hardware	microSD	-	-	-	-	-	-	-	-	Yes
	Wi-Fi	-	-	-	-	-	-	-	Yes	Yes
	Bluetooth (for PLC provisioning only)	-	-	-	-	-	-	-	Yes	Yes
	CPU Option Module Slot	-	-	-	-	-	-	Yes	Yes	Yes
	Micro USB (programming port)	-	-	-	-	-	-	Yes	Yes	Yes
	RJ45 (Ethernet)	-	-	-	Yes	Yes	Yes	Yes	-	Yes
	Analog I/O	-	-	Yes	-	-	Yes	Yes	Yes	Yes
	Terminal (RS-485)	-	Yes	Yes	-	Yes	Yes	-	-	Yes
	Battery Backup	-	Yes	Yes	Yes	Yes	Yes	Yes	Yes	Yes
	Real-Time Clock	-	Yes	Yes	Yes	Yes	Yes	Yes	Yes	Yes
	RJ12 (RS-232)	Yes	Yes	Yes	Yes	Yes	Yes	Yes	-	Yes
	Stackable I/O Support	Yes	Yes	Yes	Yes	Yes	Yes	Yes	Yes	Yes
Protocol	MQTT	-	-	-	-	-	-	Yes	Yes	Yes
	Network Time Service	-	-	-	-	-	-	Yes	Yes	Yes
	Modbus TCP (client/server)	-	-	-	Yes	Yes	Yes	Yes	Yes	Yes
	EtherNet/IP Implicit and Explicit (adapter server)	-	-	-	Yes	Yes	Yes	Yes	-	Yes
	Modbus RTU (master/slave)	Yes	Yes	Yes	Yes	Yes	Yes	Yes	-	Yes
	ASCII (in/out)	Yes	Yes	Yes	Yes	Yes	Yes	Yes	-	Yes
Network	DHCP	-	-	-	Yes	Yes	Yes	Yes	Yes	Yes
	SNTP	-	-	-	-	-	-	Yes	Yes	Yes
	DNS	-	-	-	-	-	-	Yes	Yes	Yes
Advanced Functions	Data Logging	-	-	-	-	-	-	-	-	Yes
	PID	-	-	-	Yes	Yes	Yes	Yes	Yes	Yes
	High-Speed Input	-	-	-	Yes	Yes	Yes	Yes*	Yes*	Yes*
	High-Speed Output	-	-	-	-	-	-	Yes*	Yes*	Yes*
	Run-Time Edits	-	-	-	Yes	Yes	Yes	Yes	Yes	Yes
Security	Requires PLC Password	-	-	-	Yes	Yes	Yes	Yes	Yes	Yes
	Disable Ports	-	-	-	Yes	Yes	Yes	Yes	Yes	Yes
	Session Security	-	-	-	Yes	Yes	Yes	Yes	Yes	Yes
	Strong Password Support	-	-	-	Yes	Yes	Yes	Yes	Yes	Yes
	Disable Ping Response	-	-	-	Yes	Yes	Yes	Yes	Yes	Yes
	Encrypted Password Transfer	-	-	-	Yes	Yes	Yes	Yes	Yes	Yes
CLICK PLUS Provisioning App	PLC Network Provisioning	-	-	-	-	-	-	-	Yes	Yes
Remote PLC App	Remote PLC Monitoring via Mobile Device	-	-	-	Yes	Yes	Yes	Yes	Yes	Yes

\* On CLICK PLUS CPUs, High-Speed Inputs and Outputs are available on Slot 0 only.

# CLICK PLC Family Overview

## CLICK PLUS PLC Units

CLICK PLUS PLC Units												
PLC	Number of Option Slots	Communication Ports						MicroSD Slot	Battery Backup	Run-Time Edit	Price	
		USB	Ethernet (Port 1)	RS-232 (Port 2)	RS-485 (Port 3)	Bluetooth	WLAN					
<a href="#">C2-01CPU</a>	1	Yes (MicroB)	Yes (10/100)	Yes	None	None	None	None	Yes	Yes	\$97.00	
<a href="#">C2-01CPU-2</a>	2										\$136.00	
<a href="#">C2-02CPU</a>	1		None	None	None	Yes (external antenna required)	Yes (external antenna required)	None			\$151.00	
<a href="#">C2-02CPU-2</a>	2										\$193.00	
<a href="#">C2-03CPU</a>	1		Yes (10/100)	Yes	Yes							\$205.00
<a href="#">C2-03CPU-2</a>	2											\$255.00



**C2-01CPU**



**C2-01CPU-2**



**C2-02CPU**



**C2-02CPU-2**



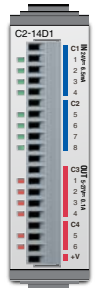
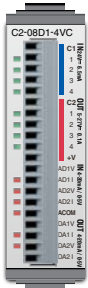
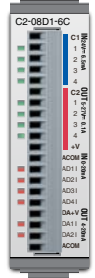
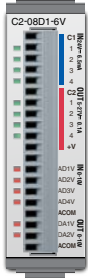
**C2-03CPU**



**C2-03CPU-2**

# CLICK PLC Family Overview

## CLICK PLUS Option Slot Modules

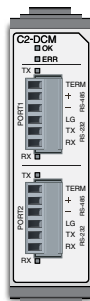
**C2-14xx****C2-08xx-4VC****C2-08xx-6C****C2-08xx-6V**

### CLICK PLUS Option Slot I/O Modules

Part Number	Discrete Input Types	Discrete Output Types	Analog Input Types	Analog Output Types	Price
<a href="#"><u>C2-14D1</u></a>	8 DC (sink/source) 8 points high-speed**	6 DC (sink) 3 points high-speed**	None	None	\$58.00
<a href="#"><u>C2-14D2</u></a>		6 DC (source) 3 points high-speed**			\$58.00
<a href="#"><u>C2-14DR</u></a>		6 relay			\$70.00
<a href="#"><u>C2-14AR</u></a>					\$70.00
<a href="#"><u>C2-14TTL</u></a>	8 TTL (sink/source) 8 points high-speed**	6 TTL (source) 3 points high-speed**			\$65.00
<a href="#"><u>C2-08D1-4VC*</u></a>	4 DC (sink/source) 4 points high-speed**	4 DC (sink) 2 points high-speed**	2 channel; voltage (0–5 VDC) / current (4–20 mA); selectable separately per channel, 12-bit	2 channel; voltage (0–5 VDC) / current (4–20 mA); selectable separately per channel, 12-bit	\$90.00
<a href="#"><u>C2-08D2-4VC*</u></a>		4 DC (source) 2 points high-speed**			\$90.00
<a href="#"><u>C2-08DR-4VC*</u></a>		4 relay			\$103.00
<a href="#"><u>C2-08AR-4VC*</u></a>					\$103.00
<a href="#"><u>C2-08D1-6C</u></a>	4 DC (sink/source) 4 points high-speed**	4 DC (sink) 2 points high-speed**	4 channel; current (0–20 mA), 12-bit	2 channel; current (4–20 mA), 12-bit	\$90.00
<a href="#"><u>C2-08D2-6C</u></a>		4 DC (source) 2 points high-speed**			\$90.00
<a href="#"><u>C2-08DR-6C</u></a>		4 relay			\$103.00
<a href="#"><u>C2-08AR-6C</u></a>					\$103.00
<a href="#"><u>C2-08D1-6V</u></a>	4 DC (sink/source) 4 points high-speed**	4 DC (sink) 2 points high-speed**	4 channel; voltage (0–10 VDC), 12-bit	2 channel; voltage (0–10 VDC), 12-bit	\$90.00
<a href="#"><u>C2-08D2-6V</u></a>		4 DC (source) 2 points high-speed**			\$90.00
<a href="#"><u>C2-08DR-6V</u></a>		4 relay			\$103.00
<a href="#"><u>C2-08AR-6V</u></a>					\$103.00

\* -4VC Option Slot modules require that you select analog I/O type (voltage or current) in the CLICK programming software.

\*\* High-speed Inputs and Outputs are only available when the Option Slot I/O Module is installed in Slot 0.

**C2-DCM****C2-NRED****C2-OPCUA**

### CLICK PLUS Option Slot Intelligent Modules

Part Number	Description	Price
<b>C2-DCM</b>	CLICK PLUS communication module, Modbus RTU and ASCII, 2 ports, (2) RS-232/RS-485 (6-pin terminal) port(s). For use with all CLICK PLUS PLCs. (2) C2-6TB terminal blocks included.	\$118.00
<b>C2-NRED</b>	CLICK PLUS Node-RED module, Node-RED and JavaScript, microSD card slot, (1) microB-USB and (1) Ethernet 10/100Base-T (RJ45) port(s). For use with all CLICK PLUS PLCs.	\$235.00
<b>C2-OPCUA</b>	CLICK PLUS communication module, OPC-UA Server and SNTP Client, 1 port, (1) microB-USB and (1) Ethernet 10/100Base-T (RJ45) port(s). For use with all CLICK PLUS PLCs.	\$195.00

# CLICK PLC Family Overview

## CLICK PLC Units

The thirty one CLICK PLC units are available with different combinations of built-in I/O types.



**Basic PLC**

CLICK Basic PLC Units			
Part Number	Inputs (8 points)	Outputs (6 points)	Price
<a href="#"><u>C0-00DD1-D</u></a>	DC (24VDC, sink/ source)	DC (0.1 A, 5–27 VDC, Sink)	\$92.00
<a href="#"><u>C0-00DD2-D</u></a>		DC (0.1 A, 24VDC, Source)	\$92.00
<a href="#"><u>C0-00DR-D</u></a>		Relay (1 A @ 6–27 VDC/6–240 VAC)	\$118.00
<a href="#"><u>C0-00AR-D</u></a>	AC (100–120 VAC)		\$128.00

- Basic PLC Unit Features:
- Eight discrete input points
- Six discrete output points
- Two RS-232 communications ports



**Standard PLC**

CLICK Standard PLC Units			
Part Number	Inputs (8 points)	Outputs (6 points)	Price
<a href="#"><u>C0-01DD1-D</u></a>	DC (24VDC, sink/ source)	DC (0.1 A, 5–24VDC, Sink)	\$139.00
<a href="#"><u>C0-01DD2-D</u></a>		DC (0.1 A, 24VDC, Source)	\$139.00
<a href="#"><u>C0-01DR-D</u></a>		Relay (1 A @ 6–27 VDC/ 6–240 VAC)	\$156.00
<a href="#"><u>C0-01AR-D</u></a>	AC (100–120 VAC)		\$156.00

- Standard PLC Unit Features:
- Eight discrete input points
- Six discrete output points
- Two RS-232 communications ports
- One RS-485 communications port
- Calendar / clock
- Battery backup (Battery, p/n [D2-BAT-1](#), sold separately)



**Analog PLC**

CLICK Analog PLC Units				
Part Number	Inputs (4 points)	Outputs (4 points)	Analog Inputs, Outputs	Price
<a href="#"><u>C0-02DD1-D</u></a>	DC (24VDC, sink/source)	DC (0.1 A, 5–24VDC, Sink)	2 channels in / 2 channels out; voltage (0–5 VDC) and current (4–20 mA) selectable, 12-bit resolution for both inputs and outputs	\$192.00
<a href="#"><u>C0-02DD2-D</u></a>		DC (0.1 A, 24VDC, Source)		\$195.00
<a href="#"><u>C0-02DR-D</u></a>		Relay (1 A @ 6–27 VDC/6–240 VAC)		\$204.00

- Analog PLC Unit Features:
- Four discrete input points and four discrete output points
- Two analog input points and two analog output points (not isolated)
- Two RS-232 communications ports
- One RS-485 communications port
- Calendar / clock
- Battery backup (Battery, p/n [D2-BAT-1](#), sold separately)



# CLICK PLC Family Overview

## CLICK PLC Units (continued)



**Ethernet  
Basic PLC**

CLICK Ethernet Basic PLC Units			
Part Number	Inputs (8 points)	Outputs (6 points)	Price
<a href="#"><u>C0-10DD1E-D</u></a>	DC (24VDC, sink/ source) 4 points high-speed	DC (0.1 A, 5–27 VDC, Sink)	\$183.00
<a href="#"><u>C0-10DD2E-D</u></a>		DC (0.1 A, 24DC, Source)	\$183.00
<a href="#"><u>C0-10DRE-D</u></a>		Relay (1A @ 6-27 VDC/6-240 VAC)	\$196.00
<a href="#"><u>C0-10ARE-D</u></a>	AC (100-120 VAC)		\$197.00

- Ethernet Basic PLC Unit Features:
- Eight discrete input points
- Six discrete output points
- One Ethernet communications port
- One RS-232 communications port
- Calendar / clock
- Battery backup (Battery, p/n [D2-BAT-1](#), sold separately)



**Ethernet  
Standard PLC**

CLICK Ethernet Standard PLC Units			
Part Number	Inputs (8 points)	Outputs (6 points)	Price
<a href="#"><u>C0-11DD1E-D</u></a>	DC (24VDC, sink/ source) 8 points high-speed	DC (0.1 A, 5–27 VDC, Sink)	\$212.00
<a href="#"><u>C0-11DD2E-D</u></a>		DC (0.1 A, 24VDC, Source)	\$212.00
<a href="#"><u>C0-11DRE-D</u></a>		Relay (1 A @ 6-27 VDC/ 6-240 VAC)	\$226.00
<a href="#"><u>C0-11ARE-D</u></a>	AC (100-120 VAC)		\$226.00

- Ethernet Standard PLC Unit Features:
- Eight discrete input points
- Six discrete output points
- One Ethernet communications port
- One RS-232 communications port
- One RS-485 communications port
- Calendar / clock
- Battery backup (Battery, p/n [D2-BAT-1](#), sold separately)

# CLICK PLC Family Overview

## CLICK PLC Units (continued)



**Ethernet  
Analog PLC**

CLICK Ethernet Analog PLC Units						
Part Number	Discrete Inputs (4 points)	Discrete Outputs (4 points)	Analog Inputs	Analog Outputs	External Power	Price
<a href="#"><u>C0-12DD1E-D</u></a>	DC (24V, sink/ source) 4 points high-speed	DC (0.1 A, 5–27 V, sink)	2 channel; voltage (0–5 VDC) / current (4–20 mA); selectable separately per channel, 12-bit	2 channel; voltage (0–5 VDC) / current (4–20 mA); selectable separately per channel, 12-bit	24VDC (Required for all PLC units)	\$253.00
<a href="#"><u>C0-12DD2E-D</u></a>		DC (0.1 A, 24V, source)				\$253.00
<a href="#"><u>C0-12DRE-D</u></a>		Relay (1 A @ 6-27 VDC/ 6-240 VAC)				\$269.00
<a href="#"><u>C0-12ARE-D</u></a>	AC (100-120 VAC)			\$269.00		
<a href="#"><u>C0-12DD1E-1-D</u></a>	DC (24V, sink/ source) 4 points high-speed	DC (sink)	4 channel; current (0–20 mA), 12-bit	2 channel; current (4–20 mA), 12-bit		\$253.00
<a href="#"><u>C0-12DD2E-1-D</u></a>		DC (source)				\$253.00
<a href="#"><u>C0-12DRE-1-D</u></a>		Relay (1 A @ 6-27 VDC/ 6-240 VAC)				\$269.00
<a href="#"><u>C0-12ARE-1-D</u></a>	AC (100-120 VAC)					\$269.00
<a href="#"><u>C0-12DD1E-2-D</u></a>	DC (24V, sink/ source) 4 points high-speed	DC (sink)	4 channel; voltage (0–10 VDC), 12-bit	2 channel; voltage (0–10 VDC), 12-bit		\$253.00
<a href="#"><u>C0-12DD2E-2-D</u></a>		DC (source)				\$253.00
<a href="#"><u>C0-12DRE-2-D</u></a>		Relay (1 A @ 6-27 VDC/ 6-240 VAC)				\$269.00
<a href="#"><u>C0-12ARE-2-D</u></a>	AC (100-120 VAC)					\$269.00

- Ethernet Analog PLC Unit Features:
- Four discrete input points
- Four discrete output points
- Two or Four analog input points (current or voltage)
- Two analog output points (current or voltage)
- One Ethernet communications port
- One RS-232 communications port
- One RS-485 communications port
- Calendar / clock
- Battery backup (Battery, p/n [D2-BAT-1](#), sold separately)

# CLICK PLC Family Overview

## Power Supplies

Two power supplies are offered.



**C0-00AC**



**C0-01AC**

## DC-DC Converter

This DC-to-DC converter can be used to power the CLICK/CLICK PLUS PLC from 12VDC input power.



**PSP24-DC12-1**

### CLICK Power Supplies

Part Number	Input Voltage	Output Current	Price
<b>C0-00AC</b>	85–264 VAC	0.5 A @ 24VDC	\$51.00
<b>C0-01AC</b>	85–264 VAC	1.3 A @ 24VDC	\$63.00

### 12VDC-to-24VDC Converter

Part Number	Input Voltage	Output Current	Price
<b>PSP24-DC12-1</b>	9.5–18 VDC	1.0 A @ 24VDC	\$113.00

## Discrete Input Modules

There are six discrete input modules available.



**C0-08ND3**



**C0-08ND3-1**



**C0-16ND3**



**C0-08NE3**



**C0-16NE3**



**C0-08NA**

### CLICK Discrete Input Modules

Part Number	Inputs	Price
<b>C0-08ND3</b>	DC (8 pts, 12–27 VDC)	\$48.00
<b>C0-08ND3-1</b>	DC (8 pts, 3.3–5 VDC)	\$48.00
<b>C0-16ND3</b>	DC (16 pts, 24VDC)	\$63.00
<b>C0-08NE3</b>	AC/DC (8 pts, 24 VAC/VDC)	\$50.00
<b>C0-16NE3</b>	AC/DC (16 pts, 24 VAC/VDC)	\$70.00
<b>C0-08NA</b>	AC (8 pts, 100–120 VAC)	\$57.00

## Discrete Output Modules

There are nine discrete output modules available.



**C0-08TD1**



**C0-08TD2**



**C0-16TD1**



**C0-16TD2**



**C0-08TA**



**C0-04TRS**



**C0-04TRS-10**



**C0-08TR**



**C0-08TR-3**

### CLICK Discrete Output Modules

Part Number	Outputs	Price
<b>C0-08TD1</b>	DC (8 pts, 0.3 A @ 3.3–27 VDC, Sink)	\$50.00
<b>C0-08TD2</b>	DC (8 pts, 0.3 A @ 12–24 VDC, Source)	\$51.00
<b>C0-16TD1</b>	DC (16 pts, 0.1 A @ 5–27 VDC, Sink)	\$64.00
<b>C0-16TD2</b>	DC (16 pts, 0.1 A @ 12–24 VDC, Source)	\$63.00
<b>C0-08TA</b>	AC (8 pts, 0.3A @ 17–240 VAC)	\$72.00
<b>C0-04TRS*</b>	Relay (4 pts, 7A @ 6–27 VDC/6–240 VAC)	\$62.00
<b>C0-04TRS-10</b>	Relay (4 pts, 10A @ 6–24 VDC/6–240 VAC)	\$70.00
<b>C0-08TR</b>	Relay (8 pts, 1A @ 6–27 VDC/6–240 VAC)	\$57.00
<b>C0-08TR-3</b>	Relay (8 pts, 3A @ 6–27 VDC/6–240 VAC)	\$61.00

\* To drive more than a 7A load or to use replaceable relays, consider using a C0-16TD1 output module with a ZL-RRL16-24-1 ZIPLink relay module and the correct ZIPLink cable (see Wiring System for CLICK/CLICK PLUS PLCs later in this section).



# CLICK PLC Family Overview

## Discrete Combo I/O Modules

There are three discrete combo modules available.



**C0-16CDD1**



**C0-16CDD2**



**C0-08CDR**

### CLICK Discrete Combo I/O Modules

Part Number	Input Type	Output Type	Price
<b><u>C0-16CDD1</u></b>	DC (8 pts, 24VDC)	DC (8 pts, 0.1 A @ 5–27 VDC, Sink)	\$82.00
<b><u>C0-16CDD2</u></b>	DC (8 pts, 24VDC)	DC (8 pts, 0.1 A @ 12–24 VDC, Source)	\$82.00
<b><u>C0-08CDR</u></b>	DC (4 pts, 12–24 VDC)	Relay (4 pts, 1A @ 6.25–24 VDC / 6–240 VAC)	\$73.00

## Specialty I/O Modules

There are two specialty I/O modules available.



**C0-08SIM**



**C0-04POT**

### CLICK Specialty Module

Part Number	Inputs	Price
<b><u>C0-08SIM</u></b>	8-pt, Toggle Switch	\$51.00
<b><u>C0-04POT</u></b>	4-pt, Potentiometer, 12-bit	\$68.00

# CLICK PLC Family Overview

## Analog Input Modules

There are four analog input modules available.



**C0-04AD-1**



**C0-04AD-2**



**C0-04RTD**



**C0-04THM**

### CLICK Analog Input Modules

Part Number	Analog Input Types	Price
<b><u>C0-04AD-1</u></b>	4 channel, current (0-20 mA), 13 bit	\$128.00
<b><u>C0-04AD-2</u></b>	4 channel, voltage (0-10 V), 13 bit	\$129.00
<b><u>C0-04RTD</u></b>	4 channel RTD input (0.1 degree °C/°F resolution), or resistive input (0 - 3125Ω, 0.1Ω or 0.01Ω resolution)	\$217.00
<b><u>C0-04THM</u></b>	4 channel thermocouple input (0.1 degree °C/°F resolution), or voltage input (-156.25 mV to 1.25 V, 16 bit)	\$217.00

## Analog Output Modules

There are two analog output modules available.



**C0-04DA-1**



**C0-04DA-2**

### CLICK Analog Output Modules

Part Number	Analog Output Types	Price
<b><u>C0-04DA-1</u></b>	4 channel, current sourcing (4-20 mA), 12-bit	\$175.00
<b><u>C0-04DA-2</u></b>	4 channel, voltage (0-10 V), 12-bit	\$175.00

## Analog Combo I/O Modules

There are two analog combo modules available.



**C0-4AD2DA-1**



**C0-4AD2DA-2**

### CLICK Analog Combo I/O Modules

Part Number	Analog Input Type	Analog Output Type	Price
<b><u>C0-4AD2DA-1</u></b>	4 channel, current (0-20 mA), 13-bit	2 channel, current sourcing (4-20 mA), 12-bit	\$226.00
<b><u>C0-4AD2DA-2</u></b>	4 channel, voltage (0-10 V), 13-bit	2 channel, voltage (0-10 V), 12-bit	\$217.00

# CLICK PLC Family Overview

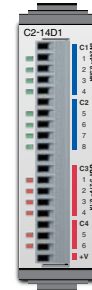
## What you'll need

Of course, what you'll need for your system depends on your particular application, but this overview shows you what you'll need for a simple system.

### 1. Select your **CLICK** or **CLICK PLUS** PLC unit.



### 2. If using a **CLICK PLUS** PLC, select an Option Slot Module if desired.



### 3. If you need additional I/O, select from 24 different types of Stackable I/O modules.



### 4. Select a 24VDC power supply.



or



### 5. Download the **FREE CLICK** programming software. [support.automationdirect.com/products/clickplcs.html](http://support.automationdirect.com/products/clickplcs.html)



### 6. Download the **FREE CLICK** mobile app. The **CLICK** mobile app is available for **iOS** and **Android**. It can connect to your **C2-02CPU** or **C2-03CPU** over **Bluetooth** to provision the PLC onto a **Wi-Fi** network. (PLC requires an external antenna)



# CLICK PLC Family Overview

## What you'll need (continued)

### 7. Select your PC-to-PLC programming cable.

If your PC has a USB port, use cable [EA-MG-PGM-CBL](#) to connect to the PLC port. If your PC has a 9-pin serial communications port, use programming cable [D2-DSCBL](#). If your PC has an Ethernet port, use [C5E-STPYL-C3](#) (crossover) or [C5E-STPYL-S3](#) (straight through) Ethernet cable. If your PC is on a network with a wireless access point, you can connect using one of our Wi-Fi antennas.

**[USB-CBL-AMICB6](#)**



**USB A to USB microB  
Programming Cable Assembly  
(CLICK PLUS Only)**

**[C5E-STPYL-C3](#) (crossover)  
[C5E-STPYL-S3](#) (straight through)**



**For Ethernet PLC Unit**

**or**

**[SE-ANT250](#)  
Wi-Fi/Bluetooth Dome Antenna  
([C2-02CPU](#) & [C2-03CPU](#) only)**



**or**

**[SE-ANT210](#)  
Wi-Fi/Bluetooth Whip Antenna  
([C2-02CPU](#) & [C2-03CPU](#) only)  
(nonmetal enclosure only)**



**[D2-DSCBL](#)**



**(PC requires RS-232 port  
to use this cable)**

**or**

**[EA-MG-PGM-CBL](#)**



**Connects to PC USB Port**

### 8. Select tools, wire, and provide power.

**Screwdriver  
[TW-SD-MSL-2](#)**



**Wire Strippers  
[DN-WS](#)**



**Hookup Wire**



# CLICK Programming Software

## FREE Software!

CLICK programming software can be downloaded at no charge.

The CLICK programming software is designed to be a user-friendly application, and the tools, layout, and software interaction provide ease-of-use and quick learning.

The simple operation of this software allows users to quickly develop a ladder logic program. The online help file provides information that will help you get acquainted with the software quickly.

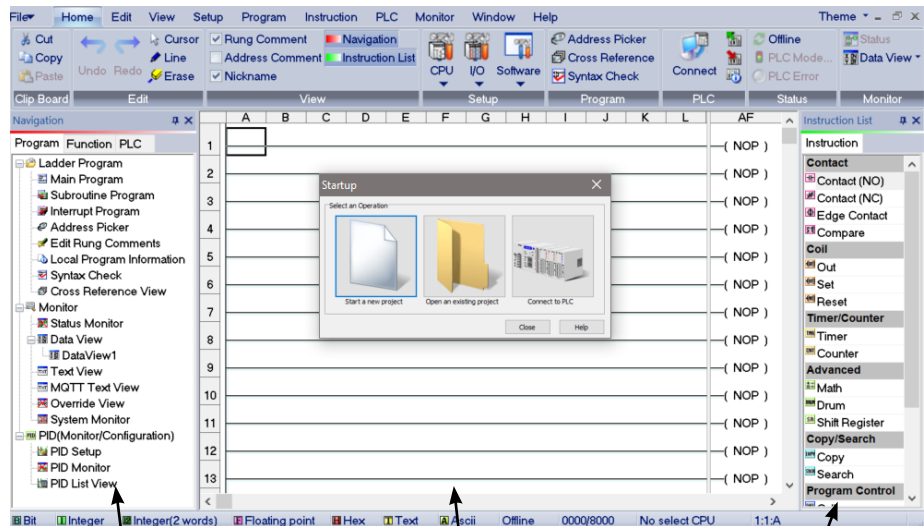
## C0-PGMSW Free Download

The programming software is also available for purchase on a USB for \$12.00



### Main window

The Main Window is displayed when the program opens. It is divided into Menus, Toolbars, and Windows that work together to make project development as simple as possible.



Navigation Window

Ladder Edit Window

Instruction List Window



# CLICK Programming Software

## Instructions

The easy-to-use instructions are described in the CLICK programming software online help file.

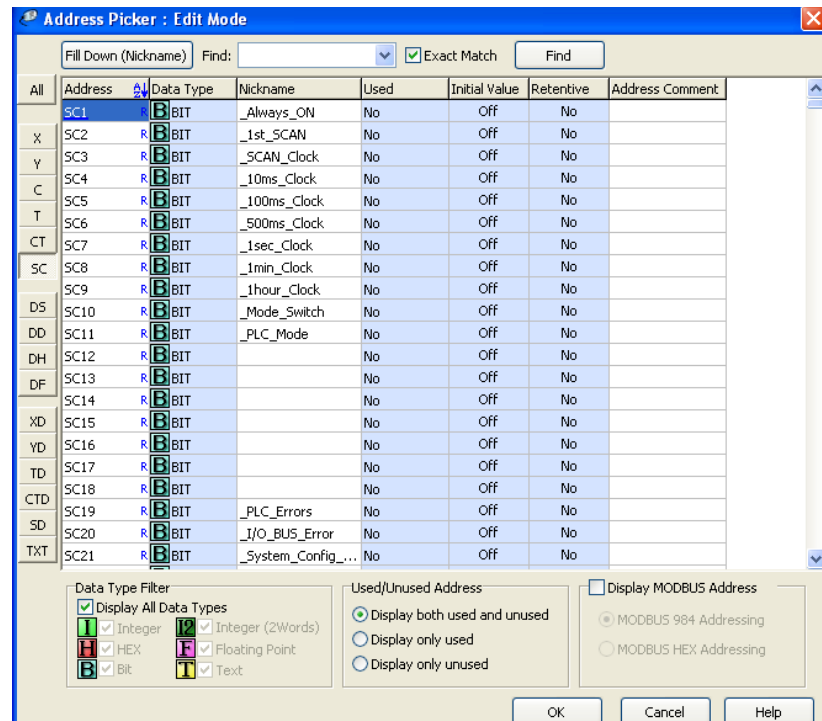
## Powerful Features!

CLICK programming software has amazingly powerful features for a free software product, such as

- Address picker
- Separate subroutine programs
- Separate interrupt programs
- Color rung comment feature
- Project loader
- Documentation is stored within the PLC Memory

### Address Picker

The Address Picker is a powerful multi-function memory table which can be used to assign nicknames, create address comments, and establish initial values for specific memory locations. It can assign specific memory locations to be retentive during power outages. The Address Picker also has powerful tools for sorting the memory table and making it easier to use.

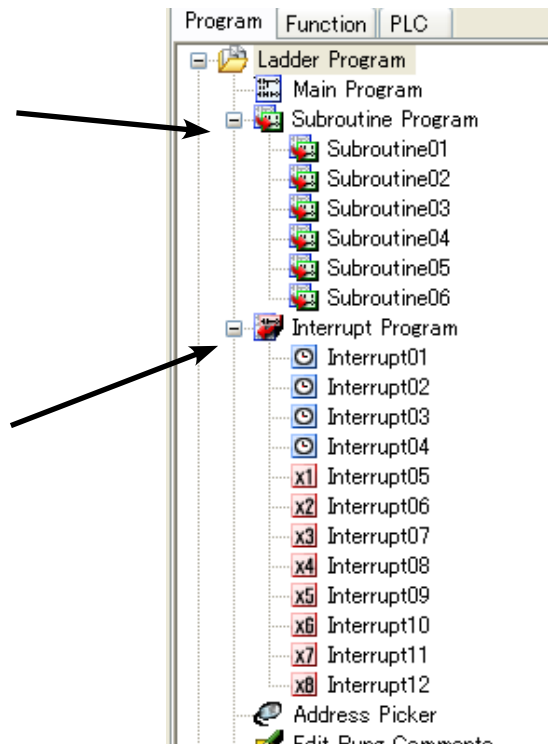


### Subroutine Programs

Subroutine programs can be created and named to isolate a body of program code that is run selectively. You can run up to 986 subroutine programs.

### Interrupt Programs

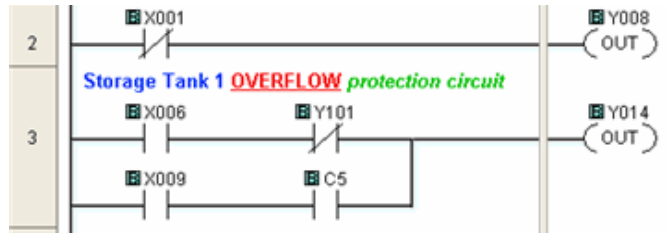
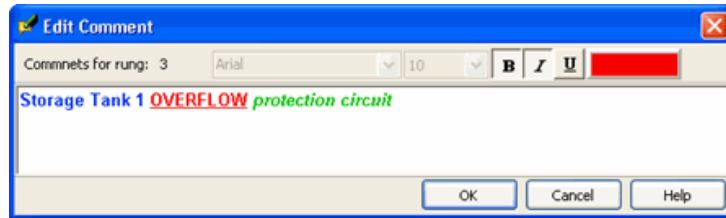
Interrupt programs are created and named. Interrupt Programs are used for: External Interrupts, Software Interrupts, High Speed Input features.



# CLICK Programming Software

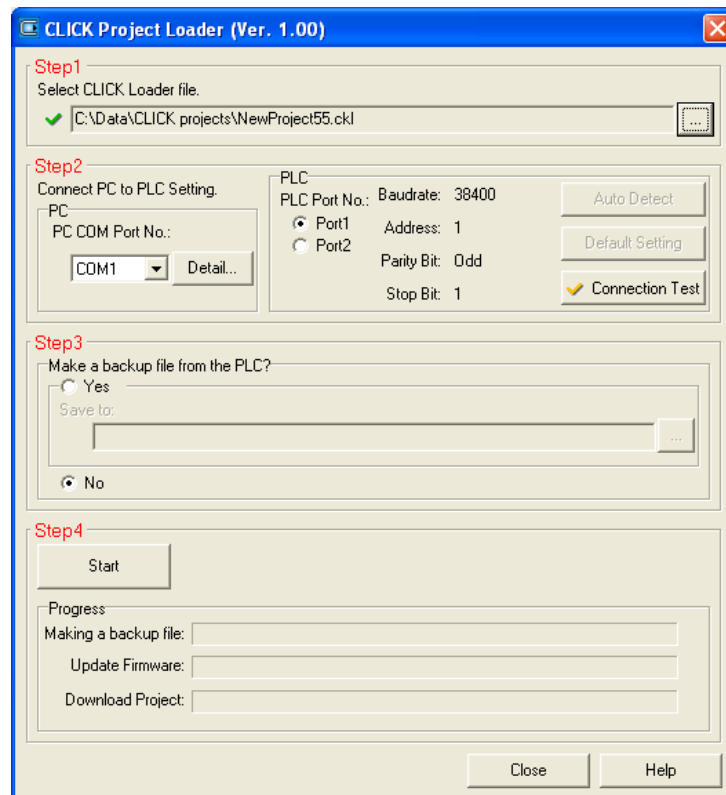
## Color Rung Comment

Easily create and edit rung comments with colors and three text styles. Comments are stored in the PLC memory for future reference.



## Project Loader

The CLICK programming software can export the CLICK project in an encrypted format. The exported file can be sent to the end user. Then the end user can download the file into the CLICK PLC with the tool called Project Loader.



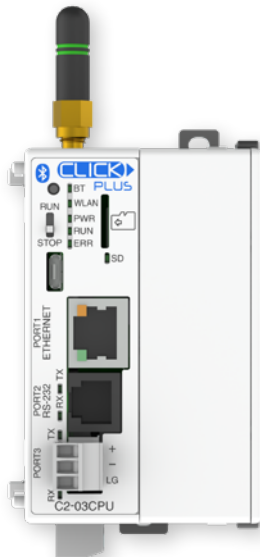
**NOTE:** Project Loader is a separate program from the CLICK programming software, but it is installed on the PC when the CLICK programming software is installed.

# CLICK PLUS Provisioning Mobile App

## Connect to your CLICK PLUS PLC with our FREE Provisioning Mobile App!

The CLICK PLUS Provisioning App connects your mobile device to a CLICK PLUS PLC via Bluetooth and offers a quick plug and play way to provision the CLICK PLUS PLC to connect to a wireless LAN.

The mobile app is available for free from either the iOS App Store or the Google Play Store. Just search for the app in your app store (CLICK PLUS Provisioning, published by Automationdirect.com).



# CLICK Remote PLC Mobile App

## Monitor or set designated values, track PLC errors, and check project info over Wi-Fi or Bluetooth with our FREE Remote PLC Mobile App!

The Remote PLC app provides real time monitoring and control for Ethernet- or Bluetooth-enabled CLICK and CLICK PLUS PLCs. It offers a quick method of connecting to a PLC to view and edit values in the PLC registers, as well as check the PLC project information, including the Error logs.

- **Multiple level user accounts** allow authorized users to view and edit Monitor Windows based on their permission levels setup in the project file.
- **Custom Monitor windows** can be created and stored to the PLC using the CLICK Programming software version 3.60 or later. Monitor Window access can be based on the user permissions.
- **Monitor and edit** designated discrete and numeric values within the PLC. Timer/counter values can easily be viewed and edited.
- **Track PLC status**, such as PLC error logs, scan times (min and max), and project file information.

The mobile app is available for free from either the iOS App Store or the Google Play Store. Just search for the app in your app store (Remote PLC, published by Automationdirect.com).

