

WEG CFW500 Compatible Accessories

Braking Resistors for WEG CFW500 AC Drives

Dynamic braking absorbs the motor regeneration energy when the motor is decelerated faster than it would if it was allowed to coast to a stop. The regeneration energy is dissipated by braking resistors. All drives have the braking function built-in and do not require a separate dynamic braking unit. The recommended open type or NEMA 1 type brake resistors available at AutomationDirect for each drive model are listed in the table below.

WEG CFW500 AC Drive Braking Component Selection																				
Drive Voltage	WEG MAT#	Drive Model (CFW500xxxG2)	Drive Ratings				Drive Brake Capacity - Max Torque			125% Braking Torque @ 10% Duty Cycle*										
			IP**	Input Voltage Phases	Drive Rated Amps (A)	Motor Power (hp)	Resistor (Ω)	Max Current (A)	Peak Power (kW)	Open Type Braking Resistor			NEMA1 Resistors with Thermal Switch							
										Part #	Qty.	Total Brake Current (A)	Part #	Qty.	Total Brake Current (A)					
230V	15570800	A01P6B2NB20		1/3	1.6	0.25	127	6	4.6	No Dynamic Braking (These Models)										
	15572819	A01P0T4NB20		3	1					No Dynamic Braking (These Models)										
	14990863	A01P6B2DB66DS	IP66D	1/3	1.6					127	6	4.6	GS-BR-400W150	1	2.6	BR-N1-240W150	1	2.6		
	14989840	A01P6B2DB66	IP66			1	1													
	14991103	A02P6B2DB66DS	IP66D			1	1													
	14990985	A02P6B2DB66	IP66			1	1													
	15571879	A02P6B2NB20			2.6															
	15572908	A01P6T4NB20		3	1.6	0.75	No Dynamic Braking (These Models)													
	14991753	A04P3B2DB66DS	IP66D	1/3	4.3	1	127	6	4.6	GS-BR-400W150	1	2.6	BR-N1-240W150	1	2.6					
	14991517	A04P3B2DB66	IP66								1			1						
	15571881	A04P3B2NB20									No Dynamic Braking (These Models)									
	15574655	B07P3B2DB20	IP20	1/3	7.3	2	39	10	3.9	GS-BR-400W040	1	9.8	BR-N1-280W50	1	7.8					
	14938005	A07P3B2DB66DS	IP66D								1			1						
	14937890	A07P3B2DB66	IP66								1			1						
	15572625	A07P0T2NB20									No Dynamic Braking (These Models)									
	15575067	B10P0B2DB20	IP20		7		No Dynamic Braking (These Models)													
	14938047	A10P0B2DB66DS	IP66D	3	10	3	27	15	6.1	GS-BR-400W040	1	9.8	BR-N1-280W50	1	7.8					
	14938041	A10P0B2DB66	IP66								1			1						
	15572689	A09P6T2NB20									No Dynamic Braking (These Models)									
	15575202	B16P0T2DB20	IP20		16	5	20	20	8	GS-BR-400W040	1	9.8	BR-N1-800W25	1	15.6					
	14938113	A16P0T2DB66DS	IP66D						1		1									
	14938111	A16P0T2DB66	IP66							GS-BR-1K0W020	1	19.5	BR-N1-800W18P0	1	21.7					
	15575701	C24P0T2DB20	IP20						1		1									
	14975838	B24P0T2DB66DS	IP66D	3	24	7.5	15	26	10.1	GS-BR-1K0W020	1	30.0	BR-N1-1K5W14P0	1	27.9					
	14975783	B24P0T2DB66	IP66																1	1
	15575716	D28P0T2DB20	IP20																1	1
	14938655	B28P0T2DB66DS	IP66D																1	1
	14938547	B28P0T2DB66	IP66							GS-BR-1K5W013	1	30.0	BR-N1-2K2W08P6	1	45.3					
	15576540	D47P0T2DB20	IP20						1		1									
	15577077	E56P0T2DB20	IP20		47	15	8.6	45	17.4	GS-BR-1K5W3P3	2S	59.1	BR-N1-2K2W06P8	1	57.4					
15342437	F77P0T2DB20	IP20		56	20	4.7	95	42.4	2S		1									
15342760	F88P0T2DB20	IP20		77	25	6	66.7	26.7	2S		1									
15342909	F0105T2DB20	IP20		88	30	3	133	53.1	2S	1	114.7									

Table continued on next page

* 10% Duty Cycle with maximum ON (braking) time for 10 seconds.

** IP66D stands for IP66 with disconnect.

Note: Where noted in resistor quantity, S = series and P = parallel

WEG CFW500 Compatible Accessories

Braking Resistors for WEG CFW500 AC Drives, continued

WEG CFW500 AC Drive Braking Component Selection																
Drive Voltage	WEG MAT #	Drive Model (CFW500xxxG2)	Drive Ratings				Drive Brake Capacity - Max Torque			125% Braking Torque @ 10% Duty Cycle*						
			IP**	Input Voltage Phases	Drive Rated Amps (A)	Motor Power (hp)	Resistor (Ω)	Max Current (A)	Peak Power (kW)	Open Type Braking Resistor			NEMA1 Resistors with Thermal Switch			
										Part #	Qty.	Total Brake Current (A)	Part #	Qty.	Total Brake Current (A)	
Table continued from previous page																
460V	14992148	A01P6T4DB66DS	3	IP66D	1.6	0.25	127	6	4.6	GS-BR-400W150	1	5.3	BR-N1-240W150	1	5.3	
	14992113	A01P6T4DB66									1			1		
	14991953	A01P0T4DB66DS									1			1		
	14991899	A01P0T4DB66			1	1										
	15573714	A02P6T4NB20			2.6	IP20	1	No Dynamic Braking (These Models)								
	15575568	B02P6T4DB20						1	5.3	BR-N1-240W150	1					
	14976517	A02P6T4DB66DS						1			1					
	14975888	A02P6T4DB66			1	1										
	15573819	A04P3T4NB20			4.3	IP20	2	No Dynamic Braking (These Models)								
	15575577	B04P3T4DB20						1	5.3	BR-N1-240W150	1					
	14976809	A04P3T4DB66DS						1			1					
	14976683	A04P3T4DB66			1	1										
	15573823	A06P1T4NB20			6.1	IP20	-	No Dynamic Braking (These Models)								
	15575665	B06P5T4DB20						2P	6.3	BR-N1-500W200	1					
	14977065	A06P5T4DB66DS						2P			1					
	14976814	A06P5T4DB66			2P	1										
	15575699	B10P0T4DB20			10	IP20	5	47	16	12	GS-BR-1K0W075	1	10.5	BR-N1-720W85	1	9.3
	14977266	A10P0T4DB66DS										1			1	
	14977261	A10P0T4DB66										1			1	
	15575707	C14P0T4DB20			14	IP20	7.5	33	24	19	GS-BR-1K5W043	1	18.4	BR-N1-720W85	1	9.3
	14977397	B14P0T4DB66DS										1			1	
	14977391	B14P0T4DB66										1			1	
	16675711	C16P0T4DB20			16	IP20	10	33	24	19	GS-BR-1K5W043	1	18.4	BR-N1-1K2W50	1	15.8
	14977556	B16P0T4DB66DS										1			1	
	14977552	B16P0T4DB66										1			1	
	15576919	D24P0T4DB20			24	IP20	15	22	34	25.4	GS-BR-1K5W043	2P	19.8	BR-N1-1K5W40	1	19.8
	14978365	B24P0T4DB66DS										2P			1	
	14977629	B24P0T4DB66										2P			1	
	15577021	D31P0T4DB20			31	IP20	20	18	48	41.5	GS-BR-1K0W020	2S2P	39.5	BR-N1-1K7W30	1	26.3
	14978573	B31P0T4DB66DS										2S2P			1	
	14978548	B31P0T4DB66										2S2P			1	
	15577211	E39P0T4DB20			39	IP20	25	8.6	78	52.3	GS-BR-1K5W013	2S2P	60.8	BR-N1-2K3W26	1	30.4
15577452	E49P0T4DB20	2S2P	1													
15733937	F77P0T4DB20	2S2P	1													
15734064	F88P0T4DB20	88	IP20	50	12	66.7	53.4	GS-BR-1K5W012	2S2P	65.8	BR-N1-4K7W14P7	1	53.7			
15734119	F0105T4DB20								2S2P			1				
15448371	G0142T4DB20								2S2P			1				
15448372	G0180T4DB20	180	IP20	100	3	267	208	Not offered			BR-N1-6K9W13P6	1	58.1			
15448373	G0211T4DB20								1			1				
				211	150	2.2	364	284				BR-N1-10K8W04P3	1	183.7		
												BR-N1-18K0W03P7	1	213.5		

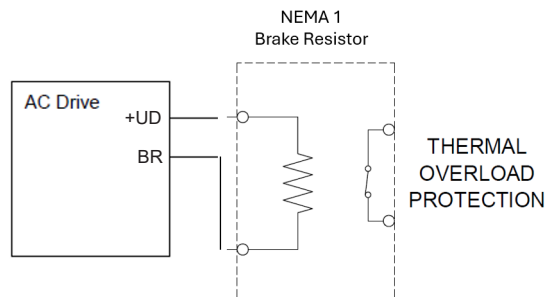
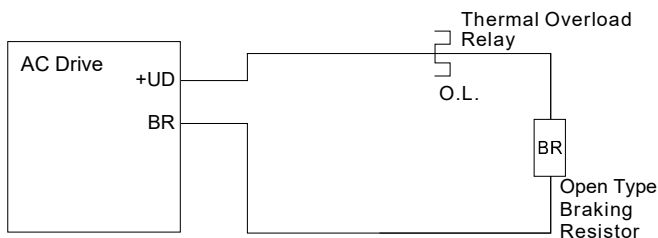
* 10% Duty Cycle with maximum ON (braking) time for 10 seconds.
 ** IP66D stands for IP66 with disconnect.
 Note: Where noted in resistor quantity, S = series and P = parallel

WEG CFW500 Compatible Accessories

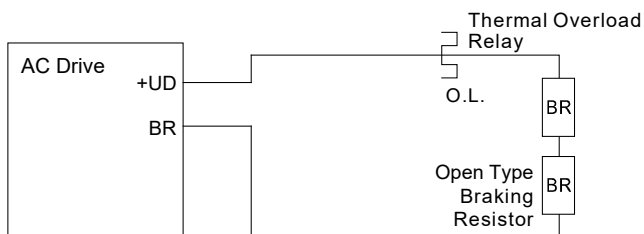
Brake Wiring

Use your drive's braking component selection table to determine the appropriate brake resistor model and configuration for your drive. Refer to the diagrams below for examples on how to wire each possible configuration.

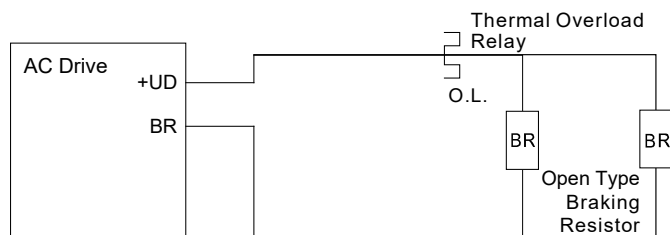
Drive + 1 Resistor or NEMA1 Resistor:



Drive + 2 Series Resistors:



Drive + 2 Parallel Resistors:



Drive + 2 Series and 2 Parallel Resistors:

