

WEG CFW500 Compatible Accessories

Braking Resistors for WEG CFW500 AC Drives

Dynamic braking absorbs the motor regeneration energy when the motor is decelerated faster than it would if it was allowed to coast to a stop. The regeneration energy is dissipated by braking resistors. All drives have the braking function built-in and do not require a separate dynamic braking unit. The recommended open type or NEMA 1 type brake resistors available at AutomationDirect for each drive model are listed in the table below.

WEG CFW500 AC Drive Braking Component Selection																				
Drive Voltage	WEG MAT#	Drive Model (CFW500xxxG2)	Drive Ratings				Drive Brake Capacity - Max Torque			125% Braking Torque @ 10% Duty Cycle*										
			IP**	Input Voltage Phases	Drive Rated Amps (A)	Motor Power (hp)	Resistor (Ω)	Max Current (A)	Peak Power (kW)	Open Type Braking Resistor			NEMA1 Resistors with Thermal Switch							
										Part #	Qty.	Total Brake Current (A)	Part #	Qty.	Total Brake Current (A)					
230V	15570800	A01P6B2NB20		1/3	1.6	0.25	127	6	4.6	No Dynamic Braking (These Models)										
	15572819	A01P0T4NB20		3	1					No Dynamic Braking (These Models)										
	14990863	A01P6B2DB66DS	IP66D	1/3	1.6					127	6	4.6	GS-BR-400W150	1	2.6	BR-N1-240W150	1	2.6		
	14989840	A01P6B2DB66	IP66			1	1													
	14991103	A02P6B2DB66DS	IP66D			1	1													
	14990985	A02P6B2DB66	IP66			1	1													
	15571879	A02P6B2NB20			2.6	No Dynamic Braking (These Models)														
	15572908	A01P6T4NB20		3	1.6	0.75	No Dynamic Braking (These Models)													
	14991753	A04P3B2DB66DS	IP66D	1/3	4.3	1	127	6	4.6	GS-BR-400W150	1	2.6	BR-N1-240W150	1	2.6					
	14991517	A04P3B2DB66	IP66								1			1						
	15571881	A04P3B2NB20									No Dynamic Braking (These Models)									
	15574655	B07P3B2DB20	IP20	1/3	7.3	2	39	10	3.9	GS-BR-400W040	1	9.8	BR-N1-280W50	1	7.8					
	14938005	A07P3B2DB66DS	IP66D								1			1						
	14937890	A07P3B2DB66	IP66								1			1						
	15572625	A07P0T2NB20									No Dynamic Braking (These Models)									
	15575067	B10P0B2DB20	IP20		7	No Dynamic Braking (These Models)														
	14938047	A10P0B2DB66DS	IP66D	3	10	3	27	15	6.1	GS-BR-400W040	1	9.8	BR-N1-280W50	1	7.8					
	14938041	A10P0B2DB66	IP66								1			1						
	15572689	A09P6T2NB20									No Dynamic Braking (These Models)									
	15575202	B16P0T2DB20	IP20		16	5	20	20	8	GS-BR-400W040	1	9.8	BR-N1-800W25	1	15.6					
	14938113	A16P0T2DB66DS	IP66D						1		1									
	14938111	A16P0T2DB66	IP66							GS-BR-1K0W020	1	19.5	BR-N1-800W18P0	1	21.7					
	15575701	C24P0T2DB20	IP20						1		1									
	14975838	B24P0T2DB66DS	IP66D	3	24	7.5	15	26	10.1	GS-BR-1K0W020	1	30.0	BR-N1-1K5W14P0	1	27.9					
	14975783	B24P0T2DB66	IP66																1	1
	15575716	D28P0T2DB20	IP20																1	1
	14938655	B28P0T2DB66DS	IP66D																1	1
	14938547	B28P0T2DB66	IP66							GS-BR-1K5W013	1	30.0	BR-N1-2K2W08P6	1	45.3					
	15576540	D47P0T2DB20	IP20						1		1									
	15577077	E56P0T2DB20	IP20		47	15	8.6	45	17.4	GS-BR-1K5W3P3	2S	59.1	BR-N1-2K2W06P8	1	57.4					
15342437	F77P0T2DB20	IP20		56	20	4.7	95	42.4	2S		1									
15342760	F88P0T2DB20	IP20		77		6	66.7	26.7	2S		1									
15342909	F0105T2DB20	IP20		88	25				2S	1		BR-N1-3K6W06P8	1	114.7						
				105	30	3	133	53.1		2S										

Table continued on next page

* 10% Duty Cycle with maximum ON (braking) time for 10 seconds.

** IP66D stands for IP66 with disconnect.

Note: Where noted in resistor quantity, S = series and P = parallel

WEG CFW500 Compatible Accessories

Braking Resistors for WEG CFW500 AC Drives, *continued*

WEG CFW500 AC Drive Braking Component Selection																		
Drive Voltage	WEG MAT#	Drive Model (CFW500xxxG2)	Drive Ratings				Drive Brake Capacity - Max Torque			125% Braking Torque @ 10% Duty Cycle*								
			IP**	Input Voltage Phases	Drive Rated Amps (A)	Motor Power (hp)	Resistor (Ω)	Max Current (A)	Peak Power (kW)	Open Type Braking Resistor			NEMA1 Resistors with Thermal Switch					
										Part #	Qty.	Total Brake Current (A)	Part #	Qty.	Total Brake Current (A)			
Table continued from previous page																		
460V	14992148	A01P6T4DB66DS	IP66D		1.6	0.25												
	14992113	A01P6T4DB66	IP66					127	6	4.6	GS-BR-400W150	1	5.3	BR-N1-240W150	1	5.3		
	14991953	A01P0T4DB66DS	IP66D														1	
	14991899	A01P0T4DB66	IP66		1	0.33											1	
	15573714	A02P6T4NB20										No Dynamic Braking (These Models)						
	15575568	B02P6T4DB20	IP20									GS-BR-400W150	1	5.3	BR-N1-240W150	1	5.3	
	14976517	A02P6T4DB66DS	IP66D					127	6	4.6	1							
	14975888	A02P6T4DB66	IP66								1							
	15573819	A04P3T4NB20										No Dynamic Braking (These Models)						
	15575577	B04P3T4DB20	IP20									GS-BR-400W150	1	5.3	BR-N1-240W150	1	5.3	
	14976809	A04P3T4DB66DS	IP66D					127	6	4.6	1							
	14976683	A04P3T4DB66	IP66								1							
	15573823	A06P1T4NB20	-									No Dynamic Braking (These Models)						
	15575665	B06P5T4DB20	IP20									GS-BR-300W250	2P	6.3	BR-N1-500W200	1	4.0	
	14977065	A06P5T4DB66DS	IP66D					100	8	6.4	1							
	14976814	A06P5T4DB66	IP66								1							
	15575699	B10P0T4DB20	IP20									GS-BR-1K0W075	1	10.5	BR-N1-720W85	1	9.3	
	14977266	A10P0T4DB66DS	IP66D					47	16	12	1							
	14977261	A10P0T4DB66	IP66								1							
	15575707	C14P0T4DB20	IP20	3								GS-BR-1K5W043	1	18.4	BR-N1-1K2W50	1	15.8	
	14977397	B14P0T4DB66DS	IP66D			14	7.5		33	24	19							1
	14977391	B14P0T4DB66	IP66															1
	16675711	C16P0T4DB20	IP20									GS-BR-1K5W043	1	18.4	BR-N1-1K2W50	1	15.8	
	14977556	B16P0T4DB66DS	IP66D					33	24	19	1							
	14977552	B16P0T4DB66	IP66								1							
	15576919	D24P0T4DB20	IP20									GS-BR-1K0W020	2S2P	39.5	BR-N1-1K5W40	1	19.8	
	14978365	B24P0T4DB66DS	IP66D					24	15	25.4	1							
	14977629	B24P0T4DB66	IP66								1							
	15577021	D31P0T4DB20	IP20									GS-BR-1K0W020	2S2P	39.5	BR-N1-1K7W30	1	26.3	
	14978573	B31P0T4DB66DS	IP66D					31	20	41.5	1							
	14978548	B31P0T4DB66	IP66								1							
15577211	E39P0T4DB20	IP20									GS-BR-1K5W013GS-BR-1K5W013	2S2P	60.8	BR-N1-2K3W26	1	30.4		
15577452	E49P0T4DB20	IP20					39	25	8.6	78							52.3	
15733937	F77P0T4DB20	IP20					49	30	8.6	78							52.3	
15734064	F88P0T4DB20	IP20									GS-BR-1K5W012	2S2P	65.8	BR-N1-4K7W14P7	1	53.7		
15734119	F0105T4DB20	IP20					77	40	12	66.7							53.4	
15448371	G0142T4DB20	IP20					88	50	12	66.7							53.4	
15448372	G0180T4DB20	IP20									Not offered			BR-N1-6K9W13P6	1	58.1		
15448373	G0211T4DB20	IP20					105	60	6.2	129							103.2	
							142	75	3	267							208	
											Not offered			BR-N1-10K8W04P3	1	183.7		
							180	100	3	267							208	
							211	150	2.2	364							284	
											Not offered			BR-N1-18K0W03P7	1	213.5		

* 10% Duty Cycle with maximum ON (braking) time for 10 seconds.

** IP66D stands for IP66 with disconnect.

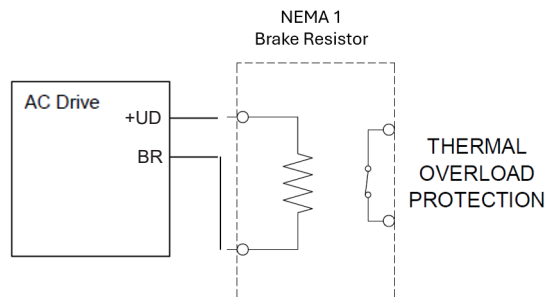
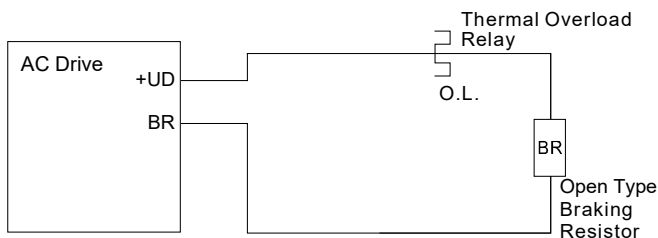
Note: Where noted in resistor quantity, S = series and P = parallel

WEG CFW500 Compatible Accessories

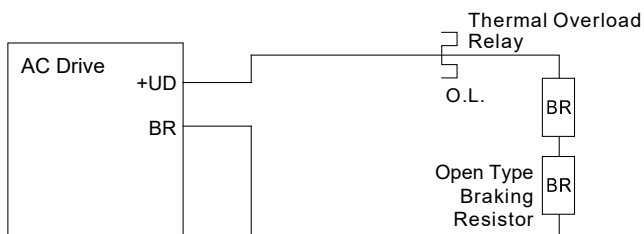
Brake Wiring

Use your drive's braking component selection table to determine the appropriate brake resistor model and configuration for your drive. Refer to the diagrams below for examples on how to wire each possible configuration.

Drive + 1 Resistor or NEMA1 Resistor:



Drive + 2 Series Resistors:



Drive + 2 Parallel Resistors:



Drive + 2 Series and 2 Parallel Resistors:

