

WEG CFW300 AC Drives – Accessories

CFW300-CRS232



CFW300-CRS485



CFW300-CUSB



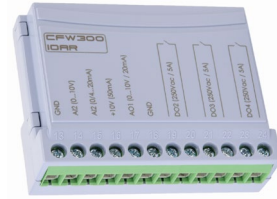
CFW300-IOADR



CFW300-IOAENC



CFW300-IOAR



CFW300-IODR



CFW300-KFA-S1-S2



CFW300-KFB-S2



CFW300-KHMIR



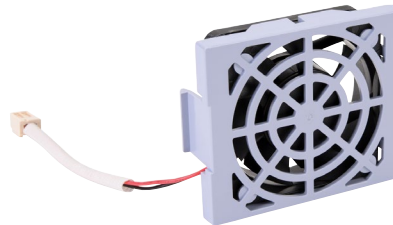
CFW100-CFW300-MMF



CFW300-FAN-B



CFW300-FAN-A



WEG CFW300 AC Drives Accessories			
Model #	Price	Description	Use With Drive #CFW...
CFW300-CRS232 ¹⁾	\$41.50	RS-232 serial communication module (Modbus-RTU)	
CFW300-CRS485 ¹⁾	\$41.50	RS-485 serial communication module (Modbus-RTU)	
CFW300-CUSB ¹⁾	\$44.00	USB communication module + 2m cable	
CFW300-IOADR ²⁾	\$105.00	WEG Electric CFW300 series temperature combo module with infrared remote control, thermistor, 1-channel input, 3-point output, 250 VAC, (3) Form A (SPST) relays. For use with WEG CFW300 series AC drives.	...all
CFW300-IOAENC ²⁾	\$73.00	WEG Electric CFW300 series encoder analog combo module, 400 kHz maximum switching frequency, 1-channel quadrature encoder input, Analog Input: 1-channel, Analog Output: 2-channel. For use with WEG CFW300 series AC drives.	
CFW300-IOAR ²⁾	\$72.00	WEG Electric CFW300 series relay analog combo module, Analog Input: 1-channel, current/voltage, Analog Output: 1-channel, current/voltage, Discrete Output: 3-point, relay, (3) Form A (SPST) relays. For use with WEG CFW300 series AC drives.	
CFW300-IODR ²⁾	\$55.00	WEG Electric CFW300 series discrete combo module, Input: 4-point, 24 VDC, sinking/sourcing, Output: 3-point, 250 VAC, relay, (3) Form A (SPST) relays, 5A/point. For use with WEG CFW300 series AC drives.	
CFW300-KFA-S1-S2	\$46.00	WEG Electric EMI input filter, 1-phase, 7.3A, 35mm DIN rail mount, EMI/RFI filtering. For use with WEG CFW300Axxx 1-phase AC drives.	...300A...
CFW300-KFB-S2	\$53.00	WEG Electric EMI input filter, 1-phase, 10A, 35mm DIN rail mount, EMI/RFI filtering. For use with WEG CFW300Bxxx 1-phase AC drives.	...300B...
CFW300-KHMIR ¹⁾	\$130.00	WEG Electric CFW300 series remote serial HMI, for use with WEG CFW300 series AC drives. (1) CFW300-CRS485 communication module, (1) 9.8ft/3m USB A to miniB-USB cable and installation hardware for optional panel mounting included.	...all
CFW100-CFW300-MMF	Retired	WEG Electric CFW300 series flash memory module, for use with WEG CFW300 series AC drives. (Requires three AAA batteries; not included.)	...all
CFW300-FAN-A	\$35.50	Spare/Replacement main cooling fan for CFW300 frame size A drives	...300A...
CFW300-FAN-B	\$35.50	Spare/Replacement main cooling fan for CFW300 frame size B drives	...300B...

1) Only one communication or HMI module per drive; mounted in upper slot
 2) Only one I/O expansion module per drive; mounted in lower slot