

# WEG CFW300 AC Drives – Accessories

**CFW300-CRS232**



**CFW300-CRS485**



**CFW300-CUSB**



**CFW300-IOADR**



**CFW300-IOAENC**



**CFW300-IOAR**



**CFW300-IODR**



**CFW300-KFA-S1-S2**



**CFW300-KFB-S2**



**CFW300-KHMIR**



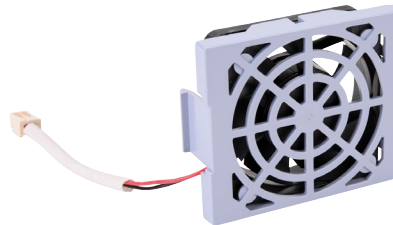
**CFW100-CFW300-MMF**



**CFW300-FAN-B**



**CFW300-FAN-A**



WEG CFW300 AC Drives Accessories			
Model #	Price	Description	Use With Drive #CFW...
<b>CFW300-CRS232</b> <sup>1)</sup>	\$41.50	RS-232 serial communication module (Modbus-RTU)	
<b>CFW300-CRS485</b> <sup>1)</sup>	\$41.50	RS-485 serial communication module (Modbus-RTU)	
<b>CFW300-CUSB</b> <sup>1)</sup>	\$44.00	USB communication module + 2m cable	
<b>CFW300-IOADR</b> <sup>2)</sup>	\$105.00	WEG Electric CFW300 series temperature combo module with infrared remote control, thermistor, 1-channel input, 3-point output, 250 VAC, (3) Form A (SPST) relays. For use with WEG CFW300 series AC drives.	...all
<b>CFW300-IOAENC</b> <sup>2)</sup>	\$73.00	WEG Electric CFW300 series encoder analog combo module, 400 kHz maximum switching frequency, 1-channel quadrature encoder input, Analog Input: 1-channel, Analog Output: 2-channel. For use with WEG CFW300 series AC drives.	
<b>CFW300-IOAR</b> <sup>2)</sup>	\$72.00	WEG Electric CFW300 series relay analog combo module, Analog Input: 1-channel, current/voltage, Analog Output: 1-channel, current/voltage, Discrete Output: 3-point, relay, (3) Form A (SPST) relays. For use with WEG CFW300 series AC drives.	
<b>CFW300-IODR</b> <sup>2)</sup>	\$55.00	WEG Electric CFW300 series discrete combo module, Input: 4-point, 24 VDC, sinking/sourcing, Output: 3-point, 250 VAC, relay, (3) Form A (SPST) relays, 5A/point. For use with WEG CFW300 series AC drives.	
<b>CFW300-KFA-S1-S2</b>	\$46.00	WEG Electric EMI input filter, 1-phase, 7.3A, 35mm DIN rail mount, EMI/RFI filtering. For use with WEG CFW300Axxx 1-phase AC drives.	...300A...
<b>CFW300-KFB-S2</b>	\$53.00	WEG Electric EMI input filter, 1-phase, 10A, 35mm DIN rail mount, EMI/RFI filtering. For use with WEG CFW300Bxxx 1-phase AC drives.	...300B...
<b>CFW300-KHMIR</b> <sup>1)</sup>	\$130.00	WEG Electric CFW300 series remote serial HMI, for use with WEG CFW300 series AC drives. (1) CFW300-CRS485 communication module, (1) 9.8ft/3m USB A to miniB-USB cable and installation hardware for optional panel mounting included.	...all
<b>CFW100-CFW300-MMF</b>	\$107.00	WEG Electric CFW300 series flash memory module, for use with WEG CFW300 series AC drives. (Requires three AAA batteries; not included.)	...all
<b>CFW300-FAN-A</b>	\$35.50	Spare/Replacement main cooling fan for CFW300 frame size A drives	...300A...
<b>CFW300-FAN-B</b>	\$35.50	Spare/Replacement main cooling fan for CFW300 frame size B drives	...300B...

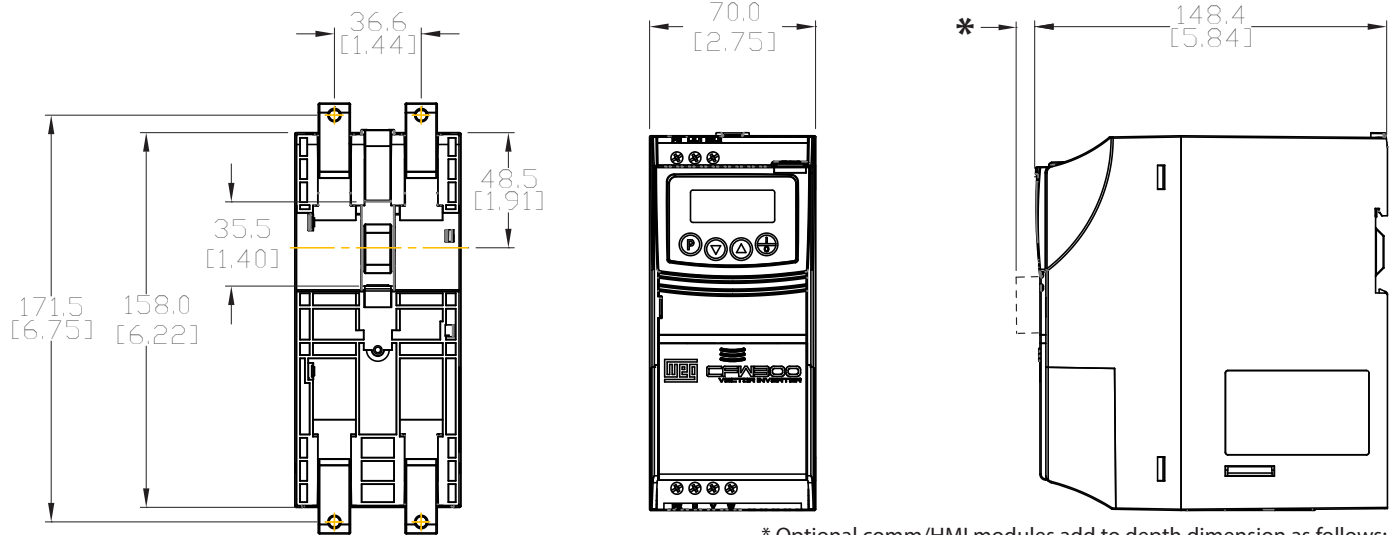
1) Only one communication or HMI module per drive; mounted in upper slot  
 2) Only one I/O expansion module per drive; mounted in lower slot

# WEG CFW300 AC Drives – Dimensions

( mm [in] )

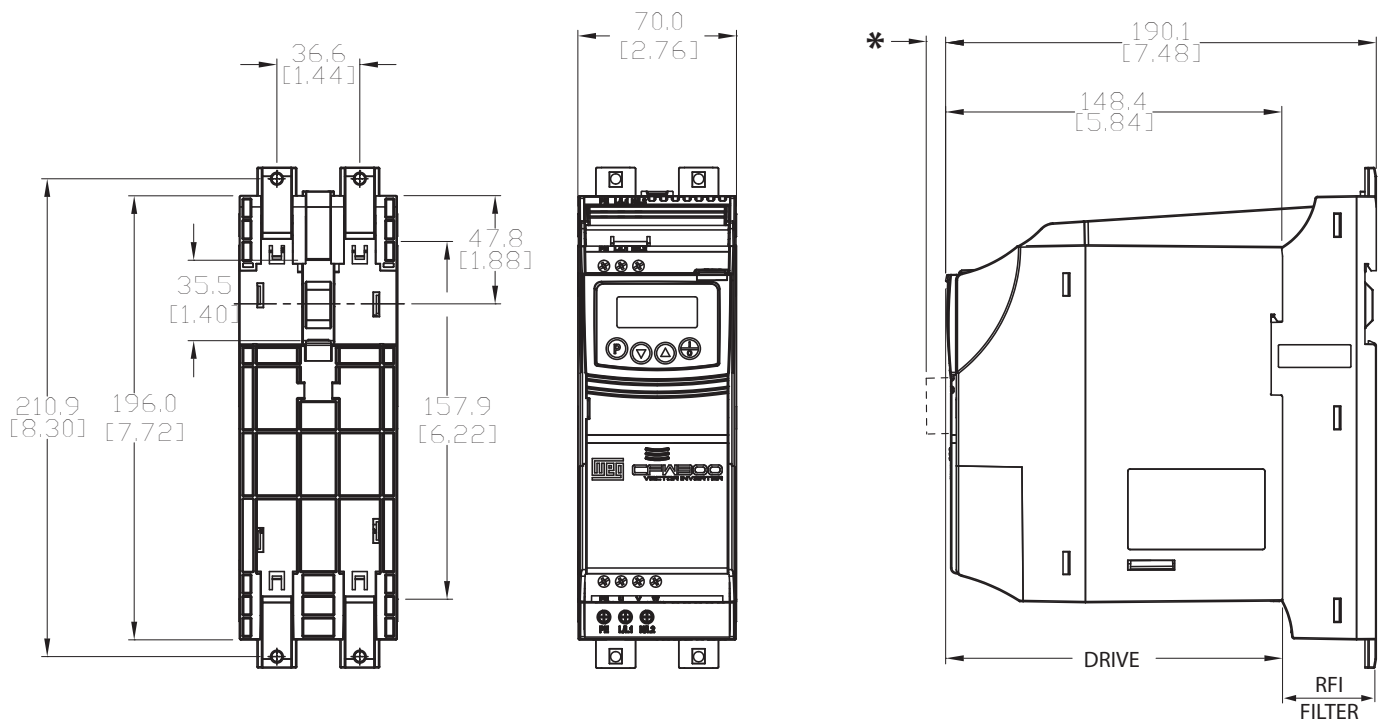
See our website ([www.AutomationDirect.com](http://www.AutomationDirect.com)) for complete engineering drawings.

## CFW300 Drive Frame Size A (without RFI Filter)



\* Optional comm/HMI modules add to depth dimension as follows:  
 CFW300-KHMIR, -RS232, or -RS485 adds: 21.2 [0.84]  
 CFW300-CUSB adds: 14.6 [0.58]

## CFW300 Drive Frame Size A (with RFI Filter CFW300-KFA-S1-S2)



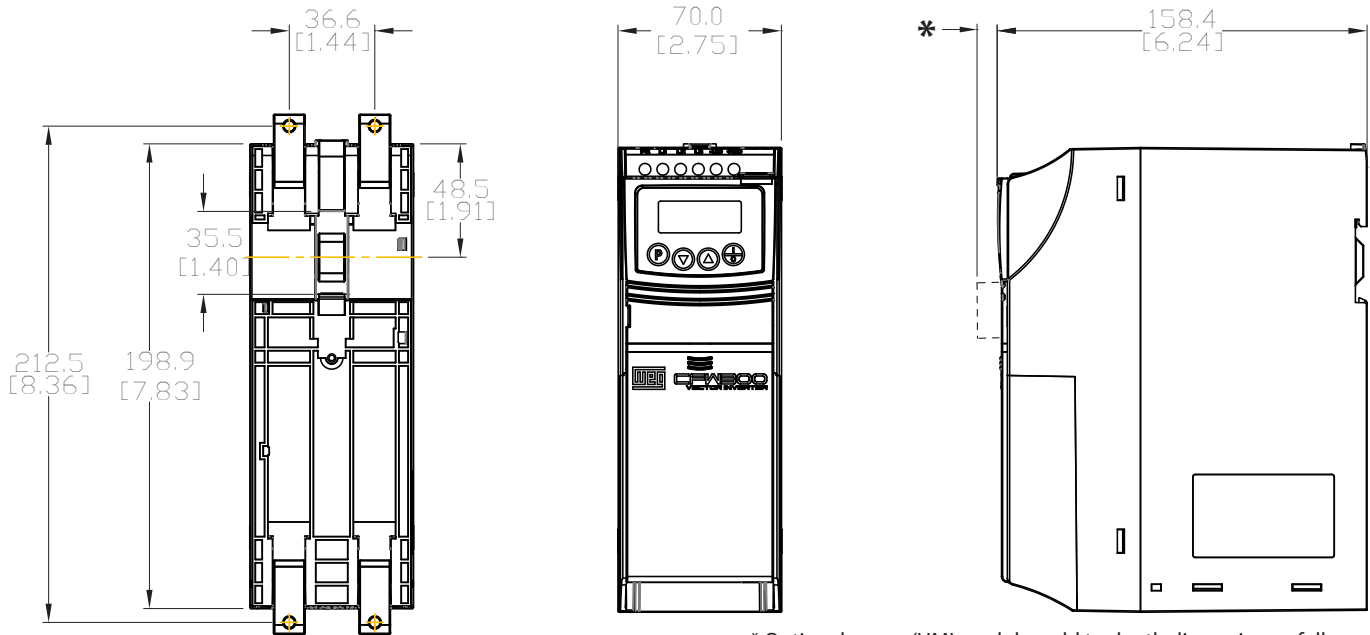
\* Optional comm/HMI modules add to depth dimension as follows:  
 CFW300-KHMIR, -RS232, or -RS485 adds: 21.2 [0.84]  
 CFW300-CUSB adds: 14.6 [0.58]

# WEG CFW300 AC Drives – Dimensions

( mm [in] )

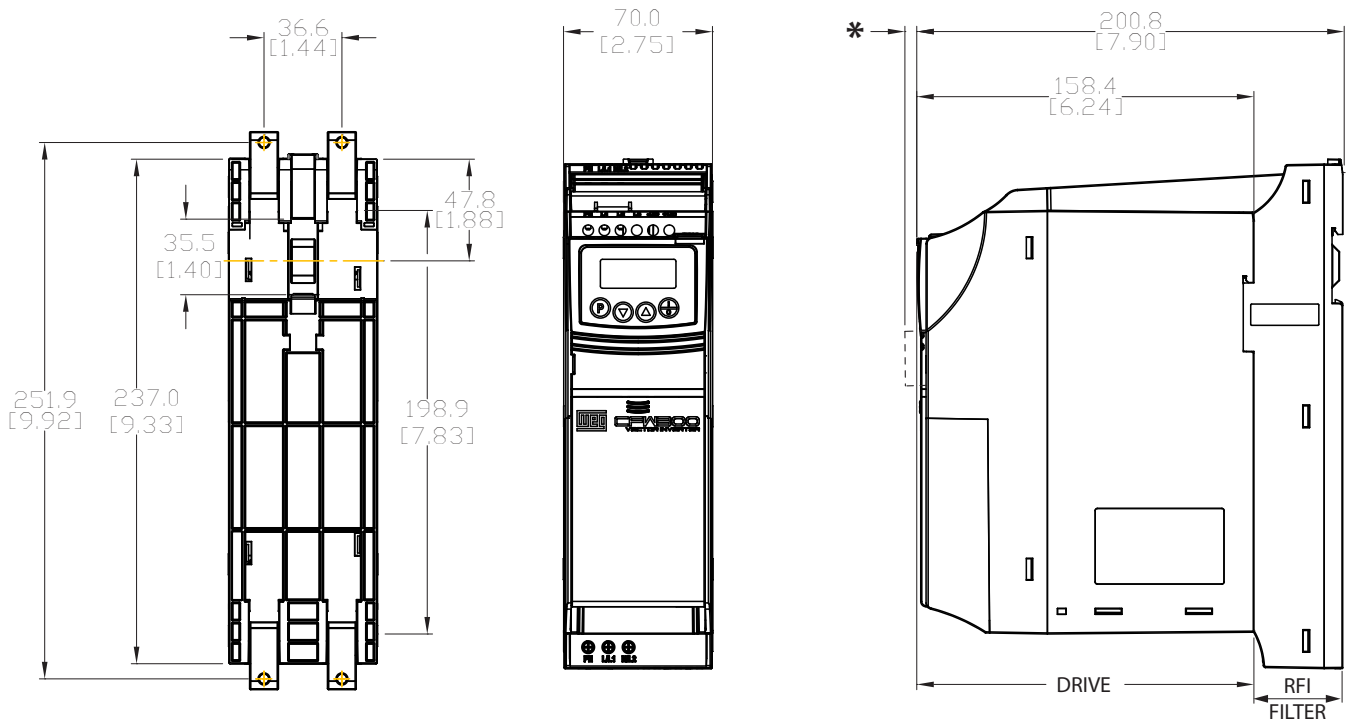
See our website ([www.AutomationDirect.com](http://www.AutomationDirect.com)) for complete engineering drawings.

## CFW300 Drive Frame Size B (without RFI Filter)



\* Optional comm/HMI modules add to depth dimension as follows:  
 CFW300-KHMIR, -RS232, or -RS485 adds: 21.2 [0.84]  
 CFW300-CUSB adds: 14.6 [0.58]

## CFW300 Drive Frame Size B (with RFI Filter CFW300-KFB-S2)



\* Optional comm/HMI modules add to depth dimension as follows:  
 CFW300-KHMIR, -RS232, or -RS485 adds: 21.2 [0.84]  
 CFW300-CUSB adds: 14.6 [0.58]