

# BRX Pluggable Option Modules (POM)

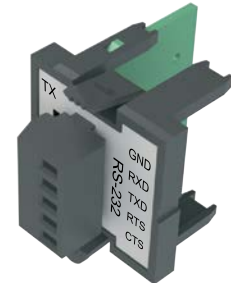
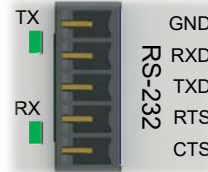
## BX-P-SER2-TERMFC

**\$79.00**

The RS-232 POM can be connected to the Do-more! Designer programming software, Modbus RTU master or slave devices,

DirectLogic PLCs via K-Sequence protocol, as well as devices that send or receive non-sequenced ASCII strings or characters.

Pinout	RS232
1	GND
2	RXD
3	TXD
4	RTS
5	CTS



Removable Connector Included

### BX-P-SER2-TERMFC Specifications

<b>Description</b>	Non-isolated Serial port that can communicate via RS-232. Includes ESD protection and built-in surge protection.
<b>Supported Protocols</b>	Do-more!™ Protocol (Default) Modbus RTU (Master & Slave) K-Sequence (Slave) ASCII (In & Out)
<b>Data Rates</b>	1200, 2400, 4800, 9600, 19200, 38400, 57600, and 115200 Baud
<b>Default Settings</b>	115200bps, No Parity, 8 Data Bits, 1 Stop Bit, Station #1
<b>Port Status LED</b>	Green LED is illuminated when active for TXD and RXD
<b>Port Type</b>	Removable 5-pin terminal strip 3.5 mm pitch
<b>RS-232 TX</b>	RS-232 Transmit output
<b>RS-232 RX</b>	RS-232 Receive input
<b>RS-232 GND</b>	Logic ground
<b>RS-232 CTS</b>	RS-232 Clear to Send input
<b>RS-232 RTS</b>	RS-232 Request to Send input
<b>RS-232 Maximum Output Load (TXD/RTS)</b>	3kΩ, 1000pf
<b>RS-232 Minimum Output Voltage Swing</b>	±5V
<b>RS-232 Output Short Circuit Protection</b>	±15mA
<b>Cable Requirements</b>	RS-232 use P/N L19853-XXX from automationdirect.com
<b>Maximum Distance</b>	6 meters [20 foot] recommended maximum
<b>Replacement Connector</b>	ADC Part # <a href="#">BX-RTB05S</a>
<b>Hot Swappable</b>	Yes
<b>Software Version Required</b>	Do-more! Designer version 2.7 or later

## BX-RTB05S

**\$4.50**

Replacement removable connector.



### BX-RTB05S Connector Specifications

<b>Part Number</b>	<a href="#">BX-RTB05S</a>
<b>Connector Type</b>	Screw type
<b>Wire Exit</b>	180-degree
<b>Pitch</b>	3.5 mm
<b>Screw Size</b>	M2
<b>Recommended Screw Torque</b>	<1.77 lb-in [0.2 N-m]
<b>Screwdriver Blade Width</b>	2.5 mm
<b>Wire Gauge (Single Wire)</b>	28-16 AWG
<b>Wire Gauge (Two Wires)</b>	28-16 AWG
<b>Wire Strip Length</b>	0.24 in [6mm]
<b>Equiv. Dinkle part #</b>	EC350V-05P-BK