

# BRYANT® IEC 60309 Pin and Sleeve Devices

## Overview

### Watertight Devices

Bryant IEC pin and sleeve devices are rugged nonconductive plugs, connectors, receptacles, and inlets designed to withstand heavy-duty industrial environments while maintaining a reliable electrical and watertight connection that resists accidental disconnection. Bryant's pin and sleeve line safeguards against connecting devices of different amperage and voltage ratings together. Conformance with IEC 60309-1 and IEC 60309-2 international standards results in standardized configurations that are easy to use.



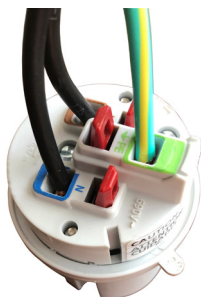
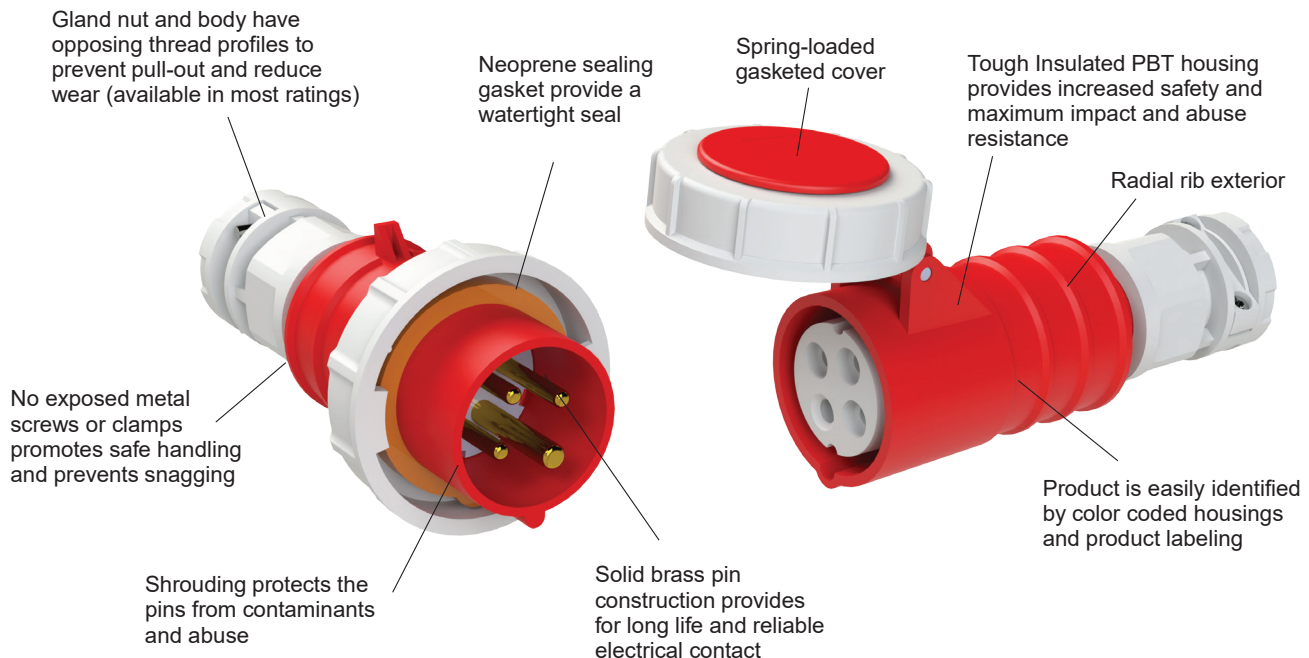
### Features:

- IP67 environmental ratings
- Impact and corrosion resistant insulated non-metallic housing
- Sequential contact engagement to prevent a momentary over-voltage
- External strain relief
- Glandless water ingress protection
- Color-coded for each specific voltage
- Self-adjusting contacts provide accurate pin insertion, producing self-cleaning effect as pin is inserted and withdrawn from sleeve
- Phase contacts are recessed in deep insulated chambers to minimize arcing
- Ground contact in forward position ensures first make, last break, neutral contact connects next, then phase contacts
- Terminal screws are backed out for easy assembly

### Agency Approvals:

- UL1686 Safety for Pin & Sleeve Configurations
- VDE, CE
- IEC 60309-1 and 60309-2
- \*UL Listed & cUL Listed File E146033 or E146032

*\*To obtain the most current agency approval information, see the Agency Compliance & Certifications Checklist section on the specific part number's web page.*



### 30 Amp Spring Clamp

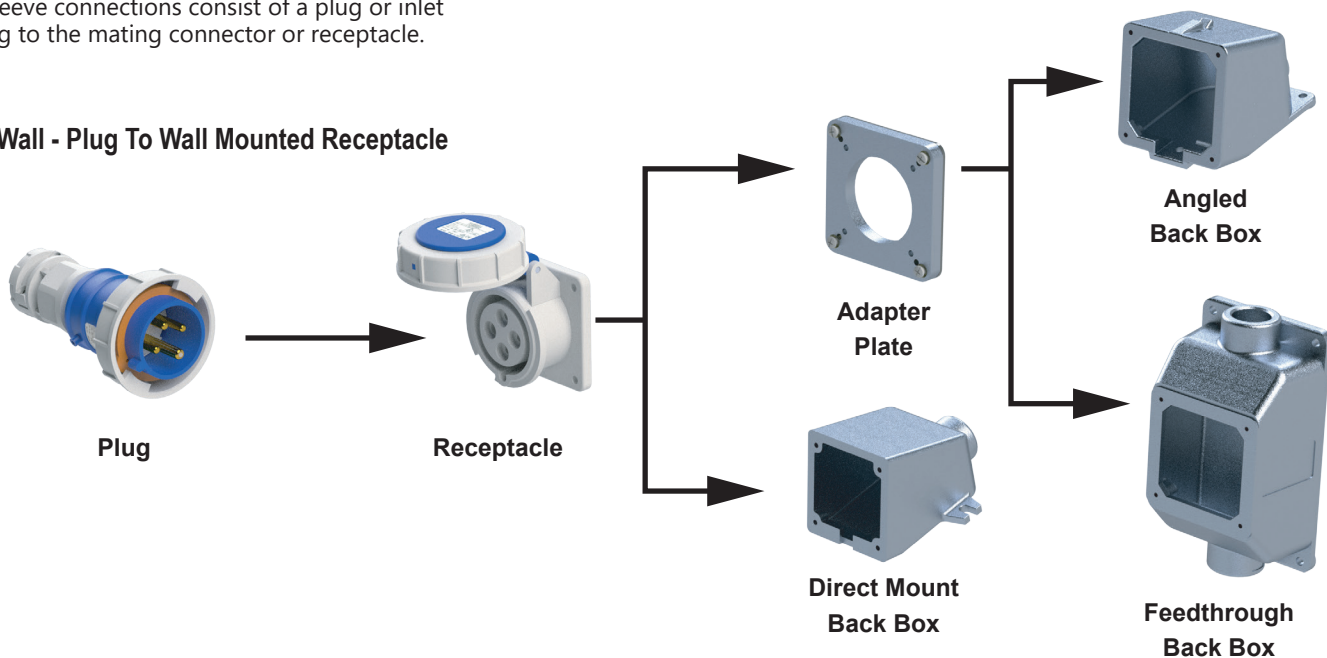
- Strong spring continuously applies pressures as strands relax
- Eliminates timely step of adding ferrules
- No torque screwdriver required
- UL approved screwless termination for 30 Amp Devices

# BRYANT® IEC 60309 Pin and Sleeve Devices

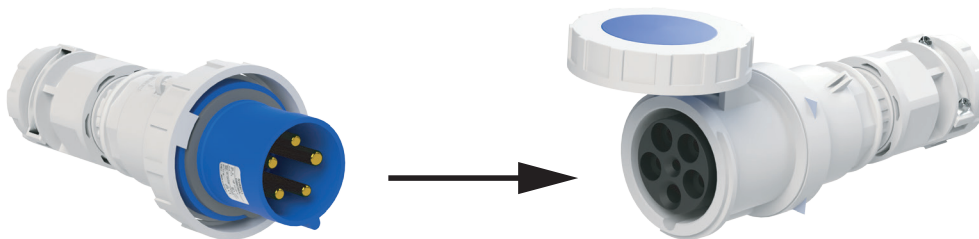
## Device Selection

Pin and Sleeve connections consist of a plug or inlet connecting to the mating connector or receptacle.

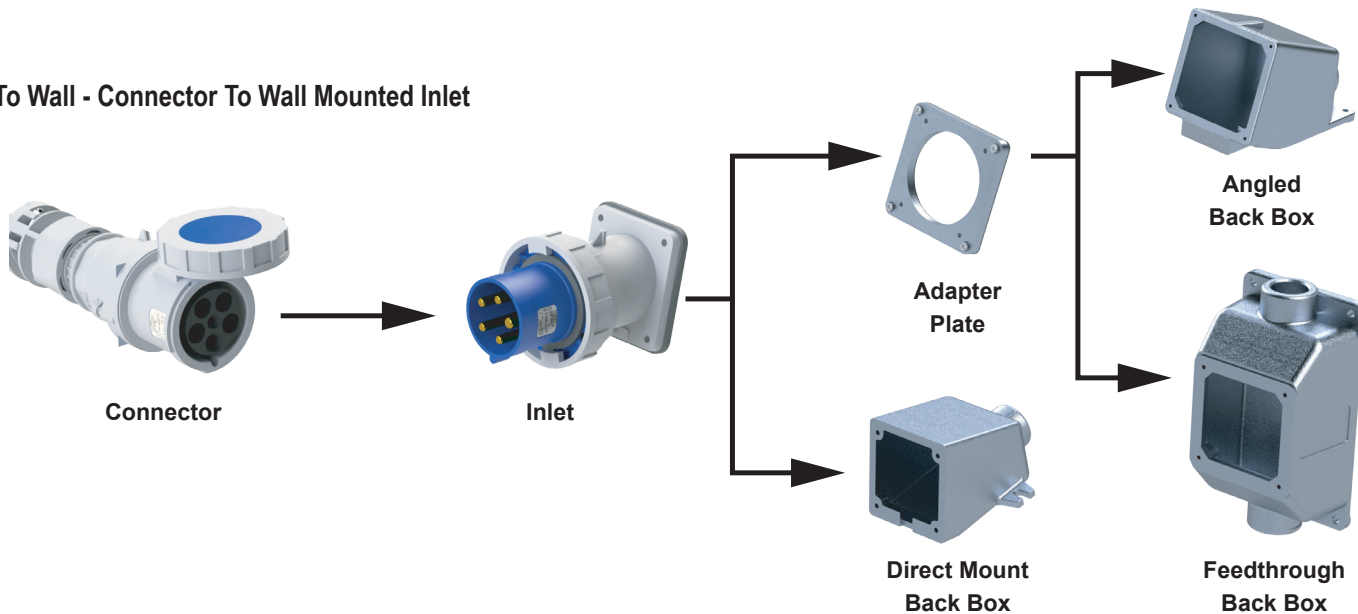
### Cord To Wall - Plug To Wall Mounted Receptacle



### Cord To Cord - Plug To Connector

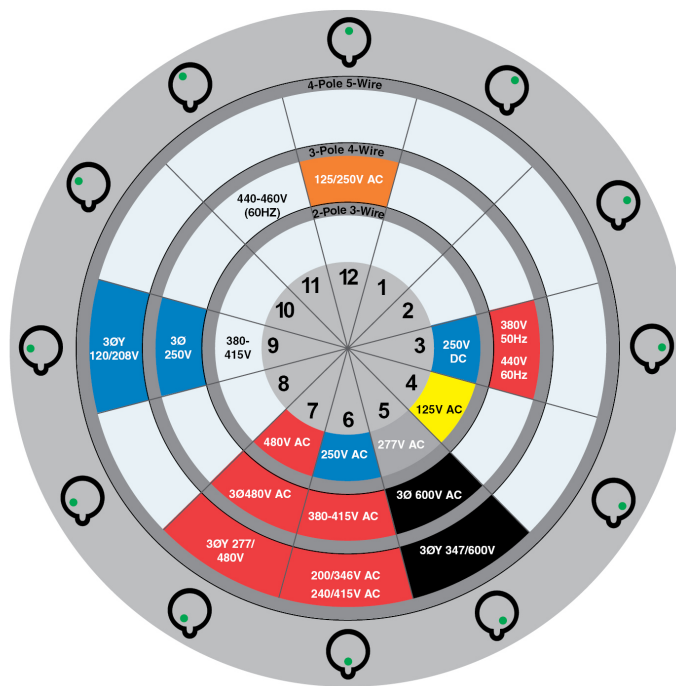


### Cord To Wall - Connector To Wall Mounted Inlet



# BRYANT® IEC 60309 Pin and Sleeve Devices

## Specifications



The housing keyway is always located at the 6 o'clock position on all female devices and is clearly visible to the user.

Female Grounding Sleeve  
Female Housing Keyway

IEC Pin & Sleeve device housings are color coded by voltage rating for easy identification.

Rated Voltage	Color
100V-130V	Yellow
125V/250V	Orange
200V-250V	Blue
277V	Grey
380V-480V	Red
500V and above	Black

The voltage rating can be identified by the clock position of the female grounding sleeve relative to the housing keyway. With the keyway always positioned at 6 o'clock, the female grounding sleeve is located at a specific clock position for each voltage rating.

Allowable Conductors							
Device	From			To			Grip
	AWG	Cond	Type	AWG	Cond	Type	Min/Max Diameter
20A	#14	3	SJOOW	#12	3	S	0.370 / 0.595
		4			4		0.410 / 0.650
		5			5		0.650 / 0.710
30A	#10	3	TC-ER	#8	3	TC-ER	0.565 / 0.930
		4			4		0.625 / 1.05
		5	S	#10	5	S	0.61 min
60A	#6	3	S	#4	3	SO	0.760 / 1.15
		4			4		0.970 / 1.450
		5			5		1.050 / 1.450
100A	#4	3	W	#1	3	W	1.180 / 1.450
		4			4		1.050 / 1.510
		5			5		0.905 / 1.680
							1.063 / 1.880

Device Rating					
	Domestic	20A	30A	60A	100A
Strip Cable Jacket	inch	2	2 1/2	3 1/2	4 1/2
	mm	51	70	89	114
Conductor Strip Length	inch	1	1/2	1	1 1/2
	mm	25	12	25	40
Torque Terminal Screws	lb•in	8	—	23	50
	N•m	0.9	—	2.5	5.7
Torque Clamp Screws	lb•in	10	17	15	15
	N•m	1.25	2.00	1.75	1.75
Torque External Cord Clamp	lb•in	61	84	177	194
	N•m	7	9.5	20	22

# BRYANT® IEC 60309 Pin and Sleeve Devices

## Materials and Specifications

Bryant IEC 60309 Pin and Sleeve Materials	
<i>Plug/Connectors</i>	
<b>Housing, gland nut and cord clamp accessory</b>	Toughened nylon
<b>Cord gland</b>	Neoprene
<b>Seals/gaskets</b>	Neoprene, EPDM, TPE
<b>Phase/ground pins</b>	Brass
<b>Terminal screws</b>	Plated steel
<b>Terminal cover</b>	Toughened nylon Glass-reinforced Nylon (100A)
<b>Contact carrier</b>	Glass-reinforced nylon Nylon (60A)
<b>Gland friction washer</b>	Plated carbon steel (30/60/100A) Nylon (20A)
<b>Assembly screws</b>	Stainless steel (60/100A) Plated steel (20/30A)
<i>Plug</i>	
<b>Locking ring</b>	Polycarbonate
<i>Connector</i>	
<b>Cover ring</b>	Polycarbonate
<b>Cover spring</b>	Stainless steel
<b>Hinge pins</b>	Brass
<b>Sleeve spring</b>	Nickel-plated spring steel
<i>Receptacle/Inlet</i>	
<b>Housing/mounting flange</b>	Toughened Nylon
<b>Mounting screws</b>	Stainless steel
<b>Seals/gaskets</b>	Neoprene, EPDM, TPE
<b>Phase/ground pins</b>	Brass
<b>Terminal screws</b>	Plated steel
<b>Terminal cover</b>	Toughened Nylon Glass-reinforced Nylon (100A)
<b>Contact carrier</b>	Glass-reinforced nylon Nylon (60A)
<i>Receptacle</i>	
<b>Cover arm</b>	Toughened nylon
<b>Cover ring</b>	Polycarbonate
<b>Sleeve spring</b>	Nickel-plated spring steel
<b>Hinge pins</b>	Brass
<i>Inlet</i>	
<b>Mounting flange</b>	Toughened nylon
<b>Locking ring</b>	Polycarbonate
<b>Assembly screws</b>	Stainless steel (60/100A) Plated steel (20/30A)

Bryant IEC 60309 Pin and Sleeve Specifications	
<i>Electrical</i>	
<b>Dielectric voltage withstand</b>	3,000 Volts - receptacle 2,200 Volts - plug and connector
<b>Max. working voltage</b>	600 VAC
<b>Spacings</b>	1/4 inch minimum creepage and clearance per UL 1682
<b>Current interrupting</b>	Certified for current interrupting at full rated current where applicable per UL 1682
<b>Temperature rise</b>	Less than 30°C temperature rise at full rated current after 50 cycles of overload tested at 150% of rated current at 0.75 pf.
<b>Endurance</b>	Up to 5,000 connect and disconnect cycles at full rated current and voltage per UL1682
<i>Mechanical</i>	
<b>Impact resistance</b>	After 6 hours at -25°C, 8 drops from 2 1/2" with 7 1/2" length cord
<b>Mechanical crush test</b>	250 lbs force for 1 minute after 6 hours at -25°C
<b>Terminal identification</b>	Terminals identified in accordance with North American Codes
<b>Product identification</b>	Catalog number and rating indicated on device
<i>Environmental</i>	
<b>Moisture resistance</b>	Submerged 30 minutes in water 1 meter in depth
<b>Flammability (enclosure)</b>	V2 minimum per UL94
<b>Operating temperatures</b>	Maximum continuous 95°C with impact Minimum continuous at -40°C without impact
<b>Ingress protection</b>	IP67 suitability
<b>Polarization integrity</b>	Mating devices will not energize ground if polarization feature is removed from housing and 40 lbs force is applied

# BRYANT® IEC 60309 Pin and Sleeve Devices

## 2-Pole, 3-Wire Devices 20, 30 and 60 Amp



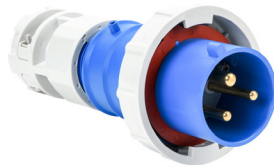
**BRY320P4W**



**BRY320R6W**



**BRY330C4W**



**BRY330P6W**



**BRY360C6W**

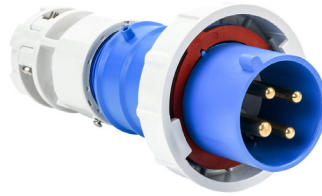
2-Pole, 3-Wire 20, 30 and 60 Amp													
Amps		Voltage		Color	Clock Position	Wire Size	Terminal Type	Cord Diameter (Inch)	Device	Reference Number	Part Number	Price	Drawing Link
UL	VDE	UL	VDE										
20	-	125 VAC	—	Yellow	4 hour	14-12 AWG	Screw	0.37 - 0.595	Plug	C320P4WA	<b><u>BRY320P4W</u></b>	\$74.00	<a href="#">PDF</a>
									Connector	C320C4WA	<b><u>BRY320C4W</u></b>	\$88.00	<a href="#">PDF</a>
									Receptacle	C320R4WA	<b><u>BRY320R4W</u></b>	\$82.00	<a href="#">PDF</a>
	16	250 VAC	200-250 VAC	Blue	6 hour	14-12 AWG	Screw	0.37 - 0.595	Plug	C320P6WA	<b><u>BRY320P6W</u></b>	\$74.00	<a href="#">PDF</a>
									Connector	C320C6WA	<b><u>BRY320C6W</u></b>	\$88.00	<a href="#">PDF</a>
									Receptacle	C320R6WA	<b><u>BRY320R6W</u></b>	\$82.00	<a href="#">PDF</a>
30	-	125 VAC	—	Yellow	4 hour	10-8 AWG	Spring	0.565 - 0.93	Plug	C330P4WA	<b><u>BRY330P4W</u></b>	Retired	<a href="#">PDF</a>
									Connector	C330C4WA	<b><u>BRY330C4W</u></b>	Retired	<a href="#">PDF</a>
									Receptacle	C330R4WA	<b><u>BRY330R4W</u></b>	\$114.00	<a href="#">PDF</a>
	32	250 VAC	200-250 VAC	Blue	6 hour	10-8 AWG	Spring	0.565 - 0.93	Plug	C330P6WA	<b><u>BRY330P6W</u></b>	\$112.00	<a href="#">PDF</a>
									Connector	C330C6WA	<b><u>BRY330C6W</u></b>	\$119.00	<a href="#">PDF</a>
									Receptacle	C330R6WA	<b><u>BRY330R6W</u></b>	\$114.00	<a href="#">PDF</a>
60	63	250 VAC	200-250 VAC	Blue	6 hour	6-4 AWG	Screw	0.97 - 1.45	Plug	C360P6WA	<b><u>BRY360P6W</u></b>	\$162.00	<a href="#">PDF</a>
									Connector	C360C6WA	<b><u>BRY360C6W</u></b>	\$197.00	<a href="#">PDF</a>
									Receptacle	C360R6WA	<b><u>BRY360R6W</u></b>	\$209.00	<a href="#">PDF</a>

# BRYANT® IEC 60309 Pin and Sleeve Devices

## 3-Pole, 4-Wire Devices 20 and 30 Amp



**BRY420P9W**



**BRY430P9W**



**BRY420C7W**



**BRY430C7W**



**BRY430R5W**

3-Pole, 4-Wire 20 and 30 Amp													
Amps		Voltage		Color	Clock Position	Wire Size	Terminal Type	Cord Diameter (Inch)	Device	Reference Number	Part Number	Price	Drawing Link
UL	VDE	UL	VDE										
20	16	3Ø 250 VAC	200-250 VAC	Blue	9 hour	14-12 AWG	Screw	0.41 - 0.65	Plug	C420P9WA	<b><u>BRY420P9W</u></b>	\$82.00	<a href="#">PDF</a>
									Connector	C420C9WA	<b><u>BRY420C9W</u></b>	\$95.00	<a href="#">PDF</a>
									Receptacle	C420R9WA	<b><u>BRY420R9W</u></b>	\$88.00	<a href="#">PDF</a>
	—	3Ø 480 VAC	—	Red	7 hour	14-12 AWG	Screw	0.41 - 0.65	Plug	C420P7WA	<b><u>BRY420P7W</u></b>	\$82.00	<a href="#">PDF</a>
									Connector	C420C7WA	<b><u>BRY420C7W</u></b>	\$95.00	<a href="#">PDF</a>
									Receptacle	C420R7WA	<b><u>BRY420R7W</u></b>	\$88.00	<a href="#">PDF</a>
30	32	3Ø 250 VAC	200-250 VAC	Blue	9 hour	10-8 AWG	Spring	0.625 - 1.05	Plug	C430P9WA	<b><u>BRY430P9W</u></b>	\$112.00	<a href="#">PDF</a>
									Connector	C430C9WA	<b><u>BRY430C9W</u></b>	\$139.00	<a href="#">PDF</a>
									Receptacle	C430R9WA	<b><u>BRY430R9W</u></b>	\$115.00	<a href="#">PDF</a>
	—	3Ø 480 VAC	—	Red	7 hour	10-8 AWG	Spring	0.625 - 1.05	Plug	C430P7WA	<b><u>BRY430P7W</u></b>	\$112.00	<a href="#">PDF</a>
									Connector	C430C7WA	<b><u>BRY430C7W</u></b>	\$139.00	<a href="#">PDF</a>
									Receptacle	C430R7WA	<b><u>BRY430R7W</u></b>	\$115.00	<a href="#">PDF</a>
	—	3Ø 600 VAC	—	Black	5 hour	10-8 AWG	Spring	0.625 - 1.05	Plug	C430P5WA	<b><u>BRY430P5W</u></b>	\$112.00	<a href="#">PDF</a>
									Connector	C430C5WA	<b><u>BRY430C5W</u></b>	\$139.00	<a href="#">PDF</a>
									Receptacle	C430R5WA	<b><u>BRY430R5W</u></b>	\$115.00	<a href="#">PDF</a>

# BRYANT® IEC 60309 Pin and Sleeve Devices

## 3-Pole, 4-Wire Devices 60 and 100 Amp



**BRY460P9W**



**BRY460C7W**



**BRY460R5W**



**BRY4100P9W**



**BRY4100C7W**



**BRY4100R5W**

3-Pole, 4-Wire 60 and 100 Amp													
Amps		Voltage		Color	Clock Position	Wire Size	Terminal Type	Cord Diameter (Inch)	Device	Reference Number	Part Number	Price	Drawing Link
UL	VDE	UL	VDE										
60	63	3Ø 250 VAC	200-250 VAC	Blue	9 hour	6-4 AWG	Screw	1.05 - 1.45	Plug	C460P9WA	<b><u>BRY460P9W</u></b>	\$220.00	<a href="#">PDF</a>
									Connector	C460C9WA	<b><u>BRY460C9W</u></b>	\$245.00	<a href="#">PDF</a>
									Receptacle	C460R9WA	<b><u>BRY460R9W</u></b>	\$255.00	<a href="#">PDF</a>
	—	3Ø 480 VAC	—	Red	7 hour	6-4 AWG	Screw	1.05 - 1.45	Plug	C460P7WA	<b><u>BRY460P7W</u></b>	\$220.00	<a href="#">PDF</a>
									Connector	C460C7WA	<b><u>BRY460C7W</u></b>	\$245.00	<a href="#">PDF</a>
									Receptacle	C460R7WA	<b><u>BRY460R7W</u></b>	\$255.00	<a href="#">PDF</a>
—	3Ø 600 VAC	—	Black	5 hour	6-4 AWG	Screw	1.05 - 1.45	Plug	C460P5WA	<b><u>BRY460P5W</u></b>	\$220.00	<a href="#">PDF</a>	
								Connector	C460C5WA	<b><u>BRY460C5W</u></b>	\$245.00	<a href="#">PDF</a>	
								Receptacle	C460R5WA	<b><u>BRY460R5W</u></b>	\$255.00	<a href="#">PDF</a>	
100	125	3Ø 250 VAC	200-250 VAC	Blue	9 hour	4-1 AWG	Screw	0.905 - 1.68	Plug	C4100P9WA	<b><u>BRY4100P9W</u></b>	\$329.00	<a href="#">PDF</a>
									Connector	C4100C9WA	<b><u>BRY4100C9W</u></b>	\$349.00	<a href="#">PDF</a>
									Receptacle	C4100R9WA	<b><u>BRY4100R9W</u></b>	\$312.00	<a href="#">PDF</a>
	—	3Ø 480 VAC	—	Red	7 hour	4-1 AWG	Screw	0.905 - 1.68	Plug	C4100P7WA	<b><u>BRY4100P7W</u></b>	\$329.00	<a href="#">PDF</a>
									Connector	C4100C7WA	<b><u>BRY4100C7W</u></b>	\$349.00	<a href="#">PDF</a>
									Receptacle	C4100R7WA	<b><u>BRY4100R7W</u></b>	\$312.00	<a href="#">PDF</a>
—	3Ø 600 VAC	—	Black	5 hour	4-1 AWG	Screw	0.905 - 1.68	Plug	C4100P5WA	<b><u>BRY4100P5W</u></b>	\$329.00	<a href="#">PDF</a>	
								Connector	C4100C5WA	<b><u>BRY4100C5W</u></b>	\$349.00	<a href="#">PDF</a>	
								Receptacle	C4100R5WA	<b><u>BRY4100R5W</u></b>	\$312.00	<a href="#">PDF</a>	

# BRYANT® IEC 60309 Pin and Sleeve Devices

## 4-Pole, 5-Wire Devices 30, 60 and 100 Amp



**BRY530P7W**



**BRY560C9W**



**BRY560R7W**



**BRY5100P9W**

4-Pole, 5-Wire 30, 60 and 100 Amp														
Amps		Voltage		Color	Clock Position	Wire Size	Terminal Type	Cord Diameter (Inch)	Device	Reference Number	Part Number	Price	Drawing Link	
UL	VDE	UL	VDE											
30	—	3ØY 277/480VAC	—	Red	7 hour	10-8 AWG	Spring	0.76 - 1.15	Plug	C530P7WA	<b><u>BRY530P7W</u></b>	\$130.00	<a href="#">PDF</a>	
									Connector	C530C7WA	<b><u>BRY530C7W</u></b>	\$139.00	<a href="#">PDF</a>	
									Receptacle	C530R7WA	<b><u>BRY530R7W</u></b>	\$135.00	<a href="#">PDF</a>	
60	63	3ØY 120/208 VAC	120/208- 144/250 VAC	Blue	9 hour	6-4 AWG	Screw	1.18 - 1.45	Plug	C560P9WA	<b><u>BRY560P9W</u></b>	\$232.00	<a href="#">PDF</a>	
									Connector	C560C9WA	<b><u>BRY560C9W</u></b>	\$255.00	<a href="#">PDF</a>	
									Receptacle	C560R9WA	<b><u>BRY560R9W</u></b>	\$269.00	<a href="#">PDF</a>	
	—	—	3ØY 277/480 VAC	—	Red	7 hour	6-4 AWG	Screw	1.18 - 1.45	Plug	C560P7WA	<b><u>BRY560P7W</u></b>	\$232.00	<a href="#">PDF</a>
										Connector	C560C7WA	<b><u>BRY560C7W</u></b>	\$255.00	<a href="#">PDF</a>
										Receptacle	C560R7WA	<b><u>BRY560R7W</u></b>	\$269.00	<a href="#">PDF</a>
100	125	3ØY 120/208 VAC	120/208- 144/250 VAC	Blue	9 hour	4-1 AWG	Screw	1.063 - 1.88	Plug	C5100P9WA	<b><u>BRY5100P9W</u></b>	\$372.00	<a href="#">PDF</a>	
									Connector	C5100C9WA	<b><u>BRY5100C9W</u></b>	\$395.00	<a href="#">PDF</a>	
									Receptacle	C5100R9WA	<b><u>BRY5100R9W</u></b>	\$359.00	<a href="#">PDF</a>	



# BRYANT® IEC 60309 Pin and Sleeve Accessories

## Features

- Back box features heavy duty cast aluminum construction with a durable enamel finish
- Adapter plates allow receptacles and inlets to be mounted to back boxes
- Cast aluminum direct mount back boxes permit receptacles to be mounted directly to box without adapter plate
- Closure caps provide a watertight seal for male plugs and flanged inlets when not mated

Nema Type 1 Portable Outlet Box Cover Plates Selection Chart						
For Use With	Hub Size (inches)	Back Boxes			Adapter Plates	Direct Mount Back Boxes
		For Mounting Receptacles and Inlets			Required to mount receptacles and inlets to back boxes	15° Angle
		15° Angle	Feed-through	Four-Way		
20 and 30A	3/4	<a href="#">BB201WA*</a>	<a href="#">FT202WA*</a>	—	<a href="#">AP2030</a>	<a href="#">DM20301</a>
	1	<a href="#">BB301WA**</a>	<a href="#">FT302WA*</a>	—		—
60A	1-1/4	<a href="#">BB601WA*</a>	—	—	<a href="#">AP60</a>	<a href="#">DM602</a>
	1-1/2	<a href="#">BB602WA*</a>	—	<a href="#">FW60100A**</a>		—
100A	1-1/2	<a href="#">BB1001WA*</a>	—	<a href="#">FW60100A**</a>	<a href="#">AP100</a>	—
	2	<a href="#">BB1002WA*</a>	—	—		—

NOTE: \*Adapter plates: 20/30A devices require [AP2030](#), 60A devices require [AP60](#) and 100A devices require [AP100](#) adapter plates, purchase separately.

\*\*Requires [AP60](#) adapter plate to mount 60A receptacle or inlet. Requires [AP100](#) adapter plate to mount 100A receptacle or inlet.



[BB201WA](#)



[BB601WA](#)



[BB1002WA](#)

Dead End Back Boxes			
Part Number	Price	Description	Drawing Link
<a href="#">BB201WA</a>	\$71.00	Bryant dead end back box, (1) 3/4in female NPT conduit entries, cast aluminum housing, gray. For use with Bryant 20A and 30A devices. Requires <a href="#">AP2030</a> adapter plate.	<a href="#">PDF</a>
<a href="#">BB301WA</a>	\$71.00	Bryant dead end back box, (1) 1in female NPT conduit entries, cast aluminum housing, gray. For use with Bryant 20A and 30A devices. Requires <a href="#">AP2030</a> adapter plate.	<a href="#">PDF</a>
<a href="#">BB601WA</a>	\$103.00	Bryant dead end back box, (1) 1-1/4in female NPT conduit entries, cast aluminum housing, gray. For use with Bryant 60A devices. Requires <a href="#">AP60</a> adapter plate.	<a href="#">PDF</a>
<a href="#">BB602WA</a>	\$103.00	Bryant dead end back box, (1) 1-1/2in female NPT conduit entries, cast aluminum housing, gray. For use with Bryant 60A devices. Requires <a href="#">AP60</a> adapter plate.	<a href="#">PDF</a>
<a href="#">BB1001WA</a>	\$152.00	Bryant dead end back box, (1) 1-1/2in female NPT conduit entries, cast aluminum housing, gray. For use with Bryant 100A devices. Requires <a href="#">AP100</a> adapter plate.	<a href="#">PDF</a>
<a href="#">BB1002WA</a>	\$189.00	Bryant dead end back box, (1) 2in female NPT conduit entries, cast aluminum housing, gray. For use with Bryant 100A devices. Requires <a href="#">AP100</a> adapter plate.	<a href="#">PDF</a>

# BRYANT® IEC 60309 Pin and Sleeve Accessories



**FT202WA**



**FT302WA**



**FW60100A**

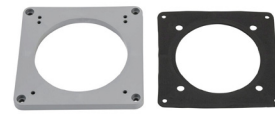
Back Boxes			
Part Number	Price	Description	Drawing Link
<b><u>FT202WA</u></b>	\$128.00	Bryant feed through back box, (2) 3/4in female NPT conduit entries, cast aluminum housing, gray. For use with Bryant 20A and 30A devices. Requires AP2030 adapter plate.	<a href="#">PDF</a>
<b><u>FT302WA</u></b>	\$128.00	Bryant feed through back box, (2) 1in female NPT conduit entries, cast aluminum housing, gray. For use with Bryant 20A and 30A devices. Requires AP2030 adapter plate.	<a href="#">PDF</a>
<b><u>FW60100A</u></b>	\$312.00	Bryant four-way back box, (1) 1-1/2in female NPT conduit entries, cast aluminum housing, gray. For use with Bryant 60A and 100A devices. Requires AP60 adapter plate for 60A devices or AP100 adapter plate for 100A devices.	<a href="#">PDF</a>



**AP2030**



**AP60**



**AP100**

Adapter Plates			
Part Number	Price	Description	Drawing Link
<b><u>AP2030</u></b>	\$16.00	Bryant adapter plate, nylon, gray. For use with Bryant back boxes using 20A and 30A devices.	<a href="#">PDF</a>
<b><u>AP60</u></b>	\$18.00	Bryant adapter plate, nylon, gray. For use with Bryant back boxes using 60A devices.	<a href="#">PDF</a>
<b><u>AP100</u></b>	\$19.00	Bryant adapter plate, nylon, gray. For use with Bryant back boxes using 100A devices.	<a href="#">PDF</a>

# BRYANT® IEC 60309 Pin and Sleeve Accessories



**DM20301**



**DM602**

Dead End Direct Mount Back Boxes			
Part Number	Price	Description	Drawing Link
<b>DM20301</b>	\$67.00	Bryant dead end direct mount back box, (1) 3/4in female NPT conduit entries, cast aluminum housing, gray. For use with Bryant 20A and 30A devices. Mounting hardware included.	<a href="#">PDF</a>
<b>DM602</b>	\$92.00	Bryant dead end direct mount back box, (1) 1-1/4in female NPT conduit entries, cast aluminum housing, gray. For use with Bryant 60A devices. AP60 adapter plate and mounting hardware included.	<a href="#">PDF</a>

Note: Direct Mount Boxes for use with receptacles only.

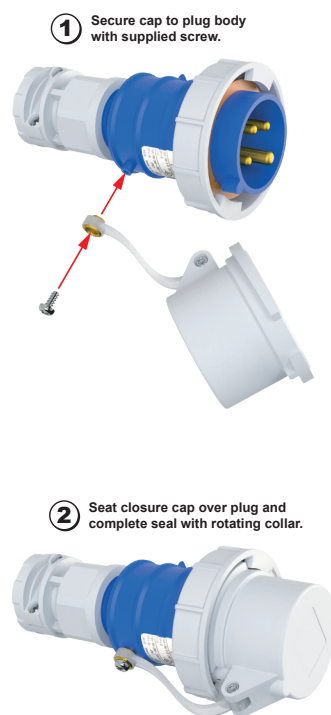
### Closure Cap used with Inlets



### Closure Cap used with Plugs



### Closure Cap Assembly



Closure Caps					
	For Use With	Part Number	Price	Description	Drawing Link
20A	3-Wire	<a href="#">CC320A</a>	\$34.00	Bryant closure cap, nylon, white. For use with Bryant 20A 3-wire devices.	<a href="#">PDF</a>
	4-Wire	<a href="#">CC420A</a>	\$37.00	Bryant closure cap, nylon, white. For use with Bryant 20A 4-wire devices.	<a href="#">PDF</a>
	5-Wire	<a href="#">CC520</a>	\$44.00	Bryant closure cap, nylon, white. For use with Bryant 20A 5-wire devices.	<a href="#">PDF</a>
30A	3-Wire/4-Wire	<a href="#">CC330</a>	\$39.00	Bryant closure cap, nylon, white. For use with Bryant 30A 3- and 4-wire devices.	<a href="#">PDF</a>
	5-Wire	<a href="#">CC530</a>	\$42.00	Bryant closure cap, nylon, white. For use with Bryant 30A 5-wire devices.	<a href="#">PDF</a>
60A	3-Wire/4-Wire/5-Wire	<a href="#">CC560</a>	\$48.00	Bryant closure cap, nylon, white. For use with Bryant 60A 3-, 4- and 5-wire devices.	<a href="#">PDF</a>
100A	3-Wire/4-Wire/5-Wire	<a href="#">CC510</a>	\$52.00	Bryant closure cap, nylon, white. For use with Bryant 100A 3-, 4-, and 5-wire devices.	<a href="#">PDF</a>